

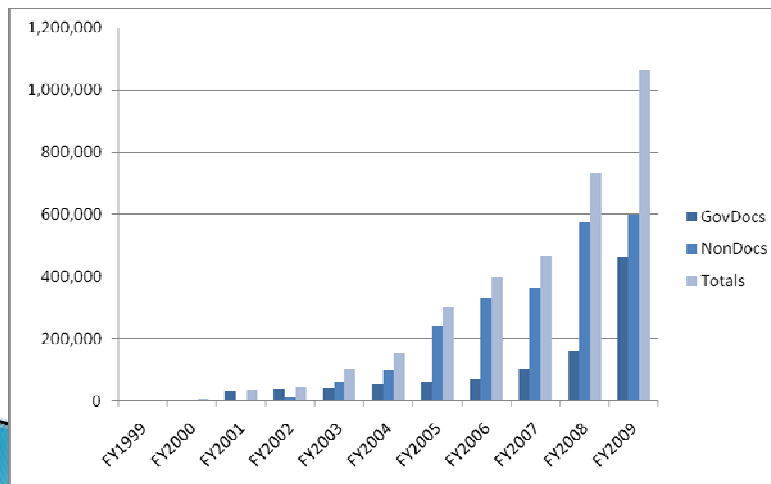
Tracking Online Document Usage from the Catalog: Experiences from the Field

Christopher C. Brown, University of Denver
cbrown@du.edu
Federal Depository Library Conference, Arlington, VA
October 19, 2009



URL growth in government documents at the University of Denver

URLs in the OPAC: Docs and non-docs



URL Addition Projects

Chronology of URL-adding projects at the University of Denver Penrose Library

Fiscal Year	Docs URL Totals	Special Projects
FY1999	1,848 docs URLs	Marcive subscription began; URLs in docs records
FY2000	5,549 docs URLs	
FY2001	32,800 docs URLs	Added thousands of records from GPO Access that GPO never added to their records ²⁵ Added over 4,000 URLs to LOC Thomas legislative histories Added 1,425 URLs to Economic Census records Added 456 links to online 7.5 minute topographic maps ²⁶
FY2002	36,326 docs URLs	
FY2003	43,307 docs URLs	
FY2004	55,508 docs URLs	Began tracking URL clickthroughs Added 207 URLs to U. of Md. Thurgood Marshall Law Library Civil Rights documents Added 115 URLs to Law Library Microform Consortium Online
FY2005	62,374 docs URLs	
FY2006	69,341 docs URLs	
FY2007	103,021 docs URLs	Added over 24,000 links to NASA technical reports ²⁷
FY2008	159,543 docs URLs	Added 40,690 URLs to LexisNexis digital hearings and committee prints Added 9,535 URLs to older GAO records Added additional 20,000 URLs to records for LexisNexis digital hearings and committee prints Added 248,134 MARC records for Readex digital Serial Set Added 12,902 OSTI MARC records Added 5,913 URLs for public laws via HeinOnline
FY2009	453,243 docs URLs	

The URL Prefix is Appended before the URL/PURL

```

n 530 Also available via Internet from the U.S. Census Bureau web site. Address as of 6/4/03: http://www.census.gov/prod/cen2000/phc-2-7.pdf; current access is available via PURL.
d 651 0 Colorado\Census, 2000.
d 651 0 Colorado\Population\Statistics.
d 650 0 Housing\CColorado\Statistics.
d 651 0 United States\Census, 22nd, 2000.
b 710 1 United States, Bureau of the Census.
y 856 4 1 http://library.du.edu/findit/peak/redirect.cfm?LinkURL=http://url.access.gpo.gov/GPO/LPS31684/z
m 935 Adobe Acrobat Reader required
tmp97316308
  
```

<http://library.du.edu/findit/peak/redirect.cfm?LinkURL=>

Stats are Logged, and User is Redirected to Desired URL

Date	Ipvs	IP	Website
09/04/09 11:17	gov	130.253.55.88	http://www.gpo.gov/ser/lets?url/083690-1x1jef/
09/04/09 11:38	gov	130.253.56.85	http://url.access.gpo.gov/GPO/LPS110807
09/04/09 11:38	gov	130.253.44.149	http://url.access.gpo.gov/GPO/LPS110807
09/04/09 11:38	gov	130.253.56.85	http://url.access.gpo.gov/GPO/LPS110807
09/04/09 11:39	gov	130.253.56.85	http://url.access.gpo.gov/GPO/LPS99198
09/04/09 11:43	gov	128.114.162.17	http://url.access.gpo.gov/GPO/LPS101547
09/04/09 15:04	gov	130.253.207.128	http://url.access.gpo.gov/GPO/LPS78510
09/04/09 15:04	gov	130.253.207.128	http://url.access.gpo.gov/GPO/LPS78510
09/04/09 15:08	mvc	71.229.134.230	http://www.nerc.com/
09/05/09 09:27	gov	120.253.109.23	http://ethos.nerc.com/
09/05/09 09:44	gov	120.253.106.20	http://www.lexisnexis.com/bianca.penib.du.edu/congcomp/
09/05/09 12:40	gov	71.194.128.132	http://url.access.gpo.gov/GPO/LPS12936
09/05/09 13:59	gov	71.194.128.132	http://url.access.gpo.gov/GPO/LPS12936
09/05/09 22:03	gov	24.8.18.160	http://bookstore.gpo.gov/subjects/ab-316.jsp
09/05/09 22:03	gov	24.8.18.160	http://bookstore.gpo.gov/subjects/ab-316.jsp
09/05/09 22:19	isp	24.9.19.160	http://www.map.edu/booka/030909956.html/
09/06/09 11:08	gov	75.211.65.92	http://url.access.gpo.gov/GPO/LPS94006
04/06/09 11:58	gov	75.211.65.92	http://myurl.com/23ajm6
09/06/09 12:00	gov	75.211.65.92	http://myurl.com/23ajm6
09/06/09 12:50	gov	75.211.65.92	http://url.access.gpo.gov/GPO/LPS94006
09/06/09 12:53	gov	75.211.65.92	http://url.access.gpo.gov/GPO/LPS101726
09/06/09 12:55	gov	75.211.65.92	http://url.access.gpo.gov/GPO/LPS101726
09/06/09 12:55	gov	75.211.65.92	http://nepris.epa.gov/Eve/ZvPURL.cgi?Dockey=200018BY.txt
09/06/09 12:56	gov	75.211.65.92	http://nepris.epa.gov/Eve/ZvPURL.cgi?Dockey=200018BY.txt
09/06/09 12:57	gov	75.211.65.92	http://nepris.epa.gov/Eve/ZvPURL.cgi?Dockey=200018BY.txt
09/06/09 12:57	gov	75.211.65.92	http://nepris.epa.gov/Eve/ZvPURL.cgi?Dockey=200018BY.txt
09/06/09 13:15	gov	75.211.65.92	http://url.access.gpo.gov/GPO/LPS101726
09/06/09 13:15	gov	75.211.65.92	http://url.access.gpo.gov/GPO/LPS94006
09/06/09 13:15	gov	75.211.65.92	http://url.access.gpo.gov/GPO/LPS94006
09/06/09 13:21	gov	67.161.159.113	http://url.access.gpo.gov/GPO/LPS6668
09/06/09 14:01	gov	75.211.65.92	http://url.access.gpo.gov/GPO/LPS101726
09/06/09 14:01	gov	75.211.65.92	http://url.access.gpo.gov/GPO/LPS101726
09/06/09 14:02	gov	75.211.65.92	http://url.access.gpo.gov/GPO/LPS101726
09/06/09 14:02	gov	75.211.65.92	http://url.access.gpo.gov/GPO/LPS101726
09/06/09 14:02	gov	75.211.65.92	http://url.access.gpo.gov/GPO/LPS101726
09/06/09 14:29	gov	75.211.65.92	http://nepris.epa.gov/Eve/ZvPURL.cgi?Dockey=200027AR.txt

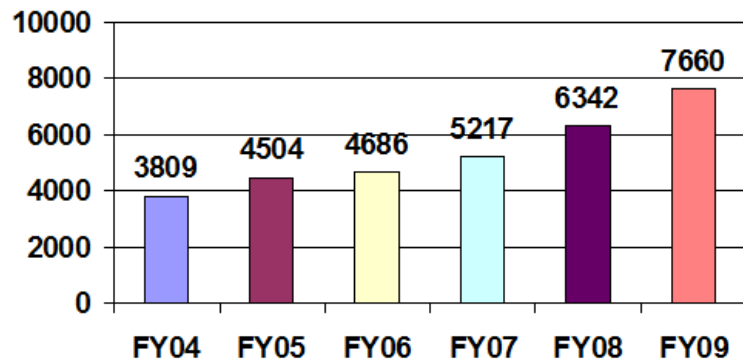
An Access Database is Used to Manage the Project Stats

The screenshot displays a search interface with three document entries:

- Document 1:** Date: 09/09/09 | 18:24, IP: 72.39.84.40, SubDocs No. ID: 36550, Title: "Evolution of Federal control of water powers. An argument before the National...", URL: http://url.access.gpo.gov/GPO/LPS101726, CIP Lookup: 1912.
- Document 2:** Date: 09/09/09 | 21:07, IP: 75.16.163.101, SubDocs No. ID: 36550, Title: "Mental health care for people living with or affected by HIV/AIDS: a practical guide...", URL: http://url.access.gpo.gov/GPO/LPS101726, CIP Lookup: 1999.
- Document 3:** Date: 09/09/09 | 21:12, IP: 68.745.38.224, SubDocs No. ID: 36550, Title: "The continuing review of the Federal role in economic revitalization. Hearing...", URL: http://url.access.gpo.gov/GPO/LPS101726, CIP Lookup: 1968.

Tracking Clickthroughs since 2003

Activity by FY



Clickthroughs in Relation to Number of Records

Fiscal Year	Total Docs Bib Recs	Bib Recs with URLs	Clickthroughs to Docs
FY2004	358,215	43,307	3,809
FY2005	373,200	55,508	4,504
FY2006	388,610	62,374	4,686
FY2007	401,454	103,021	5,217
FY2008	429,122	159,543	6,342
FY2009	711,315	463,121	7,660

Benefits of Clickthrough Project

1. We can provide meaningful stats to the library director
2. We can see high-use and low-use areas
3. We can tell if users benefit from our special projects
4. We can do reactive URL maintenance
5. We can see turnaways and other problems
6. We can see search engine attacks

1. Providing Meaningful Stats

FY2004-FY2010 Government URL Access Summary
7/17/2003 through 9/9/2009

	04	05	06	07	08	09	10	
Year	04	05	06	07	08	09	10	
A	04	05	06	07	08	09	10	
Totals	53	81	122	98	118	117	11	
A.001.001	13	22	32	19	23	23		Department of Agriculture (1902-)
A.012.001	8	3	2	12	23	24	3	Forest Service (1909-)
A.017.001	13	13	7	7	22	14	2	National Agricultural Library (1902-1976, 1981-)
A.023.001	1	1	1					Weather Bureau (1902-1948)
A.057.001	8	8	7	8	7	3		Natural Resources Conservation Service (1935-1942, 1948-)
A.067.001	2	8	1	3	9	7		Foreign Agriculture Service (1950-)
A.068.001	1							Rural Utilities Service (1964-)
A.077.001	3	3	2	1				Agricultural Research Service (1963-1973, 2001-)
A.077.501	1	1	1	2				Publications Relating to Horticulture (1953-)
A.077.701	1			1				Publications Relating to Home Economics and Human Nutrition (1953-)
A.082.001	1							Agricultural Stabilization and Conservation Service (1961-1968)
A.083.001	2	2	3	7	8	8	1	Agricultural Marketing Service (1972-)
A.082.001	1	8	24	3	4	1		National Agricultural Statistics Service (1906-)
A.083.001	13	7	21	22	20	18	3	Economic Research Service (1961-1976, 1981-)
C	04	05	06	07	08	09	10	
Totals	227	168	176	214	211	208	38	
C.001.001	12	28	22	8	17	8	3	Department of Commerce (1913-)
C.001.102					1			Minority Business Development Agency (1975-)
C.001.202	2	7	2		2			Technology Administration
C.002.001	140	80	108	109	103	116	44	Bureau of the Census (1902-1972, 1979-)
C.003.001	7	8	8	15	19	28	3	National Institute of Standards and Technology (1901-)
C.021.001	2	3	4	3	1	1		Patent and Trademark Office (1975-)
C.002.601	1							Bureau of Mines (1926-1954)
C.046.001					1			Economic Development Administration (1968-)
C.001.001				1				National Technical Information Service (1970-)
C.000.001	10	9	3	4	10	8		National Oceanic and Atmospheric Administration (1970-)
C.000.101	1	4	3	1				National Weather Service (1970-)
C.000.201	3	4	3	14	2			National Environmental Satellite, Data, and Information Service (1970-)
C.000.301	2	2	3	4	1			National Marine Fisheries Service (1970-)
C.000.401	2	1	1		20			National Ocean Service (1970-)
C.000.000	0	6	7	2	2	1		Bureau of Economic Analysis (1994-)

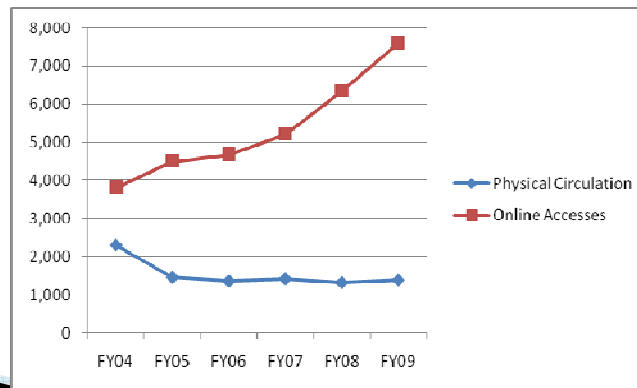
1. Providing Meaningful Stats

▶ Older Docs Content Gets Visits

	FY04	FY05	FY06	FY07	FY08	FY09
Total Clicks	3809	4504	4686	5217	6342	7660
Up to 10 years	3542	4155	4170	4369	4996	5600
<i>percent</i>	93.0%	92.3%	89.0%	83.7%	78.8%	73.1%
Over 10 years	267	349	516	848	1346	2060
<i>percent</i>	7.0%	7.7%	11.0%	16.3%	21.2%	26.9%

1. Providing Meaningful Stats

Comparison of Online Access with Physical Circulation of Documents



2. High-Use Areas by Agency

Agency	Count/OAID
Government Accountability Office (1921-)	3145
Federal Register Office (1985-)	1987
House Reports	1250
Bureau of the Census (1903-1972, 1975-)	984
Geological Survey (1878-)	885
Department of Energy (1977-)	878
Department of the Army (1949-)	874
Superintendent of Documents (1895-)	857
Committee on International Relations (House)	661
National Aeronautics and Space Administration (1958-)	658
Educational Research and Improvement Center (1986-)	653
Committee on Government Reform (House)	641
United States Institute of Peace (1984-)	553
Committee on the Judiciary (Senate)	525
Committee on Foreign Relations (Senate)	497
Senate Reports	476
Department of State (1789-)	432
Serial Set	387
National Security Council (1961-)	379
Department of Justice (1870-)	374
Office of Juvenile Justice and Delinquency Prevention (1974-)	372
Committee on Energy and Commerce (House)	369
Committee on the Judiciary (House)	356
Environmental Protection Agency (1970-)	327
Committee on Commerce, Science, and Transportation (Senate)	311
National Institute of Justice (1979-)	308
National Renewable Energy Laboratory	296
House Documents	276
Committee on Foreign Affairs (House)	258
Committee on Governmental Affairs (Senate)	257
National Defense University (1977-)	240

2. High-Use Areas by SuDocs

	A	B	C	D	E	F	G	H	I
1	Class	Total Of IIF	FY04	FY05	FY06	FY07	FY08	FY09	FY10
2	Y 4	6974	524	807	950	1110	1558	1674	351
3	GA	3111	308	465	445	498	633	652	110
4	Y 1	2635	408	394	243	316	485	674	115
5	D	1928	288	269	376	289	277	347	82
6	AE	1917	195	178	158	300	533	514	39
7	HE	1684	250	291	282	280	214	315	52
8	J	1454	333	261	204	145	226	246	39
9	C	1438	227	166	176	274	271	258	66
10	E	1330	37	83	95	93	129	671	222
11	I	1304	89	183	151	215	247	360	79
12	Y 3	1147	148	184	160	193	155	262	45
13	ED	994	177	180	140	149	158	161	29
14	GP	855	37	68	156	187	189	208	10
15	PREX	789	118	131	123	134	98	183	24
16	EP	671	46	49	100	156	177	112	31
17	NAS	627	27	41	48	109	178	182	42
18	A	623	63	81	132	89	118	117	23
19	S	543	68	113	84	104	106	55	13
20	L	334	35	47	81	55	46	77	13
21	LC	324	39	43	83	43	44	62	10
22	NA	236	62	75	68	31			
23	TD	229	30	38	24	21	42	55	19
24	Y z10	224	7	15	8	53	53	58	30
25	PR	223	21	36	30	45	35	49	7
26	GS	196	24	15	27	22	84	20	4
27	X	191	20	28	33	55	26	28	1

3. Special Project Usage

<i>Project</i>	<i>URL Count</i>	<i>Coverage Dates</i>	<i>Tracking Time Span</i>	<i>URL Clicks</i>	<i>Unique URL Clicks</i>	<i>% Unique Accessed</i>
Topographic Maps	456	1991 – 2001	Sept. 2003 – June 2009	101	76	16.6%
NASA Technical Reports	24,825	1976 – 2001	April 2007 – June 2009	310	263	1.06%
GAO Reports (older)	9,559	1976 – 1999	Aug. 2007 – June 2009	184	161	1.68%
LexisNexis Digital Hearings/Committee Prints	57,200	1850 – 1995	July 2007 – June 2009	1027	851	1.49%
Readex Digital Serial Set	248,134	1817 – 1948	Sept. 2008 – June 2009	239	205	0.08%
OSTI Reports	19,901	2002 – 2006	July 2008 – June 2009	476	375	1.88%

4. Reactive URL Maintenance

- ▶ Two approaches: Proactive approach
- ▶ My approach: Reactive approach – with nearly half-a-million docs URLs in our OPAC, we can't afford to be proactive.

Error rate

FY	Clicks	Errors	Rate
FY04	3809	202	5.30%
FY05	4504	231	5.13%
FY06	4686	299	6.38%
FY07	5217	217	4.16%
FY08	6342	179	2.82%
FY09	7660	177	2.31%
FY10	1542	38	2.46%

4. Reactive URL Maintenance

It is important to report broken PURLs to GPO. They are repaired very quickly.

93	090402-000062	http://purl.access.gpo.gov/GPO/LPS3177	Solved	04/02/2009 12:44 PM
94	090416-000000	http://purl.access.gpo.gov/GPO/LPS22962	Solved	04/16/2009 12:06 AM
95	090416-000140	Reference # 090131-000039	Solved	04/16/2009 06:52 PM
96	090430-000003	http://purl.gpo.gov/GPO/LPS232	Solved	04/30/2009 12:34 AM
97	090507-000000	http://purl.access.gpo.gov/GPO/LPS19306	Solved	05/07/2009 12:10 AM
98	090509-000039	http://purl.access.gpo.gov/GPO/LPS3609	Solved	05/09/2009 01:52 PM
99	090514-000148	http://purl.access.gpo.gov/GPO/LPS5663	Solved	05/14/2009 06:28 PM
100	090522-000053	http://purl.access.gpo.gov/GPO/LPS2889	Solved	05/22/2009 11:12 AM

5. Turnaway Problems The Dark Days of August/September

From August 24 through September 7, 2009 the PURL server was down. We were able to track each of the turnaways from government information and amend our records as needed.



Date	IP	Daily	URL
08/24/09 08:28	209.172.226.18	8/24/2009	http://purl.access.gpo.gov/GPO/LPS2878
08/24/09 08:37	209.172.226.18	8/24/2009	http://purl.access.gpo.gov/GPO/LPS43051
08/24/09 12:54	209.233.181.27	8/24/2009	http://purl.access.gpo.gov/GPO/LPS77521
08/24/09 13:32	71.196.232.123	8/24/2009	http://purl.access.gpo.gov/GPO/LPS78094
08/24/09 13:35	71.196.232.123	8/24/2009	http://purl.access.gpo.gov/GPO/LPS111603
08/24/09 18:53	130.253.181.202	8/24/2009	http://purl.access.gpo.gov/GPO/LPS80211
08/25/09 13:27	130.111.111.111	8/25/2009	http://purl.access.gpo.gov/GPO/LPS102289
08/25/09 14:40	70.255.111.111	8/25/2009	http://purl.access.gpo.gov/GPO/LPS44091
08/25/09 14:43	128.198.111.111	8/25/2009	http://purl.access.gpo.gov/GPO/LPS21844
08/25/09 17:07	170.94.111.111	8/25/2009	http://purl.access.gpo.gov/GPO/LPS11702
08/27/09 11:28	130.253.181.202	8/27/2009	http://purl.access.gpo.gov/GPO/LPS494
08/27/09 11:28	130.253.181.202	8/27/2009	http://purl.access.gpo.gov/GPO/LPS107702
08/27/09 11:49	130.253.181.202	8/27/2009	http://purl.access.gpo.gov/GPO/LPS78996
08/27/09 12:12	130.253.181.202	8/27/2009	http://purl.access.gpo.gov/GPO/LPS2878
08/27/09 12:31	130.253.181.202	8/27/2009	http://purl.access.gpo.gov/GPO/LPS100954
08/27/09 12:31	130.253.181.202	8/27/2009	http://purl.access.gpo.gov/GPO/LPS111257
08/28/09 11:30	130.253.181.202	8/28/2009	http://purl.access.gpo.gov/GPO/LPS2878
08/28/09 11:30	130.253.181.202	8/28/2009	http://purl.access.gpo.gov/GPO/LPS2878
08/28/09 11:37	130.253.181.202	8/28/2009	http://purl.access.gpo.gov/GPO/LPS109363
08/28/09 11:37	130.253.181.202	8/28/2009	http://purl.access.gpo.gov/GPO/LPS2878
08/28/09 11:52	130.253.181.202	8/28/2009	http://purl.access.gpo.gov/GPO/LPS90128
08/28/09 15:54	130.253.181.202	8/28/2009	http://purl.access.gpo.gov/GPO/LPS24140
08/30/09 17:11	97.116.111.111	8/30/2009	http://purl.access.gpo.gov/GPO/LPS106445
08/31/09 15:57	130.253.181.202	8/31/2009	http://purl.access.gpo.gov/GPO/LPS34027
08/31/09 16:00	130.253.181.202	8/31/2009	http://purl.access.gpo.gov/GPO/LPS112381
08/31/09 23:44	67.177.117.176	8/31/2009	http://purl.access.gpo.gov/GPO/LPS82611
09/01/09 13:34	130.253.181.202	9/1/2009	http://purl.access.gpo.gov/GPO/LPS86745

5. Turnaway Problems Stopgap: PURL Record Amended

- ▶ “Direct access to online version”

UNIVERSITY OF DENVER
PENROSE LIBRARY
PEAK: THE LIBRARY CATALOG

Start Over Recall Export MARC Display Another Search

Record # 63347015 View Entire Collection Search

Corp Author United States. Government Accountability Office.
Title Human capital [electronic resource] : retirements and anticipated new reactor applications will challenge NRC's workforce : report to the Subcommittee on Oversight of Government Management, the Federal Workforce, and the District of Columbia, Committee on Homeland Security and Governmental Affairs, U.S. Senate.
Pub Info [Washington, D.C.] : U.S. Government Accountability Office, [2007]

The links below are for electronic versions of this publication:
Access online: Direct access to online version
Access online version

Reaction to broken PURL
Non-working PURL

LOCATION	CALL #	STATUS
Internet	GA 1.13:GAO-07-105	ONLINE

Description iii, 69 p. : digital, PDF file.
Note Mode of access: Internet from GPO Access web site. Address as of 3/15/07: <http://webgate.access.gpo.gov/cgi-bin/getdoc.cgi?dbname=gao&doid-f:07105.pdf>; current access available via PURL.
Note(S) Title from title screen (viewed on Mar. 15, 2007).
"January 2007."
Paper version available from: U.S. Government Accountability Office, 441 G St., NW, Rm. LM, Washington, D.C. 20548.
Includes bibliographical references.

6. Search Engine Attacks

- ▶ CUIL (<http://www.cuil.com/>) CUIL attacked many OPACs – at least Millennium OPACs. We were attacked two times. Our project uncovered the attacks!
- ▶ August, 2007 and February, 2008
- ▶ The CUIL clickthroughs were subsequently omitted from the project stats

IP	Date	Class	SuDocs	Title
38.99.13.121	08/12/07 11:59	HE	HE 20.3046:16/2	Diagnosis and treatment of attention deficit hyperactivity disorder (ADH
38.99.13.121	08/12/07 14:32	ED	ED 1.326:	Digest of education statistics
38.99.13.121	08/12/07 15:44	Y 1	Y 1.1/2:SERIAL 146	The Constitution of the United States of America : analysis and interpre
38.99.13.121	08/12/07 15:49	C	C 3.186:P-60/	Health insurance coverage
38.99.13.121	08/12/07 17:00	C	C 55.310:	Marine fisheries review
38.99.13.121	08/12/07 17:27	Y 3	Y 3.2:C 17/IN 8/INT	Preparing for the 21st century [electronic resource] : an appraisal of U.
38.99.13.121	08/12/07 18:28	I	I 49.98/4:	National survey of fishing, hunting, and wildlife-associated recreation
38.99.13.121	08/12/07 18:49	TD	TD 10.8:H 33/3/	Emergency response guidebook : guidebook for hazardous materials i
38.99.13.121	08/12/07 18:49	L	L 2.3/4:	Occupational outlook handbook
38.99.13.121	08/12/07 19:41	X	X 1.1:	Congressional record : proceedings and debates of the ... Congress
38.99.13.121	08/12/07 19:57	C	C 3.186:P-23/190	65+ in the United States
38.99.13.121	08/12/07 19:59	C	C 3.186:P-23/	Computer use in the United States
38.99.13.121	08/12/07 19:59	JU	JU 10.2:B 22/3/998	Bankruptcy basics
38.99.13.121	08/12/07 20:02	AE	AE 2.106/3:	Code of federal regulations
38.99.13.121	08/12/07 20:41	NAS	NAS 1.21:4406	Orders of magnitude : a history of the NACA and NASA, 1915-1990
38.99.13.121	08/12/07 23:22	C	C 3.223/27:27	Population of the 100 largest cities and other urban places in the Unite
38.99.13.121	08/13/07 00:07	S	S 9.14:	Treaties in force : a list of treaties and other international acts of the U
38.99.13.121	08/13/07 00:31	Y 4	Y 4.P 93/1:1 P/	Congressional pictorial directory
38.99.13.121	08/13/07 02:44	PREX	PREX 1.2:T 67/	North American Free Trade Agreement between the government
38.99.13.121	08/13/07 02:44	C	C 3.186/14-2:	The Hispanic population in the United States
38.99.13.121	08/13/07 02:49	L	L 2.3/4-4:	Occupational outlook handbook and Career guide to industries on CD-
38.99.13.121	08/13/07 03:02	PREX	PREX 9.11:	Trade policy agenda and ... annual report of the President of the United
38.99.13.121	08/13/07 03:19	HE	HE 20.3615/3:	AIDS bibliography

Here's the ColdFusion Code We Used

```
MOD DATE: 8.11.03
MOD DESCRIPTION: changed cflocation to cfheader
MODIFIED BY: alex
--->
<cfif IsDefined('URL.LinkURL')>
<!-- set the cgi.QUERY_STRING variable to LinkURL --->
<cfset LinkURL="#cgi.QUERY_STRING#">
<!-- strip off 8 characters "http://" --->
<cfset weblink="#RemoveChars(LinkURL,1,8)#">
<!-- what is the cgi.REMOTE_ADDR AKA IP address --->
<cfset IP="#cgi.REMOTE_ADDR#">
<!-- add param to avoid errors --->
<cfparam default="" name="LinkURL">

<!-- drop stats into db --->
<cfquery datasource="#request.dsn#">
INSERT INTO Tbl_PeakLinks (LinkURL, UserIP)
VALUES ('#weblink#', '#IP#')
</cfquery>
<!-- send user to website --->
<cfheader name="refresh" value="0;URL=#weblink#">
<!-- stop page --->
<cfabort>
</cfif>
```

For More Information:

"Adding URLs in Bulk at the University of Denver." Presentation given at the Spring 2002 Depository Library Council Meeting, 24 April 2002, Mobile, AL. View PoierPoint presentation:

http://www.access.gpo.gov/su_docs/fdlp/pubs/proceedings/02spsc.html

"Statistics for Online Document Use." Presentation given at the Fall 2003 Depository Library Conference, 22 October 2003, Arlington, VA. Published in the [Proceedings of the 12th Annual Depository Library Conference](#), Oct. 19-22, 2003.

Brown, Christopher C. 2004. "Knowing Where They're Going: Statistics for Online Government Document Access through the OPAC". *Online Information Review* 28 (6), 396-409. DOI: [10.1108/14684520410570526](https://doi.org/10.1108/14684520410570526)

"Local Access Statistics for Federal Documents: Tracking Web Page and Online Catalog Usage." Presentation given with Susan Xue at the Fall 2004 Depository Library Conference, 20 October 2004, Washington, DC. Published in the [Proceedings of the 13th Annual Depository Library Conference](#), Oct. 17-20, 2004. [\[view\]](#)

"Enhancing NASA Fiche Records with Links to Online Content." Presentation given at the Fall 2007 Depository Library Conference, 17 October 2007, Arlington, VA. [\[view\]](#)

<http://sites.google.com/site/librariancorner/url-clickthrough-project>

Tracking Online Document Usage from the Catalog: Experiences from the Field

The San José State experience – Susan Kendall, SJSU



Oil painting by E. Standish, 1929
"Valley of Heart's Delight"
(San José)

Oil painting by E. Standish in 1929 captures the "Valley of Heart's Delight" when it most fully depicts the wide, flat valley widely reproduced as an inducement to settle in Santa

Traditional Ways of Tracking Print Materials

- Circulation Records



- In house shelving counts

KING LIBRARY CIRCULATION STATISTICS FOR THE MONTH OF <u>April</u> , 2009	
MATERIALS	IN-HOUSE
Faculty/Student	40

When developing the tracking program for e-govpubs, we wanted:

- Easy to use & understand
- The ability to sort by:
 - SuDocs Number
 - Alphabetic Title
 - Highest Number of Hits
- The ability to run reports by month and also by year

Currently, a monthly run is generated

Government Publications Statistics [Print Version](#)

Month: Sort By: Search: BibNum Title SuDocs

Year:

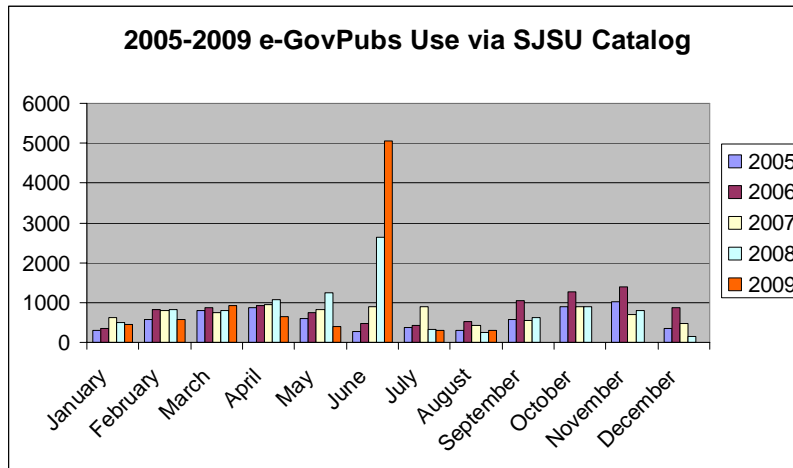
Selected Month(s): **September**
(CTL+SHIFT to select more than one month)

Today Date: **September 26, 2009**

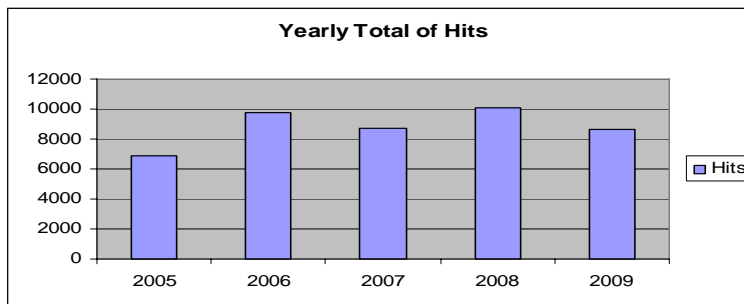
list 1 - 100 of 428 records [1](#) [2](#) [3](#) [4](#) [5](#) [>>](#)

	Bib. #	Title	SuDocs#	Count
1	3369252x	Federal workers' compensation	GA 1.13:GAO-08-284	16
2	34317041	Runaway, homeless, and missin	Y 4.ED 8/1:110-57	13
3	33056924	A review of PV inverter techn	E 9.18:NREL/SR-620-38771	6
4	25697498	Surface treatment of CuiGaSe	E 9.17:NREL/CP-520-32950	6
5	25539206	Explanations for the decline	J 32.10:C 43/12	5
6	35935248	Solar America initiative	E 10.2:SO 4/3	5
7	19085801	The history of Guantanamo Bay	D 201.2:2002010542	4

Monthly Statistics



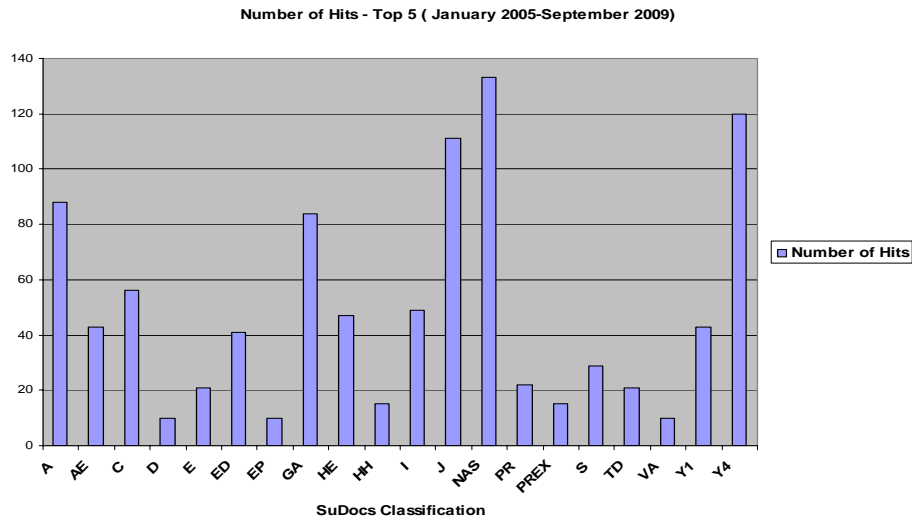
The yearly chart helped show the impact of e-govpubs



YEAR:	2005	2006	2007	2008	2009
Number of Hits:	6914	9750	8738	10107	8657

Note: 2009 includes January - August

What e-govpubs were most requested?



High Hits were indicative of

- Class assignments – Justice Studies & Social Work students have been increasing users of our egovpubs
- As to the NASA increased use – not only do we have an Aerospace Engineering program but our Science librarian pointed out that this year SJSU is actively participating in IYA and that NASA is a major supporter of IYA.

IYA?

NASA National Aeronautics and Space Administration

+ Visit NASA.gov
+ Contact NASA

HOME NEWS HOT TOPICS GO OBSERVE! CALENDAR AND EVENTS RESOURCES MISSION DISCOVERIES ABOUT NASA IYA

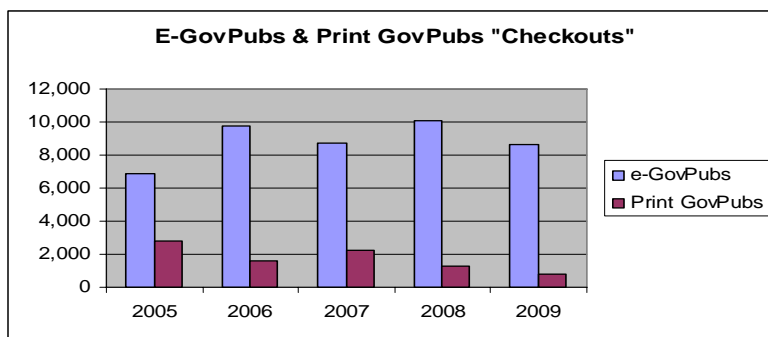
International Year of Astronomy 2009

Galileo Highlights ▶ 1 2 3 4

Galileo Teacher Training Program

The Galileo Teacher Training Program begins in the U.S. with workshops for classroom educators at the annual meeting of the Astronomical Society of the Pacific.
[Get more info »](#)

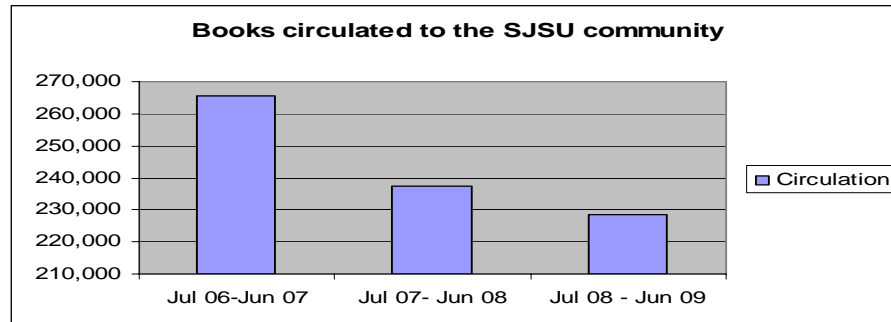
Do e-govpubs “circulate” more than print?



YEAR:	2005	2006	2007	2008	2009
E-govpubs	6,914	9,750	8,738	10,107	8,657
Print GovPubs	2,787	1,625	2,221	1,310	773

Note: 2009: January – August figures

Our general book circulation at SJSU is also decreasing



This is similar to reports on circulation usage statistics nationwide. See:
Anderson, Rick "Collection Development 2.0: Rethinking Library Collections in a Radically changed Information Environment."
ALA http://presentations.ala.org/index.php?title=Collection_Development_2.0

Benefits of the e-govpubs stats

- Training
 - Internal – focus professional development on most used areas
 - External – offer workshops for the community based on requested materials

Benefits of the e-govpubs stats

- Alert librarians to class assignments
- Opportunity for displays and other outreach activities
- Opportunity to review selection options

Benefits of the e-govpubs stats

- The online catalog is a great resource for finding electronic government publications
- Shows the ongoing need for multiple sources to find complex documents

References

For more detailed discussion on SJSU's usage statistics, please see:

Kendall, S. L. & Bakke, C. (2007) "Usage Statistics of Electronic Government Resources" *Serials Librarian*, 50 (3-4), 295-303.

Simultaneously printed in:

Fowler, D. C. (Ed.), *Usage Statistics of E-Serials* (pp. 161-172).
Binghamton, NY: Haworth Press

Circulation statistics:

Anderson, Rick "Collection Development 2.0: Rethinking Library Collections in a Radically changed Information Environment.

ALA

http://presentations.ala.org/index.php?title=Collection_Development_2.0

My thanks to:

The SJSU team

Celia Bakke - Lyna Nguyen

Shirley Hwang - April Gilbert

Steven Higaki &

Ashour Benjamin



Thank you!

Susan Kendall

Government Publications Coordinator, Collection
Development Coordinator, Liaison to the College
of Education

San José State University

Dr. Martin Luther King, Jr. Library

San José, CA

Email: susan.kendall@sjsu.edu

October 19, 2009

Tracking Online Document Usage from the Catalog



EXPERIENCES FROM AUBURN UNIVERSITY

Liza Weisbrod
Auburn University Libraries
Auburn, Alabama

Who We Are



Auburn University

- Land-grant university
- 25,000 students—20,000 undergraduates
- Science and technology



Selective Depository

- 2.6 million documents
- Depository since 1907



MARCIVE

- Using MARCIVE records since 1990
- Documents Without Shelves for three years

Why Track Links?

Is anyone using online documents?

If so, what kinds are they using?

Catalog Records vs. Databases



NASA TECHNICAL REPORTS
SERVER (NTRS)



**Why would anyone go through our catalog
to find documents?**



GAO
U.S. Government Accountability Office



Office of Scientific & Technical Information

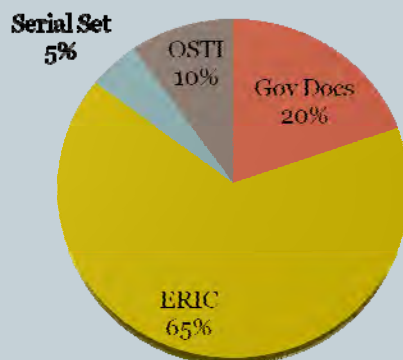
We added records for lots of documents (~600,000)

- ERIC documents
- Serial Set documents
- OSTI (Office of Scientific and Technical Information) technical reports

What gets Tracked?

- Government document records (94,046)
- ERIC records (313,622)
- OSTI records (47,420)
- Readex Serial Set records (23,114)

Document links in the catalog



Constructing Redirect Links

[http://www.lib.auburn.edu/AuCataloging/en/
countAndRedirect.jsf?url=
http://purl.access.gpo.gov/GPO/LPS110656
&bibId=3671740](http://www.lib.auburn.edu/AuCataloging/en/countAndRedirect.jsf?url=http://purl.access.gpo.gov/GPO/LPS110656&bibId=3671740)

Click Tracker Log

Recent Click Through Data

Data for recent URLs bounced through the [countAndRedirect.jsf](#) page. A subset of resources in the Auburn library catalog link through countAndRedirect so that the library can collect statistics on which online resources an end user accesses via the catalog.

[\[global view as CSV\]](#)

- Average period between clicks: 1735.3704 seconds
- Variance in period between clicks: 2.16008294E10 seconds squared

Service	Create Date	Title	CallNo	URL	BibId
www.eric.ed.gov	2009-10-05 00:35:06	Biography Today[electronic/microform]Profiles of People of Interest to Young Readers, 1997 /Laurie Lanzetta Harris, Ed. and Cherie D. Abbey, Ed.		http://www.eric.ed.g...	3607464
www.eric.ed.gov	2009-10-04 23:21:27	The Nation's Report Card: Arts 2008[electronic resource]:Music & Visual Arts: National Assessment of Educational Progress at Grade 6, NCEES 2009-499 /S. Keiper, B. A. Sandene and H. R. Rensky.		http://www.eric.ed.g...	3707413
www.arts.gov	2009-10-04 23:19:54	National Endowment for the Arts[electronic resource]:a history, 1965-2008 /edited by Mark Bauerlein with Ellen Grantham.	NF 2.2:EN 2	http://www.arts.gov/...	3690152
www.eric.ed.gov	2009-10-04 22:58:43	Why Write Like a College Graduate? [electronic/microform]. Mitchell Morse.		http://www.eric.ed.g...	3123226
frwebgate.access.gpo.gov	2009-10-04 22:24:01	H.R. 6078[electronic resource] the Green Resources for Energy Efficient Neighborhoods Act of 2008 :hearing before the Committee on Financial Services, U.S. House of Representatives, One Hundred Tenth Congress, second session, June 11, 2008.	Y 4 F 49/20:110-119	http://frwebgate.acc...	3260718

Excel Click Tracker Log

"http://www.ftc.gov/bcp/online/pubs/buspubs/epaclaims.pdf"	2009-09-22T	08:59:57.647-05:00	FT 1.33:EN 8	Environmental marketing claims[electronic resource].
"http://www.eric.ed.gov/contentdelivery/servlet/ERICServlet?accno=ED067225"	2009-09-22T	09:07:36.753-05:00		An Outline for Teaching Conservation in Elementary Schools[electronic/microform]
"http://www.fs.fed.us/pnw/pubs/gtr521.pdf"	2009-09-22T	11:23:49.732-05:00	A 13.88:PNW-GTR-521	Fuzzy logic knowledge bases in integrated landscape assessment : examples and possibilities /Keith M. Reynolds.
"http://www.eric.ed.gov/contentdelivery/servlet/ERICServlet?accno=ED490068"	2009-09-22T	14:54:55.401-05:00		APA Style and Research Report Writing[electronic resource] /Mohammad Ali. Salmami-Nodoushan and Seyyed Mohammad Alavi.
"http://hdl.handle.net/2060/19870007548"	2009-09-22T	15:39:17.475-05:00	NAS 1.26:4037	Prediction of vortex shedding from circular and noncircular bodies in subsonic flow[electronic/print] /Michael R. Mendenhall and Daniel J. Lesieur.
"http://docs.newsbank.com/select/serialset/100C4783C2A58D20.html"	2009-09-22T	15:42:35.604-05:00		Creek Indian broke, &c. Letter from the Secretary of War, transmitting the information, in part, required by a resolution of the House of Representatives, of 21st inst. in relation to the breaking an individual, and depriving him of his authority among the Creeks; also, in relation to the appointment of an Indian chief in the Territory of Michigan, during the year 1827. March 28, 1828. Read, and laid upon the table[electronic resource].
"http://www.eric.ed.gov/contentdelivery/servlet/ERICServlet?accno=ED502799"	2009-09-22T	16:50:54.008-05:00		No College Student Left Behind?[electronic resource] :Research & Occasional Paper Series: CSHE.9.2008 /Steven Brint.

Spiders, Bots, and 'Others'

Cuil, Google, Yahoo, IP addresses from non-US systems

permanent.access.gao.gov	2009-09-15 19:19:26	Arsenic in drinking water rule economic analysis[electronic resource]/developed by Abt Associates Inc.	EP 2.2:2004025433
www.gao.gov	2009-09-15 19:19:26	Army stryker brigades[electronic resource] assessment of extent to which operations should be documented for the mandated review of the evaluation plan.	GA 1.13:GAO-03-484
fwebgate.access.gao.gov	2009-09-15 19:19:26	Army reserve component cost, readiness, and restructuring agreement Congressional request General Accounting Office.	GA 1.13:NSIAD-95-78
fwebgate.access.gao.gov	2009-09-15 19:19:25	Army logistics[electronic resource] report on manpower and workload system inadequate and system interface untested.	GA 1.13:GAO-03-21
www.gao.gov	2009-09-15 19:19:25	Army management[electronic resource] need to reassess risk and resources for inspecting ceremonial rifles.	GA 1.13:GAO-01-967
fwebgate.access.gao.gov	2009-09-15 19:19:25	Army readiness[electronic resource] readiness improved for selected divisions, but manning imbalances persist.	GA 1.13:GAO-02-98
fwebgate.access.gao.gov	2009-09-15 19:19:25	Army logistics systems[electronic/microform] opportunities to improve the accuracy of the Army's major equipment item system : report to the Acting Secretary of the Army/United States General Accounting Office.	GA 1.13:AIMD-98-17
		Army inventory[electronic resource] parts	

594 clicks in a little over a minute

Results

- Average of 30-60 clicks per day
- ERIC documents (38%) and GAO reports (15%) are most used
- Technical reports (NASA and OSTI) account for 10-12% of clicks
- Congressional hearings (Y4) are used less than expected (<5%)

Click Tracker

(New Revised Version)

- Put a small patch on the javascript files the catalog accesses
- Searches for text in catalog web pages that matches:
Web Link: <link>
- Rewrites the link to route through the click counter

Benefits of New Click Tracker

Automatically rewrites links

- Less work for Systems
- Now tracking another 240,000 documents links

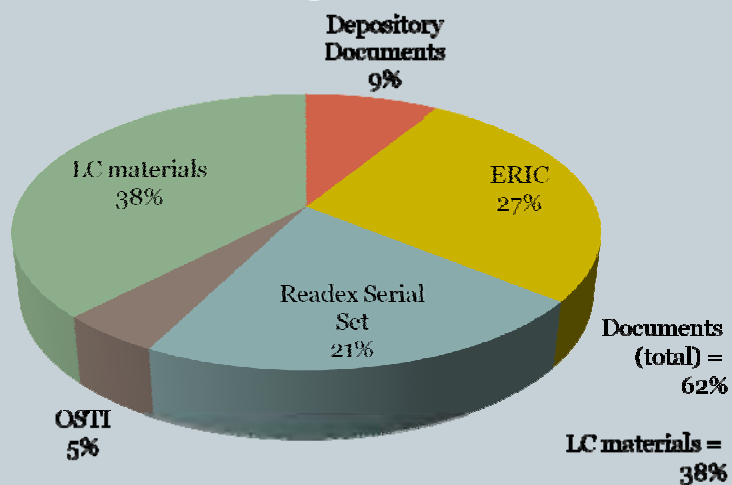
Cuts down on spiders and bots

- Most aren't smart enough to read javascript

Tracks everything

- Documents, e-books, journals, LC materials

What gets Tracked (new revised version)



Tracking Online Document Usage From the Catalog:

Experiences from BYU-Idaho



Print Materials CKO stats

09/29/09

List: Item Reporting

Page No. 1

Where collection = "GDF"

title	Coll	Call No./No. of CKO's (Usage)/In-house Us
Statistical abstract of the United States : the	GDF	C 3.134/7: 217
Marijuana situation assessment /	GDF	PREX 1.2:M 33 18
Working women count! : a report to the nation.	GDF	L 36.102:W 89/9 17 3
"I love my child but I need help..." : how to	GDF	HE23.1210:N93 17
Solving youth violence : partnerships that work :	GDF	J 28.24/3:Y 8 16 3
Portuguese : programmatic course /	GDF	S 1.114/2:P 16
Depression : what we know /	GDF	HE 20.8102:D 15
Insomnia, assessment and management in	GDF	HE 20.3202:IN 7 14 1
Special report : Schizophrenia, 1993 /	GDF	HE 13 13 1
Asthma awareness : curriculum for the	GDF	HE 20.3202:AS 11
Facts about cystic fibrosis.	GDF	HE 20.3202:C 99 11
Sex discrimination issues : sexual harassment,	GDF	Y 3.EQ 2:2 D 63/9 11 1
The NAFTA, expanding U.S. exports, jobs, and	GDF	PREX 1.2:N 10 2
Speaking out against drug legalization.	GDF	J 24.2:D 84/20 10 2
From Spanish to Portuguese /	GDF	S 1.114/2:P 10 1
History of Hill Air Force Base /	GDF	D 301.2:H 55 10
Portuguese : programmatic course /	GDF	S 1.114/2:P 10
Facts about sexual harassment.	GDF	Y 3.EQ 2:2 SE 9
Alcohol-induced brain damage /	GDF	HE 20.8315:22 9 1
Theories of discrimination /	GDF	Y 3.EQ 2:2 D 9

STATE of IDAHO

The environment: Apache on Linux with CGI



We pre-pend a redirect script written in PERL to those links we want to track. When a browser requests or clicks on those links the script writes the IP address of the requester, the URL requested, and a date time stamp to a weblog file on a Linux server. Two website examples below:

<http://adam.byui.edu/cgi-bin/redirect-log.pl?url=http://factfinder.census.gov/servlet/BasicFactsServlet>
<http://adam.byui.edu/cgi-bin/redirect-log.pl?url=http://www.fedstats.gov/>

STATE of IDAHO



MARCIVE® INC.

Documents Without Shelves provides libraries like yours an automatic way to receive MARC records containing the URL/PURL addresses of government documents on the web. You will receive hundreds of new records customized for your local system automatically every month.

All records have 856 fields which link to the actual document. We can customize the records according to your specifications.

856: 40 \$u <http://adam.byui.edu/cgi-bin/redirect-log.pl?url=http://purl.access.gpo.gov/GPO/LPS75136>
\$z CLICK HERE for online access

STATE of IDAHO

The Webalizer

What is it?

The **Webalizer** is a fast, free web server log file analysis program. It produces highly detailed, easily configurable usage reports in HTML format, for viewing with a standard web browser.

Features

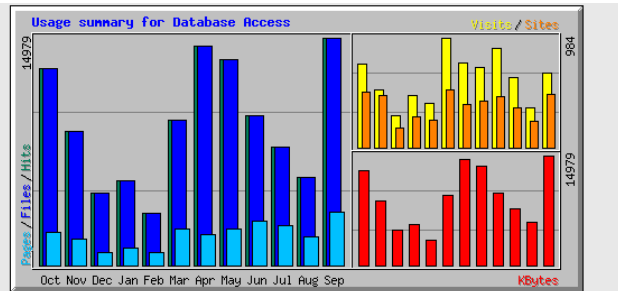
- Is written in C to be extremely fast and highly portable. On my 1.6Ghz laptop, it can process close to 70,000 records per second, which means a log file with roughly 2 million hits can be analyzed in about 30 seconds.
- Handles standard **Common** logfile format (CLF) server logs, several variations of the NCSA **Combined** logfile format, **wu-ftpd/proftpd xferlog** (FTP) format logs, **Squid** proxy server native format, and **W3C Extended** log formats. In addition, **gzip (.gz)** and **bzip2 (.bz2)** compressed logs may be used directly without the need for uncompressing.
- **Generated reports** can be configured from the command line, or more commonly, by the use of one or more **configuration files**. Detailed information on configuration options can be found in the **README** file, supplied with all distributions.
- Supports multiple languages. Currently, Albanian, Arabic, Catalan, Chinese (traditional and simplified), Croatian, Czech, Danish, Dutch, English, Estonian, Finnish, French, Galician, German, Greek, Hungarian, Icelandic, Indonesian, Italian, Japanese, Korean, Latvian, Lithuanian, Malay, Norwegian, Polish, Portuguese (Portugal and Brazil), Romanian, Russian, Serbian, Slovak, Slovene, Spanish, Swedish, Thai, Turkish and Ukrainian are available.
- Unlimited log file sizes and partial logs are supported, allowing logs to be rotated as often as needed, and eliminating the need to keep huge monthly files on the system.
- Fully supports IPv4 and IPv6 addresses. Includes built-in distributed DNS lookup capability and native Geolocation services.
- Distributed under the **GNU General Public License**, complete source code is available, as well as binary distributions for some of the more popular platforms. Please read the **Copyright notices** for additional information.

<http://www.mrunix.net/webalizer/>

STATE of IDAHO

<http://www.mrunix.net/webalizer/>

Generated by
Webalizer Version 2.01



[\[Daily Statistics\]](#) [\[Hourly Statistics\]](#) [\[URLs\]](#) [\[Entry\]](#) [\[Exit\]](#) [\[Sites\]](#) [\[Referrers\]](#) [\[Search\]](#) [\[Agents\]](#) [\[Countries\]](#)

Month	Daily Avg					Monthly Totals				
	Hits	Files	Pages	Visits	Sites	KBytes	Visits	Pages	Files	Hits
Sep 2009	516	516	119	22	473	14979	666	3471	14979	14979
Aug 2009	188	188	60	11	240	5829	338	1866	5829	5829
Jul 2009	250	250	84	20	359	7771	627	2615	7771	7771
Jun 2009	328	328	97	29	452	9854	890	2916	9854	9854
May 2009	437	437	76	23	418	13571	719	2368	13571	13571
Apr 2009	481	481	68	25	389	14459	759	2053	14459	14459
Mar 2009	354	354	88	36	515	9572	984	2389	9572	9572
Feb 2009	154	154	38	17	246	3401	394	836	3401	3401
Jan 2009	215	215	44	18	281	5606	468	1168	5606	5606

STATE of IDAHO

Sept 2009		Top 30 of 9473 Total URLs			
#	Hits	KBytes		URL	
1	14697	98.12%	14697	98.12%	* purl.access.gpo.gov*
2	263	1.76%	263	1.76%	http://worldcat.org
3	76	0.51%	76	0.51%	https://web.byui.edu/services/Login/
4	62	0.41%	62	0.41%	http://www.ancestry.com
5	60	0.40%	60	0.40%	http://webcapes.byuhtrsc.org
6	42	0.28%	42	0.28%	http://abish.byui.edu/library/bsg/SCIinternet.cfm
7	37	0.25%	37	0.25%	http://www.fedstats.gov/
8	36	0.24%	36	0.24%	http://hip.byui.edu
9	35	0.23%	35	0.23%	http://access.newspaperarchive.com
10	35	0.23%	35	0.23%	http://agricola.nal.usda.gov
11	33	0.22%	33	0.22%	http://www.forbes.com/
12	30	0.20%	30	0.20%	http://www.census.gov/compendia/statab/
13	28	0.19%	28	0.19%	http://pubmedcentral.nih.gov/
14	27	0.18%	27	0.18%	https://www.nascio.org/
15	26	0.17%	26	0.17%	http://www.abynnewslinks.com/
16	26	0.17%	26	0.17%	http://www.bls.gov/ocof/
17	24	0.16%	24	0.16%	https://www.lib.byui.edu/gartner/gartnerauth-byui.pl
18	23	0.15%	23	0.15%	http://library.lds.org/nxt/gateway.dll
19	21	0.14%	21	0.14%	http://lcweb2.loc.gov/frd/cs/cshome.html
20	21	0.14%	21	0.14%	http://www.al-islam.org
21	21	0.14%	21	0.14%	http://www.refworks.com/refworks
22	20	0.13%	20	0.13%	http://lists.webjunction.org/libweb/
23	20	0.13%	20	0.13%	http://www.albalearning.com/
24	20	0.13%	20	0.13%	http://www.gpoaccess.gov/coredocs.html
25	20	0.13%	20	0.13%	http://www.gpoaccess.gov/gmanual/
26	20	0.13%	20	0.13%	http://www.odci.gov/cia/publications/factbook/
27	20	0.13%	20	0.13%	http://www.radio-locator.com/
28	19	0.13%	19	0.13%	http://www.usa.gov/
29	18	0.12%	18	0.12%	http://atoz.ebsco.com/link.asp
30	18	0.12%	18	0.12%	http://www.byui.edu/timeclock

IDAHO

Sept 2009		Top 30 of 9473 Total URLs			
#	Hits	KBytes		URL	
1	14697	98.12%	14697	98.12%	* purl.access.gpo.gov*
2	263	1.76%	263	1.76%	http://worldcat.org
3	76	0.51%	76	0.51%	https://web.byui.edu/services/Login/
4	62	0.41%	62	0.41%	http://www.ancestry.com
5	60	0.40%	60	0.40%	http://webcapes.byuhtrsc.org
6	42	0.28%	42	0.28%	http://abish.byui.edu/library/bsg/SCIinternet.cfm
7	37	0.25%	37	0.25%	http://www.fedstats.gov/
8	36	0.24%	36	0.24%	http://hip.byui.edu
9	35	0.23%	35	0.23%	http://access.newspaperarchive.com
10	35	0.23%	35	0.23%	http://agricola.nal.usda.gov
11	33	0.22%	33	0.22%	http://www.forbes.com/
12	30	0.20%	30	0.20%	http://www.census.gov/compendia/statab/
13	28	0.19%	28	0.19%	http://pubmedcentral.nih.gov/
14	27	0.18%	27	0.18%	https://www.nascio.org/
15	26	0.17%	26	0.17%	http://www.abynnewslinks.com/
16	26	0.17%	26	0.17%	http://www.bls.gov/ocof/
17	24	0.16%	24	0.16%	https://www.lib.byui.edu/gartner/gartnerauth-byui.pl
18	23	0.15%	23	0.15%	http://library.lds.org/nxt/gateway.dll
19	21	0.14%	21	0.14%	http://lcweb2.loc.gov/frd/cs/cshome.html
20	21	0.14%	21	0.14%	http://www.al-islam.org
21	21	0.14%	21	0.14%	http://www.refworks.com/refworks
22	20	0.13%	20	0.13%	http://lists.webjunction.org/libweb/
23	20	0.13%	20	0.13%	http://www.albalearning.com/
24	20	0.13%	20	0.13%	http://www.gpoaccess.gov/coredocs.html
25	20	0.13%	20	0.13%	http://www.gpoaccess.gov/gmanual/
26	20	0.13%	20	0.13%	http://www.odci.gov/cia/publications/factbook/
27	20	0.13%	20	0.13%	http://www.radio-locator.com/
28	19	0.13%	19	0.13%	http://www.usa.gov/
29	18	0.12%	18	0.12%	http://atoz.ebsco.com/link.asp
30	18	0.12%	18	0.12%	http://www.byui.edu/timeclock

11 of the Top 30 URL's are Gov Website s or Docs

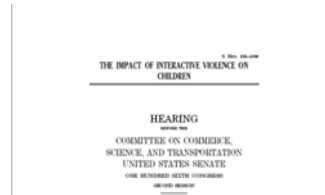
IDAHO

Links receiving 8 hits

- 8 0.06% <http://purl.access.gpo.gov/GPO/LPS15040>
- 8 0.06% <http://purl.access.gpo.gov/GPO/LPS31457>
- 8 0.06% <http://purl.access.gpo.gov/GPO/LPS40373>
- 8 0.06% <http://purl.access.gpo.gov/GPO/LPS4790>



Gulf News Archive



U.S. Senate Hearing



GPO Bookstore



LOC study guide

STATE of IDAHO

Of 445 links receiving 2 hits 431 were Gov Docs or Websites

- 2 0.01% <http://purl.access.gpo.gov/GPO/LPS6646> Public Law 106-264 Aug:19, 2000
- 2 0.01% <http://purl.access.gpo.gov/GPO/LPS6664> House Report 106-815
- 2 0.01% <http://purl.access.gpo.gov/GPO/LPS6688> Congressional Hearing on terrorism
- 2 0.01% <http://purl.access.gpo.gov/GPO/LPS6689> Congressional Hearing on terrorism
- 2 0.01% <http://purl.access.gpo.gov/GPO/LPS6727> FAA Advisory Circular
- 2 0.01% <http://purl.access.gpo.gov/GPO/LPS6738> GAO Report on terrorism
- 2 0.01% <http://purl.access.gpo.gov/GPO/LPS6807> House Report 106-826
- 2 0.01% <http://purl.access.gpo.gov/GPO/LPS6833> House Report 106-992
- 2 0.01% <http://purl.access.gpo.gov/GPO/LPS69206> INSCOM Journal Winter 2006
- 2 0.01% <http://purl.access.gpo.gov/GPO/LPS6935> Senate Report 106-493
- 2 0.01% <http://purl.access.gpo.gov/GPO/LPS7051> Congressional Hearing on telecommunication
- 2 0.01% <http://purl.access.gpo.gov/GPO/LPS7070> Dept of Health and Human Services doc
- 2 0.01% <http://purl.access.gpo.gov/GPO/LPS71275> Social Security Administration doc
- 2 0.01% <http://purl.access.gpo.gov/GPO/LPS71882> Federal Trade Commission doc
- 2 0.01% <http://purl.access.gpo.gov/GPO/LPS73710> Grants.gov grant application
- 2 0.01% <http://purl.access.gpo.gov/GPO/LPS7375> House Report 106-847
- 2 0.01% <http://purl.access.gpo.gov/GPO/LPS7573> House Report 106-964

STATE of IDAHO

Of 8029 1 hit links 7510 were Gov Docs from our catalog using a purl access URL
464 were Government Website links from our catalog or website while 55 were other non licensed sources

STATE of IDAHO

Rough Estimate of Top 10



STATE of IDAHO



Tracking Usage of Online Documents Accessed Through LSU's OPAC

A Service Offered by the LOUIS Consortium to
Louisiana Academic Depositories

*A presentation for Fall 2009 DLC
by Stephanie Braunstein, MA MLIS
Head Government Documents/Microforms Librarian
Louisiana State University, Baton Rouge*



WHERE IT ALL HAPPENS:



LOUIS: The Louisiana Library Network combines the resources of Louisiana's public and private academic libraries, along with a centralized support staff located on the LSU campus, to produce a dynamic library consortium. The central support staff, commonly referred to as "LOUIS," provides many services to consortium members such as library automation, a union catalog, a digital library, electronic resources, authentication, training, consulting, and hosting related listservs and websites. Established in 1992 by the Board of Regents, LOUIS has 47 members and receives approximately \$3.5 million annually in contracts and membership fees to support consortium members.



Initiating the Request for This Service

- Early 2002, Lori Smith of Southeastern Louisiana University asked if the LOUIS Libraries using Sirsi could have a mechanism for monitoring URL usage—specifically for federal and state documents.
 - The LOUIS Consortium had recently adopted SirsiDynix's Unicorn for its OPAC (beginning in November 2001—4 phases to bring on 28 academic libraries)
 - *Time passed with no clear answer to the issue.*
 - By end of 2007, Cathy Sicard, of LOUIS, determined that Sirsi would not be implementing this mechanism.
 - More discussion ensued; more time passed. . . .



Discussion as to why LA Docs Libraries wanted a mechanism other than GPO's PURL Referrals Reports:

- http://www.access.gpo.gov/su_docs/fdlp/coll-dev/referrals/

"Many Federal depository libraries have Web sites and online catalogs that contain links to the PURLs available on *GPO Access*. Each time a user clicks on one of these links the handoff from the depository Web site to GPO is recorded in our Web server log files as a referral. A number of depositories have expressed interest in knowing how many referrals to *GPO Access* come from their sites. For this reason, a report of these referrals is compiled monthly using the Web addresses Federal depository libraries have registered. Please note that although domains were commonly registered as belonging to a library, many are shared by the institution at large. This is why the referrals are listed by institution, rather than by library. Similarly, if you share an OPAC with a consortium, the referrals are attributed to the consortium, as it is impossible to tell which referrals came from individual members."



Additional Concerns

- **Federal Depository Library PURL Referral Report Fiscal Year 2009**
- [Cumulative \(.xls\)](#) (February - July 09 not added yet)
- [October 08](#)
- [November 08](#)
- [December 08](#)
- [January 09](#)
- [February 09](#)
- [March 09](#)
- [April 09](#)
- [May 09](#)
- [June 09](#)
- [July 09](#)
- August 09 - Not available due to technical problems.



1	Dwp NUM.	institution	8-Oct	Nov-08	8-Dec	Jan-09	Totals
2	0612A	Abilene Christian University	45	49	14	13	121
3	0016	Alaska Department of Education and Early Development	4	2	1	5	12
4	0-21B	Albany Law School	0	1	0	0	1
5	0279B	Albion College	22	26	6	2	56
6	0308A	Alcorn State University	2	0	1	0	3
7	0245A	Allegheny College of Maryland	4	7	0	0	11
8	0528B	Allegheny County Law Library	0	0	0	0	0
9	0177	Allen County Public Library	20	30	18	21	89
10	0623	Altoona Area Public Library	0	0	0	0	0
11	0196A	American University	41	39	25	486	591
12	0260	Amherst College	0	0	0	0	0
13	0616A	Angelo State University	3	2	0	0	5
14	0022	Arizona State Library Archives and Public Records	0	0	0	0	0
15	0025	Arizona State University	584	497	292	178	1551
16	0027	Arizona Western College	0	0	1	3	4
17	0036B	Arkansas State Library	3	6	1	6	16
18	0033	Arkansas State University	37	40	16	16	117
19	0032	Arkansas Tech University	34	72	21	5	132
20	0219	Ashland Community & Technical College	2	1	0	1	4
21	0-86	Ashland University	68	50	9	2	129
22	0122A	Atlanta University Center	20	22	9	8	59
23	0002	Auburn University	346	337	128	232	1043
24	0573A	Augustana College	0	0	0	1	1
25	0069B	Aurora Library Online Catalog	35	35	9	7	86
26	0-27	Avins Library/Hofstra University	98	158	95	64	415
27	0002	Baker University	0	0	0	15	15
28	0180	Ball State University	71	67	40	38	216
29	0029	Bates College	94	87	43	42	266
30	0006	Baylor University	194	211	58	58	521
31	0066	Beloit College	0	0	0	0	0
32	0080	Benton Harbor Public Library	0	0	0	0	0



Difficult to Follow and Sometimes Inaccurate Reports

Pulled from Cumulative Report Covering Oct. 08-Jan. 09:
http://www.access.gpo.gov/su_docs/fdlp/coll-dev/referrals/index.html

- 0598 Longview Public Library
 - 0194A Loras College
 - 0057A Los Angeles County Law Library
 - 0057 Los Angeles Public Library

 - **0222 Louisiana State University** **60**

 - 0229A Louisiana State University - Shreveport
 - 0232A Louisiana State University at Eunice
 - **0231 Louisiana State University, Baton Rouge**
 - 0221 Louisiana Supreme Court
 - 0230 Louisiana Tech University
 - **0060C Loyola Law School INCORRECT DEPOSITORY NUMBER—NO. IS 0221-A, NOT 0060C**
-



Listing Taken from October 2008 Depository Library PURL Referral Report

http://www.access.gpo.gov/su_docs/fdlp/coll-dev/referrals/1008-fdlreferrals.html

- **Southern University at New Orleans 1032**
 - lsu.louislibraries.org 312
 - sltu.louislibraries.org 222
 - ull.louislibraries.org 114
 - ulm.louislibraries.org 103
 - nsula.louislibraries.org 70
 - nicholls.louislibraries.org 65
 - uno.louislibraries.org 63
 - lsus.louislibraries.org 38
 - subr.louislibraries.org 26
 - suno.louislibraries.org 10
 - lsue.louislibraries.org 9

TOTAL = 1032



LSU'S URL Hit List 2008

2008 March	426
2008 April	672
2008 May	223
2008 June	104
2008 July	198
2008 August	129
2008 September	385
2008 October	480
2008 November	972
2008 December	191
total	3780



Using Sirsi not an option—so

- Cathy did, however, propose a solution:
 - “. . . the option of adding the CGI script and prepending a url (which we can get Marcive to do) to the front of all Marcive records which will call the script and log an entry to a file for each site. The file will contain the url that was clicked and a date/time stamp. We will put the file in their Xfer directory on a monthly basis and they can download it. ”
 - This is the script: <http://utils.louislibraries.org/cgi-bin/lz0050.pl?>
 - And the rest, as they say, is history. . . .
-



Following is the list of LOUIS campuses who get the govdocs records loaded and also get the 856 govdocs usage stats:

- LATECH—Louisiana Technical, Ruston, LA (Regional for Northern Louisiana)
LSU—Louisiana State University (Regional for Southern Louisiana)
LSUE—Louisiana State University, Eunice, LA (16% selective)
LSULAW—Louisiana State University, Law Center, Baton Rouge, LA (13% selective)
LSUS—Louisiana State University, Shreveport, LA (40.5% selective)
McNeese—McNeese University, Lake Charles, LA (66% selective)
Nicholls—Nicholls University, Thibodaux, LA (77% selective)
NSULA—Northwestern State University of Louisiana, Natchitoches, LA (36% selective)
SLU—Southeastern Louisiana University, Hammond, LA (42% selective)
SUBR—Southern University, Baton Rouge, LA (22% selective)
SULAW—Southern University Law, Baton Rouge, LA (12.5% selective)
SUNO—Southern University, New Orleans, A (30% selective)
ULL—University of Louisiana, Lafayette, LA (40% selective)
ULM—University of Louisiana, Monroe, LA (52% selective)
UNO—University of New Orleans (91% selective)



An Example of Raw Data as It Appears in the Log

- 20090801101427170.177.57.85http://purl.access.gpo.gov/GPO/LPS9495820090801190807/68.11.187.137http://purl.access.gpo.gov/GPO/LPS11333020090802173937/130.39.159.234http://purl.access.gpo.gov/GPO/LPS5147820090803095602/130.39.171.149http://purl.access.gpo.gov/GPO/LPS4840120090803102500/130.39.0.207http://purl.access.gpo.gov/GPO/LPS4419320090803111656/130.39.159.234http://purl.access.gpo.gov/GPO/LPS5147820090803130243/130.39.0.208http://purl.access.gpo.gov/GPO/LPS5807220090803130958/130.39.255.23http://purl.access.gpo.gov/GPO/LPS471720090804123345/130.39.60.184http://www.lib.lsu.edu/special/inp/tpalexandria.html2009080417260170.164.23.242http://purl.access.gpo.gov/GPO/LPS39032009080417275170.164.23.242http://purl.access.gpo.gov/GPO/LPS790512009080417281270.164.23.242http://purl.access.gpo.gov/GPO/LPS7995120090805134003/130.39.0.207http://purl.access.gpo.gov/GPO/LPS11015120090805150826/68.226.234.96http://purl.access.gpo.gov/GPO/LPS10754620090805151007/68.226.234.96http://www.ndu.edu/ctnsp/defense%5FHorizons/DH57.pdf20090805164340/130.39.63.4http://water.usgs.gov/nawqa/protocols/OFR-93-409/aig1.html20090805171144/130.39.63.4http://purl.access.gpo.gov/GPO/LPS9927120090806083603/70.180.32.160http://purl.access.gpo.gov/GPO/LPS987002009080609004/130.39.63.164http://purl.access.gpo.gov/GPO/LPS110011200908060914011/30.39.63.164http://purl.access.gpo.gov/GPO/LPS10942820090806122158/130.39.63.4http://purl.access.gpo.gov/GPO/LPS8928720090806132525/130.39.68.45http://purl.access.gpo.gov/GPO/LPS2469220090806154939/130.39.63.124http://purl.access.gpo.gov/GPO/LPS8766320090807120650/159.39.48.148http://purl.access.gpo.gov/GPO/LPS11380620090807120900/159.39.48.148http://purl.access.gpo.gov/GPO/LPS11380620090807120922/159.39.48.148http://purl.access.gpo.gov/GPO/LPS11380620090807120953/159.39.48.148http://purl.access.gpo.gov/GPO/LPS11380620090807121023/159.39.48.148http://purl.access.gpo.gov/GPO/LPS11380620090807140206/130.39.92.163http://purl.access.gpo.gov/GPO/LPS3020220090807162140/130.39.216.195http://www.ferc.gov/dccs-filing/elibrary.asp20090809134703/189.7.83.196http://purl.access.gpo.gov/GPO/LPS10746620090810141430/130.39.243.77http://purl.access.gpo.gov/GPO/LPS11315420090810142147/130.39.243.77http://purl.access.gpo.gov/GPO/LPS11315420090810142447/130.39.243.77http://purl.access.gpo.gov/GPO/LPS11315420090810182322/72.207.201.73http://purl.access.gpo.gov/GPO/LPS3020220090811104412/68.226.197.112http://afs.allenpress.com/afsonline/?request=get-archive&issn=1548-864020090811105028/68.226.197.112http://afs.allenpress.com/afsonline/?request=get-archive&issn=1548-86402009081110636/68.226.197.112http://afs.allenpress.com/afsonline/?request=get-archive&issn=1548-864020090811115156/130.39.200.202http://purl.access.gpo.gov/GPO/LPS7374120090811133850/130.39.115.172http://purl.access.gpo.gov/GPO/LPS1117792009081210204/130.70.154.125http://purl.access.gpo.gov/GPO/LPS2537220090812142612/130.39.0.199http://purl.access.gpo.gov/GPO/LPS11182720090812145259/74.248.65.17http://purl.access.gpo.gov/GPO/LPS6592320090813165220/130.39.60.184

This is what the raw data looks like after being transferred to Excel: Columns for date/time, IP address of user, and PURL address of link clicked on by user.

	A	B	C	D	E	F	G	H	I	J	K	L	M	N	O	P	Q
1	20080601150843	130.39.63.105		http://purl.access.gpo.gov/GPO/LPS74422													
2	20080601204319	24.250.74.115		http://purl.access.gpo.gov/GPO/LPS79478													
3	2008060143805	130.39.61.32		http://purl.access.gpo.gov/GPO/LPS4934													
4	20080603105152	130.39.92.252		http://purl.access.gpo.gov/GPO/LPS3427													
5	20080603142538	130.39.63.197		http://purl.access.gpo.gov/GPO/LPS38284													
6	20080603174151	130.39.31.14		http://purl.access.gpo.gov/GPO/LPS21592													
7	20080603174306	130.39.31.14		http://purl.access.gpo.gov/GPO/LPS21592													
8	20080603181525	24.255.85.22		http://purl.access.gpo.gov/GPO/LPS21592													
9	20080604010338	24.248.9.194		http://purl.access.gpo.gov/GPO/LPS75457													
10	20080604072838	68.212.84.226		http://purl.access.gpo.gov/GPO/LPS92987													
11	20080604072909	68.212.84.226		http://purl.access.gpo.gov/GPO/LPS92931													
12	20080604072927	68.212.84.226		http://purl.access.gpo.gov/GPO/LPS92874													
13	20080604073042	68.212.84.226		http://purl.access.gpo.gov/GPO/LPS92518													
14	20080604073215	68.212.84.226		http://purl.access.gpo.gov/GPO/LPS87815													
15	20080604073313	68.212.84.226		http://purl.access.gpo.gov/GPO/LPS88405													
16	20080604092400	75.66.228.23		http://purl.access.gpo.gov/GPO/LPS44028													
17	20080604093831	72.207.216.175		http://purl.access.gpo.gov/GPO/LPS72248													
18	20080604125606	130.39.215.246		http://purl.access.gpo.gov/GPO/LPS34574													
19	20080604133641	130.39.92.161		http://purl.access.gpo.gov/GPO/LPS57227													
20	20080604134311	130.39.101.35		http://purl.access.gpo.gov/GPO/LPS19698													
21	20080604162349	130.39.60.184		http://purl.access.gpo.gov/GPO/LPS84283													
22	20080604175727	75.65.114.119		http://purl.access.gpo.gov/GPO/LPS73621													
23	200806050114115	169.200.185.24		http://purl.access.gpo.gov/GPO/LPS76855													
24	20080605062453	24.254.42.148		http://purl.access.gpo.gov/GPO/LPS200													
25	20080605090546	64.194.54.51		http://purl.access.gpo.gov/GPO/LPS87686													
26	20080605091517	64.194.54.51		http://purl.access.gpo.gov/GPO/LPS89705													
27	20080605092011	64.194.54.51		http://purl.access.gpo.gov/GPO/LPS89096													
28	20080605092028	64.194.54.51		http://purl.access.gpo.gov/GPO/LPS88537													
29	20080605154601	130.39.62.108		http://purl.access.gpo.gov/GPO/LPS49338													
30	20080605154646	130.39.62.108		http://purl.access.gpo.gov/GPO/LPS49338													

10/19/2009 LOUISIANA STATE UNIVERSITY 13

URL Hit List 2008: Remember This?

2008 March	426
2008 April	672
2008 May	223
2008 June	104
2008 July	198
2008 August	129
2008 September	385
2008 October	480
2008 November	972
2008 December	191
total	3780

10/19/2009 LOUISIANA STATE UNIVERSITY 14



So, Why does it matter?

- Technical tools make it possible to count hits.
 - What we do with those numbers is becoming more and more important.
 - As we keep hearing, our services—resources, expertise—are being called into question in terms of the bottom line.
 - What does it mean to be a depository library?
 - We are being asked to justify our existence.
-



Relying on the Numbers

- Adding our stats on URL click-throughs to our stats on tangible item use (circulation stats; shelving stats), gives a more accurate picture.
 - Oh, and did I mention that our circulation stats continue to climb?
 - Contrary to the received wisdom that “nobody uses books anymore,” our tangible materials are being used more frequently.
 - Since 2007, our circulation charges have increased by 31%.
-



What does any of this mean?

- Talking point #1:
 - A good academic library needs government materials in multiple formats to suit the needs of a variety of patrons.
 - Talking point #2:
 - Keeping accurate statistics allows you to prove to your administration that you are serving the needs of a variety of patrons.
 - Talking point #3:
 - Your depository collection is still a vital part of your library's mission, and you can prove it with the numbers.
-

Looking at Hearings: Online versus Print Usage

Experiences at the University of Colorado-Boulder



Jennifer Gerke, University of Colorado at Boulder
jennifer.gerke@colorado.edu

The Questions:

If a patron has access to both print and online, which will they choose?
Are there any factors that drive use of one format over another?

Finding some answers

- Step 1: Select a collection that has both print and online titles.
- Step 2: Find a way to track on the title level both print and online use.
- Step 3: Track use for a year.
- Step 4: See what the data can tell us.

Step 1: Choosing a Collection

- What titles get used in print that are online?
- What collection has enough titles to generate a decent sample set in a year?
- At CU-Boulder hearings circulated 497 times in 2008, making up 28% of the total circulation of federal documents. The majority of current hearings are online and have been since the late 90s.

Hearings: A Few Factors

- Merged versus Separate Records
 - To avoid having to correct for patrons discovery of only one of the records with a particular format, only merged records were in the sample set.
- Adding new titles
 - All the titles discussed in this project were in the catalog on September 21, 2008.

Step 2: How to track the data

- Print
 - Circulation counts were tracked by the OPAC
 - In-house use was already being collected for all materials in the government publications collection
- Online
 - A Cold Fusion script from University of Denver was used to count each use. This captured:
 - Date and time of click
 - IP address of person who clicked
 - URL clicked
 - Where accessed from (this didn't always work)

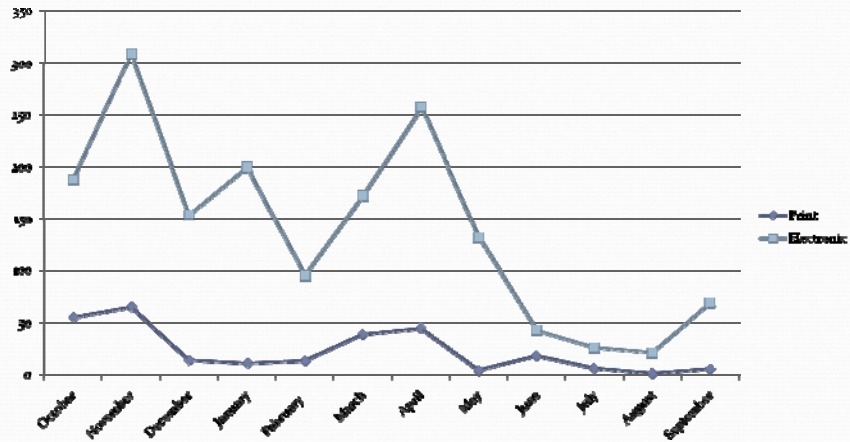
Step 3: Track for a year

- There were 9048 hearings in the sample set
- The electronic data collection required no upkeep during the year
- Print data was merged once a month

Step 4: The Big Picture

- Hearings in print were used 267 times
- Hearings online were used 1667 times
- 68 hearings were used both in print and online
- 11.8% of the hearings studied were used
- 58.7% of the used print titles were only used in print
- 92.9% of the used electronic titles were used only online

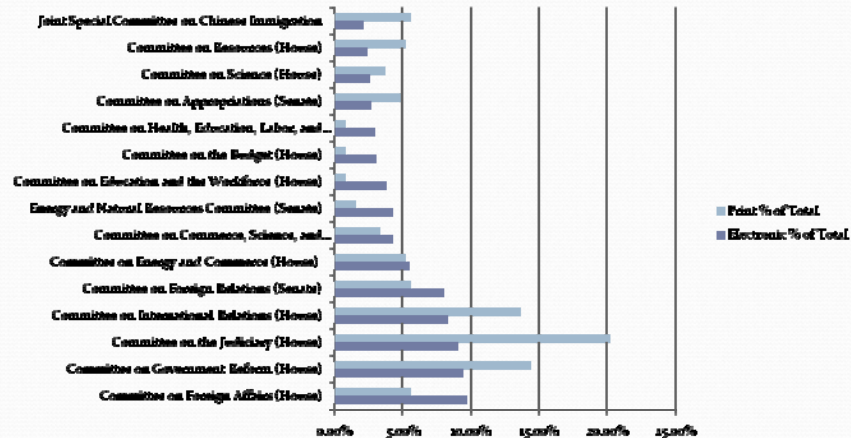
Usage Over Course of Study



Page counts of Used Hearings

- Print Average page count: 132
- Electronic Average page count: 112

Top 15 Committees Used



Used in Print and Online

- If a book is checked out, then the electronic version is likely to be used in the months until it is returned.
- For most titles there is not a click on the electronic version before checkout of a print format.
- These hearings have an average page count of 116, within the range of the print and electronic titles.

What I learned

- Don't need so many titles
- Merging data sets from different sources is time consuming
- Despite the fact that the link is only in the catalog, bots can still find you. I had two bots discover the script and had to remove several thousand records from my data set.

Do we have any answers?

- Just because a book is big or small does not drive the form of use
- Checking out a book drives electronic use
- Electronic usage is higher than print usage
- BUT....
 - Print use still appears to serve a user need. At least at this one institution in this one year.



Future Steps

- Publication of more in-depth analysis of the data
- Data is still being collected to see if patterns change over time.
- A study of user behavior with hearings to help answer questions that this data does not capture.