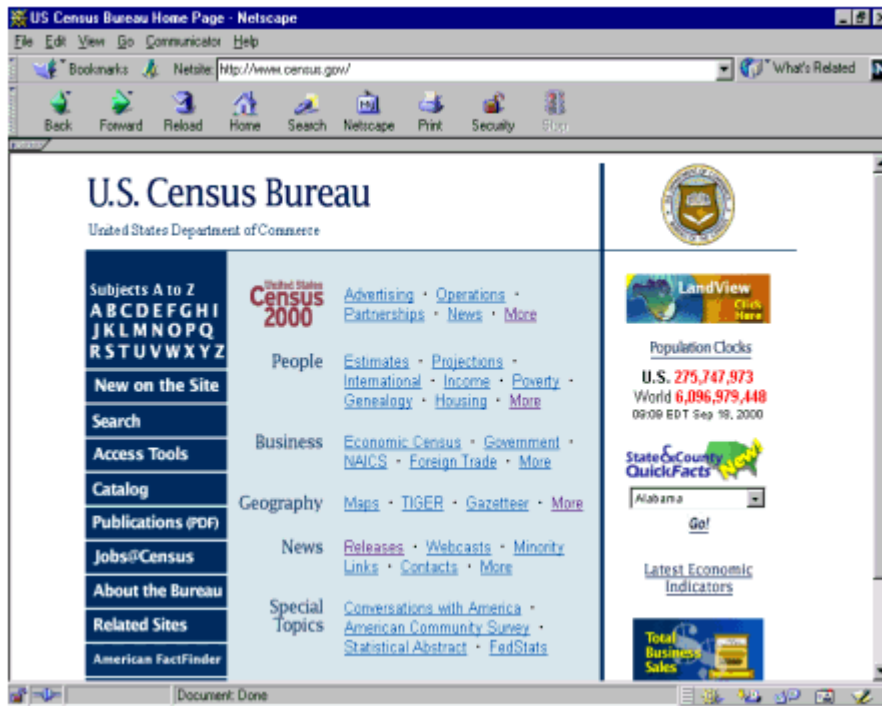


Proceedings of the 9th Annual Federal Depository Library Conference

October 22 - 25, 2000

Delivering Census 2000 Information to Users

John Kavaliunas, U.S. Census Bureau
Washington, DC



Census 2000 Data Products

Our Goal: To deliver timely information in appropriate formats to a variety of customer groups.

Major Product Lines

- Products: Summary Files, Profiles, Quick Tables, Geographic Comparison Tables, printed reports, maps, microdata
- Media: Internet, CD-ROMs, DVDs, publications

- Formats: ASCII, PDF, custom, other

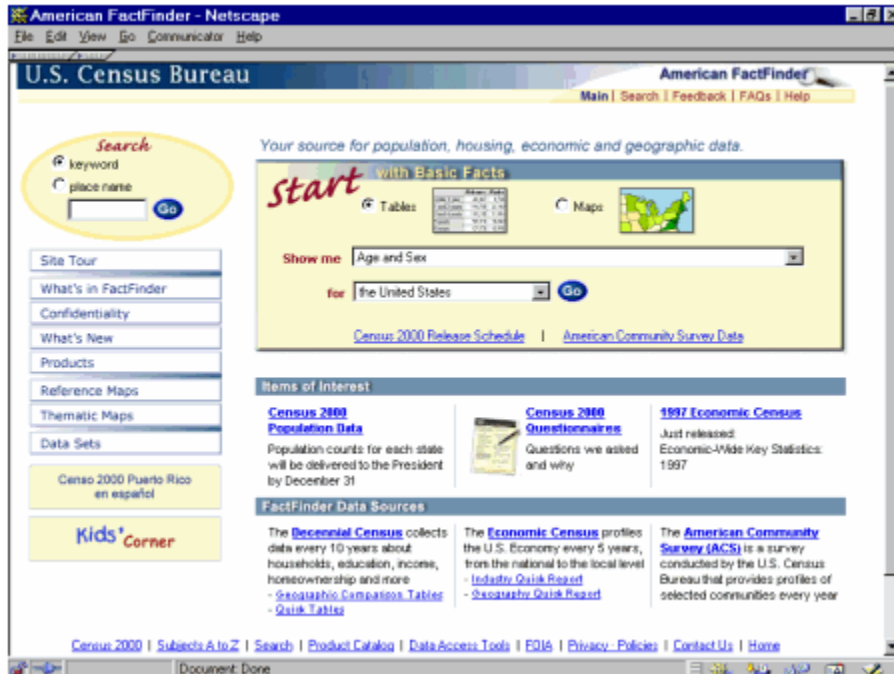
Media

- Internet
- CD-ROM /DVD
- Paper

Internet

- Data released first on American FactFinder
- Community profiles available under QuickFacts
- Printed reports available in Portable Document Format (PDF)
- Maps available in Portable Document Format (PDF)
- Download (FTP) option





CD-ROM/DVD

- Redistricting Summary File and 4 series of detailed tables similar to 1990 STFs
- Profiles, Quick Tables, Geographic Comparison Tables, and printed reports (PDF)
- Maps (PDF)
- Access software
- Formats

Paper

- 3 Series of printed reports
 - Summary Population and Housing Characteristics - Summary Social, Economic and Housing Characteristics - Population and Housing Unit Totals
- Maps
 - Census Block Maps - Census Tract Outline Maps - Reference Maps
- Print on demand

Redistricting Summary File

- Total population and 18-and-over population by 63 race categories and Hispanic/Latino
- Lowest level of geography: block
- Release date: March 2001

100-Percent Summary Files

Summary File 1

- Counts and cross tabulations

Summary File 2

- Tables reiterated by race, Hispanic/Latino, and American Indian and Alaska Native Tribes

Sample Data Summary Files

Summary File 3

- Counts and cross tabulations

Summary File 4

- Tables reiterated by race, Hispanic/Latino, and American Indian and Alaska Native Tribes, and ancestry

Demographic Profiles

100-Percent data profile

Sample data profiles

Census 2000 Data Products

Quick Tables

Geographic Comparison Tables

Maps and Related Products

- Census 2000 TIGER/Line Files
- Census Block Maps (County and Governmental Units)
- Census Tract Outline Maps
- Boundary Files

Census 2000 TIGER/Line Files

- January/February 2001 release without ZCTAs or final address ranges
- March release with complete geography

Census Block Maps

- Paper (January/February 2001) (May 2001)
- HPGL (March 2001) (June 2001)
- PDF (April/May 2001) (July 2001)

Census Tract Outline Maps

- Paper, Internet, DVD
- PDF and HPGL
- Various releases: January through May 2001

Boundary Files

- Suitable for desktop mapping
- Internet
- Summer 2001

Public Use Microdata Files

- Unaggregated records of responses to Census 2000 with all identifying information removed
- Two Files

- 1-Percent National Characteristics File - 5-Percent State Files

- 100,000 population threshold for geography
- 10,000 population threshold for characteristics

Timeline for Census 2000 Data

- December 31, 2000: Official apportionment counts
- April 1, 2001: Data for 63 race groups and Hispanic/Latino by block
- Summer 2001: 100-percent counts and characteristics
- Summer 2002: Sample data products

For more information:

<http://www.census.gov>