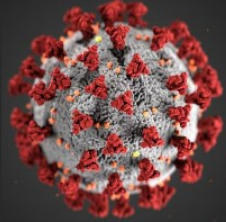


COVID-19 HUB

Demographic and Economic Resources

U.S. Census Bureau

<https://covid19.census.gov/>

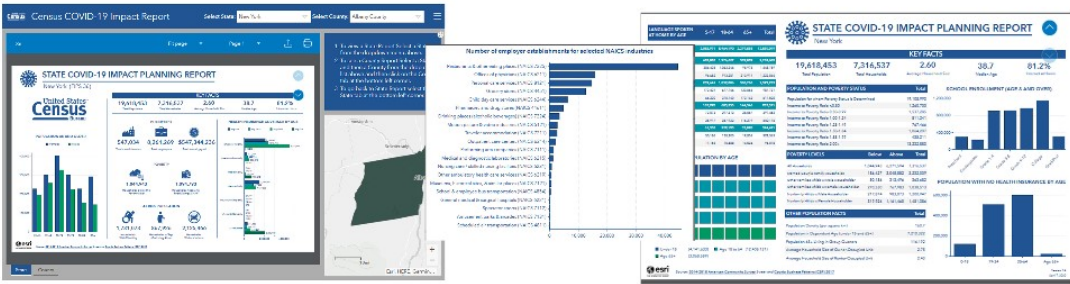


The U.S. Census Bureau's COVID-19 Hub contains demographic and economic data designed to help guide decision-making related to the COVID-19 pandemic. The interactive platform includes key demographic data from the American Community Survey, and key data on businesses from County Business Patterns, Nonemployer Statistics, Business Formation Statistics and other programs. The hub was built in collaboration with ESRI and leverages many features of the ArcGIS platform and solution templates

The platform, released as a beta version, will be updated periodically as the COVID-19 recovery evolves and as we receive feedback from users. Key features of this platform are described below.

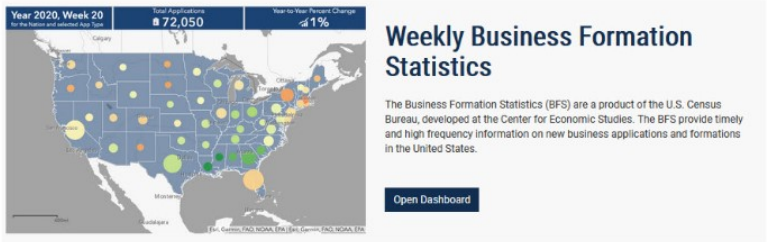
Impact Planning Report

The COVID-19 Impact Planning Report allows users to browse dashboards with key demographic and business data for the nation, states and counties. Information is presented in an interactive, two-sheet visualization that allows for further exploration and downloading.



Weekly Business Formation Statistics

The Business Formation Statistics (BFS) are a product of the U.S. Census Bureau, developed at the Center for Economic Studies. The BFS provide timely and high frequency information on new business applications and formations in the United States.



Highlighted Census Programs

These Census Bureau experimental data products are innovative statistical products created using new data sources or methodologies that benefit data users in the absence of other relevant products.



Household Pulse Survey

This is a 20-minute online survey starting from the COVID-19 pandemic to improve the economic picture across the country from a social and economic perspective. The survey asks about how people behave, access to food, health, housing, and other quality of life and how the world has been affected by the ongoing crisis.

[Read More](#)



Small Business Pulse Survey

This experimental survey measures the changes in business confidence, on-site workers, sales, and business during the coronavirus (COVID-19) pandemic. Business Pulse complements existing U.S. Census Bureau data collection by providing high-frequency, localized information on small business-specific activities such as the Paycheck Protection Program.

[Read More](#)



Community Resilience Estimates (CRE)

The capacity of individuals and households within a community to absorb, endure, and recover from the health, social, and economic impacts of a disaster.

[Read More](#)



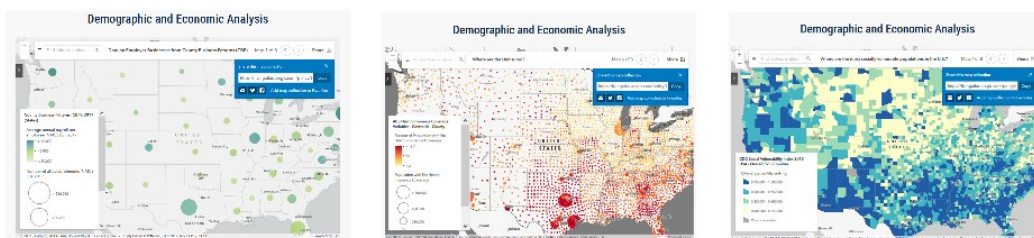
U.S. Department of Commerce
U.S. CENSUS BUREAU
census.gov

connect with us on social media
[@uscensusbureau](#)

June 29, 2020

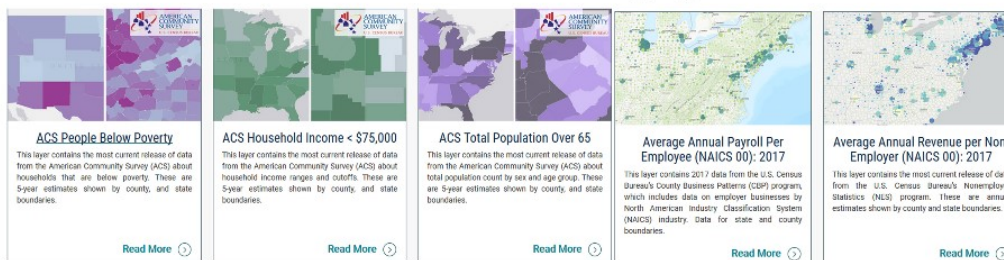
Demographic and Economic Analysis

The Demographic and Economic Analysis policy maps provide additional details for selected statistics in interactive maps that can be incorporated into the user's own products.



Highlighted Datasets

The Highlighted Datasets allow users to access the interactive maps and layers in ArcGIS for four of the key datasets included in the Impact Planning Report: average annual payroll per employee, people below poverty, household income <\$75,000, and total population over 65. Users can include these datasets in their own mapping products.



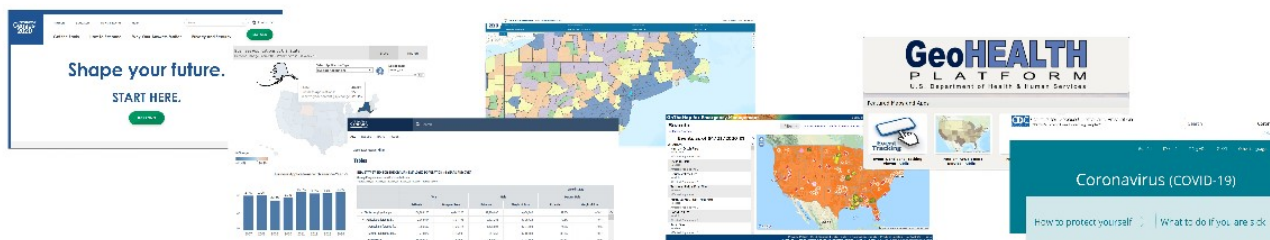
Categorical Datasets Search

The Categorical Datasets Search banner allows users to select a data theme and to find, reference, and download (in map service and Excel formats) the Census Bureau data that interests them.



Other Census Bureau Data Products

The site also includes direct links to other Census Bureau data products and tools that provide additional information to guide decision-making. These include the new Business Formation Statistics, data.census.gov, Census Business Builder, and OnTheMap for Emergency Management. It also includes other federal resources including the CDC COVID-19 Site and HHS GeoHealth.



Contact information:

For questions about the business programs:
E-mail: ewd.outreach@census.gov

For questions about the American Community Survey:
E-mail: aco.users.support@census.gov