



2019 Fall DLC Conference

BLURRING THE GOVERNMENT

DOCUMENTS LINES

*How one research project changed
perceptions and promoted collections*

HAYLEY JOHNSON & SARAH SIMMS

GOV DOCS

An uncomfortable truth

More often than not, people that we come into contact with really don't know what government documents are.

COINCIDENCE & opportunity

- Uncover a “hidden history”
- Do something outside of our comfort zone
- Aligned with our past history of librarianship as social justice



The project

THROUGH AN EXTENDED LENS

- **Historical research within gov docs**
- **Outside of the depository system**
- **Showcasing the research that can be done**



Archives & GOVERNMENT DOCUMENTS

- History as a tool to redefine or destroy assumptions and prejudices
- Government Documents as a special collection

FOCUS ON...

It's Constitution Day so
Listen to George

Your research isn't complete until you've checked Gov Docs!.

GOVERNMENT DOCUMENTS
SERVING LSU SINCE 1907

Email:
LIBGOVDOCS@LSU.EDU

- Gov docs as research tool
- Approach to information literacy



GOAL

To share a hidden history as
widely as possible

Johnson & Simms

So...

Librarians are great

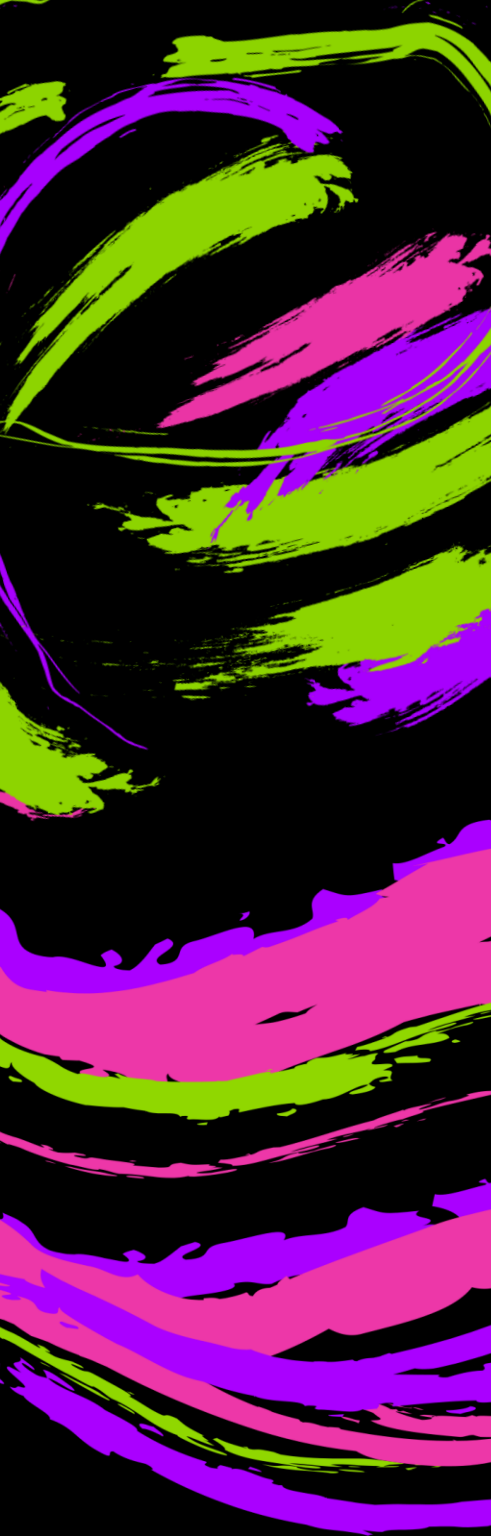
but they were NOT our target
audience

Historians are okay

But their conferences are.....

Different!

- **Unprepared for the new environment we found ourselves in**
- **Must be quick studies**



Existing perceptions

ACADEMIC LIBRARIANS

- Answer reference questions
- Teach students about databases
- Order books
- Don't do personal/original research outside of librarianship



Shifting the perspective

**Strategic, Honest, and
Enterprising**

Johnson & Simms

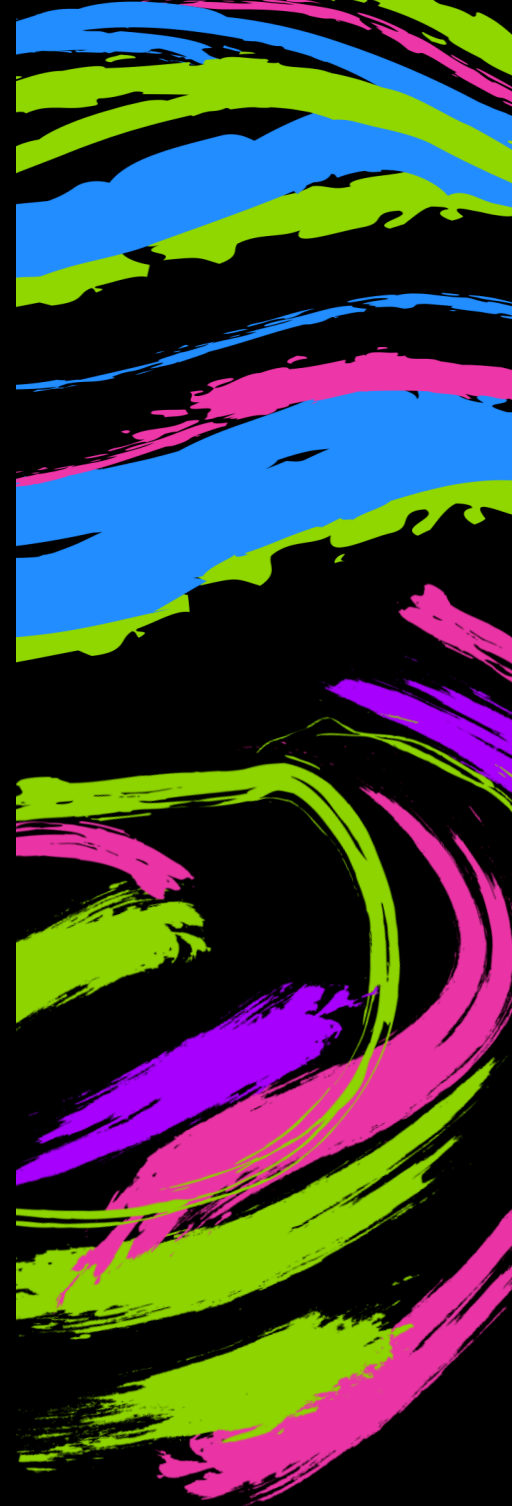
STRATEGY

Building a roadmap

- Choosing conferences
- Building in research time while traveling
- Website with bibliography

<https://www.extendedlens.org/>

- Timeliness of topic

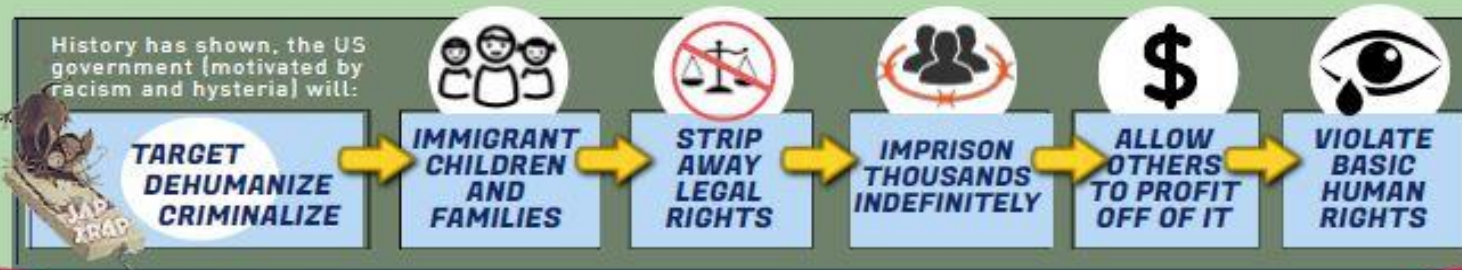


CLOSE THE CAMPS!

NEVER AGAIN IS NOW



WE'VE BEEN DOWN THIS ROAD BEFORE...

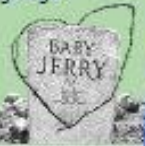


1942 JAPANESE AMERICAN CONCENTRATION CAMPS | ASYLUM SEEKER CONCENTRATION CAMPS **2019**

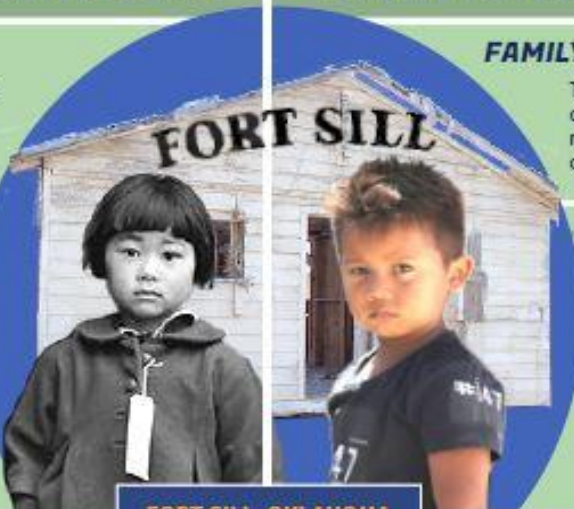
3.5 YEARS People of Japanese Descent
125,000
60 INTERNMENT CAMPS

INCALCULABLE LOSS

The forced removal of Japanese Americans and immigrants to camps across the country - resulted in the loss of freedom, rights, property, dignity and the erosion of our language and culture. Some even lost their lives due to stress, harsh living conditions, lack of medical care, or were shot by guards.



CULTURE OF SILENCE
 The anger, shame, and trauma of mass incarceration made it difficult for our elders to talk about Camp. Now is the time to talk about our experience and raise our collective voices!



FORT SILL, OKLAHOMA CHILD DETENTION CAMP

END OF 2018 Migrant Children
15,000
100 DETENTION CAMPS

FAMILY SEPARATION

Trump's Family Separation policy resulted in over 2,000 children being illegally and ruthlessly separated from their families - causing irreparable harm and trauma.

KIDS IN CAGES
 Children are being subjected to systematic abuse, deplorable conditions and a lack of basic necessities, and medical care.

“ In a Texas facility, “infants, children and teenagers were being held without adequate food, water or sanitation.” - Associated Press June 2019 ”

JA SURVIVORS SPEAK OUT! | **CHILDREN DYING IN CAMPS**

Japanese Americans for Justice
 Close the Camps Infographic
<http://www.jasforjustice.com/>



Honest &

OPEN TO LEARNING

- Not PhDs in this area
- Creating connections to students – same pain points in research process

Enterprising:

Utilizing initiative & resourcefulness

- Approaching universities and programs to present
- Not being afraid to “cold” contact *anyone*
- Stretching beyond comfort zone of usual librarian role
- Self-promotion/marketing

TEDxLSU



<https://youtu.be/Sa1LCFxM6CU>

Johnson & Simms

highlights

- **Research is important.**
- **Never know how something will connect with a larger movement, inform our teaching, or how we market our collections.**
- **Don't be afraid to be your own cheerleader.**

COMMENTS & QUESTIONS

Contact us

Hayley Johnson
hjohnson1@lsu.edu

Sarah Simms
sarahlynnsimms@lsu.edu