

Electronic Collection Management

Depository Library Council Meeting

Tuesday, October 18, 2011

8:30 AM



there are zombies in my OPAC

**Michele McKnelly, Chalmer Davee Library
University of Wisconsin River Falls
michele.mcknelly@uwrf.edu**

Image shamelessly stolen from <http://www.bt.cdc.gov/socialmedia/zombies.asp>,
Preparedness 101: Zombie Apocalypse

UWRF MFHD counts

Gov Elec	1005
Gov Fed	31128
Gov Fed-NC	12336
Gov Fiche	39544
Gov Online	46135

A zombie record

Title: Alcohol problems among emergency department patients [electronic resource] : proceedings of a research conference on identification and intervention : March 19-21, 2001, Arlington, Virginia / editors Daniel W. Hungerford, Daniel A. Pollock.

Publisher: [Atlanta, Ga.] : Centers for Disease Control and Prevention, National Center for Injury Prevention and Control, [2001]

Internet Link: <http://purl.access.gpo.gov/GPO/LPS27221>

Library Owns: Location

Electronic version use Internet Link

Call Number

HE 20.7952:2003007562

Subject(s): Alcoholism --Diagnosis --Congresses.

Alcoholism --Prevention --Congresses.

Hospitals --Emergency services --Congresses.

Notes: Title from title screen (viewed on Dec. 16, 2003).

Includes bibliographical references.

Mode of access: Internet from CDC web site. Address as of 12/16/03:

<http://www.cdc.gov/ncipc/pub->

res/alcohol%5Fproceedings/alcohol%5Fproceedings.htm; current access available via PURL. ...

Title: Financial analysis of fuel treatments on national forests in the western United States [electronic resource] / Roger D. Fight and R. James Barbour.

Author: Fight, Roger D.

Publisher: Portland, OR : U.S. Dept. of Agriculture, Forest Service, Pacific Northwest Research Station, [2006]

Description: 10 p. : digital, PDF file.

Internet Link: <http://purl.access.gpo.gov/GPO/LPS80389>

Library Owns: Location

Call Number

Electronic version use Internet Link

A 13.79:PNW-RN-555

Location: Electronic version use Internet Link

Series: Research note PNW ; 555.

Subject(s): Forest thinning --Economic aspects --West (U.S.)

Prescribed burning --Economic aspects --West (U.S.)

Forest fires --Prevention and control --Economic aspects --West (U.S.)

....

The series *Research Note PNW* is available via our open URL link resolver (SFX).

This makes usage from commercial databases easier for our users users.



University of Wisconsin-River Falls linking service

Source: Research note PNW [0737-7150]

Full Text

 [Full text available via](#) Open Access E-Journals


Available from 1997 issue:522

Note: Open Access full text is available for some or all content. Open Access or free content is determined by the publisher and subject to change.

Holding information

 [Check for print or microform issues using the](#) Library Catalog

ILL

 [Interlibrary Loan](#), use when full text, print or microform copies are not available in the library

[More Options](#) ▾

The background features a complex, abstract graphic design. It consists of several overlapping, swirling lines in shades of gray, orange, and yellow. Some of these lines form circular or semi-circular paths, resembling orbits or data paths. There are also several arrowheads pointing in various directions, suggesting movement or flow. The overall aesthetic is modern and technical, fitting for a presentation about a reporting tool.

PURL Referral Reporting Tool

Karen Sieder

Manager, Web Content Management
Library Services and Content Management
U.S. Government Printing Office

The background features a complex, abstract graphic design. It consists of several overlapping, swirling lines in shades of gray, black, and orange. A prominent feature is a large, thick, orange-to-red gradient arrow that curves from the bottom right towards the center. Another similar but thinner arrow is visible in the upper right quadrant. The overall aesthetic is modern and technical, suggesting a digital or data-related theme.

PURL Referral Reporting Tool

Karen Sieger

Manager, Web Content Management
Library Services and Content Management
U.S. Government Printing Office

What is the PURL Referral Reporting Tool?

- Provides statistics for Federal depository libraries of requests made to GPO-created PURLs (<http://purl.access.gpo.gov/>* and <http://purl.fdlp.gov/>*).
- Used to evaluate the total number as well as what types of PURLs are accessed at your institution.
- Statistics are generated daily and are cumulative monthly.
- Historical traffic is available for a minimum of 1 year.
- Export data in comma separated value (CSV) format.
- Tool enhancements are possible based on community prioritization and GPO funding/staffing resources.



<http://purlreferrals.fdlp.gov>

Login with your FDLP Desktop
account credentials.

DEMO: Date/Property Search



FDLP PURL Referrals

View PURL referral statistics for your institution using the form below. Data is compiled through the previous day for the current month. Historical data is available for a maximum of 12 months. Historical and monthly cumulative reports are available in the [file repository](#) of the FDLP Desktop.

Detailed information about PURL referral logic and computation can be found on the [FDLP Desktop](#).

1. Select Timeframe

September 2011 ▾

2. Enter Your Hostname(s) and/or IP Address(es)

Enter **up to 10 combinations** of full or partial hostnames and/or IP addresses (separated by a comma) in the box provided below. Use an asterisk (*) as a wildcard. Search examples: `www.lib.purdue.edu, *.udel.edu, 141.217.41.27, 203.117.*.*`

(Enter a maximum of 10 entries)

```
www.lib.purdue.edu, *.udel.edu,  
159.238.78.170, 213.55.*.*
```

Generate Report

DEMO: Basic Stat Output



FDLP PURL Referrals

Results for September 2011

Hostname/IP Address	Referrals
www.lib.purdue.edu	50
*.udel.edu	517
159.238.78.170	16
213.55.*.*	2
<hr/>	
Total	585

[Export results in CSV format](#)

[<- New Search](#)

DEMO: Detail Stat Report



FDLP PURL Referrals

Detailed Report

www.lib.purdue.edu received a total of 50 referral(s) for September 2011. The following is a listing of the top referred PURL resources (maximum 50).

PURL	Target URL	# of Referrals	CGP Search
/GPO/LPS1063	http://www.nass.usda.gov/Publications/Ag_Statistics/index.asp	24	Go
/GPO/LPS2430	http://bjs.ojp.usdoj.gov/index.cfm?ty=pbse&sid=4	7	Go
/GPO/LPS20319	http://www.usdoj.gov/eoir/OcahoMain/ocahosibpage.htm	7	Go
/GPO/LPS3281	http://govinfo.library.unt.edu/ngisc/reports/finrpt.html	3	Go
/GPO/LPS40400	http://www.dhs.gov/files/statistics/publications/yearbook.shtm	3	Go
/GPO/LPS6500	http://www.whitehousedrugpolicy.gov/policy/ndcs.html	2	Go
/GPO/LPS78393	http://webharvest.gov/peth04/20041031181656/http://www.usdoj.gov/eoir/vll/intdec/lib_indecitnet.html	1	Go
/GPO/LPS31411	http://permanent.access.gpo.gov/lps31411/	1	Go
/GPO/LPS49755	http://www.ncjrs.gov/pdffiles1/nij/199408.pdf	1	Go
/GPO/LPS83224	http://permanent.access.gpo.gov/lps83224	1	Go

[Export results in CSV format](#)

[<- New Search](#)

DEMO: CGP Search Result

Search the CGP / BASIC / ADVANCED / EXPERT / BROWSE / NEW TITLES / HELP / ABOUT

CATALOG OF U.S. GOVERNMENT PUBLICATIONS

Catalogs to Search:

[Congressional Serial Set](#) [GPO Access Publications](#) [Periodicals](#)
[Congressional Publications](#) [Internet Publications](#) [Serials](#)

My Options:

[Bookshelf](#) [Results list](#)
[Preferences](#) [Previous Searches](#)



[Catalog of U.S. Government Publications Home Page](#) > [National Bibliography of U.S. Government Publications](#)

Selected records (checked below): [View Selected](#) | [E-mail](#) | [Create Subset](#) | [Add to Bookshelf](#)

Whole record set: [Select All](#) | [Deselect All](#) | [Rank](#) | [Refine](#)

Results for W-URL= LPS1063

Sort options: | [Year\(d\)/Title](#) | [Year\(a\)/Title](#) | [Title/Year\(d\)](#) | [SuDoc \(a\)](#)

Display options: [Extended](#) | [Brief](#)

Records 1 - 1 of 1 (maximum display and sort is 2000 records)

Jump to #

[Previous Page](#) [Next Page](#)

#	Title	Year	Author	SuDoc Number	Internet Access
1	<input type="checkbox"/> Agricultural statistics (Washington, D.C. : Online)	1936		A 1.47:	http://purl.access.gpo.gov/GPO/LPS1063

[Previous Page](#) [Next Page](#)

You can revise your search:

WUR = (LPS1063)

Select a Catalog:

National Bibliography of U.S. Government Publications

DEMO: CGP Record View

Search the CGP / BASIC / ADVANCED / EXPERT / BROWSE / NEW TITLES / HELP / ABOUT

CATALOG OF U.S. GOVERNMENT PUBLICATIONS

Catalogs to Search:
[Congressional Serial Set](#) [GPO Access Publications](#) [Periodicals](#)
[Congressional Publications](#) [Internet Publications](#) [Serials](#)

My Options:
[Bookshelf](#) [Results list](#)
[Preferences](#) [Previous Searches](#)



[Catalog of U.S. Government Publications Home Page](#) > National Bibliography of U.S. Government Publications

[Add to My Bookshelf](#) | [E-mail](#)

Full View of Record

Choose format: [Standard](#) | [Short](#) | [MARC](#)

Record 1 out of 1 [◀ Previous Record](#) [Next Record ▶](#)

Title	Agricultural statistics [electronic resource] /
Publisher Info.	Washington, DC : U.S. Dept. of Agriculture, National Agricultural Statistics Service
Internet Access	http://purl.access.gpo.gov/GPO/LPS1063
SuDoc Number	A 1.47:
ISSN	0082-9714
Item Number	0001 0001-A-01 (online)
LC Number	HD1751 HD1751 .A43
Uniform Title	Agricultural statistics (Washington, D.C. : Online)
Variation of Title	HTML header title: USDA-National Agricultural Statistics Service, agricultural statistics
Publication Dates	Print began in 1936.

Extracting PURL Usage Data from Log Files

- Based on headers from incoming requests.
- Traffic is routed based on the completeness of the headers.

Preference	Referer	User-Agent	Rating
1	✓	✓	Best
2	✓	–	Better
3	–	✓	Acceptable
4	–	–	Unreportable

- Known ro(bots) and traffic meeting #4 above are not included in the PURL referrals.

Traffic Examples

1. Referrer and User-Agent

```
corb089146.halls.colostate.edu - - [11/Oct/2011:00:02:11 -0400] "GET /GPO/LPS523  
HTTP/1.1" 302 275 "http://lib.colostate.edu/databases/?tab=subject" "" Mozilla/5.0  
(Windows NT 6.1; WOW64; rv:6.0.2) Gecko/20100101 Firefox/6.0.2 ""
```

2. Referrer with No User-Agent

```
lawn-143-215-125-101.lawn.gatech.edu - - [11/Oct/2011:00:12:53 -0400] "GET  
/GPO/LPS121195 HTTP/1.1" 302 327  
"http://portal.library.gatech.edu/vufind/Record/925734" ""
```

3. User-Agent with No Referrer

```
proxy.library.jhu.edu - - [11/Oct/2011:00:10:32 -0400] "GET /GPO/LPS118215 HTTP/1.1"  
302 382 "-" "" Mozilla/4.0 (compatible; MSIE 8.0; Windows NT 6.0; Trident/4.0; GTB7.1;  
.NET4.0C) ""
```

4. Neither Referrer Nor User-Agent

```
library.uh.edu - - [11/Oct/2011:00:01:38 -0400] "GET /GPO/LPS3605 HTTP/1.0"  
302 298 "-" "-"
```

Why Not Include All Traffic?

```
alpha3.suffolk.lib.ny.us -- [30/Sep/2011:02:05:33 -0400] "GET /GPO/LPS3580 HTTP/1.0" 302 290 "-" "-"
alpha3.suffolk.lib.ny.us -- [30/Sep/2011:02:05:33 -0400] "GET /GPO/LPS1458/ HTTP/1.0" 404 1242 "-" "-"
alpha3.suffolk.lib.ny.us -- [30/Sep/2011:02:05:33 -0400] "GET /GPO/LPS2649 HTTP/1.0" 302 264 "-" "-"
alpha3.suffolk.lib.ny.us -- [30/Sep/2011:02:05:33 -0400] "GET /GPO/LPS2314 HTTP/1.0" 302 288 "-" "-"
alpha3.suffolk.lib.ny.us -- [30/Sep/2011:02:05:33 -0400] "GET /GPO/LPS5735 HTTP/1.0" 302 266 "-" "-"
alpha3.suffolk.lib.ny.us -- [30/Sep/2011:02:05:33 -0400] "GET /GPO/LPS6186 HTTP/1.0" 302 286 "-" "-"
alpha3.suffolk.lib.ny.us -- [30/Sep/2011:02:05:33 -0400] "GET /GPO/LPS194 HTTP/1.0" 302 302 "-" "-"
alpha3.suffolk.lib.ny.us -- [30/Sep/2011:02:05:33 -0400] "GET /GPO/LPS1510 HTTP/1.0" 302 268 "-" "-"
alpha3.suffolk.lib.ny.us -- [30/Sep/2011:02:05:33 -0400] "GET /GPO/LPS547 HTTP/1.0" 302 281 "-" "-"
alpha3.suffolk.lib.ny.us -- [30/Sep/2011:02:05:33 -0400] "GET /GPO/LPS547 HTTP/1.0" 302 281 "-" "-"
alpha3.suffolk.lib.ny.us -- [30/Sep/2011:02:05:33 -0400] "GET /GPO/LPS4842 HTTP/1.0" 302 331 "-" "-"
alpha3.suffolk.lib.ny.us -- [30/Sep/2011:02:05:33 -0400] "GET /GPO/LPS4300 HTTP/1.0" 302 283 "-" "-"
alpha3.suffolk.lib.ny.us -- [30/Sep/2011:02:05:33 -0400] "GET /GPO/LPS1222 HTTP/1.0" 302 310 "-" "-"
alpha3.suffolk.lib.ny.us -- [30/Sep/2011:02:05:33 -0400] "GET /GPO/LPS2251 HTTP/1.0" 302 275 "-" "-"
alpha3.suffolk.lib.ny.us -- [30/Sep/2011:02:05:33 -0400] "GET /GPO/LPS3361 HTTP/1.0" 302 256 "-" "-"
alpha3.suffolk.lib.ny.us -- [30/Sep/2011:02:05:33 -0400] "GET /GPO/LPS3419 HTTP/1.0" 302 305 "-" "-"
alpha3.suffolk.lib.ny.us -- [30/Sep/2011:02:05:33 -0400] "GET /GPO/LPS1692 HTTP/1.0" 302 293 "-" "-"
alpha3.suffolk.lib.ny.us -- [30/Sep/2011:02:05:33 -0400] "GET /GPO/LPS3286 HTTP/1.0" 302 271 "-" "-"
alpha3.suffolk.lib.ny.us -- [30/Sep/2011:02:05:33 -0400] "GET /GPO/LPS5135 HTTP/1.0" 302 280 "-" "-"
alpha3.suffolk.lib.ny.us -- [30/Sep/2011:02:05:33 -0400] "GET /GPO/LPS4225 HTTP/1.0" 302 283 "-" "-"
alpha3.suffolk.lib.ny.us -- [30/Sep/2011:02:05:33 -0400] "GET /GPO/LPS4394 HTTP/1.0" 302 273 "-" "-"
alpha3.suffolk.lib.ny.us -- [30/Sep/2011:02:05:33 -0400] "GET /GPO/LPS5059 HTTP/1.0" 302 269 "-" "-"
alpha3.suffolk.lib.ny.us -- [30/Sep/2011:02:05:33 -0400] "GET /GPO/LPS1517 HTTP/1.0" 302 281 "-" "-"
alpha3.suffolk.lib.ny.us -- [30/Sep/2011:02:05:33 -0400] "GET /GPO/LPS1663 HTTP/1.0" 302 290 "-" "-"
alpha3.suffolk.lib.ny.us -- [30/Sep/2011:02:05:33 -0400] "GET /GPO/LPS4200 HTTP/1.0" 302 288 "-" "-"
alpha3.suffolk.lib.ny.us -- [30/Sep/2011:02:05:33 -0400] "GET /GPO/LPS3289 HTTP/1.0" 302 281 "-" "-"
alpha3.suffolk.lib.ny.us -- [30/Sep/2011:02:05:33 -0400] "GET /GPO/LPS3558 HTTP/1.0" 302 323 "-" "-"
alpha3.suffolk.lib.ny.us -- [30/Sep/2011:02:05:33 -0400] "GET /GPO/LPS533 HTTP/1.0" 302 271 "-" "-"
alpha3.suffolk.lib.ny.us -- [30/Sep/2011:02:05:33 -0400] "GET /GPO/LPS6549 HTTP/1.0" 302 281 "-" "-"
alpha3.suffolk.lib.ny.us -- [30/Sep/2011:02:05:33 -0400] "GET /GPO/LPS3752 HTTP/1.0" 302 288 "-" "-"
alpha3.suffolk.lib.ny.us -- [30/Sep/2011:02:05:33 -0400] "GET /GPO/LPS4942 HTTP/1.0" 302 268 "-" "-"
alpha3.suffolk.lib.ny.us -- [30/Sep/2011:02:05:33 -0400] "GET /GPO/LPS6108 HTTP/1.0" 302 283 "-" "-"
```

- While a PURL is requested, there is no indication that the request is made from a patron.
- Frequency of requests indicates a bot (e.g., link validator).
- Including this type of traffic would erroneously inflate a depository's traffic statistic.

Limitations of the PURL Referral Reporting Tool

- Used only if your institution links to Federal publications using PURLs.
- Is not the sole reporter of patron usage.
- Institutions using a shared OPAC cannot isolate traffic that originated from their institution. Credit is attributed to the shared catalog (based on referer).
- Institutions sending headers with no referrer AND no user-agent need to modify their headers in order to obtain referral statistics.

Insider Tips

- Provide a referrer for the most accurate statistics. Statistics are only as good as the headers provided to GPO.
- Consult your IT department for the hostnames and IP addresses used by your institution. Consider off-campus access through proxy servers.
- Use wildcards for broader searching and use specific addresses to isolate traffic.
- Exclude traffic from staff computers by searching specifically for those workstations. Either subtract those from your institution's overall total or contact GPO to have that traffic rerouted to the bot layer.

Learn More & Help

- Read about PURL referrals and the reporting tool on the FDLP Desktop:
 - Linking to Federal Resources Using Persistent Uniform Resource Locators (PURLs) <http://www.fdlp.gov/collections/building-collections/614-purls>
 - PURL Enhancement and Stabilization <http://www.fdlp.gov/home/about/717-purl-enhancement-and-stabilization>
- Contact me through the FDLP Community site.
 - Private Message @ ksieger
 - FDLP Web Services forum <http://community.fdlp.gov/distribution/viewforum.php?f=67>



Issues with Maintaining Catalog Records and Tracking PURL Usage

John A. Stevenson, University of Delaware
Hugh M. Morris Library
varken@udel.edu



Topics addressed in this presentation:

- Maintaining Catalog Records for the FDLP Electronic Collection
 - Copy cataloging
 - Loading batches with or without “Checking in” the titles
 - Setting holdings in OCLC’s WorldCat
- Tracking online titles’ usage using FDLP published PURL referral reports or creating reports created using the FDLP PURL Referral Tool
- Accuracy of usage counts is dependant on using the PURL
 - Is the PURL the visible link in guides and the catalog?
 - Opportunities for over- and under-counting usage



Maintaining Catalog Records for the FDLP Electronic Collection

Copy cataloging

- Accurate and addresses specific needs
- Like subject guides, labor intensive to create and maintain

Loading batches with or without “checking in” titles

- “Checking in” identifies duplicate & superseded items, errors
- While labor intensive, basic checking can be done by low skill workers and problems referred to high skill workers
- “Checking in” allows retention of records based on local practices
- Loading without checking results in superseded titles remaining in the catalog beyond the first page of results

Setting holdings in OCLC’s WorldCat

- Helps library users discover and locate FDLP materials



Maintaining Catalog Records for the FDLP Electronic Collection (con't)

Maintaining FDLP electronic collection records locally can be costly.

Issues:

- Many libraries load batches of electronic resource records without checking in individual titles due to the perceived cost of checking the records.
- Only problem records identified by users/staff are corrected or suppressed.
- Superseded titles remain in the catalog until identified.

Suggestions to encourage collection maintenance:

- The FDLP could identify superseded titles and records for libraries.
- A database of superseded titles and records would allow lists to be generated. Sources should include GPO catalogers deriving records for new editions, who would be passing the information along for vetting.
- Subject experts working in libraries could also contribute recommendations to an FDLP database of superseded editions for collection management.



Tracking usage of online titles

- Published and customized monthly reports count PURL usage which has a user, a referring agent, or a user and a referring agent
- Both reports count use of the PURL
- Advantages to reports generated by the FDL PURL Referral tool:
 - Customized report has shows only PURL referrals deemed relevant
 - IP addresses of robots (human or automated) are easily excluded
 - Detailed reports are easy to read and the top 50 hits offer insights
- Keep in mind that customized and published reports
 - May not reflect all uses of the resource, e.g., through bookmarks, URL
 - Including each PURL in guides, e.g., LibGuides, requires extra work
- Accuracy of usage counts can be affected by many factors, including these:
 - Whether a PURL displays where users will click on it (to capture usage)
 - Potential for over-counting or under-counting usage



Maintaining the FDLP Electronic Collection in Catalog Records

Conclusions:

- Maintaining local access to the FDLP electronic collection, including the withdrawal of records for superseded titles or “titles no longer available” is a time consuming task for libraries using their catalogs and WorldCat as primary access tools.
- Listing record numbers for superseded records makes updating holdings in library catalogs and WorldCat more efficient. This model should be explored to help FDLP libraries load records and maintain OCLC holdings.
- PURL use can be measured but may not reflect the actual use of federal resources due to display issues and other discovery tools.

Electronic Government Publications

Collection Development Considerations

Susan Kendall
San Jose State University
October 18, 2011



SAN JOSÉ STATE
UNIVERSITY

KING LIBRARY

For additional information: see
<http://www.slideshare.net/freegovinfo/fdlp-handout>

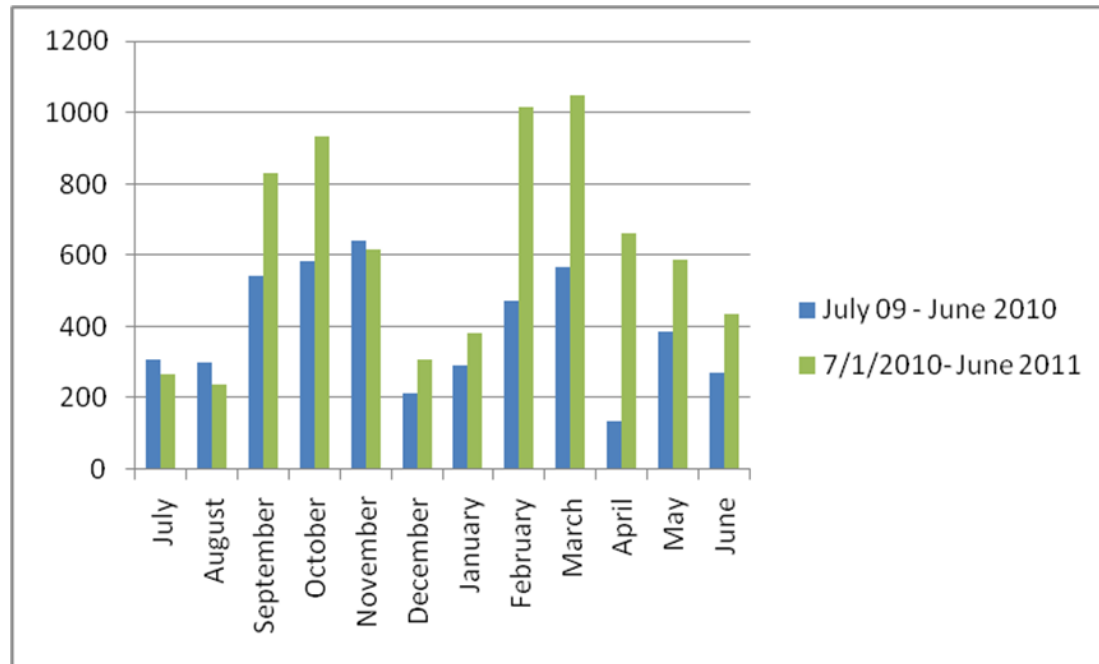


Our e-resource usage is dramatically increasing



- San Jose State, like so many other libraries, has increased the number of electronic resources, including:
 - Government publications
 - Databases
 - Electronic Book packages

E-govpubs stats @SJSU



2009-2010 (**blue**):

4680 full text titles downloaded

2010-2011 (**green**):

7295 full text titles downloaded (so far)

Print use is down

- **Print government publications 2010-2011: 3** checkouts of print versions.
- In-house shelving of government publications:
2009: 1,311 (shelved)
2010: 1,233 (shelved)

Print books from our total circulating collection:

2009---194,051

2010---159,274

Possible reasons for increased use of electronic versions

- More hybrid or distance classes
- Better technology to read item
- Rise of Affordable Learning Solutions
- More patrons are comfortable with online environment
- Convenience



Things learned while reviewing e-govpubs statistics

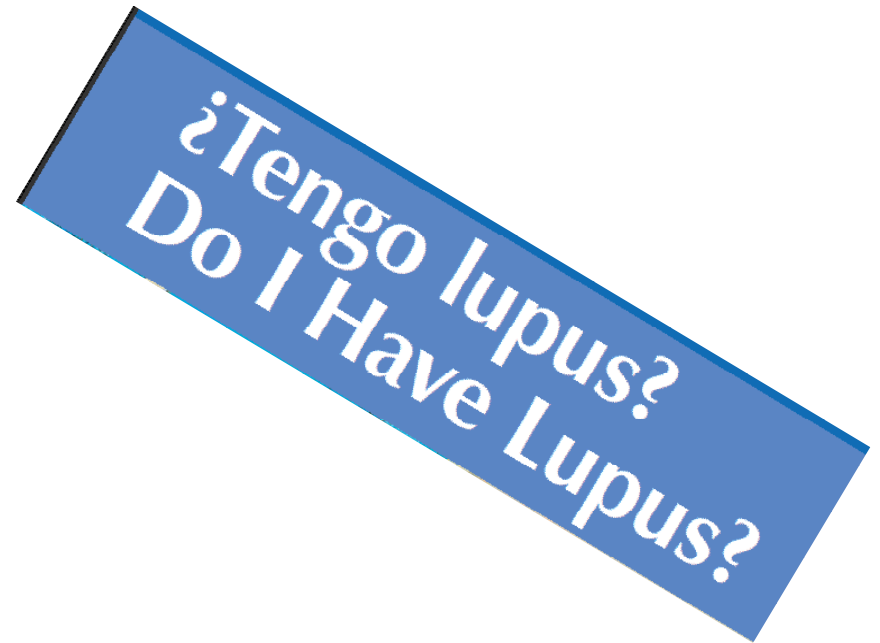
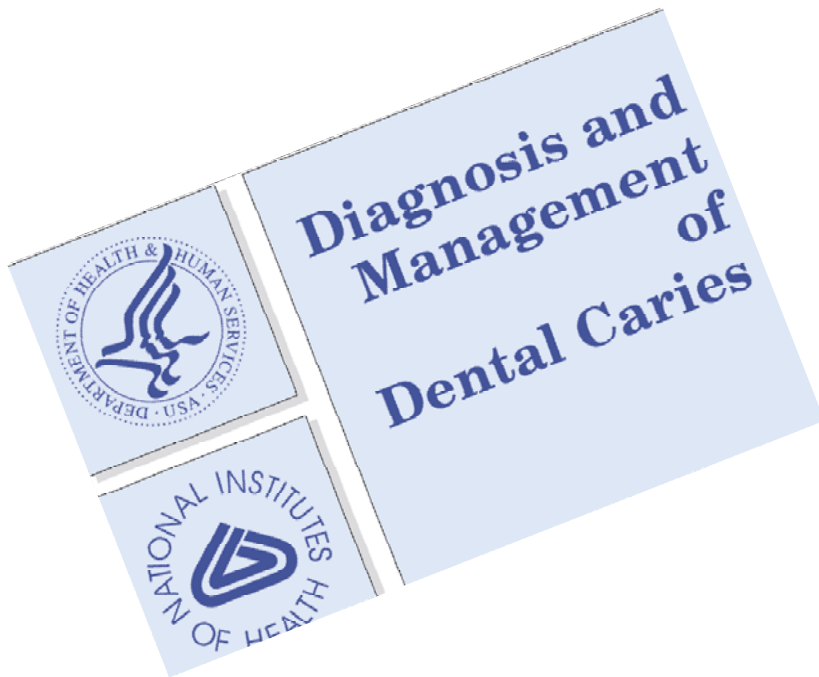
- Most e-government publications accessed match our strongest programs on campus.
- While e-govpubs are indexed in Google Scholar, discovering them seemed easier through the library catalog.

Things learned while reviewing e-govpubs statistics

- Some areas not emphasized at SJSU: for example Military Science publications were accessed
- Many e-govpubs were multidisciplinary in coverage: for example the Danvers Butchery Fire covered not only fire investigation results but also a history of the area.

Things learned while reviewing e-govpubs statistics

- Several Spanish editions used in e-govpubs
- Areas not taught at SJSU accessed: e.g. dental science





Our in-house usage statistics program has been a time-saver

- Initially (2004) we downloaded 37,000 bibliographic records
- Minimum of 2 weeks to run initial database report.

On-going monthly maintenance and time consideration

- Total staff time: approximately 30 to 60 minutes
- Total Machine time: approximately 2 to 4 hours

Conclusions

- E-government publications have been a good support to the SJSU community
- Access by the library's catalog continues to be an important factor
- Next generation catalog should increase use

Conclusions

- Library's offering of more electronic resources may tie in with more e-govpubs use.
- New readers (iPads, e-book readers) are providing ease of use to patrons.

Thank you!
Susan Kendall

October 18, 2011

Documents Clickthroughs: Finding Meaning in the Numbers

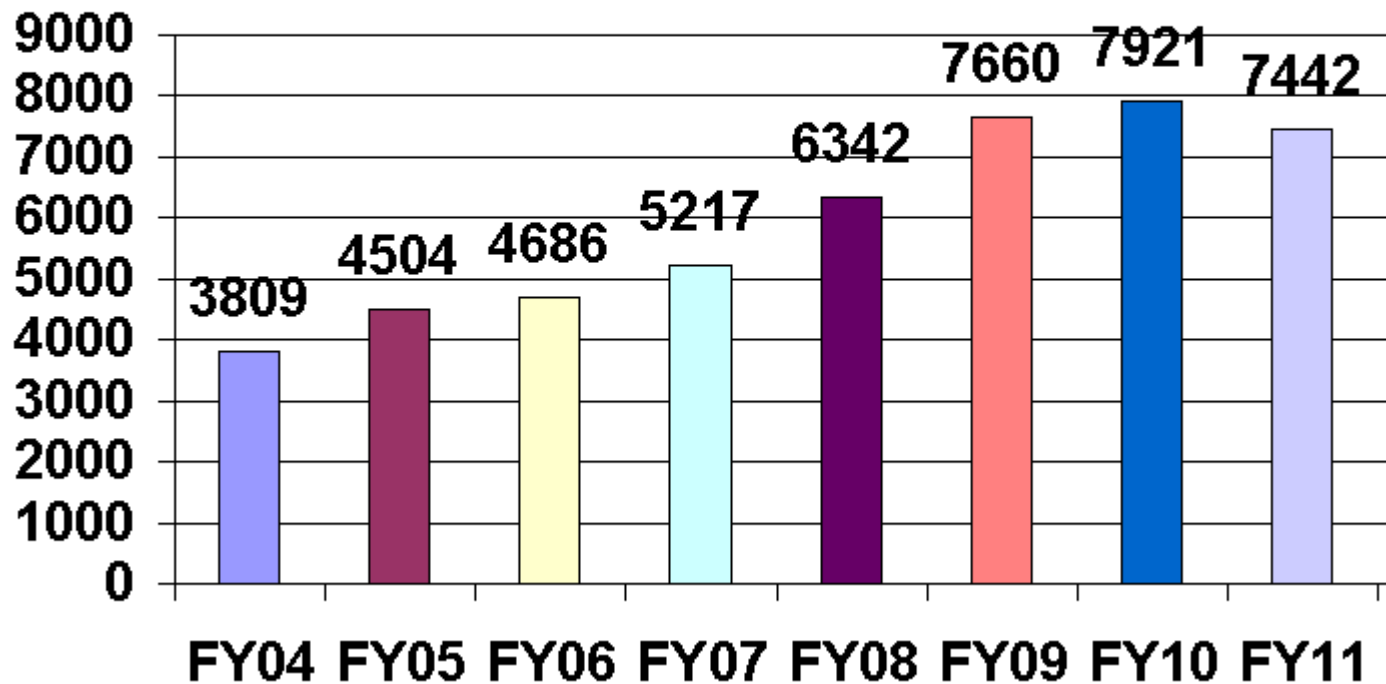
Christopher C. Brown

University of Denver, Penrose Library

cbrown@du.edu


Docs clickthrough data for 8+ years

Activity by FY



Adding a prepfix to the PURL or URL does the trick

n	500		"Issued March 2003."
n	500		"PHC-2-7."
n	530		Also available via Internet from the U.S. Census Bureau web site. Address as of 6/4/03: http://www.census.gov/prod/cen2000/phc-2-7.pdf ; current access is available via PURL.
d	651	0	Colorado vCensus, 2000.
d	651	0	Colorado xPopulation vStatistics.
d	650	0	Housing zColorado vStatistics.
d	651	0	United States vCensus, 2000.
b	710	1	United States. bBureau of the Census.
y	856	4 1	u http://library.du.edu/clickthrough/index.php/clicks/?type=gov&url=http://purl.access.gpo.gov/GPO/LPS31684 zAdobe Acrobat Reader required

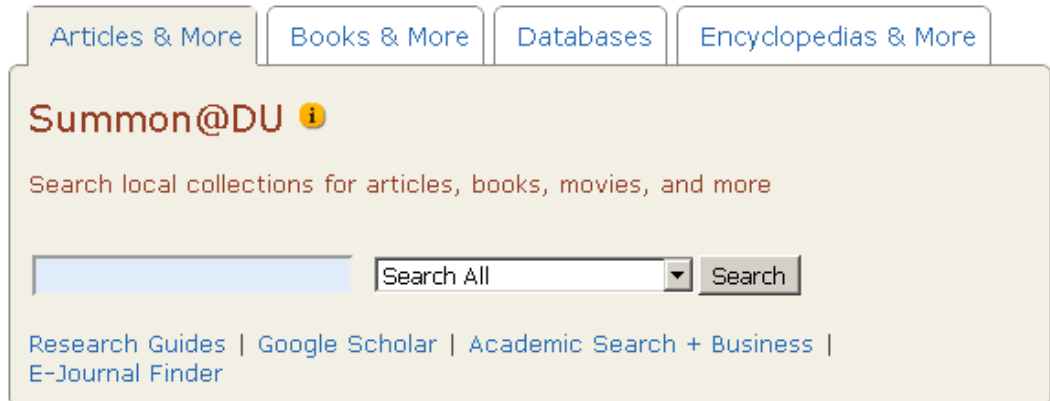


<http://library.du.edu/clickthrough/index.php/clicks/?type=gov&url=>

Three ways users access our OPAC

- Summon – default on library Web site
 - Encore (next-gen) catalog – second tab on library site
 - Classic catalog – buried on library site, but pointed to by Summon
-
- Our clickthrough statistics cannot tell which tool was originally accessed

<http://library.du.edu/>



The screenshot shows the Summon@DU search interface. At the top, there are four tabs: "Articles & More", "Books & More", "Databases", and "Encyclopedias & More". Below the tabs, the text "Summon@DU" is displayed with an information icon. Underneath, it says "Search local collections for articles, books, movies, and more". There is a search input field, a dropdown menu set to "Search All", and a "Search" button. At the bottom, there are links for "Research Guides", "Google Scholar", "Academic Search + Business", and "E-Journal Finder".

Browse by SuDocs stems – an additional access tool

UNIVERSITY OF DENVER News · Events · Directo

PENROSE LIBRARY
connecting people to ideas

STUDENTS FACULTY STAFF ABOUT

Government Documents - Browse

Government Documents

Government Doc #

Result page: [1](#) [2](#) [3](#) [4](#) [5](#) [6](#) [7](#) [8](#) [9](#) [10](#) [11](#) ... [39 Next](#)

Government Doc #s (1-50 of 1911)

Num	Mark		Year
1	<input type="checkbox"/>	A 1.9: Producing cigar tobacco in Pennsylvania / by Orman E. Street. Storage; A 1.9:2001 Storage of ear corn on the farm in the north central states / by C.K. Shedd. Storage; A 1.9:2076 Blueberry growing / by George M. Darrow. Storage; A 1.9:1951 Handling and storing soft corn on the farm / by C.K. Shedd. Storage; A 1.9:1976 6 additional entries	1948 1955 1957 1945
2	<input type="checkbox"/>	A 1.9:2 The work of the Agricultural Experiment Stations. Hampden Docs; A 1.9:2	1890
3	<input type="checkbox"/>	A 1.9:14 Fertilizers for cotton / by J.M. McBryde. Hampden Docs; A 1.9:14	1894
4	<input type="checkbox"/>	A 1.9:16 Leguminous plants for green manuring and for feeding / by E.W. Allen. Hampden Docs; A 1.9:16	1894
5	<input type="checkbox"/>	A 1.9:17 Peach yellows and peach rosette / by Erwin F. Smith. Hampden Docs; A 1.9:17	1894
6	<input type="checkbox"/>	A 1.9:22/rev. The feeding of farm animals / by E.W. Allen. Hampden Docs, Internet ; A 1.9:22/rev.	1901
7	<input type="checkbox"/>	A 1.9:25 Peanuts : culture and uses / R.B. Handy. Hampden Docs; A 1.9:25	1896
8	<input type="checkbox"/>	A 1.9:26 Sweet potatoes : culture and uses / by J.F. Duggar. Hampden Docs; A 1.9:26	1895
9	<input type="checkbox"/>	A 1.9:30 Grape diseases on the Pacific coast / by Newton B. Pierce. Hampden Docs, Storage ; A 1.9:30	1895
10	<input type="checkbox"/>	A 1.9:31 Alfalfa, or lucern / Jared G. Smith. Hampden Docs; A 1.9:31	1895
11	<input type="checkbox"/>	A 1.9:32/rev. Silos and silage / Charles S. Plumb. Hampden Docs, Internet ; A 1.9:32/rev.	1903
12	<input type="checkbox"/>	A 1.9:33 Peach growing for market / by Erwin F. Smith. Hampden Docs; A 1.9:33	1895

Department of Agriculture

- A 1.1: Report of the Secretary of
- A 1.1/3: Semiannual Report, Office
- A 1.1/4- 2: Annual Report on the F
- A 1.1/4- 3: Appraisal of the Propo
- and Congress
- A 1.1/5: Report on USDA Human M
- A 1.1/6: Office of Inspector Gener
- A 1.2: General Publications
- A 1.2/10: Priorities for Research, I
- A 1.2/11: Five-Year Plan for the F
- A 1.2/12: Accomplishments for Re
- A 1.2/13: Fiscal Year Priorities anc
- Education, A Report to the Secretary
- A 1.3: Department Bulletins. 1-1500. 1910-1929
- A 1.9: Farmers Bulletins 1889-
- A 1.10: Yearbook of Agriculture 1984-
- A 1.11: Regulations 1936-
- A 1.11/3: Handbooks, Manuals, Guides
- A 1.11/4: Audit Guide Series
- A 1.20: Department Circulars
- A 1.34: Statistical Bulletins 1923-
- A 1.34/3: World Indices of Agricultural and Food Production 1980-
- A 1.34/4: Food Consumption, Prices, and Expenditures

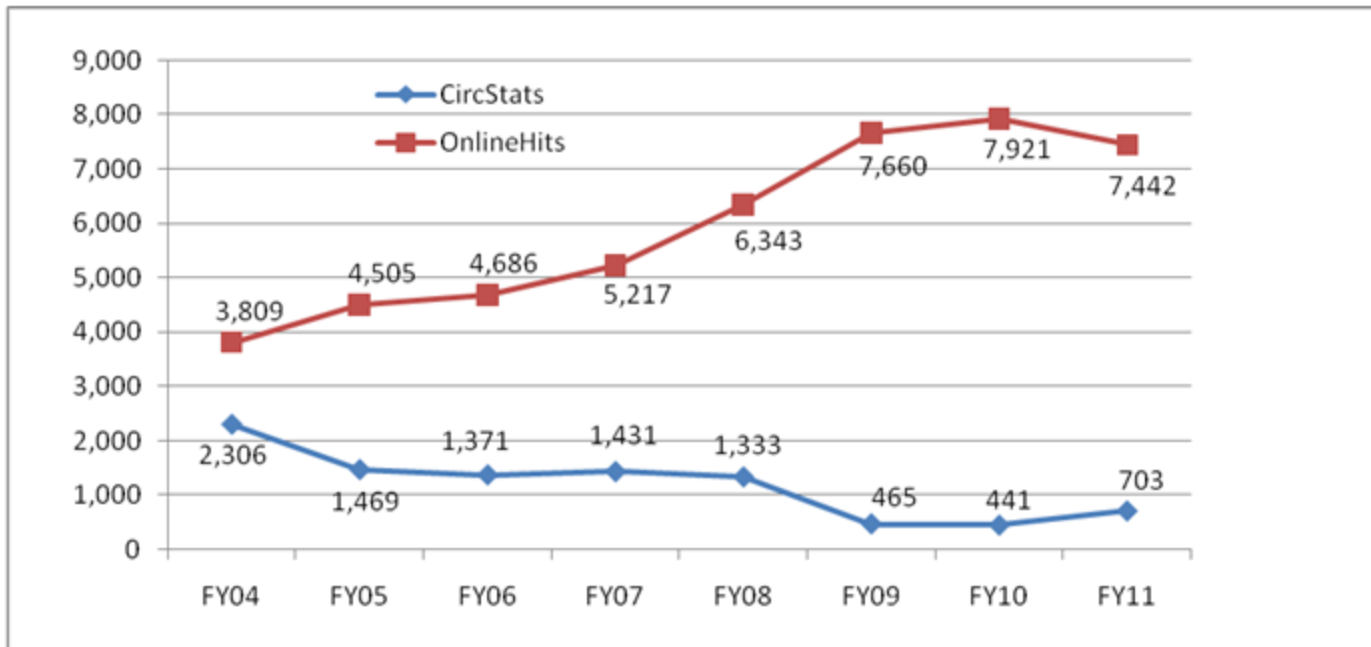
ACADEMIC COMMONS Penrose Library Building Project

Quick Search
Choose a resource...

Classic Catalog Searches Databases

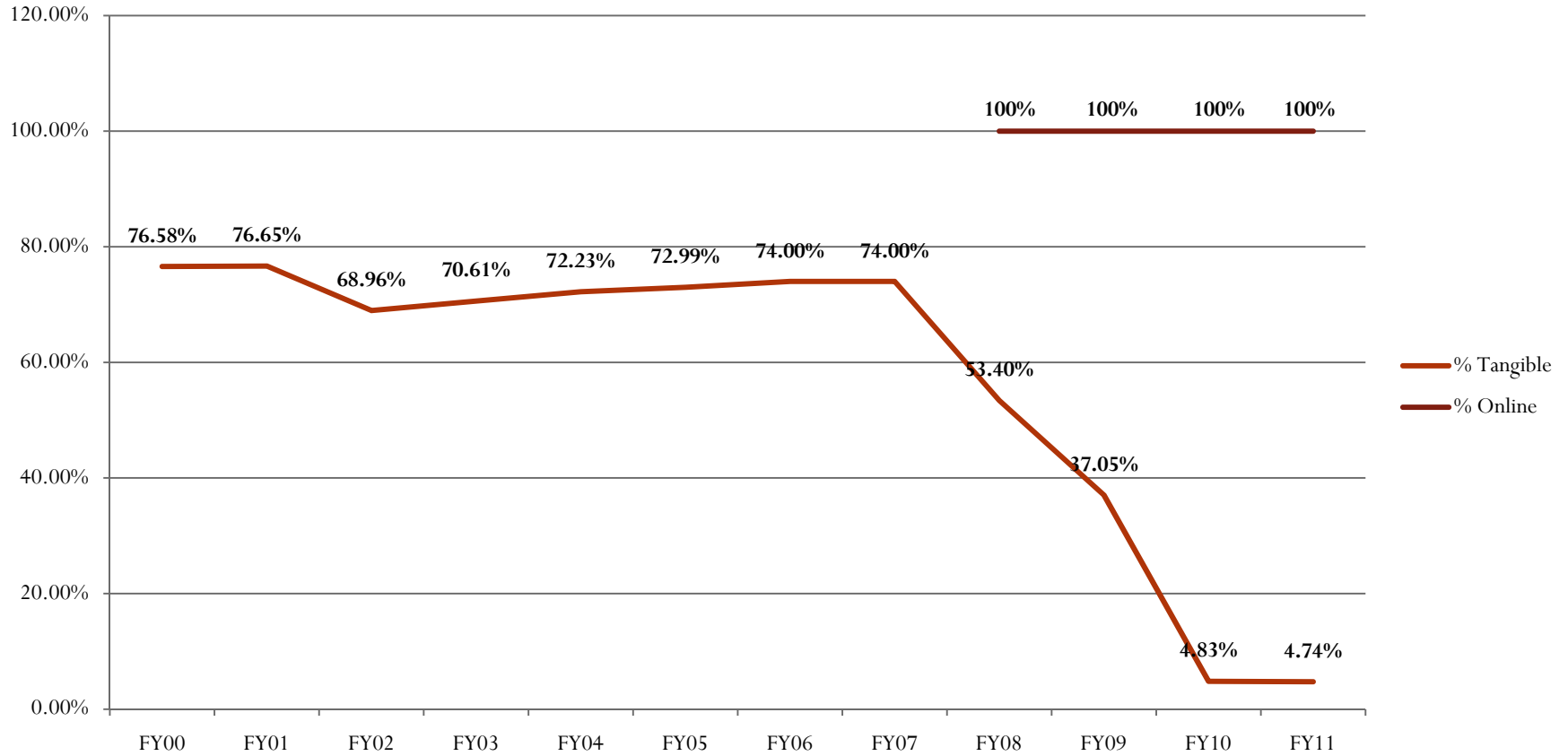
<http://library.du.edu/site/about/governmentDocuments/browse/browse.php>

Circ stats vs. online access



Physical Circulation of Docs Compared with Online Clickthroughs.

Item Selection Percentage over Time.



Which item numbers to keep?

Which item numbers to drop?

Item Selection Tool for Illinois Depository Libraries

Allows for comparison between 51 depository libraries. This information is current as of September 1, 2011.

Format for Tables:

Item No.	0140-ISL	0141-UIUC	0141A-OCC	0142-LU	0143-ISU	0144-CPL	0145-UC	0145A-UCL	0146-CSU	0146A-IIT	0147-MVCC	0147A-NWUL	0147B-SUICL	0148-SSC
----------	----------	-----------	-----------	---------	----------	----------	---------	-----------	----------	-----------	-----------	------------	-------------	----------

Item numbers execute searches in MOCAT

0000s (2.3MB)	0100s (2.64MB)	0200s (863K)	0300s (1.4MB)
0400s (3.01MB)	0500s (2.35MB)	0600s (1.53MB)	0700s (1.27MB)
0800s (1.13MB)	0900s (1.65MB)	1000s (1.39MB)	1100s (85K)

Covers:

0140	ISL	Illinois State Library (Regional)	99.93%
0141	UIUC	University of Illinois, Urbana-Champaign	98.41%
0141A	OCC	Oakton Community College	18.62%
0142	LU	Lewis University	29.23%
0143	ISU	Illinois State University	69.86%
0144	CPL	Chicago Public Library	98.67%
0145	UC	University of Chicago	81.71%
0145A	UCL	University of Chicago Law	15.35%

Item Selection Tool for Illinois Depository Libraries

<http://mysite.du.edu/~cbrown/illinois/>

Item Selection Tool for Missouri Selective Depository Libraries

<http://mysite.du.edu/~cbrown/missouri/>

Item Selection Tool for Colorado Selective Depository Libraries

<http://mysite.du.edu/~cbrown/gopig/>

Granularity of docs clickthroughs

Down to the agency level

FY2004-FY2010 Government URL Access Summary

7/17/2003 through 9/9/2009

	04	05	06	07	08	09	10
Totals	3809	4504	4686	5217	6342	7660	807

A		04	05	06	07	08	09	10	
	Totals	63	81	132	89	118	117	11	
A 001.001	15	20	33	19	25	28			Department of Agriculture (1862-)
A 013.001	9	8	21	13	23	39	4		Forest Service (1905-)
A 017.001	13	13	7	7	22	14	2		National Agricultural Library (1962-1978, 1981-)
A 029.001		1	1	1					Weather Bureau (1890-1940)
A 057.001	5	9	7	5	7	3			Natural Resources Conservation Service (1935-1942, 1945-)
A 067.001	2	6	1	5	6	1			Foreign Agriculture Service (1953-)
A 068.001		1							Rural Utilities Service (1994-)
A 077.001		3	3	2	1				Agricultural Research Service (1953-1978, 1981-)
A 077.501				1		1	2		Publications Relating to Horticulture (1953-)
A 077.701							1		Publications Relating to Home Economics and Human Nutrition (1953-)
A 082.001					1				Agricultural Stabilization and Conservation Service (1961-1994)
A 088.001	3	2	6	7	8	5	1		Agricultural Marketing Service (1972-)
A 092.001	1	8	24	3	4	1			National Agricultural Statistics Service (1986-)
A 093.001	13	7	21	23	20	15	3		Economic Research Service (1961-1978, 1981-)

C		04	05	06	07	08	09	10	
	Totals	227	166	176	274	271	258	58	
C 001.001	12	26	22	9	17	8	2		Department of Commerce (1913-)
C 001.102					1				Minority Business Development Agency (1979-)
C 001.202	2	7	2		2				Technology Administration
C 003.001	140	83	108	199	190	175	44		Bureau of the Census (1903-1972, 1975-)
C 013.001	7	8	8	15	19	25	3		National Institute of Standards and Technology (1934-)
C 021.001	2	5	4	5	1	1			Patent and Trademark Office (1975-)
C 022.001		1				1			Bureau of Mines (1925-1934)
C 046.001						1			Economic Development Administration (1965-)
C 051.001			1						National Technical Information Service (1970-)
C 055.001	12	9	3	4	10	9			National Oceanic and Atmospheric Administration (1970-)
C 055.101	1	4		3	1				National Weather Service (1970-)
C 055.201	8	4	8	4	14	3	6		National Environmental Satellite, Data, and Information Service (1970-)
C 055.301	2		3	5	4	1			National Marine Fisheries Service (1970-)
C 055.401	2	1		1		23			National Ocean Service (1970-)
C 059.001	10	6	7	8	5	4	1		Bureau of Economic Analysis (1975-)

Date Distance by Fiscal Year

Users somehow discover old content

	<i>FY04</i>	<i>FY05</i>	<i>FY06</i>	<i>FY07</i>	<i>FY08</i>	<i>FY09</i>	<i>FY10</i>	FY11
Total Clicks	3809	4504	4686	5217	6342	7660	7921	7442
Up to 10 years	3542	4155	4170	4369	4996	5600	5871	4944
<i>percent</i>	93.0%	92.3%	89.0%	83.7%	78.8%	73.1%	74.1%	66.4%
Over 10 years	267	349	516	848	1346	2060	2050	2498
<i>percent</i>	7.0%	7.7%	11.0%	16.3%	21.2%	26.9%	25.9%	33.6%

Circ vs. Access over Time

Each SuDocs stem has its own story

	Print Circ	Online Access	Reason
A - Agriculture	515	975	Unknown
E - Energy	99	3053	Added 43,735 OSTI records in 2009
GA - GAO	92	3892	Added 9,535 GAO URLs in 2008
HE - HHS	800	2319	Unknown
Y 1 - Congress	809	4109	Added 333,995 Readex Serial Set records in 2009
Y 4 - Cong Hearings	2201	9664	Added LN/ProQuest records in 2008

Takeways

Docs clickthrough data and item selection

- If you have docs records in your catalog, someone will discover them; Greater exposure leads to increased discovery
- If desired, clickthroughs can be linked to item numbers, enabling precise item selection
- Users often click on links from agencies I never would have selected. Clickthrough stats will defy the best librarian wisdom.
- As a result of our data, we decided to get every Internet record GPO produces to provide the greatest exposure Marcive's Documents without Shelves)
- Online access sometimes patterns with print circulation, sometimes not.
- User interests seem to defy our understanding. Because of this it is better to overselect than to underselect items.

Specs for getting clickthrough statistics at your library

Pass these specs along to a tech person and you can have clickthrough statistics.

- Project hosted on stable server (such as library Web server).
- Should be able to handle long URLs – up to 700 characters.
- Prepend URL sends request to library server.
- Included in prepended URL is cataloger-supplied 3-letter code of URL type (ex: gov, cou, ran – any 3-letter combination that may be needed in future).
- Server records date/time, IP address of requestor, 3-letter code of URL type, and URL requested.
- Server redirects user to desired URL.
- Reporting mechanism available to gather clickthroughs.
- Archiving function available to archive stats.
- Ability to view archived records.
- Secure login for authorized users.

Questions?

Christopher C. Brown

University of Denver, Penrose Library

cbrown@du.edu


Council Q&A

1. Outside of the OPAC, how do you identify and provide access to the online publications that are the most important for your library's users? Do you have data about how these access points are used?

2. What are the key data points that you think institutions should focus on, given limitations of time and staff? Besides usage statistics, what factors do you take into consideration when managing a collection of online-only publications?

3. Some libraries provide access to government information resources through commercial and non-profit products alongside traditional FDLP channels. Often, library users have access to the same information in an online format from several providers. What impact do you see, if any, of the increase in content access redundancy?


4. How might planning be affected by the increasing development of web-scale discovery services (for example, SerialsSolutions's Summon product) that could potentially diminish the role of library OPACs?



Electronic Government Publications

Handout: How our statistics program works

Susan Kendall
San Jose State University
October 18, 2011



KING LIBRARY

How we derived our e-govpub statistics

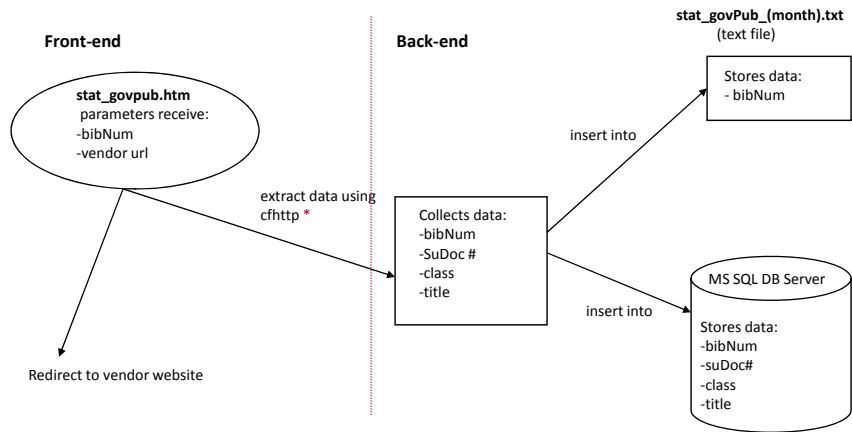


- A quick review on SJSU's statistics program for e-govpubs
- We developed an in-house program
- We currently do not use Google Analytics for this project
- We do use Google Analytics for web site analysis

Government Publications Architecture

Client

Programming languages: COLDFUSION, HTML, CSS Database:
Microsoft SQL Database (MS SQL DB)



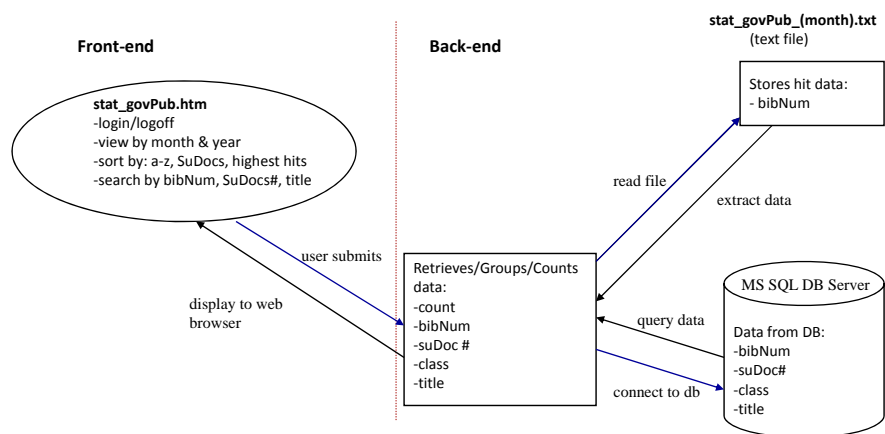
* Extract data using cfhttp to initiate a one-way request from information from a remote server (the library catalog)
<http://mill1.sjlibrary.org/search/.bibNum/.bibNum/1,1,1,B/marc~bibNum>

Lyna Nguyen

Government Publications Architecture

Admin.

Programming languages: COLDFUSION, HTML, CSS
Database: Microsoft SQL Database (MS SQL DB)



Lyna Nguyen

Steps to Modifying the Bibliographic Record

● Identify the Bibliographic Record Number

● **TITLE: Earthquakes in Arkansas and vicinity 1699-2010**

● **B4153005** – Bibliographic Record Number

Catalog view

RECORD NO View Entire Collection

Limit to Available

[more info](#)

Author [Dart, R. L. \(Richard L.\)](#)
Title **Earthquakes in Arkansas and vicinity 1699-2010 [electronic resource] / compiled by Richard L. Dart and Scott M. Ausbrooks ; prepared in cooperation with the Arkansas Geological Survey.**
Publication Information [Reston, Va.] : U.S. Geological Survey ; Denver, Colo. : Denver Publishing Service, 2011.

[Permanent Link for this Title](#)

Online access and related links:

Connect to http://library.sjsu.edu/sjsu/stat_govpub.htm?id=41530056&path=http://purl.fdlp.gov/GPO/gpo9859

Then add the bibliographic record number to the **prefix**

- ✓ The prefix is: http://univ-intranet.sjlibrary.org/scripts/database_statistics/stat_govpub.htm?id=4153005



Identify the URL in the record

856 field will have the URL address:

<http://purl.fdlp.gov/GPO/gpo9859|xJSU>

Then add tracking information:

856 40

|uhttp://library.sjsu.edu/sjsu/stat_govpub.htm?id=41530056

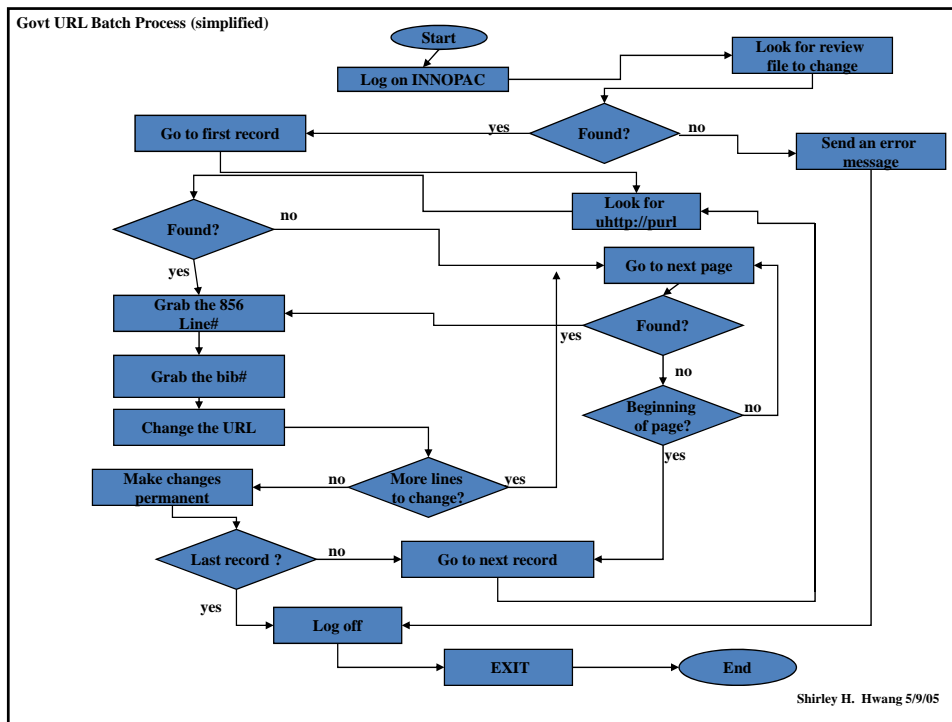
&path=<http://purl.fdlp.gov/GPO/gpo9859|xJSU>

How to Change the Database (using character based version)



Next step:

- Use a script/macro to copy the bibliographic record number for each record
- Add the prefix to the URL.
- Use a “do loop” in the script to perform batch changes
- Majority of records can be batch processed with the script/macro



Time required for initial run

- 37,000 bibliographic records / 50,000 – 856 fields
- Minimum of 2 weeks to run initial database change
- Many records had non standard URLs attached

On-going monthly maintenance

- Search for records to be changed after downloading monthly Marcive records
- Use script to do an automatic search
- Scan the records to check URLs
- Run a script/macro to batch change the records

On-going monthly maintenance and time consideration

- Total staff time: approximately 30 to 60 minutes
- Total Machine time: approximately 2 to 4 hours