

---

---

# Art & Maps in the Serial Set

DIANE H. SMITH & ANDREA SEVETSON

---

---

# Agenda

- Why did we start this research?
- Art in the Serial Set
- Maps in the Serial Set

Why did we start this research?

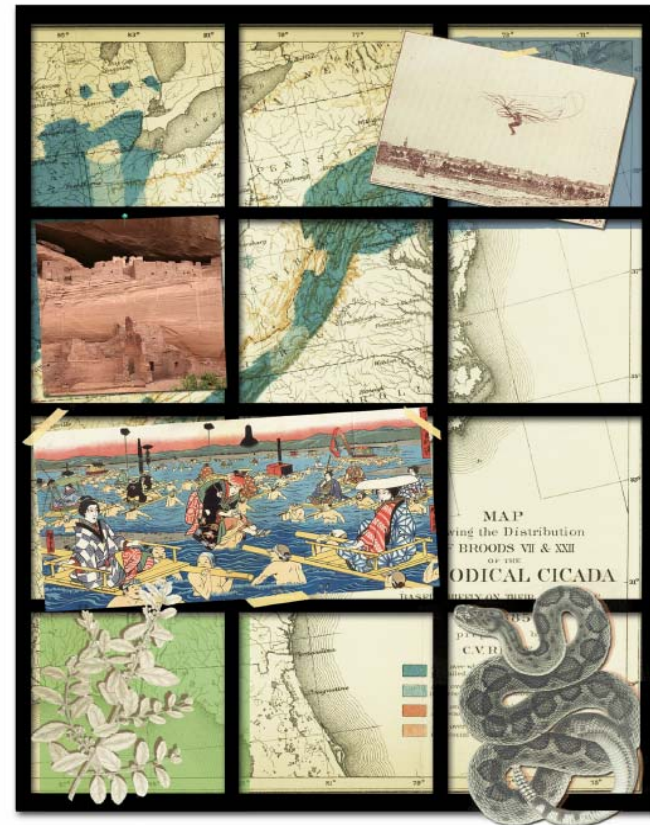
It's all about a book...

[tinyurl.com/serialsetbook](http://tinyurl.com/serialsetbook)

## The Serial Set

*Its Make-up and Content*

Edited by Andrea Severson



## Contents

- The Serial Set: The Big Picture
- Survey of Maps
- Art
- Agriculture
- American Labor, Banking Upheavals and the Creation of Money and the Fed
- The Bureau of American Ethnology and the Serial Set
- Civil War and Reconstruction
- Constitutional amendments
- Western American Exploration
- The Survey of the Coast
- The United States 1789–Present: Its Changing Place in the World
- Science and Technology ...through 1920
- Strange bedfellows: Radical groups and other organizations
- Social Justice Issues
- Controversies and Scandals
- The Wild and Wacky World ...

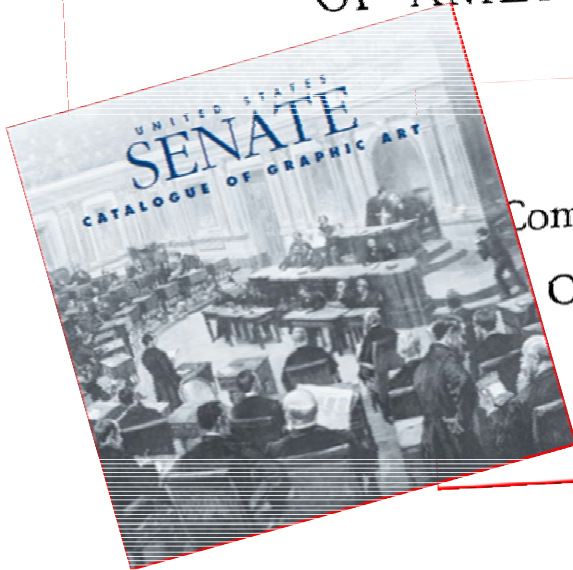
# Art in the Serial Set



69TH CONGRESS, 1ST SESSION  
SENATE DOCUMENT NUMBER 95

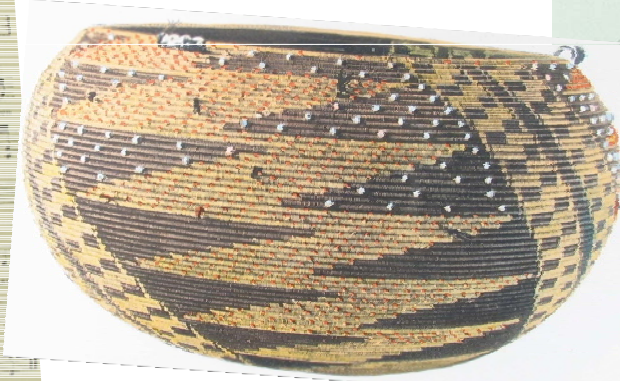
# ART AND ARTISTS OF THE CAPITOL OF THE UNITED STATES OF AMERICA

UNITED STATES  
**SENATE**  
CATALOGUE OF ART



Compilation of Works of Art and Other  
Objects in the United States Capitol

**ART**  
—  
IN THE  
—  
UNITED  
STATES  
CAPITOL







## Focused on Serial Set beyond the Capital collections

- 320,000+ illustrations based on the ProQuest count
- Primary agencies:
  - Patent
  - War
  - Interior
  - Agriculture
  - Smithsonian,
  - Bureau of Ethnology
  - Census
  - Pan American Union

## Process

- Interest dates back to early career
- Covered all illustrations in the volumes, outside of maps
- Art covers architecture, paintings, sculpture, music, pottery, textiles, photography—all in the Serial Set
- Objective: to find recognized artists, if at all possible
  - John James Audubon
  - George Caitlin
  - Julian Scott
  - Thomas Moran
  - James M. Whistler
  - Robert Ridgway
  - Louis Fuertes
  - Spencer Fullerton Baird
  - C. B. Graham
  - Charles Koppel

# Botanical Art

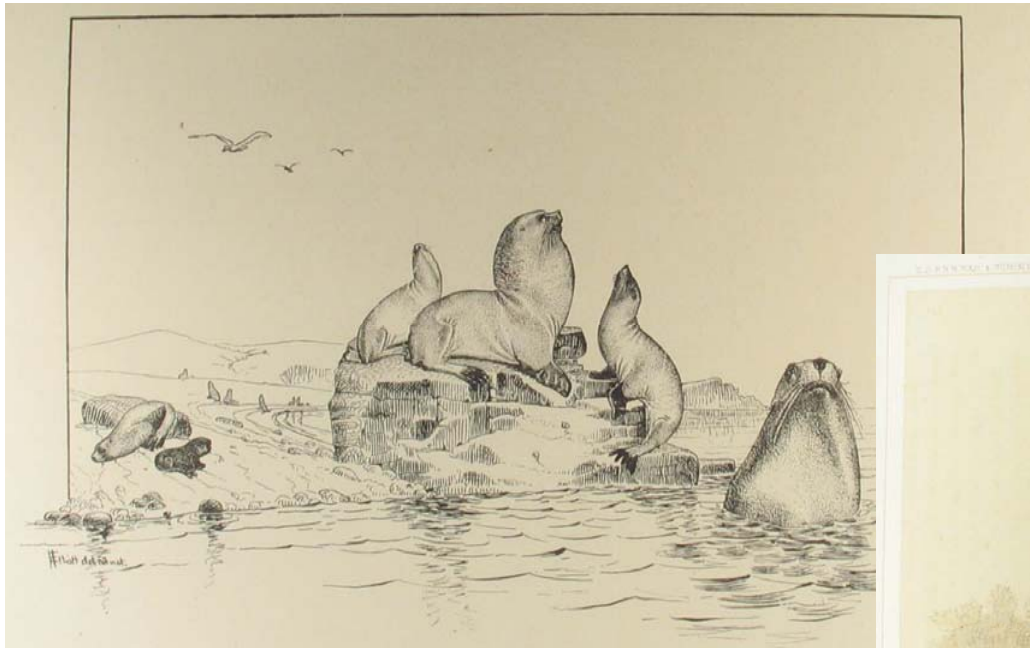






# Natural Resources











Pl. XVIII



N 3

Pl. II.



*White-headed Sea Eagle, or Bald Eagle?*

Drawn from Nature by G. S. Edwards. 1822.

Engraved by J. E. B. Smith.

# Explorations into Foreign Lands



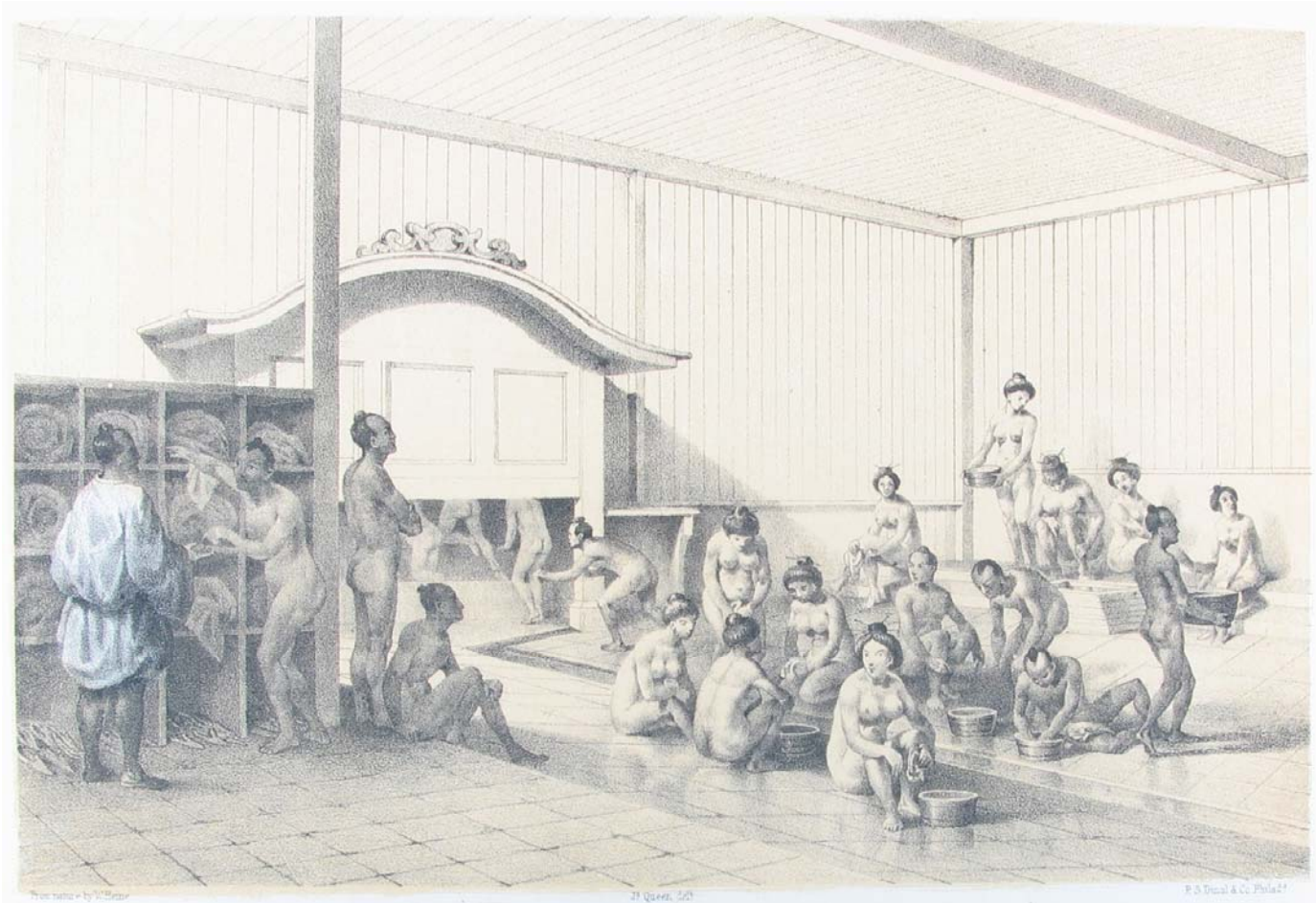
Senate Ex doc N° 36 2<sup>d</sup> Sess. 32<sup>d</sup> Cong. part II.



Sketched by I. Gibbon

Lith. of P. S. Duval & Co Philad.<sup>a</sup>

LLAMAS TRAVERSING THE ANDES LADEN WITH SILVER.

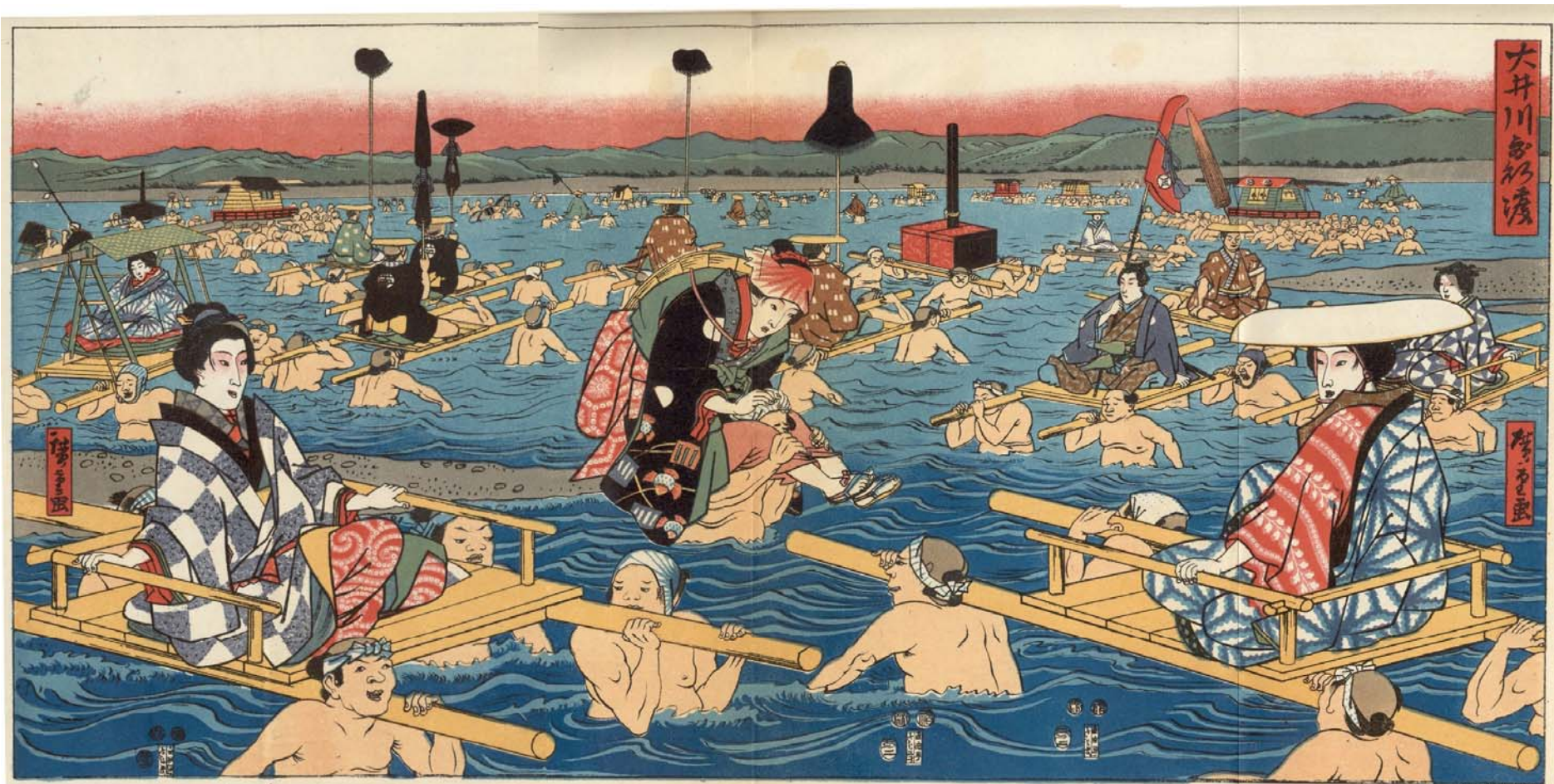


From a drawing by G. S. Smith

21 Queen, 502

F. & D. Neal & Co. Philad.

PUBLIC BATH AT SIMODA.



CROSSING THE OHO-E-GA-WA  
[Province Suruga]

L. BECKMAN'S SON, FRANKFURT

# Native Americans











UTAH INDIAN PRISONERS UNDER THE COMMON PLATFORM IN FORT UTAH







Mary Wright Gill 1900









# The Continent





CROSSING OF THE PLATTE MOUTH OF DEER CREEK.

Ackermann's Lith. and Engraving Works



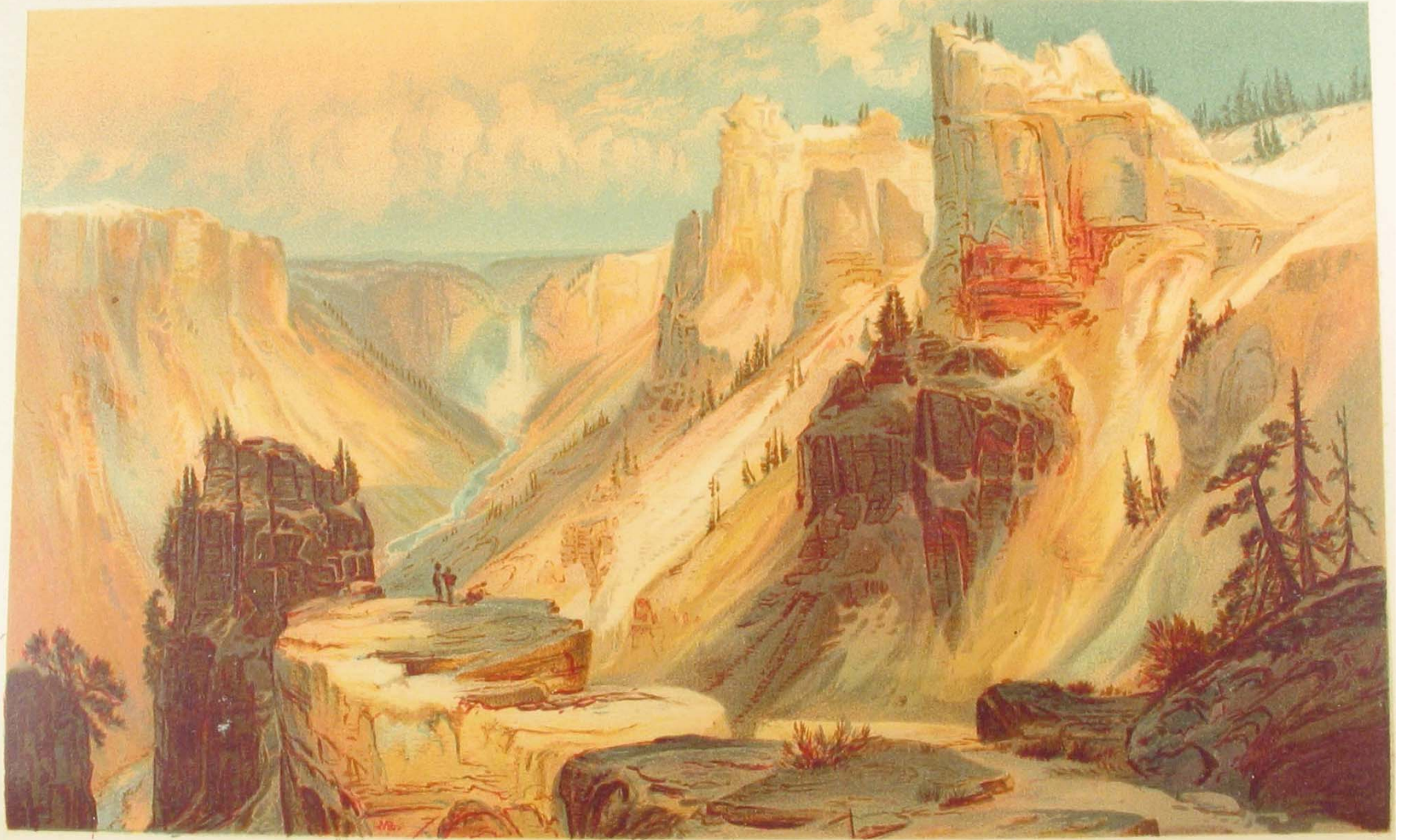
Ackerman Lith. 379 Broadway, N.Y.





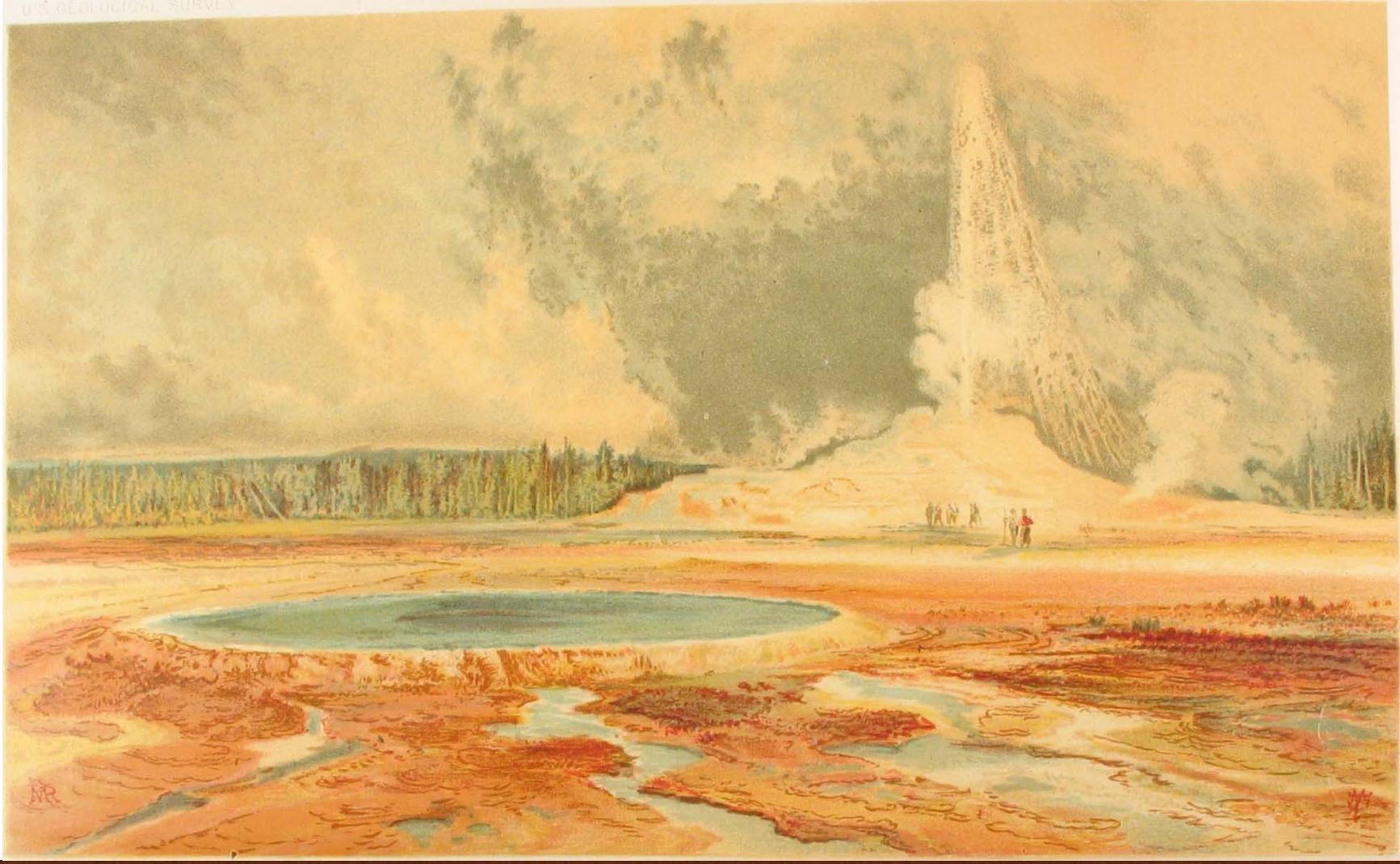








U.S. GEOLOGICAL SURVEY





# Survey of Maps in the Serial Set



## Statistics

- 55,000+ map titles
- More than 70,000 individual map sheets
- 3000 map titles prior to 1871
- Most maps included in the years 1871-1930, with more than 23,000 map titles.
- Pre 1821 and post 1971 there are fewer than 100 map titles per *decade*.

*My Question: What can I tell the reader about best ways to locate the maps?*

- Look at the material containing maps and see if there are any overarching themes
- Check subject area of the maps/reports (including annual reports of agencies) and see if there is any “road map” to what was done
- Which are the most important or helpful maps on the subject?
- Are all the maps on a topic in one volume or series?

## *Survey of Maps* chapter outline

- **Exploration and westward expansion**
- **Navigation, Navigational Improvement, and Flood Maps**
- **Maps of War**
- **Weather Maps**
- **Disease Maps**
- **The Natural Resources of the U.S. & Economic and Social Development**
- **Land Maps, including Land Use and Rights**
- **Boundary Disputes**
- **Miscellaneous Maps**

## Exploration and westward expansion

- Routes of explorers
- Charles Preuss
- Gouverneur Kemble Warren
- Coastal Survey

Included twice.

- 7502  
H.doc.1728
- 9139  
H.doc.113



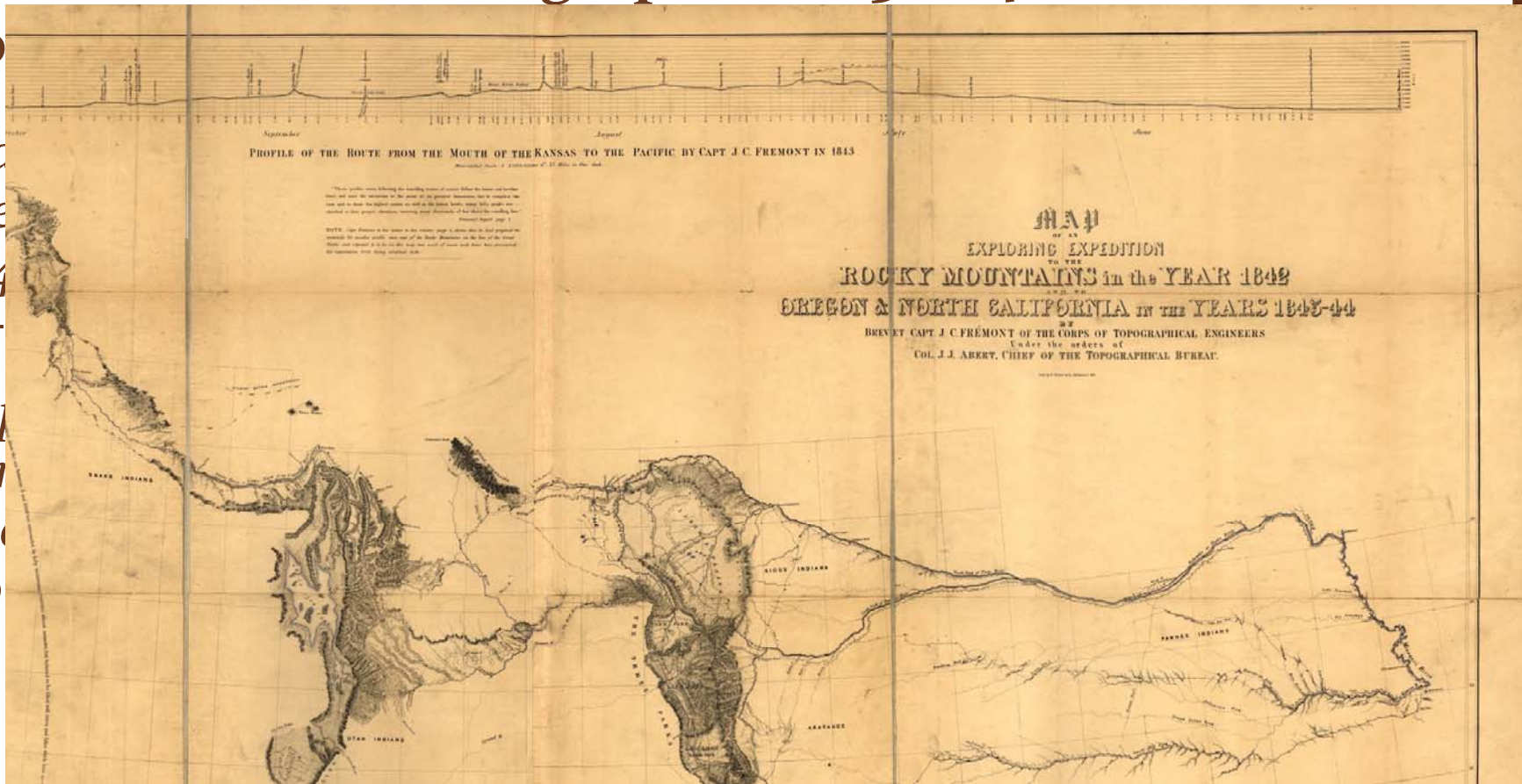


# Charles Preuss – cartographer on 3 of 4 Frémont

exp

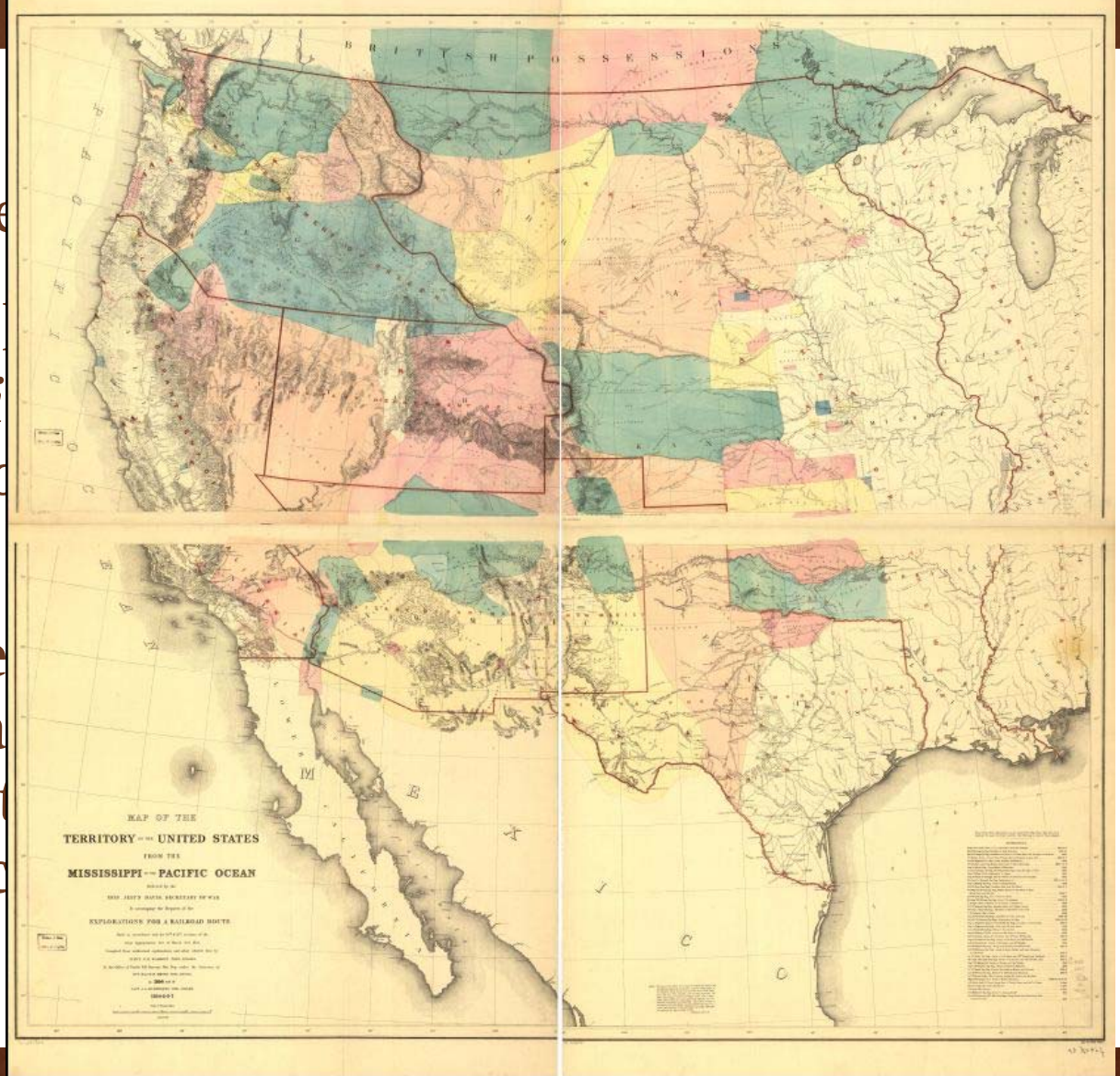
- Mo  
the  
184  
28-

- Top  
con  
and  
Co



Gouverneur Kemble  
Warren's task, for the  
*surveys, to ascertain  
economical route from  
River to the Pacific*

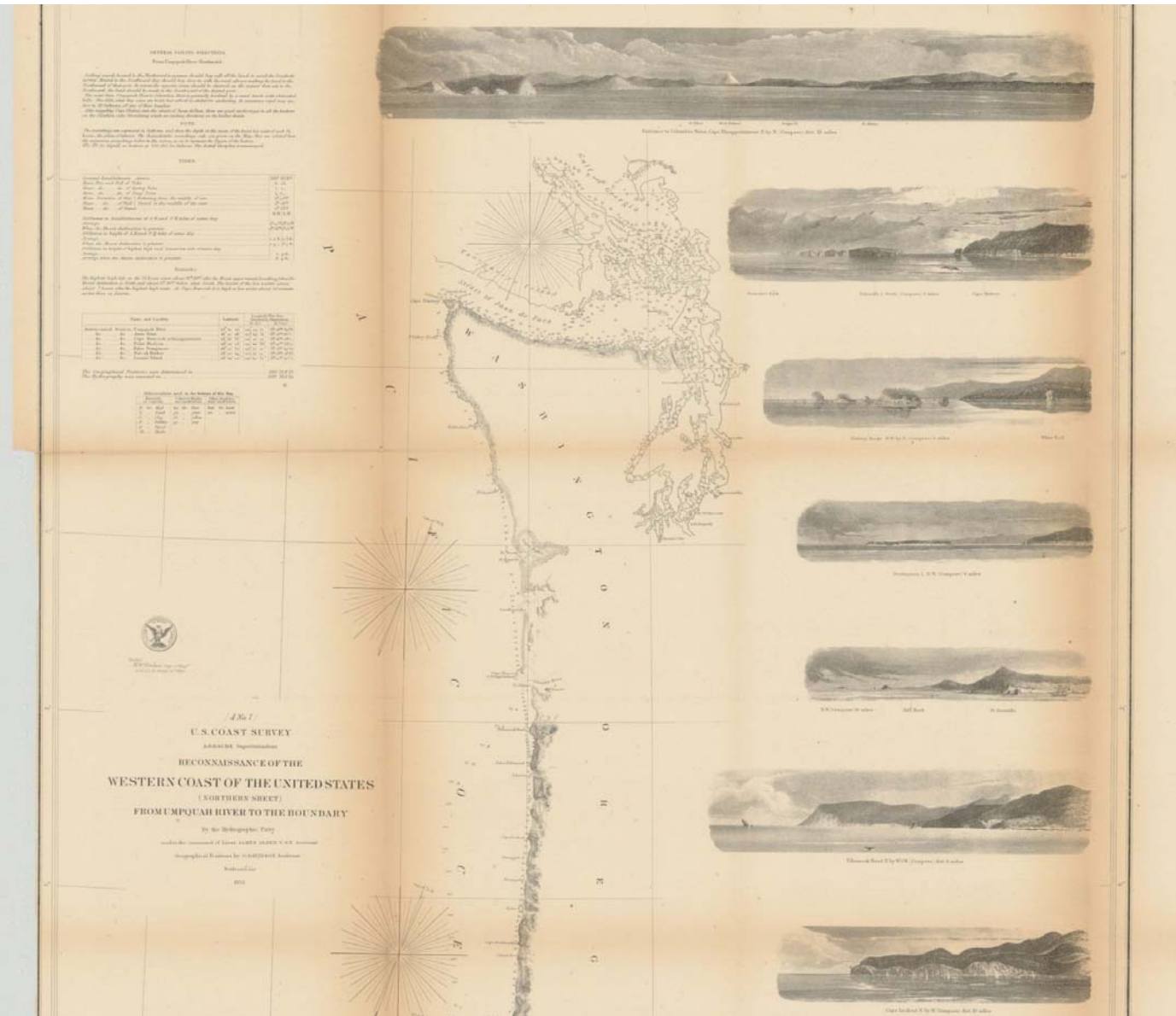
“carefully read every  
of survey, reconnaissance  
obtained, to ascertain  
embody authentic



# Coastal Survey Maps

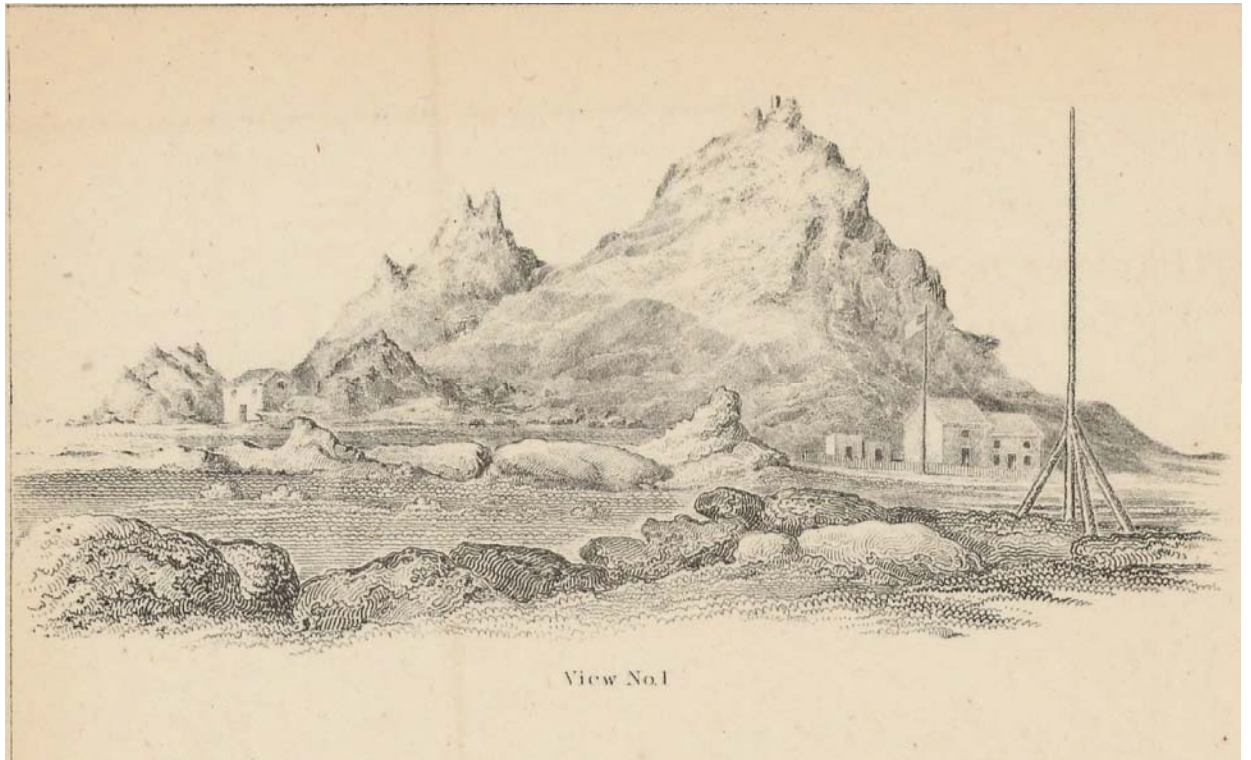
## *Reconnaissance of the Western Coast of the United States from Umpquah River to the Boundary*

826 S.exdoc.22



## A few other maps of exploration

South Farallon Island  
(detail)  
826 S.exdoc.22



## Navigation, Navigational Improvement, and Flood Maps

Big plans!

- 1808 – Secretary Gallatin
- 1937 – President FD Roosevelt and the *National Resources Committee*

## Navigation, Navigational Improvement, and Flood Maps

April 6, 1808: Treasury Secretary Albert Gallatin, submitted report *Roads and Canals* to the Senate (ASPO37 Misc.250, 10-1)

“emphasized the importance of long range planning for resources and public services such as water and transportation. He saw the multipurpose value of the water resource, as well as the possibilities of an integration of transport modes such as roads and canals. He prepared a long list of road and canal projects to help link New England with the South and the seaboard states with the interior of the young nation. Gallatin's report stated clearly the federal interest in water resources .... The projects he proposed were, for the most part, carried out over the following 150 years.”

# Navigation, Navigational Improvement, and Flood Maps

*1937: Public works planning message from the President of the United States transmitting a proposed plan of a six-year program submitted by the National Resources Committee based on selection and priority of public works projects.*

10115 H.doc.140

The report of the National Resources Committee on public works planning which I submit today should, of course, be read in conjunction with the recommendations for highways, bridges, dams, flood control, and so forth, already under construction, estimates for which have been submitted in the Budget, and also should be read in conjunction with other special reports, such as the report of the Great Plains Committee which I expect to submit to the Congress in a few days.

The National Resources Committee submits a 6-year program, based on selection and priority of public works. The period of 6 years is arbitrarily chosen and can, of course, be made to fit into annual future appropriations made by the Congress.

The report also contains recommendations on the timing of public works and division of costs in their relation to the necessary organization of future continued planning. I have already referred to this in my message relating to the reorganization of the Executive branch of the Government.

As an example of the kind of reservoir of projects constituting the 6-year program, a drainage basin study is included in the report. This summary list of projects involving the uses of water is not to be regarded as fixed or final, as the report itself notes, but rather indicates a great forward step in the development of the planning process, considering not one project alone but the relationships between a great group of projects dealing with water use and control.

Through the formulation and annual revision of a program of all types of construction, revision and adoption of the program by Congress and appropriations under regular budgetary procedure timed in part in relation to economic needs we can provide for the orderly development of our resources and the provision of needed facilities for our people.

FRANKLIN D. ROOSEVELT.

The WHITE HOUSE,  
February 3, 1937.

## **Maps of War**

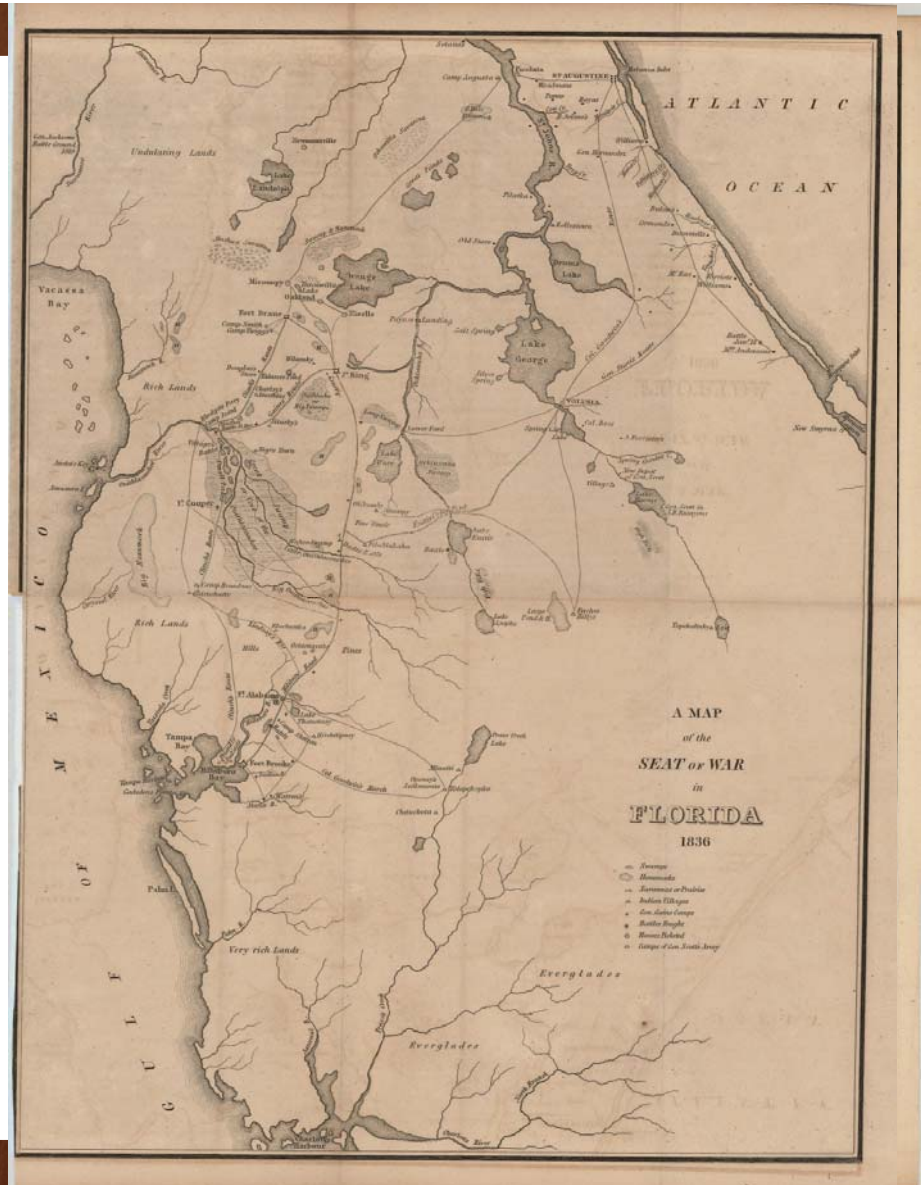
- **Second Seminole War**
- **Mexican War**
- **Crimean War**
- **Civil War**
- **Spanish-American War**



# Second Seminole War

2 maps, printed 3 times...

- 299 S.doc.224
- 323 H.doc.78
- ASPo22 Mil.aff.738



# Mexican War

Sketch of the Battle of  
Sacramento, Feb. 28th 1847  
(detail)

503 S.exdoc.1/4



## Mexican War – interesting tidbit

Several maps of the Mexican War were included in the *Notes of a military reconnaissance (sic), from Fort Leavenworth, in Missouri, to San Diego, in California, including part of the Arkansas, Del Norte, and Gila Rivers* (517 H.ex.doc.41, 30-1), the W.H. Emory expedition to California and New Mexico

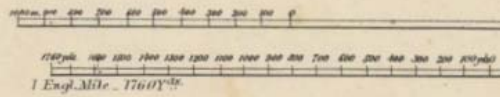
## Crimean War

Major Richard Delafield was sent to Europe to obtain “information with regard to the military service in general, and especially the practical working of the changes which have been introduced of late years into the military systems of the principal nations of Europe” (1036 S.ex.doc.59).

His 287-page report, *Report on the art of war in Europe in 1854, 1855, and 1856, by Major Richard Delafield, corps of engineers, from his notes and observations made as a member of a "Military Commission to the Theater of War in Europe," under the orders of the Hon. Jefferson Davis, Secretary of War.* (20 maps included of Crimean War and more)

# Fortifications

the Enceinte and detached Forts, &c.  
from a Survey published



Prepared under the Direction of  
to accompany his Report  
To  
the Hon. J. J. Phelps

West Point, N.Y., June 3<sup>d</sup> 1857



Conventional Signs  
showing the Position of the  
Troops in June 1855.

	French
	English
	Turkish
	Piedmontese

Note. the indicated positions on the Fedoukhine  
the same Aug 16<sup>th</sup> 1855, the day of the Battle.

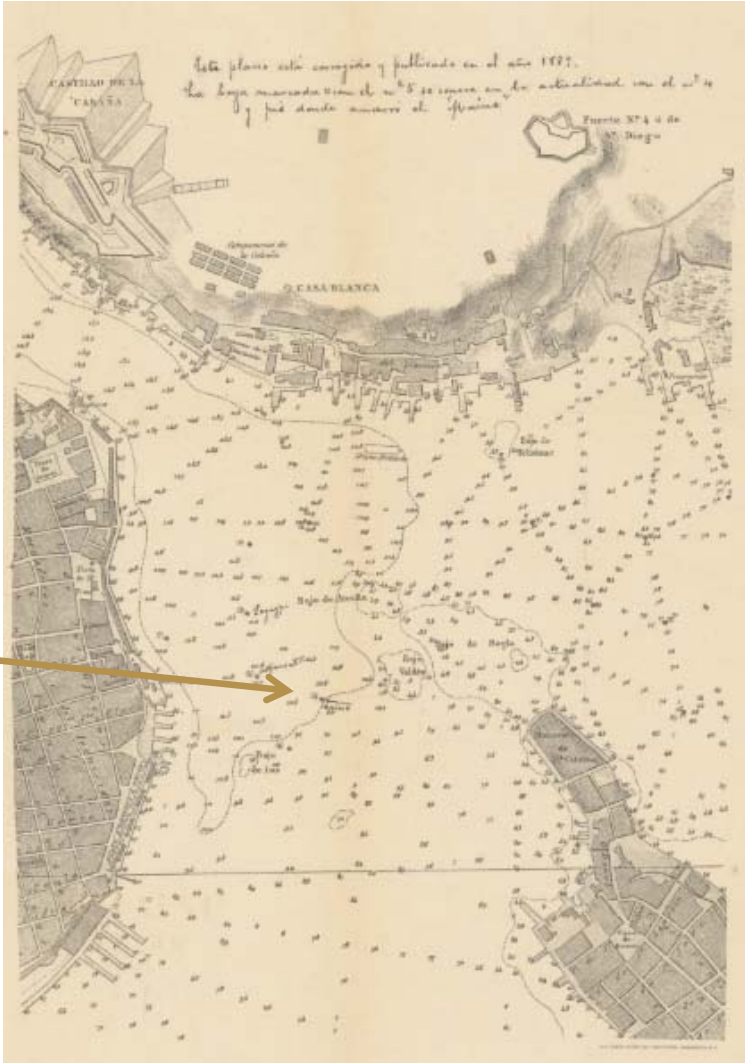
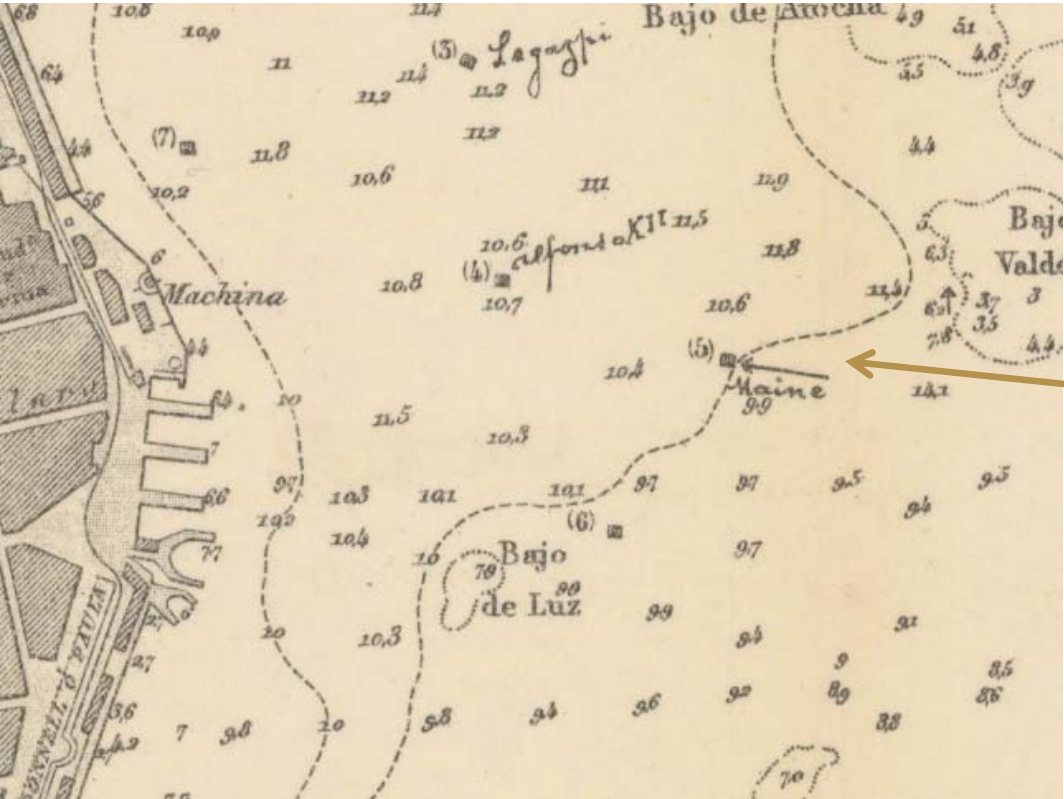


## Civil War

Most maps in the are in:

- *War of the Rebellion Records* and the Atlas (2998-1 and 2998-2)
- Annual Reports of Secretary of War and Secretary of the Navy
- Atlas from the Chickamauga and Chattanooga National Park Commission (4175 H.doc.514).
- Second Battle of Bull Run maps included in the 1879 commission to investigate Fitz-John Porter's 1862 court martial. (1163 H.ex.doc.71)

# Spanish-American War



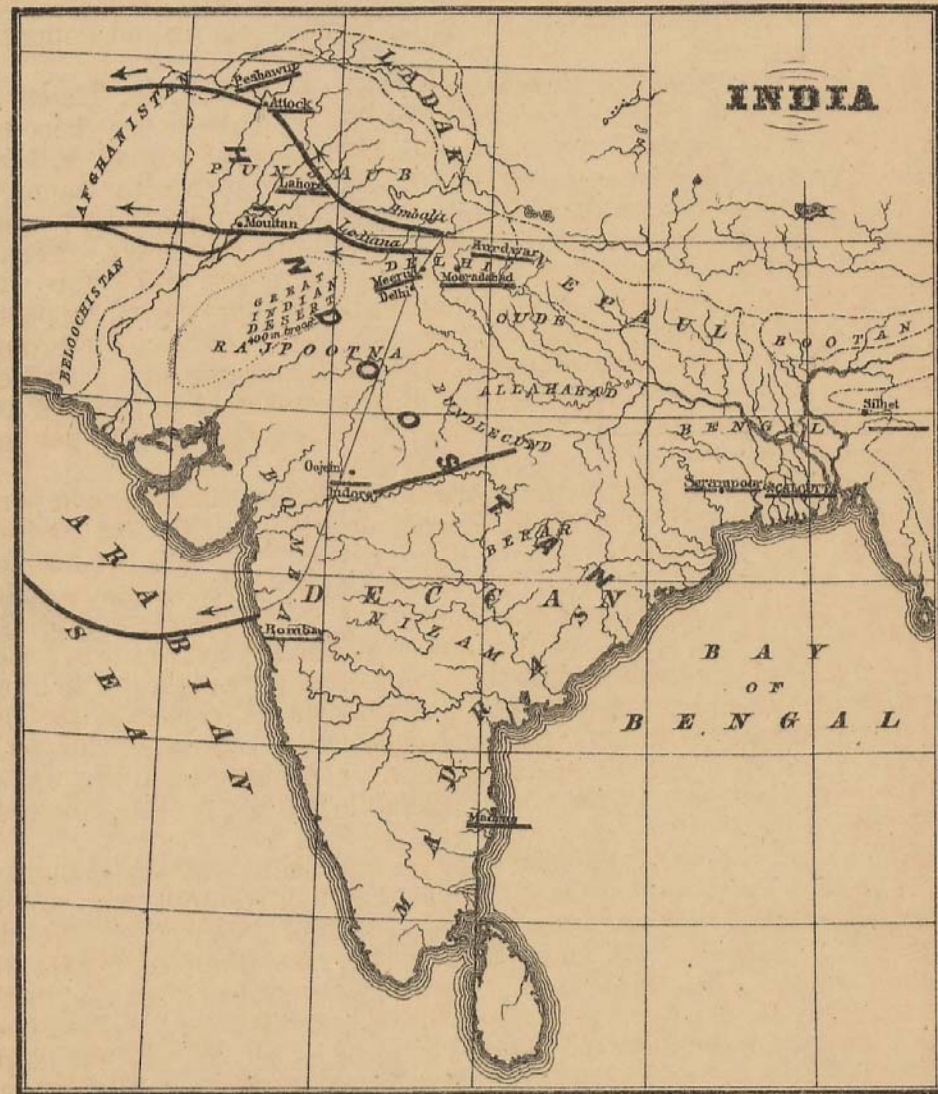


## Disease Maps

Maps showing measles, typhoid, malaria, cholera, anthrax, brucellosis, cattle and sheep scabies, phylloxera, dutch elm... (oh my). Covers both US and other countries.

India  
[Showing  
Routes of  
Diffusion of  
Cholera in the  
1860's.]

1646 H.exdoc 95



From: *The cholera epidemic of 1873 in the United States.*  
1646 H.exdoc.95

