

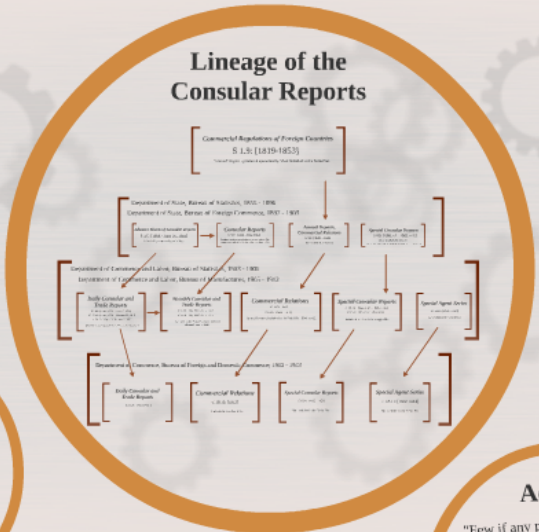
Off the Beaten Path

The Allure of the Consular Reports

"The great value of the Consular Reports to the many readers of the South Sea Islands is that they contain the latest intelligence, in a rapid and concise form, in our possession at any time."



Consular Officers Should Report
 "...matters of current interest of a commercial or industrial character...cover as wide a field as possible in the contemporaneous movements of trade, finance, industrial development, and invention."
 - 1896 Consular Regulations



Thank You! Questions?

Rebecca C. Hyde
 Saint Louis University
 rebecca.hyde@slu.edu
 Phone: 636.321.4244

Access
 "Few if any public documents of the United States have been more highly regarded in public libraries or more extensively used than the monthly series of the Consular reports..."
 - Monthly Catalogue, July 1910

"Intercourse with Weak People"
 From "Laker to Langer" 1885

Original Copies at
 and Free Digitization
 U.S. Social Sci.
 Institution
 Open Access

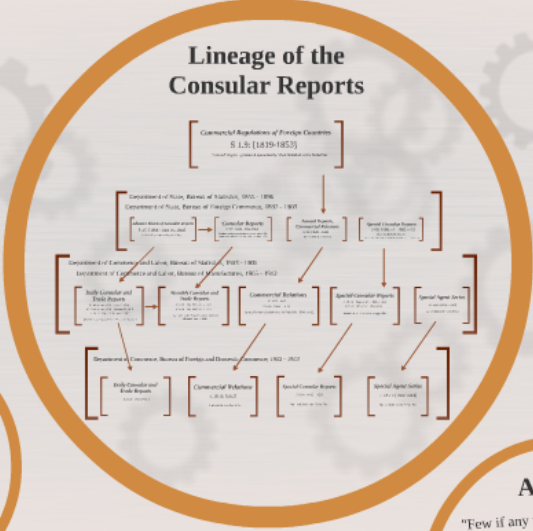


Off the Beaten Path

The Allure of the Consular Reports



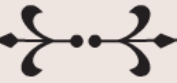
Consular Officers Should Report
 "...matters of current interest of a commercial or industrial character...cover as wide a field as possible in the contemporaneous movements of trade, finance, industrial development, and invention."
 - 1896 Consular Regulations



Thank You! Questions?

Rebecca C. Hyde
 Saint Louis University
 rhyde@slu.edu
 Phone: 636.320.6764

Access
 "Few if any public documents of the United States have been more highly regarded in public libraries or more extensively used than the monthly series of the Consular reports..."
 - Monthly Catalogue, July 1910



"The representatives of the Bureau penetrate to the remote regions of the earth that the exporters of the United States may proceed intelligently, on a basis of definite facts, to the conquest of new fields."

- 1916 *Report of the Secretary of Commerce*, on the functions of the Bureau of Foreign and Domestic Commerce





1900

Trinidad Formosa
Netherlands China Italy Chile
Peru Mexico Sierra Leone
Haiti Argetine Republic India Madagascar Greece
South Africa Switzerland Ceylon Egypt
Australia Guatemala Denmark
Sweden Paraguay Ecuador Congo
Germany Honduras Austria-Hungary
British Guiana Venezuela France Japan
Belgium Brazil Cuba
Morocco Uruguay Syria Canada Great Britain
Russia Siam East Africa Algeria
Spain Turkey

Consular Officers Should Report

"...matters of current interest of a commercial or industrial character...cover as wide a field as possible in the contemporaneous movements of trade, finance, industrial development, and invention."

- 1896 Consular Regulations

In the Consular Reports

- Details of industrial process
- Transportation & communication improvements (train, telegraph, etc.)
- Opportunities for market expansion
- Local prices and living conditions (sanitation, refrigeration, wages, insurance, etc.)
- Relevant newspaper clippings
- Use of American goods
- Education, especially vocational and industrial
- Americans abroad & so much more!

In the Consular Reports

- Details of industrial process
- Transportation & communication improvements (train, telegraph, etc.)
- Opportunities for market expansion
- Local prices and living conditions (sanitation, refrigeration, wages, insurance, etc.)
- Relevant newspaper clippings
- Use of American goods
- Education, especially vocational and industrial
- Americans abroad & so much more!

"Interviews with Work People"

HOW A BIRMINGHAM BAKER LIVES.

A baker said :

I work from 3 o'clock in the morning until 2 in the afternoon, six days a week. I get 17 shillings a week and my meals. Fifteen shillings a week with meals is what I used to get, and 30 shillings a week with meals is the top wages for a baker. Confectioners can get about 3 pounds (\$14.58) per week. I live in the master's house.

From "Labor in Europe" 1885

From "Special Consular Reports" no. 72, 1915

MESH UNDERWEAR.

AN IDEAL CLOTHING FOR INDIA

"Cool as a Cucumber."

We have after exhaustive tests found a garment which meets with absolute approval from all our customers who wear light weight cotton underwear.

IT IS MADE IN AMERICA in one of the largest factories in the States and who produce only this one garment and as a result have brought their costs of making it down to the finest margin.

IMMENSE INDENTS are placed for all our branches in the East and we are confident we offer value unequalled by any other firm.

IT IS

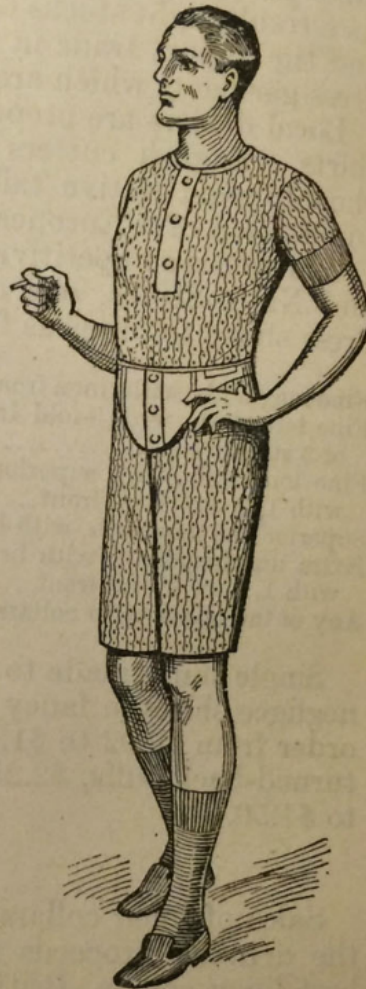
Light in weight. As soft as silk.

It wears like linen. Washes beautifully.

'Your Hot Weather Garment'
Vests or Knicker Drawers.

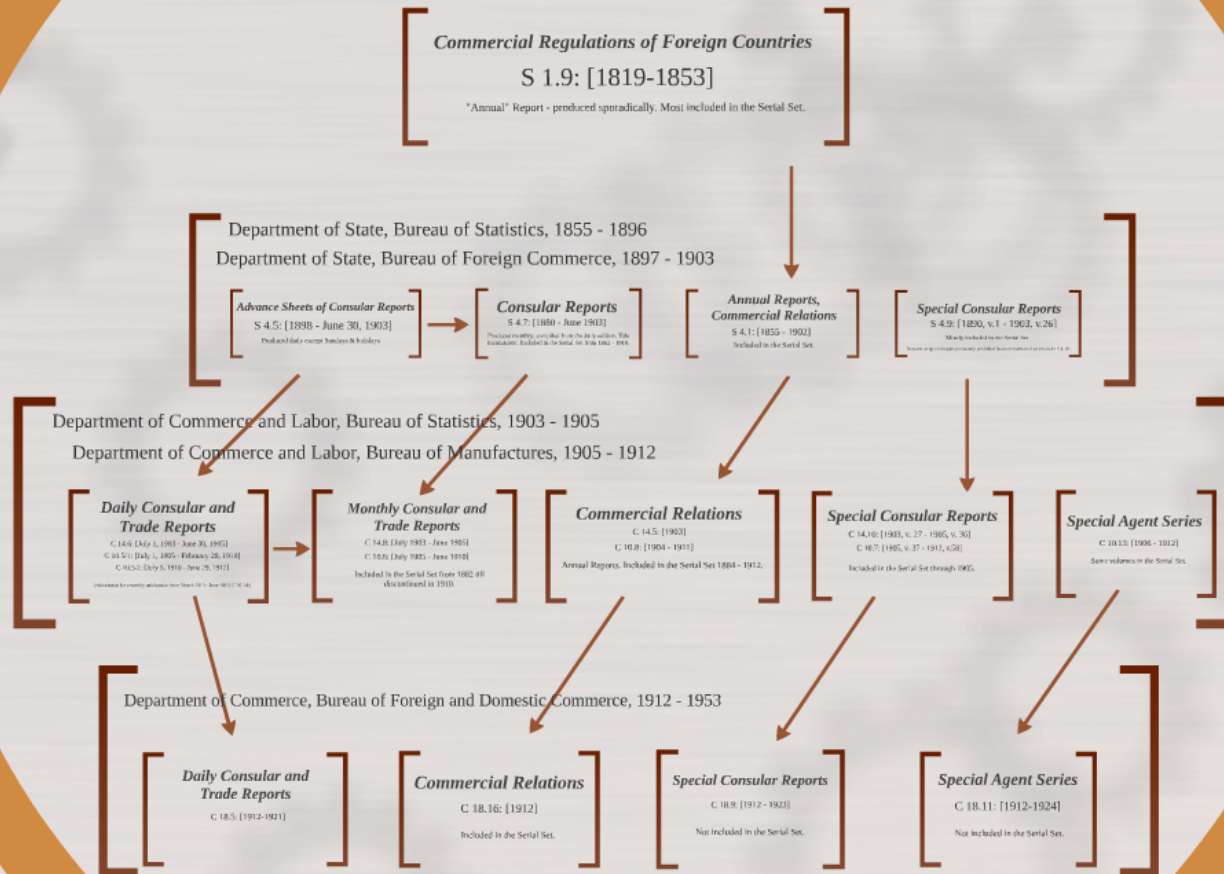
Re. 1 each. Re. 1 each.

3 for Rs. 2-15. 3 for Rs. 2-15.



Call and see these in our Men's Wear Section.

Lineage of the Consular Reports



ould Report

est of a commercial
ver as wide a field
ntemporaneous
nance, industrial
invention."
regulations

Access

"Few if any public documents
States have been more

Unusual Report

Commercial Regulations of Foreign Countries

S 1.9: [1819-1853]

"Annual" Report - produced sporadically. Most included in the Serial Set.

Bureau of Statistics, 1855 - 1896

Commercial Regulations of Foreign Countries

S 1.9: [1819-1853]

"Annual" Report - produced sporadically. Most included in the Serial Set.

Department of State, Bureau of Statistics, 1855 - 1896
Department of State, Bureau of Foreign Commerce, 1897 - 1903

Advance Sheets of Consular Reports

S 4.5: [1898 - June 30, 1903]

Produced daily except Sundays & holidays

Consular Reports

S 4.7: [1880 - June 1903]

Produced monthly; compiled from the daily edition. Title inconsistent. Included in the Serial Set from 1882 - 1910.

**Annual Reports,
Commercial Relations**

S 4.1: [1855 - 1902]

Included in the Serial Set.

Special Consular Reports

S 4.9: [1890, v.1 - 1903, v.26]

Mostly included in the Serial Set

Reports on special topics previously published in an un-numbered series under S 4.10:

Commerce and Labor, Bureau of Statistics, 1903 - 1905

Commerce and Labor, Bureau of Manufactures, 1905 - 1912

**Annual and
Special Reports**

[1898 - June 30, 1905]
[1905 - February 28, 1910]
[1910 - June 29, 1912]

(continued from March 1910 - June 1910, C 10.14.)

**Monthly Consular and
Trade Reports**

C 14.8: [July 1903 - June 1905]
C 10.6: [July 1905 - June 1910]

Included in the Serial Set from 1882 till discontinued in 1910.

Commercial Relations

C 14.5: [1903]

C 10.8: [1904 - 1911]

Annual Reports. Included in the Serial Set 1884 - 1912.

Special Consular Reports

C 14.10: [1903, v. 27 - 1905, v. 36]

C 10.7: [1905, v. 37 - 1912, v.58]

Included in the Serial Set through 1905.

Special Agency Reports

C 10.13: [1906 - 1912]

Some volumes in the Serial Set

Department of State, Bureau

Advance Sheets of Consular Reports

S 4.5: [1898 - June 30, 1903]

Produced daily except Sundays & holidays

Consular Reports

S 4.7: [1880 - June 1903]

Produced monthly; compiled from the daily edition. Title inconsistent. Included in the Serial Set from 1882 - 1910.



*Annual Reports,
Commercial Relations*

S 4.1: [1855 - 1902]

Included in the Serial Set.



Special Consular Reports

S 4.9: [1890, v.1 - 1903, v.26]

Mostly included in the Serial Set

Reports on special topics previously published in an un-numbered series under S 4.10:

Commercial Regulations of Foreign Countries

S 1.9: [1819-1853]

"Annual" Report - produced sporadically. Most included in the Serial Set.

Department of State, Bureau of Statistics, 1855 - 1896
Department of State, Bureau of Foreign Commerce, 1897 - 1903

Advance Sheets of Consular Reports
S 4.5: [1898 - June 30, 1903]
Produced daily except Sundays & holidays

Consular Reports
S 4.7: [1880 - June 1903]
Produced monthly; compiled from the daily edition. Title inconsistent. Included in the Serial Set from 1882 - 1910.

Annual Reports, Commercial Relations
S 4.1: [1855 - 1902]
Included in the Serial Set.

Special Consular Reports
S 4.9: [1890, v.1 - 1903, v.26]
Mostly included in the Serial Set
Reports on special topics previously published in an un-numbered series under S 4.10.

Department of Commerce and Labor, Bureau of Statistics, 1903 - 1905
Department of Commerce and Labor, Bureau of Manufactures, 1905 - 1912

Daily Consular and Trade Reports

C 14.6: [July 1, 1903 - June 30, 1905]
C 10.5/1: [July 1, 1905 - February 28, 1910]
C 10.5/2: [July 5, 1910 - June 29, 1912]

(Substituted for a weekly publication from March 1910 - June 1910, C 10.14.)

Monthly Consular and Trade Reports

C 14.8: [July 1903 - June 1905]
C 10.6: [July 1905 - June 1910]

Included in the Serial Set from 1882 till discontinued in 1910.

Commercial Relations

C 14.5: [1903]
C 10.8: [1904 - 1911]

Annual Reports. Included in the Serial Set 1884 - 1912.

Special Consular Reports

C 14.10: [1903, v. 27 - 1905, v. 36]
C 10.7: [1905, v. 37 - 1912, v.58]

Included in the Serial Set through 1905.

Special Agent Series

C 10.13: [1906 - 1912]

Some volumes in the Serial Set.

Department of Commerce, Bureau of Foreign and Domestic Commerce, 1912 - 1953

Daily Consular and Trade Reports

C 18.5: [1912-1921]

Commercial Relations

C 18.16: [1912]

Included in the Serial Set.

Special Consular Reports

C 18.9: [1912 - 1923]

Not included in the Serial Set.

Special Agent Series

C 18.11: [1912-1924]

Not included in the Serial Set.



Daily Consular and Trade Reports

C 14.6: [July 1, 1903 - June 30, 1905]

C 10.5/1: [July 1, 1905 - February 28, 1910]

C 10.5/2: [July 5, 1910 - June 29, 1912]

(Substituted for a weekly publication from March 1910 - June 1910, C 10.14:)





Monthly Consular and Trade Reports

C 14.8: [July 1903 - June 1905]

C 10.6: [July 1905 - June 1910]

Included in the Serial Set from 1882 till
discontinued in 1910.



Commercial Relations

C 14.5: [1903]

C 10.8: [1904 - 1911]

Annual Reports. Included in the Serial Set 1884 - 1912.





Special Consular Reports

C 14.10: [1903, v. 27 - 1905, v. 36]

C 10.7: [1905, v. 37 - 1912, v.58]

Included in the Serial Set through 1905.



Special Agent Series

C 10.13: [1906 - 1912]

Some volumes in the Serial Set.

Department of Commerce and Labor, Bureau of Statistics, 1903 - 1905

Department of Commerce and Labor, Bureau of Manufactures, 1905 - 1912

Daily Consular and Trade Reports

C 14.6: [July 1, 1903 - June 30, 1905]
C 10.5/1: [July 1, 1905 - February 28, 1910]
C 10.5/2: [July 5, 1910 - June 29, 1912]

(Substituted for a weekly publication from March 1910 - June 1910, C 10.14)

Monthly Consular and Trade Reports

C 14.8: [July 1903 - June 1905]
C 10.6: [July 1905 - June 1910]

Included in the Serial Set from 1882 till discontinued in 1910.

Commercial Relations

C 14.5: [1903]
C 10.8: [1904 - 1911]

Annual Reports. Included in the Serial Set 1884 - 1912.

Special Consular Reports

C 14.10: [1903, v. 27 - 1905, v. 36]
C 10.7: [1905, v. 37 - 1912, v.58]

Included in the Serial Set through 1905.

Special Agent Series

C 10.13: [1906 - 1912]

Some volumes in the Serial Set

Department of Commerce, Bureau of Foreign and Domestic Commerce, 1912 - 1953

Daily Consular and Trade Reports

C 18.5: [1912-1921]

Commercial Relations

C 18.16: [1912]

Included in the Serial Set.

Special Consular Reports

C 18.9: [1912 - 1923]

Not included in the Serial Set.

Special Agent Series

C 18.11: [1912-1924]

Not included in the Serial Set.



Daily Consular and Trade Reports

C 18.5: [1912-1921]

Commercial Relations

C 18.16: [1912]

Included in the Serial Set.

Special Consular Reports

C 18.9: [1912 - 1923]

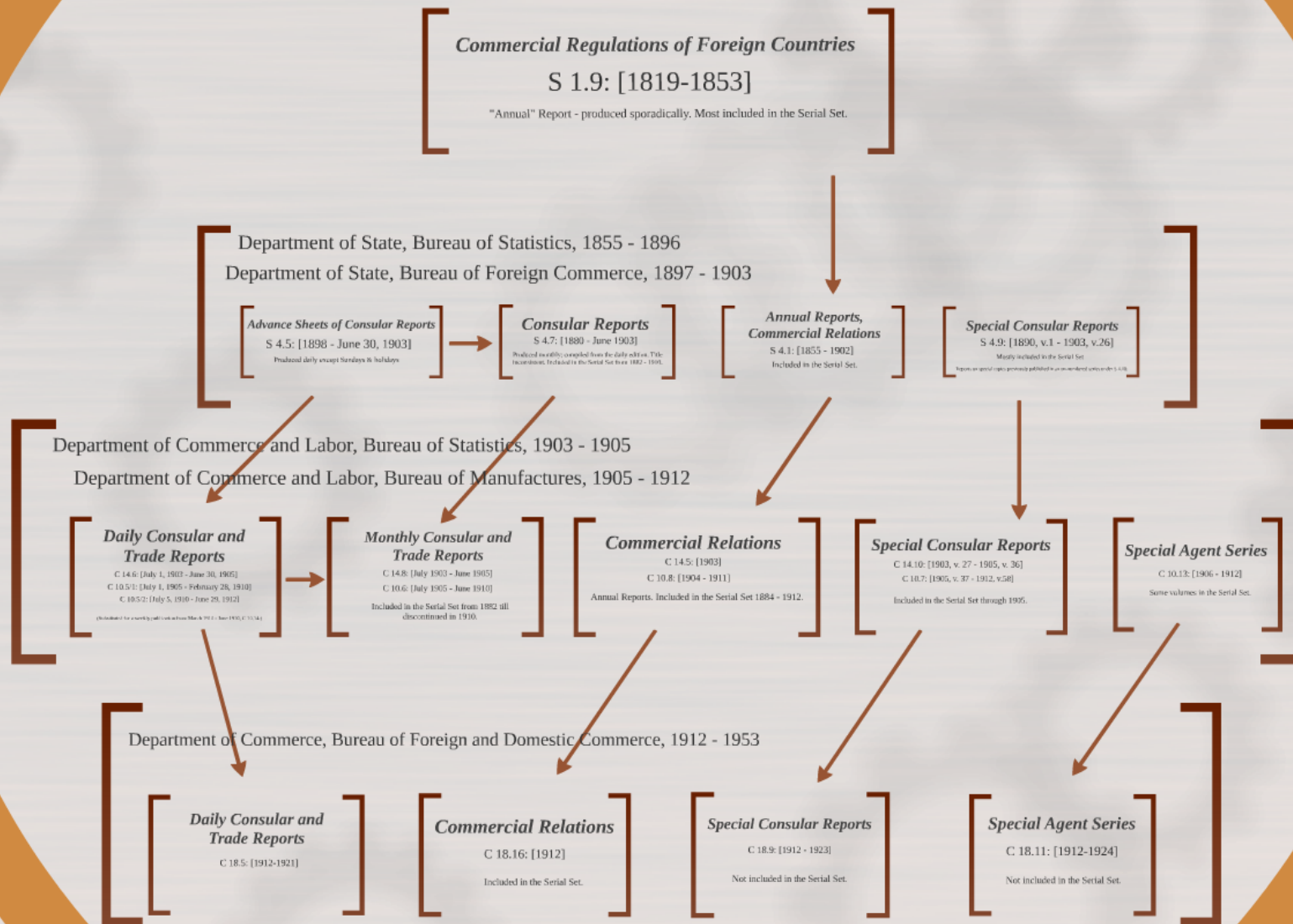
Not included in the Serial Set.

Special Agent Series

C 18.11: [1912-1924]

Not included in the Serial Set.

Lineage of the Consular Reports



Access

"Few if any public documents of the United States have been more highly regarded in public libraries or more extensively used than the monthly series of the Consular reports..."

- *Monthly Catalogue*, July 1910

Digital Copies &
Full Text Searching

- U.S. Serial Set
- HathiTrust
- Internet Archive

Digital Copies & Full Text Searching

- U.S. Serial Set
- HathiTrust
- Internet Archive

Invaluable Sources

Checklist of United States Public Documents, 1789-1909. 3rd Edition.
Washington, D.C.: Government Printing Office, 1911.

"Consular Reports." *Monthly Catalogue United States Public Documents*,
no. 187 (July 1910): 9-13.

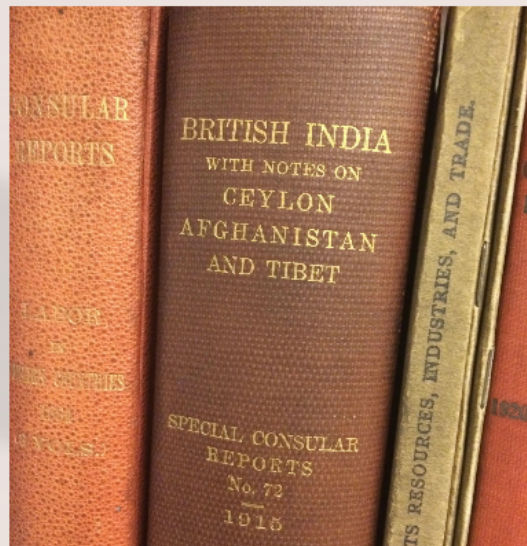
Werking, R.H. "United States Consular Reports: Evolution and Present
Possibilities." *Business History*, 23, no. 3 (November 1981): 300-304.

Storch, Neil T. "Adams, Franklin and the Origin of Consular
Representation." *Foreign Service Journal*, 52, no. 10 (October 1975): 11-13.

Reports of the Department of Commerce and Labor, various years.

Guide to U.S. Government Publications. Gale, 2009.

Thank You! Questions?



Rebecca C. Hyde
Saint Louis University
rhyde1@slu.edu
Prezi: bit.ly/1jnvFWn