

The National Library of Education: a national library at the U.S. Department of Education



Depository Library Council
Government Publishing Office
October 19, 2015

Pamela Tripp-Melby
Pamela.Tripp-Melby@ed.gov

The U.S. Department of Education's mission is to promote student achievement and preparation for global competitiveness by fostering educational excellence and ensuring equal access

- Focus national attention on key educational issues
- Collect data on America's schools and disseminate research
- Prohibit discrimination and ensure equal access to education
- Establish policies on federal financial aid for education, and distribute and monitor those funds

The Institute of Education Sciences (IES) is the research arm of ED and connects research, policy, and practice

The Centers

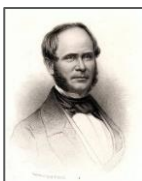
- National Center for Education Research
- National Center for Special Education Research
- National Center for Education Statistics
- **National Center for Education Evaluation and Regional Assistance**

The mandate

- Conduct peer-reviewed scientific studies
- Fund top educational researchers
- Collect and analyze statistics including long-term longitudinal studies
- Conduct evaluations of large-scale educational projects and federal education programs
- Help states work toward data-driven school improvement

National Library
of Education

From 19th century beginnings...



Congress established the library as a national library in 1994

- Provide a central location within the Federal Government for information about education
- Provide comprehensive reference services on matters related to education
 - to staff
 - other government agencies
 - researchers and other members of the education community
 - the general public

National Library
of Education



The collections:

- 50,000 circulating books
- 450 journal subscriptions
- Over 30 e-resources with 7,500 e-journals

The library staff



National Library
of Education

Our message to ED staff is to consult the librarians

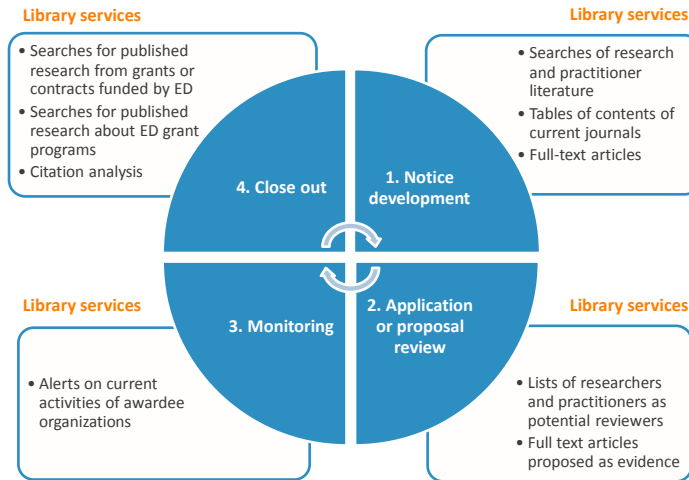


- Find relevant research on post-secondary education
- Know what is in the news
- Learn about leadership and teamwork

Contact:
202-205-5015
AskaLibrarian@ed.gov

National Library
of Education

For staff who are grant program officers or manage large contracts: the library supports the entire award lifecycle



AskALibrarian@ed.gov

National Library
of Education

State Information sites are a popular library product providing information on 52 jurisdictions

National Library of Education
EXPLORE | DISCOVER | CONNECT

Search for Books (Library Catalog)

Advanced Search for Books (Library Catalog)

Search for Articles (Quick search to pre-selected information resources)

State Information Sites: Select a State

The resources in the State Information Sites are intended to provide ED staff with a starting point for understanding State context. For State-specific information related to Office of State Support (OSS) programs and policies (e.g., ESEA Title I, Title II, Title III, School Improvement Grants, Race to the Top, State ESEA Flexibility, and State Equity Plans), please contact the OSS mailbox listed on the individual State Information Site.

Select from Map

Select from List

- Alabama
- Alaska
- Arizona
- Arkansas
- California
- Colorado
- Connecticut
- Delaware
- District of Columbia
- Florida
- Georgia
- Hawaii
- Idaho
- Illinois
- Indiana
- Iowa
- Kansas
- Kentucky
- Louisiana
- Maine
- Maryland
- Massachusetts
- Michigan
- Minnesota
- Mississippi
- Missouri
- Montana
- Nebraska
- Nevada
- New Hampshire
- New Jersey
- New Mexico
- New York
- North Carolina
- North Dakota
- Ohio
- Oklahoma
- Oregon
- Pennsylvania
- Puerto Rico
- Rhode Island
- South Carolina
- South Dakota
- Tennessee
- Texas
- Utah
- Vermont
- Virginia
- Washington
- West Virginia
- Wisconsin
- Wyoming

Find at ConnectED.ed.gov/nle
Developed in partnership with the Office of State Support

National Library
of Education

State Information Sites provide links to current state contacts, data, news & academic articles

Washington: State Information Site

The resources in this State Information Site are intended to provide ED staff with a starting point for understanding State context. For State-specific information related to Office of State Support (OSS) programs and policies (e.g., ESEA Title I, Title II, Title III, School Improvement Grants, Race to the Top, State ESEA Flexibility, and State Equity Plans) in Washington, please contact the responsible OSS State Lead for Washington at OSS.Washington@ed.gov.

Washington State Flag



Washington Agencies and Personnel

State Board of Education & Staff
 State Department of Education
 State Department of Education Staff
 State Profile (Education Commission of the States)

Research on Education in Washington

Differentiated Accountability
 Early Learning
 ED Regional Education Laboratory Reports
 English Language Acquisition
 School Turnaround
 Teacher & Principal Effectiveness

Washington Associations

American Federation of Teachers
 Association of Washington School Principals
 National Education Association
 National School Board Association

Washington Legislature and Legislation

House Committee on Education
 K-12 Governance (Education Commission of the States)
 Senate Committee on Education
 State Laws
 State Legislature

Washington Data

Federal Sources
 ED Data Express
 ED ESEA Flexibility
 ED IDEA Section 518 Data Products (No state-specific URL)
 ED National Teacher Preparation Title II Reports (No state-specific URL)
 ED Office for Civil Rights Data (No state-specific URL)
 ED School District Mapping and Demographics (No state-specific URL)
 ED State Certification Data (No state-specific URL)
 ED State Education Data Profiles
 US Census Bureau SAPE Data (No state-specific URL)
 US Census Bureau State and County QuickFacts

State Sources
 Common Core Assessment
 Dept. of Education Accountability
 Dept. of Education Statistics
 ESEA Title III Guidance
 School Performance Report Cards
 Special Education Data Reports
 Teacher & Leader Effectiveness

Washington Education News

From Education Week
 Seattle Teachers' Strike Encompasses Range of Issues - Education Week
 Shock Waves Reverberate From Wash. State Charter Ruling - Education Week
 Striking Seattle teachers point to high cost of living - Education Week
 Charter School Commission preparing to close down - Education Week
 The Latest on Seattle teacher strike: 'All eyes on Seattle' - Education Week
 More from Education Week

Newspapers & Newswires
 Teacher contracts still being negotiated across Washington
 As Common Core results trickle in, initial goals unfulfilled
 As Common Core results trickle in, initial goals unfulfilled
 As Common Core results trickle in, initial goals unfulfilled
 Ex-treasurer admits to stealing \$65,000 from teachers union
 More from Newspapers & Newswires

National Library
of Education

The National Library of Education has a significant collection of historical materials dating from the 1800s

- A rich source of education and social history
- Dynamics of educational change
- What subjects were worth teaching
- How teachers taught
- What was expected of students
- 28,000 textbooks
- 800 volumes of education research
- 16,000 titles of ED publications
- 3,000 volumes of historical journals



National Library
of Education

The early readers in the collection reflect the nation's agrarian and religious nature



LESSON XXXV.

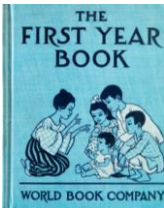


sin	eye	one	can
his	did	you	who
see	but	may	men

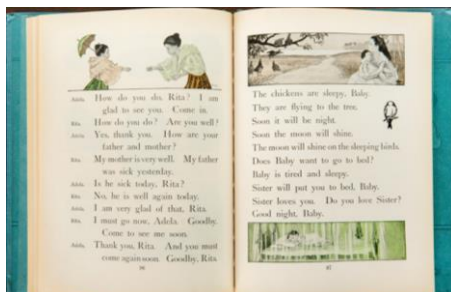
God can see all.
 Who can see God? Not one.
 Do not sin, for God can see
 you.
 Men may not see you, but
 the eye of God is on you.

National Library
of Education

Some of the textbooks were for use in diverse communities



A reader for schools in the Philippines when it was an American territory



Early reader in English and Lakota, a Native American language

National Library
of Education

Unlocking the treasures of the NLE's historical government document collection

Reports of the Commissioner of Education, 1870-1964

National education overviews, state and regional level summaries of activities and statistics, plus special topic reports

Special Report example:

- *The Consolidation of Schools and The Transportation of Pupils* (1902)

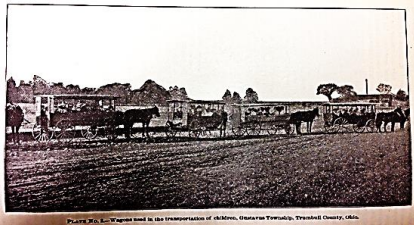
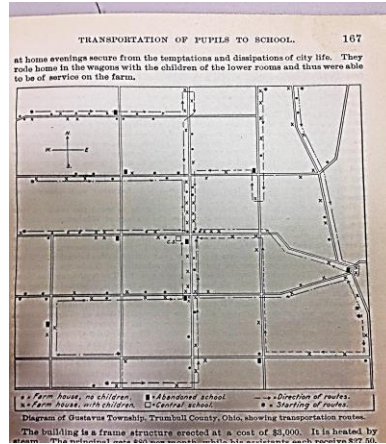


Figure 21. A wagon used in the transportation of children, Gustavus Township, Trumbull County, Ohio.



TRANSPORTATION OF PUPILS TO SCHOOL. 167
at home evenings secure from the temptations and dissipation of city life. They ride home in the wagons with the children of the lower rooms and thus were able to be of service on the farm.

• Farm house, no children. • Abandoned school. — Direction of routes.
• Farm house, no children. • Central school. • Starting of routes.
Diagram of Gustavus Township, Trumbull County, Ohio, showing transportation routes.
The building is a frame structure erected at a cost of \$3,000. It is heated by steam. The school cost \$20,000 and the building for each teacher \$275.00.

National Library
of Education

Other titles offer glimpses into the breadth of the agency's interests over the years

U.S. Bureau of Education, Circular of Information, 1870-1903

Many editions bound by years include reports different topics, correspondence, proceedings

Examples of reports:

- Preparation for the Education Exhibit at the 1884 World's Fair
- History of Federal and State Aid to Higher Education, 1890
- English-Eskimo Vocabulary and ethnographical memoranda, 1890
- The Teaching and History of Mathematics in the U.S.

Reports by General Agent of Education for Alaska to the Commissioner, 1890-1929

Introduction of Reindeer in Alaska, 1890 –

- Founder of first missionary school in the Seward peninsula has idea to import reindeer to teach herding to native Alaskans, 1890
- By 1905 there are an estimated 10,000 reindeer
- 1910-1913 Reindeer program continues as an integral part of the educational system, with district superintendents of schools also being superintendents of the Reindeer Service
- 1929 Governor of the Territory of Alaska assumes responsibility for reindeer supervision

National Library
of Education

Statistics collection has been central to the department's responsibilities for many years

Biennial Survey of Education, 1916-1958

- 1916-18 volume
 - Higher education, educational hygiene, agricultural education
 - Public education in the cities including Americanization
 - Rosenwald schools statistics, costs
- 1943-44 volume
 - Overall status of education
 - Number of schools, enrollment, instructional personnel, graduates

Condition of Education, 1975-present (online as of 1989)

- Annual report mandated by Congress with key indicators on important topics and trends:
 - educational attainment and economic outcomes
 - aspects of elementary, secondary, and post-secondary education
 - international comparisons

Public Access to Federally Funded Scientific Research

A government-wide initiative with
significant implications

Goal is to increase access to the results of federally funded scientific research publications and data

- White House Office of Science and Technology February 2013 memo outlined requirements
- Public must be able to:
 - Read, download, and analyze text and research data
 - Access via easy public search
 - Have full and free access to metadata upon first publication
 - Have a link to location of full-text once embargo is ended
- Federal agencies are developing plans for free access to the products of their research grants and contracts



Government agencies are working together on implementation

- Applies to agencies with over \$100 million in annual research and development expenditures
- 16 federal agencies have published their plans
- ED's plan is still in review but the Institute of Education Sciences already requires that publications resulting from its grants be made publicly available after an embargo period

For more information on agencies' plans:

http://www.cendi.gov/projects/Public_Access_Plans_US_Fed_Agencies.html

Or Google: CENDI Public Access Plans



Objectives for scientific digital data...

- Ensure researchers have data management plans
 - Protect confidentiality and personal privacy
 - Recognize proprietary interests and IP
 - Preserve balance between value of long-term preservation and access and its costs and administrative burden
- Promote deposit of data in publicly accessible databases
- Encourage cooperation with private sector to improve data access and compatibility
- Develop approaches for appropriate attribution of data sets
- Support training, education related to data management
- Develop options for sustaining data repositories

...are acknowledged by most agencies to be challenging to achieve

ERIC will be the primary repository for access to research funded by the Department of Education

- ERIC is a recognized destination for education researchers
- Repository, indexing infrastructure, and relationships with publishers are already operational
- Authors will be required to submit the “final peer-reviewed manuscript” of their article if their research was supported by IES grant funding

ERIC Online Submission Form

Title of the Submitted Material
Please enter the title exactly as it appears on the submitted material (including capitalization).

Author(s)
Please enter the author's name in the order that they appear in the source (left to right).

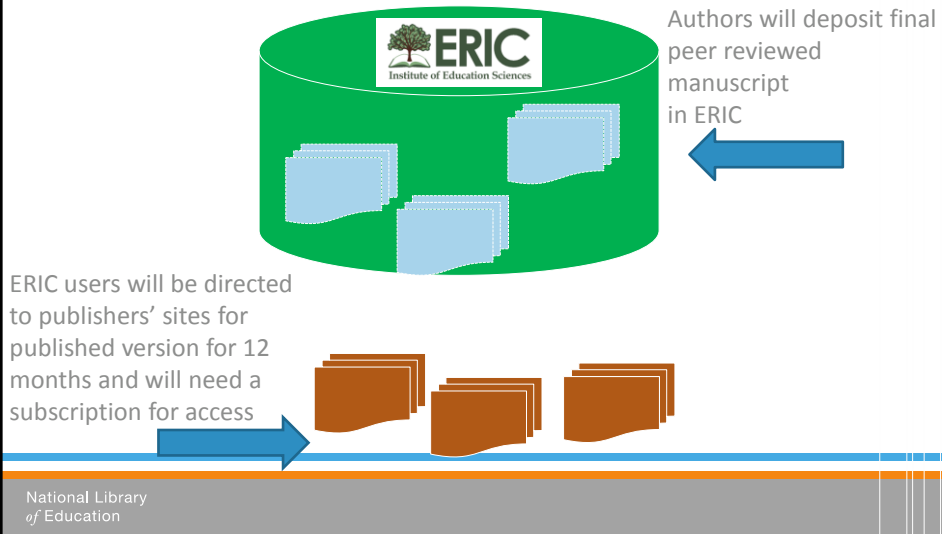
Abstract
Please make sure your abstract follows the guidelines of lib.umd.edu/ERIC/.

Has your work been funded (in whole or in part) by U.S. government research grant or contract?
 Yes, an IES grant or contract
 Yes, a Department of Education (non-IES) grant or contract
 No, a non-Department of Education grant or contract

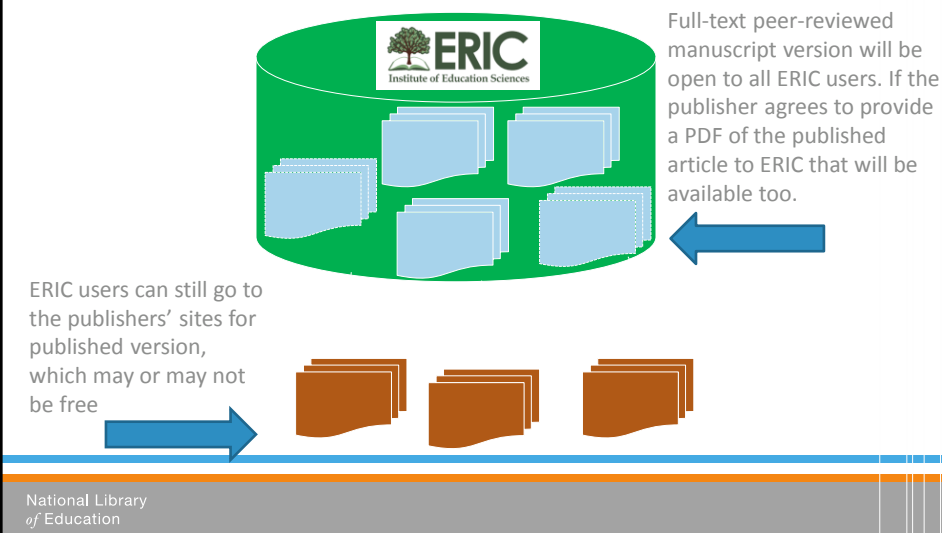
What type of document are you submitting?
Please make sure your document is eligible to submit based on the selection policy: lib.umd.edu/publishing/eligibility.

Submit

Once the department's plan is implemented and research is published...



When the embargo period (12 months) for each article is over....



**As a result, in coming years more research publications
and data will be available for public use**



National Library
of Education

Thank you

Pamela Tripp-Melby
Director, National Library of Education
Washington, D.C.
202-453-6536
Pamela.Tripp-Melby@ed.gov
Or AskALibrarian@ed.gov

National Library
of Education