

National Library of Medicine



Danielle Walker, MLIS
Reference & Web Services Section
Health & Information Products Unit
National Library of Medicine
National Institutes of Health
Department of Health and Human Services
October 19, 2015

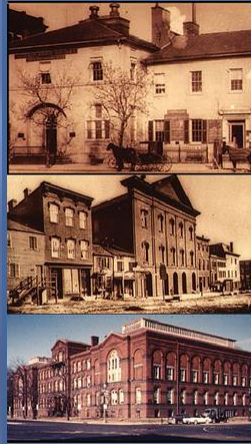
NATIONAL LIBRARY OF MEDICINE, NATIONAL INSTITUTES OF HEALTH, HEALTH AND HUMAN SERVICES

Agenda

- NLM Overview
- Customer Service
- Resources

NATIONAL LIBRARY OF MEDICINE, NATIONAL INSTITUTES OF HEALTH, HEALTH AND HUMAN SERVICES

Intro



The first three buildings that housed the National Library of Medicine, beginning in 1836; (from top to bottom) the U.S. Army Surgeon General's Office, Ford's Theatre, and the Army Medical Library.
Photos: National Library of Medicine

NATIONAL LIBRARY OF MEDICINE, NATIONAL INSTITUTES OF HEALTH, HEALTH AND HUMAN SERVICES

World's Largest Medical Library

- 20+ million items
- 200+ languages
- 50+ miles of bookshelves



NATIONAL LIBRARY OF MEDICINE, NATIONAL INSTITUTES OF HEALTH, HEALTH AND HUMAN SERVICES

GPO Partnership

GPO is in partnership with the U.S. National Library of Medicine, National Institutes of Health to provide enhanced public access to:

- *Medical Subject Heading (MeSH)*, the National Library of Medicine's controlled vocabulary thesaurus
- *PubMed*, which comprises more than 20 million citations for biomedical literature from MEDLINE, life science journals, and online books
- *NLM LocatorPlus*, which allows for searching of the collections of the National Library of Medicine

NATIONAL LIBRARY OF MEDICINE, NATIONAL INSTITUTES OF HEALTH, HEALTH AND HUMAN SERVICES

Sampling of Employee Backgrounds

- Library & Information Science
- Medicine
- Computer Science
- Bioinformatics
- Information Technology
- Mathematics
- Engineering
- Molecular Biology
- Linguistics
- Toxicology
- History
- Liberal Arts



NATIONAL LIBRARY OF MEDICINE, NATIONAL INSTITUTES OF HEALTH, HEALTH AND HUMAN SERVICES

Who Uses Us

- Researchers/scientists
- Health professionals
- Librarians
- Students
- Teachers
- Historians
- Public
- Millions of users from around the world



NATIONAL LIBRARY OF MEDICINE, NATIONAL INSTITUTES OF HEALTH, HEALTH AND HUMAN SERVICES

Examples of Research & Development

- Personal health record
- Disaster management info & communication
- Tools to study genes and their role in disease
- The Visible Human Project

NATIONAL LIBRARY OF MEDICINE, NATIONAL INSTITUTES OF HEALTH, HEALTH AND HUMAN SERVICES

What makes us different from many biomedical reference services?

- Large volume
 - Over 100,000 questions
- Answering questions regarding our own products and services
- Supporting those products and services
- Feedback into product improvement
- Diverse and international customers
- Many first-time, one-time customers asking repetitive questions

NATIONAL LIBRARY OF MEDICINE, NATIONAL INSTITUTES OF HEALTH, HEALTH AND HUMAN SERVICES

Reference and Customer Service

1st level - Contract Staff

- First line defense for customer service
- 15 minute limit
- Telephone & e-mail
- Handle 66% of all questions from offsite
- Refer others to reference staff

2nd level - Reference Staff

- Provide expert service
- Create & modify tools
- Reference questions from NLM staff
- Special projects

NATIONAL LIBRARY OF MEDICINE, NATIONAL INSTITUTES OF HEALTH, HEALTH AND HUMAN SERVICES

Questions!

I would like to find the longest surviving renal transplant patient. I am aware of a patient transplanted in April 1971 and would like to know if any are known to have survived longer, urology.

Would you please help me find a list of all allowed CC/MCC Complication comorbidities and major CC's. I've found the list of DRGs, just not the list of cc/mccs.

NATIONAL LIBRARY OF MEDICINE, NATIONAL INSTITUTES OF HEALTH, HEALTH AND HUMAN SERVICES

All kinds of questions!

Can I sell my body after I die

If a person has one testicle will he get one baby girl

Can the "near" operator be used in a PubMed search? If so, can you please describe how to use the operator (for example, should the word 'NEAR' or 'N' be used?) and what does the functionality do (for example, does 'NEAR' finds hits within 3 words?)?

The bride is middle-aged, newly wed and is about to lose her groom. She had no history of snoring prior to being married. She has tried "everything" including surgery. Could she be allergic to her husband? Could this be psychological because she married for convenience?

Resources: PubMed

The screenshot shows the PubMed website. At the top, there is a navigation bar with "NCBI Resources" and "How To" links. Below this is the "PubMed.gov" logo and a search bar with a "Search" button. The main content area features a large banner with the text: "PubMed comprises more than 21 million citations for biomedical literature from MEDLINE, life science journals, and online books. Citations may include links to full-text content from PubMed Central and publisher web sites." Below the banner are three columns of links: "Using PubMed" (including Quick Start Guide, Full Text Articles, FAQs, Tutorials, and New and Noteworthy), "PubMed Tools" (including Mobile, Single Citation Matcher, Batch Citation Matcher, Clinical Queries, and Topic-Specific Queries), and "More Resources" (including MeSH Databases, Journals in NCBI Databases, Clinical Trials, E-Utilities, and LinkOut).

NATIONAL LIBRARY OF MEDICINE, NATIONAL INSTITUTES OF HEALTH, HEALTH AND HUMAN SERVICES

Resources: MedlinePlus

The screenshot shows the MedlinePlus website. At the top, there is a navigation bar with "U.S. National Library of Medicine" and the MedlinePlus logo. Below this is a search bar with a "GO" button. The main content area features a navigation bar with "Health Topics", "Drugs & Supplements", and "Videos & Tools" links, and a "Español" link. Below the navigation bar are three main sections: "Health Topics" (with an apple icon and text: "Find information on health, wellness, disorders and conditions"), "Drugs & Supplements" (with a pill icon and text: "Learn about prescription drugs, over-the-counter medicines, herbs, and supplements"), and a featured article titled "Parts of the country are experiencing major flooding." with a photo of a flooded area and the text "Helpful information here." Below the article is a pagination control showing "1 2 3 4 ||".

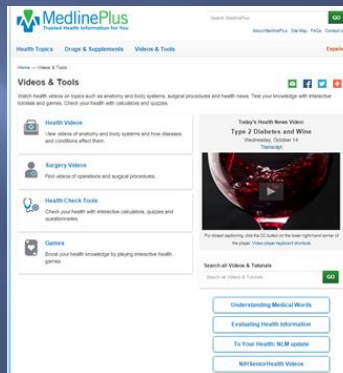
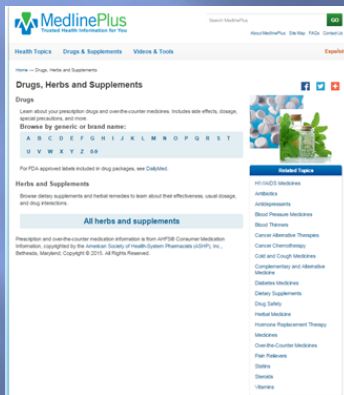
NATIONAL LIBRARY OF MEDICINE, NATIONAL INSTITUTES OF HEALTH, HEALTH AND HUMAN SERVICES

MedlinePlus / MedlinePlus en español



NATIONAL LIBRARY OF MEDICINE, NATIONAL INSTITUTES OF HEALTH, HEALTH AND HUMAN SERVICES

Medicines, Supplements & Videos



NATIONAL LIBRARY OF MEDICINE, NATIONAL INSTITUTES OF HEALTH, HEALTH AND HUMAN SERVICES

Resources: Clinical Trials

ClinicalTrials.gov
A service of the U.S. National Institutes of Health

ClinicalTrials.gov is a registry and results database of publicly and privately supported clinical studies of human participants conducted around the world. Learn more about clinical studies and about this site, including relevant history, policies, and laws.

Find Studies - About Clinical Studies - Submit Studies - Resources - About This Site -

ClinicalTrials.gov currently lists 200,272 studies with locations in all 50 States and in 190 countries.

Search for Studies
Example: "Heart attack" AND "Los Angeles"
Search

Advanced Search | See Studies by Topic | See Studies on a Map

Search Help

- How to search
- How to find results of studies
- How to read a study record

Locations of Recruiting Studies

- Non-U.S. Only (53%)
- U.S. Only (41%)
- Both U.S. and Non-U.S. (6%)

Total N = 36,681 studies (Data as of October 13, 2015)

- See more trends, charts, and maps

Learn More

- Tutorials for using ClinicalTrials.gov
- Glossary of common site terms
- For the Press
- Using our RSS Feeds

HOME RSS FEEDS SITE MAP TERMS AND CONDITIONS DISCLAIMER CONTACT NLM HELP DESK

NATIONAL LIBRARY OF MEDICINE, NATIONAL INSTITUTES OF HEALTH, HEALTH AND HUMAN SERVICES

Clinical Trials Results Page

Find Studies - About Clinical Studies - Submit Studies - Resources - About This Site -

Home > Find Studies > Search Results

98 studies found for: "breast" cancer AND maryland | Studies With Results
Modify this search | How to Use Search Results

List By Topic On a Map Search Details

+ Show Display Options

Download Subscribe to RSS

Include only open studies Exclude studies with Unknown status

Rank	Status	Study
1	Terminated Has Results	Acupuncture to Prevent Chemotherapy Dose Reduction Due to Chemotherapy-induced Peripheral Neuropathy in Breast and Colorectal Cancer Patients (GCC1232) Conditions: Breast Cancer; Colorectal Cancer Interventions: Device: Acupuncture using Seirin® needles; Device: Sham Acupuncture using Park Sham placebo acupuncture device

NATIONAL LIBRARY OF MEDICINE, NATIONAL INSTITUTES OF HEALTH, HEALTH AND HUMAN SERVICES

Clinical Trials Single Record

Acupuncture to Prevent Chemotherapy Dose Reduction Due to Chemotherapy-induced Peripheral Neuropathy in Breast and Colorectal Cancer Patients (GCC1232)

This study has been terminated.
(The PI has moved to another institution, which resulted in significant changes in the study design and study site.)

Sponsor:
University of Maryland

Information provided by (Responsible Party):
Ting Bao, University of Maryland

ClinicalTrials.gov Identifier:
NCT01881932

First received: March 13, 2013
Last updated: September 3, 2015
Last verified: September 2015
History of Changes

[Full Text View](#) [Tabular View](#) [Study Results](#) [Disclaimer](#) [How to Read a Study Record](#)

Purpose
In this study the investigators will assess how useful and safe acupuncture is in easing the pain, tingling and numbness that is caused by chemotherapy. The researchers hope this will prevent the need to reduce the amount of chemotherapy a patient receives.

Condition	Intervention
Breast Cancer Colorectal Cancer	Device: Acupuncture using Seirin® needles Device: Sham Acupuncture using Park Sham placebo acupuncture device

NATIONAL LIBRARY OF MEDICINE, NATIONAL INSTITUTES OF HEALTH, HEALTH AND HUMAN SERVICES

Resources: Environmental Health

U.S. Department of Health & Human Services
Environmental Health & Toxicology
National Library of Medicine
Specialized Information Services

Home | About Us | Site Map & Search | SIS News | Contact Us

Find Information About...
Especially For
Search TOXNET® Databases
Other Professional Resources
Resources for the Public
Enviro-Health Links
Guides & Tutorials
Quick Tours

Search Our Web Site

A to Z Index of Resources
A | C | D | E | F | G | H | I
J | K | L | M | N | O | P | Q | R
S | T | U | V | W | X | Y | Z

About TEHP
Toxicology & Environmental Health Information Program
Which Resource Should I Use?
Contact Us: Provide Feedback

For Information About...
Arctic Health - Climate Change
Addresses the issues affecting the health of our planet's northern-most inhabitants
Environmental Health Student Portal - Climate Change
Web information resources for middle school students and teachers
Tox Town - Climate Change
Environmental health concerns and toxic chemicals where you live, work, and play

Climate Change and Health

Search TOXNET
TOXNET - Collection of databases on hazardous chemicals, toxic releases, and environmental health

In the Spotlight
Starting Points for Environmental Health
Which Resource Should I Use?
TOXNET Database Descriptions
ALTBIB - Alternatives to Animal Testing

Stay Connected
Get Email Updates
Subscribe to RSS
Follow us on Twitter
Share

News & Events
SIS News
Conference Exhibit Schedule

Copyright, Privacy, Accessibility, FOIA
U.S. National Library of Medicine, 3600 Rockville Pike, Bethesda, MD 20894
National Institutes of Health, Health & Human Services

Last updated: 28 September 2015
First published: 25 March 2010
Meta-data | Permanence Level: Permanent; Dynamic Content

NATIONAL LIBRARY OF MEDICINE, NATIONAL INSTITUTES OF HEALTH, HEALTH AND HUMAN SERVICES

Resources: Genetics

Genetics Home Reference
Your Guide To Understanding Genetic Conditions

About Site Map Contact Us

Search

A service of the U.S. National Library of Medicine®

What's New

- dopamine transporter deficiency syndrome
- lung cancer
- ovarian cancer
- More...

Newborn Screening

Detecting genetic disorders for early treatment

In the Spotlight

- Back to School with Genetics Home Reference
- Precision Medicine
- Genetics and Human Traits

Genetic Disorders A to Z
and related genes and chromosomes

Conditions

The genetics of more than 1,000 health conditions, diseases, and syndromes.

Genes

More than 1,300 genes, health effects of genetic differences, and gene families.

Chromosomes

Chromosomes, mitochondrial DNA, and associated health conditions.

Handbook

Learn about mutations, inheritance, genetic counseling, genetic testing, genomic research, and more.

Glossary

Medical and genetics definitions.

Resources

Links to other genetics information and organizations.

Genetics Home Reference provides consumer-friendly information about the effects of genetic variations on human health. The resources on this site should not be used as a substitute for professional medical care or advice. Users seeking information about a personal genetic disease, syndrome, or condition should consult with a qualified healthcare professional. See [How can I find a genetics professional in my area?](#) in the Handbook.

NATIONAL LIBRARY OF MEDICINE, NATIONAL INSTITUTES OF HEALTH, HEALTH AND HUMAN SERVICES

NLM Database Assistance

- PubMed Training Manual
 - https://www.nlm.nih.gov/pubs/web_based.html
- PubMed Help/FAQ and Tutorial
 - <https://www.ncbi.nlm.nih.gov/books/NBK3827/#pubmedhelp.FAQs>
- NLM Fact Sheets
 - <https://www.nlm.nih.gov/pubs/factsheets/factsheets.html>
- Help Links for TOXNET Databases
 - <https://toxnet.nlm.nih.gov/newtoxnet/faq.html>
- Gallery of Mobile Apps and Sites
 - <https://www.nlm.nih.gov/mobile/index.html>

NATIONAL LIBRARY OF MEDICINE, NATIONAL INSTITUTES OF HEALTH, HEALTH AND HUMAN SERVICES

Questions?

danielle.walker@nih.gov
custserv@nlm.nih.gov

NATIONAL LIBRARY OF MEDICINE, NATIONAL INSTITUTES OF HEALTH, HEALTH AND HUMAN SERVICES