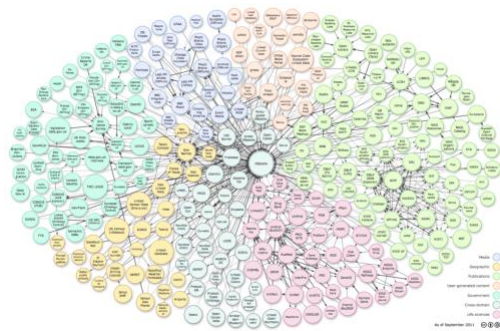
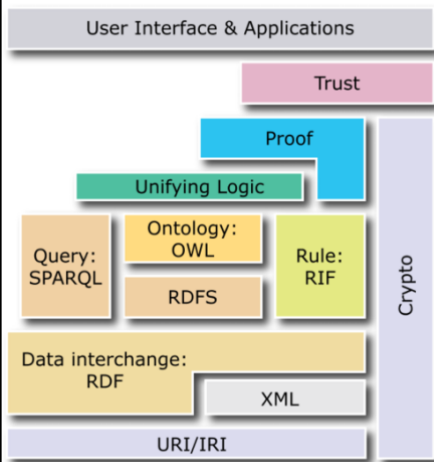


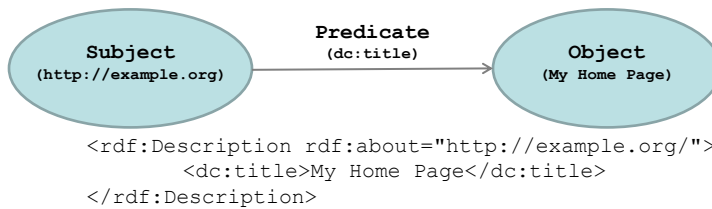
Using Linked Data to Organize Born Digital Government Information

Semantic web & linked data



RDF (Resource Description Framework):

- URI's stand in for things (e.g. <http://www.example.com#example>)
- Information about resources is expressed in triples
- Triples are like simple English sentences



3

OWL (Web Ontology Language):

- Builds on RDF (valid OWL is valid RDF)
- Adds vocabulary for expressing logical relationships between resources
- Designed to model domain knowledge in a way that can be understood by machines

4

SKOS (Simple Knowledge Organization System):

- An example of an OWL ontology (vocabulary) developed by W3C
- Designed to describe "KOS's," i.e. schemes for expressing information about topical subjects



DEPARTMENT OF THE NAVY
HEADQUARTERS UNITED STATES MARINE CORPS
3000 MARINE CORPS PENTAGON
WASHINGTON, DC 20350-3000

MCO 1306.16F
MPO
11 JUN 2013

MARINE CORPS ORDER 1306.16F

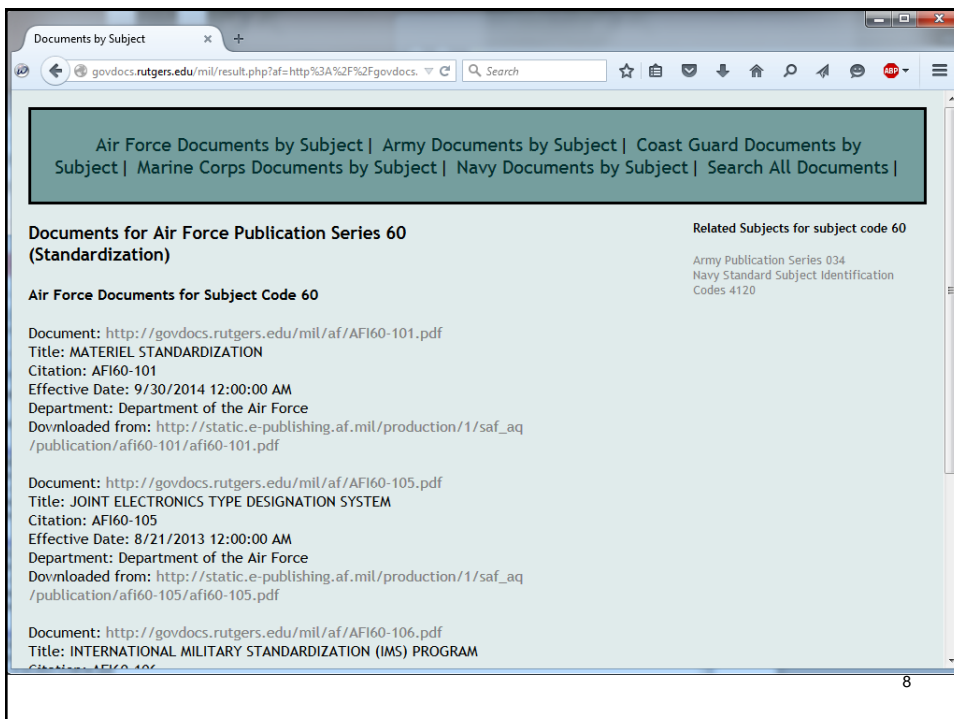
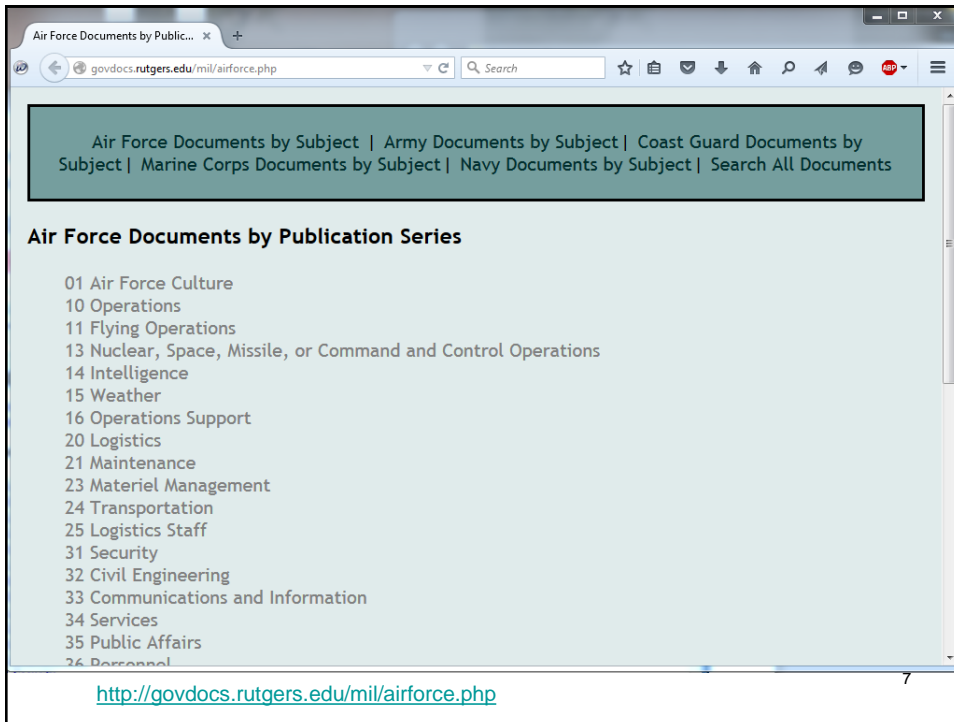
From: Commandant of the Marine Corps
To: Distribution List

Subj: CONSCIENTIOUS OBJECTORS

Ref: (a) MCO P1900.16F W/CH 2
(b) 38 U.S.C. Section 5303
(c) DOD Instruction 1300.06
(d) 50 U.S.C. APP 456(j)
(e) SECNAV M-5210.1

Encl: (1) Definitions
(2) Required Information to be Supplied by Applicants for Discharge or Noncombatant Service)
(3) Summary Sheet for Conscientious Objector Application
(4) Counseling Concerning Department of Veterans Affairs Benefits
(5) Sample Appointing Order
(6) Guide to the Investigating Officer
(7) Sample Investigation Report

[http://doni.daps.dla.mil/SECNAV%20Manuals1/5210.2%20\(2012\).pdf](http://doni.daps.dla.mil/SECNAV%20Manuals1/5210.2%20(2012).pdf)



Navy Documents by Standard ... x +

govdocs.rutgers.edu/mil/navy.php

Air Force Documents by Subject | Navy Documents by Subject | Coast Guard Documents by Subject | Marine Corps Documents by Subject | Navy Documents by Subject | Search All Documents |

Browse Navy Documents by Standard Subject Identification Code

1000-1999 Military Personnel | 2000-2999 Information Technology and Communications | 3000-3999 Operations and Readiness | 4000-4999 Logistics | 5000-5999 General Administration and Management | 6000-6999 Medicine and Dentistry | 7000-7999 Financial Management | 8000-8999 Ordnance Material | 9000-9999 Ships Design and Material | 10000-10999 General Material | 11000-11999 Facilities and Activities Ashore | 12000-12999 Civilian Personnel | 13000-13999 Aeronautical and Astronautical Material |

- 1000-1999 Military Personnel
 - 1000 - 1099 GENERAL
 - 1000 General (include Marine Corps Standard Operating Procedures (SOPs))
 - 1001 Reserve Policies and Programs
 - 1010 Inspections
 - 1020 Uniforms
 - 1040 Retention/Career Planning
 - 1050 Leave and Liberty
 - 1070 Personnel Records
 - 1080 Personnel Accounting
 - 1100 - 1199 RECRUITING
 - 1100 General
 - 1110 Administration and Logistics
 - 1111 Manpower
 - 1120 Plans and Policy
 - 1121 Policy
 - 1122 Research
 - 1123 Program Analysis
 - 1130 Operations

Search Results x +

govdocs.rutgers.edu/mil/search.php?title=navy

Air Force Documents by Subject | Army Documents by Subject | Coast Guard Documents by Subject | Marine Corps Documents by Subject | Navy Documents by Subject | Search All Documents |

Search for 'navy' in title

Document: http://govdocs.rutgers.edu/mil/cg/CI_4491_2.pdf
 Title: COAST GUARD USE OF THE NAVY PRIORITY MATERIAL OFFICE (PMO), COMDTINST 4491.2
 Citation: CI 4491.2
 Effective Date:
 Department: Department of the Coast Guard
 Downloaded From: http://www.uscg.mil/directives/ci/4000-4999/CI_4491_2.pdf
 Subject: Navy Standard Subject Identification Codes 4491 (Requisitions and Other Material or Service Requests)

Document: http://govdocs.rutgers.edu/mil/cg/CI_1000_5F.pdf
 Title: ADMINISTRATION OF COAST GUARD AND NAVY OFFICERS ASSIGNED TO THE COAST GUARD/NAVY OFFICER EXCHANGE PROGRAMS
 Citation: CI 1000.5F
 Effective Date:
 Department: Department of the Coast Guard
 Downloaded From: http://www.uscg.mil/directives/ci/1000-1999/CI_1000_5F.pdf
 Subject: Navy Standard Subject Identification Codes 1000 (General (include Marine Corps Standard Operating Procedures (SOPs)))

Document: http://govdocs.rutgers.edu/mil/cg/CI_5420_23D.pdf
 Title: NAVY AND COAST GUARD (NAVY AND COAST GUARD) BOARD
 Citation: CI 5420.23D
 Effective Date:
 Department: Department of the Coast Guard
 Downloaded From: http://www.uscg.mil/directives/ci/5000-5999/CI_5420_23D.pdf
 Subject: Navy Standard Subject Identification Codes 5420 (Boards, Committees, Councils and Groups)

Documents by Subject

govdocs.rutgers.edu/mil/result.php?all=http%3A%2F%2Fgovdocs

Air Force Documents by Subject | Army Documents by Subject | Coast Guard Documents by Subject | Marine Corps Documents by Subject | Navy Documents by Subject | Search All Documents |

Documents for Navy Standard Subject Identification Codes 4491 (Requisitions and Other Material or Service Requests)

Documents for Subject Code 4491

Document: http://govdocs.rutgers.edu/mil/cg/CI_4491_2.pdf
 Title: COAST GUARD USE OF THE NAVY PRIORITY MATERIAL OFFICE (PMO), COMDTINST 4491.2
 Citation: CI 4491.2
 Effective Date:
 Department: Department of the Coast Guard
 Downloaded from: http://www.uscg.mil/directives/ci/4000-4999/CI_4491_2.pdf

Document: http://govdocs.rutgers.edu/mil/cg/CI_4491_1.pdf
 Title: INVENTORY CONTROL POINT REMOTE STOCK LOCATION PARTS AND MATERIAL REQUEST FORM POLICY, COMDTINST 4491.1
 Citation: CI 4491.1
 Effective Date:
 Department: Department of the Coast Guard
 Downloaded from: http://www.uscg.mil/directives/ci/4000-4999/CI_4491_1.pdf

Related Subjects for subject code 4491
 Army Publication Series 725
 Navy Standard Subject Identification Codes 4490

Documents by Subject

govdocs.rutgers.edu/mil/result.php?all=http%3A%2F%2Fgovdocs

Air Force Documents by Subject | Army Documents by Subject | Coast Guard Documents by Subject | Marine Corps Documents by Subject | Navy Documents by Subject | Search All Documents |

Documents for Army Publication Series 725 (Requisition and Issue of Supplies and Equipment)

Documents for Subject Code 725

Document: http://govdocs.rutgers.edu/mil/army/r725_1.pdf
 Title: SPECIAL AUTHORIZATON AND PROCEDURES FOR ISSUES, SALES, AND LOANS
 Citation: AR 725-1
 Effective Date: 10/17/2003
 Department: Department of the Army
 Downloaded from: http://www.apd.army.mil/pdffiles/r725_1.pdf

Document: http://govdocs.rutgers.edu/mil/army/r725_50.pdf
 Title: REQUISITION, RECEIPT, AND ISSUE SYSTEM
 Citation: AR 725-50
 Effective Date: 11/15/1995
 Department: Department of the Army
 Downloaded from: http://www.apd.army.mil/pdffiles/r725_50.pdf

Related Subjects for subject code 725
 Air Force Publication Series 23
 Air Force Publication Series 64
 Navy Standard Subject Identification Codes 4470
 Navy Standard Subject Identification Codes 4491

SKOS descriptions:

- Create individual objects for each `skos:ConceptScheme` and `skos:Concept`
- Assign uri's to each individual
- assign human readable descriptions to each uri (`skos:notation` and `skos:prefLabel`)
- add additional "lexical labels" (e.g., `rdfs:comment`) if there is more information available

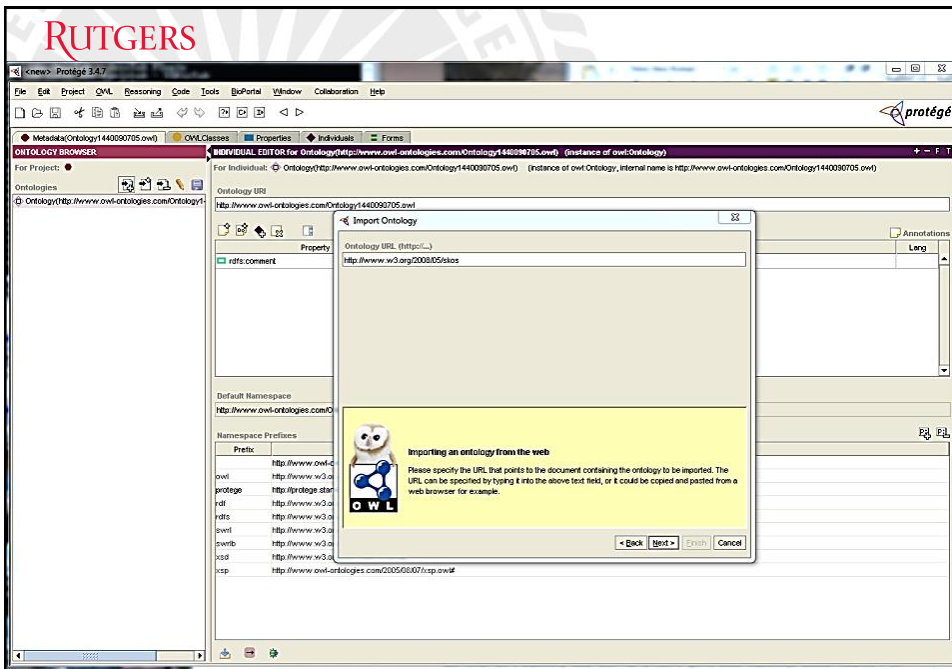
13

SKOS semantic relations:

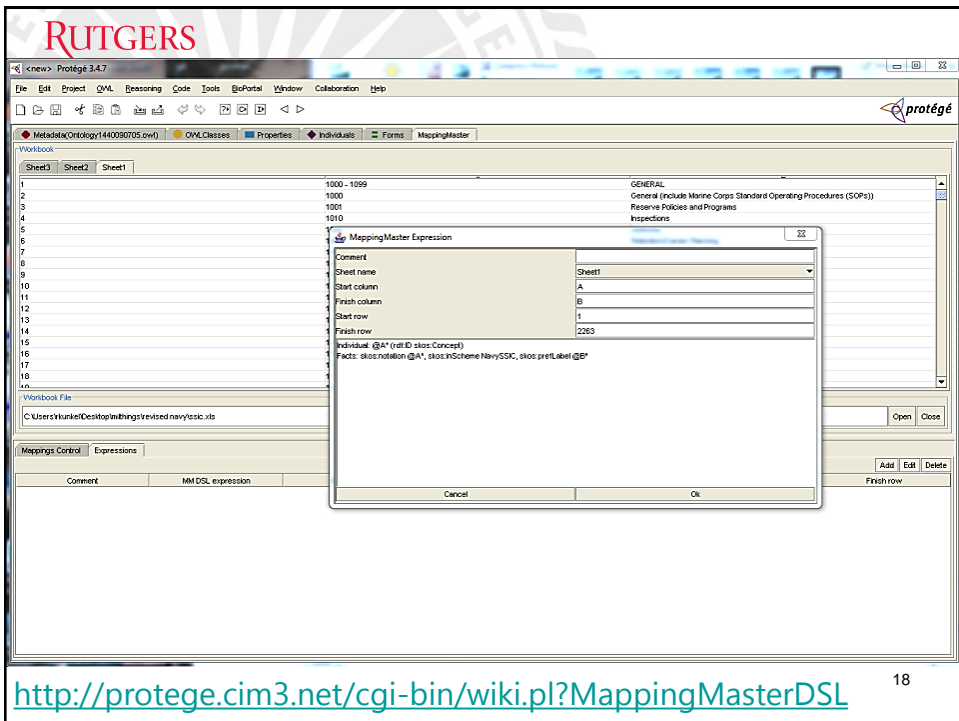
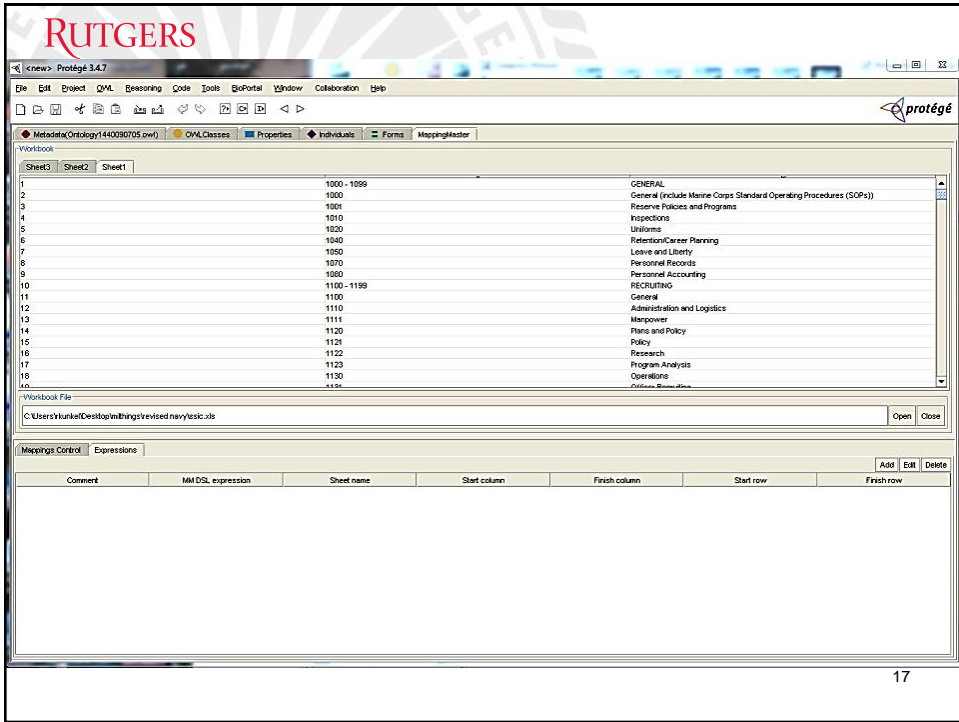
- use `skos:broader` and `skos:narrower` to relate concepts within a hierarchy
- use `skos:related` to suggest equivalencies within a single scheme (e.g., see also)
- use mapping relations to show relationships between concepts in different schemes (e.g. `skos:narrowMatch`, `broadMatch`, or `closeMatch`)

14

- <http://www.w3.org/wiki/ConverterToRdf>
- <http://protege.stanford.edu/>
- <http://protegewiki.stanford.edu/wiki/Import>



Protégé 3.4.7



<http://protege.cim3.net/cgi-bin/wiki.pl?MappingMasterDSL>

RUTGERS

Protégé 3.4.7

File Edit Project OWL Reasoning Code Tools BiPortal Window Collaboration Help

Metadata(Ontology/144000705.owl) OVLClasses Properties Individuals Forms MappingMaster

Worksheet: Sheet3 Sheet2 Sheet1

| | | |
|----|-------------|---|
| 1 | 1000 - 1099 | GENERAL |
| 2 | 1000 | General (include Marine Corps Standard Operating Procedures (SOPs)) |
| 3 | 1001 | Reserve Policies and Programs |
| 4 | 1010 | Inspections |
| 5 | 1020 | Uniforms |
| 6 | 1040 | Retention/Career Planning |
| 7 | 1050 | Leave and Liberty |
| 8 | 1070 | Personnel Records |
| 9 | 1080 | Personnel Accounting |
| 10 | 1100 - 1199 | RECRUITING |
| 11 | 1100 | General |
| 12 | 1110 | Administration and Logistics |
| 13 | 1111 | Manpower |
| 14 | 1120 | Plans and Policy |
| 15 | | |
| 16 | | |
| 17 | | |
| 18 | | |
| 19 | | |
| 20 | | |

Workbook File: C:\Users\vkuratel\Desktop\things\revised navy\stic.xls

MappingMaster V0.9

See <http://protége.cim3.net/cgi-bin/viki.pl?MappingMaster> for documentation.
Use the Expressions tab to define mappings using MappingMaster's DSL.
Click the Map button to perform mappings.

Mapping Ontology

Open Save Save As... Close

Error

Mapping error: error rendering expression
Individual: (@A* (rdf:type stic:Concept)
Facts: stic:relation (@A*, stic:scheme NavySSIC, stic:preLabel @B*
at sheet "Sheet1", current column A, current row 1
error setting property stic:scheme to value NavySSIC for object property stic:scheme for subject Thing_2, value must be class or individual

OK

MappingMaster V0.9

Default Name Encoding: rdfs:label
Default Entity Type: Class
Default Property Type: ObjectProperty
Default Property Value Type: xsd:string
Default Data Property Value Type: xsd:string

19

RUTGERS

Protégé 3.4.7

File Edit Project OWL Reasoning Code Tools BiPortal Window Collaboration Help

Metadata(Ontology/144000705.owl) OVLClasses Properties Individuals Forms MappingMaster

Worksheet: Sheet3 Sheet2 Sheet1

| | | |
|----|-------------|---|
| 1 | 1000 - 1099 | GENERAL |
| 2 | 1000 | General (include Marine Corps Standard Operating Procedures (SOPs)) |
| 3 | 1001 | Reserve Policies and Programs |
| 4 | 1010 | Inspections |
| 5 | 1020 | Uniforms |
| 6 | 1040 | Retention/Career Planning |
| 7 | 1050 | Leave and Liberty |
| 8 | 1070 | Personnel Records |
| 9 | 1080 | Personnel Accounting |
| 10 | 1100 - 1199 | RECRUITING |
| 11 | 1100 | General |
| 12 | 1110 | Administration and Logistics |
| 13 | 1111 | Manpower |
| 14 | 1120 | Plans and Policy |
| 15 | 1121 | Policy |
| 16 | 1122 | Research |
| 17 | 1123 | Program Analysts |
| 18 | 1130 | Operations |
| 19 | 1131 | Offshore Business Area |
| 20 | | |

Workbook File: C:\Users\vkuratel\Desktop\things\revised navy\stic.xls

MappingMaster V0.9

See <http://protége.cim3.net/cgi-bin/viki.pl?MappingMaster> for documentation.
Use the Expressions tab to define mappings using MappingMaster's DSL.
Click the Map button to perform mappings.

Mapping Ontology

Open Save Save As... Close

Information

Mappings performed successfully.

OK

MappingMaster V0.9

Default Name Encoding: rdfs:label
Default Entity Type: Class
Default Property Type: ObjectProperty
Default Property Value Type: xsd:string
Default Data Property Value Type: xsd:string

20

<http://govdocs.rutgers.edu/ontologies>

RUTGERS

“On the Semantic Web the true potential of data is unleashed when it is interlinked. As concepts from different concept schemes are connected together they begin to form a distributed, heterogeneous global concept scheme. A web of concept schemes can serve as the foundation for new applications that allow meaningful navigation between KOSs”*

*Antoine Isaac & Ed Summers, *SKOS Simple Knowledge Organization System Primer*, W3C (August 18, 2009), <http://www.w3.org/TR/skos-primer/>.