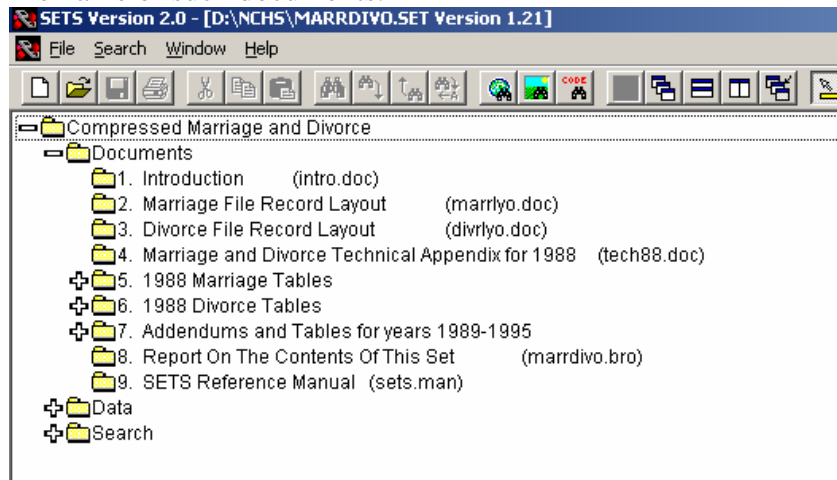


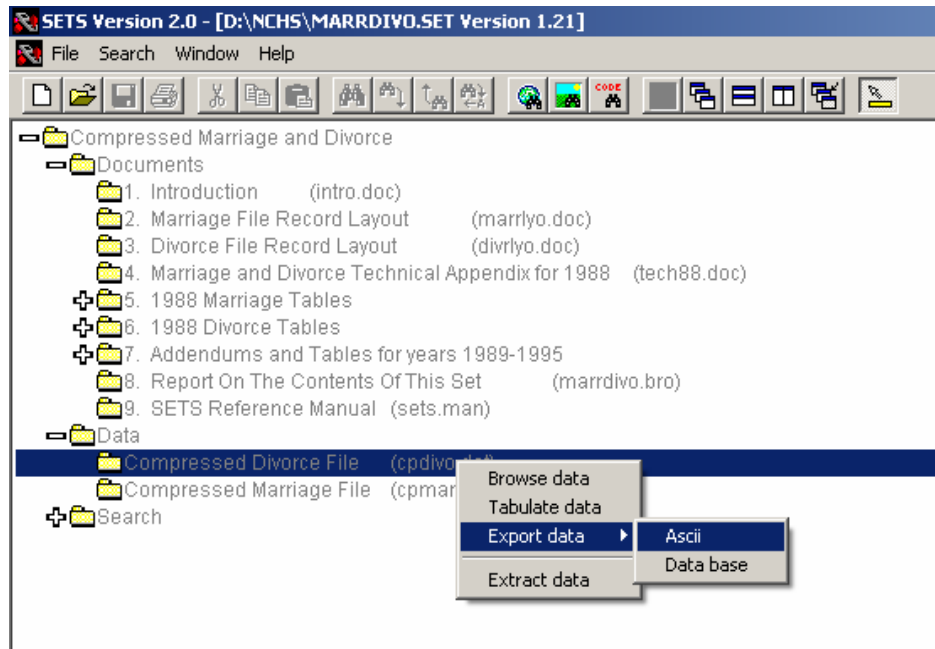
Exporting and Converting Data from
CDC/NCHS CD-ROM Series 21:
Marriage and Divorce Data, 1898-95

- Download and install SETS 2.0 from CDC website
 - <http://www.cdc.gov/nchs/about/otheract/sets/download.htm> for file and installation instructions.
 - *The version of SETS that comes with the CD-ROM, SETS 1.22, had a dated DOS interface and estimated 3 hours to export the divorce data on the CD-ROM. The latest build on the website, SETS 2.0, performed the job in less than 5 minutes for close to 900,000 records. Converting other data sets can be longer, however. One dataset that was estimated to take close to 12 hours on SETS 1.22 was completed in about 40 minutes.*
- Opened the “sets” file on the CD-ROM by going to File > Open, browsing to the CD-ROM drive, opening the folder “nchs”, and clicking on marrdivo.sets.
- Field codes and record details can be accessed via the SETS interface or can be found as Word Documents on the CD-ROM. The SETS 2.0 interface indicates the file name of such documents.

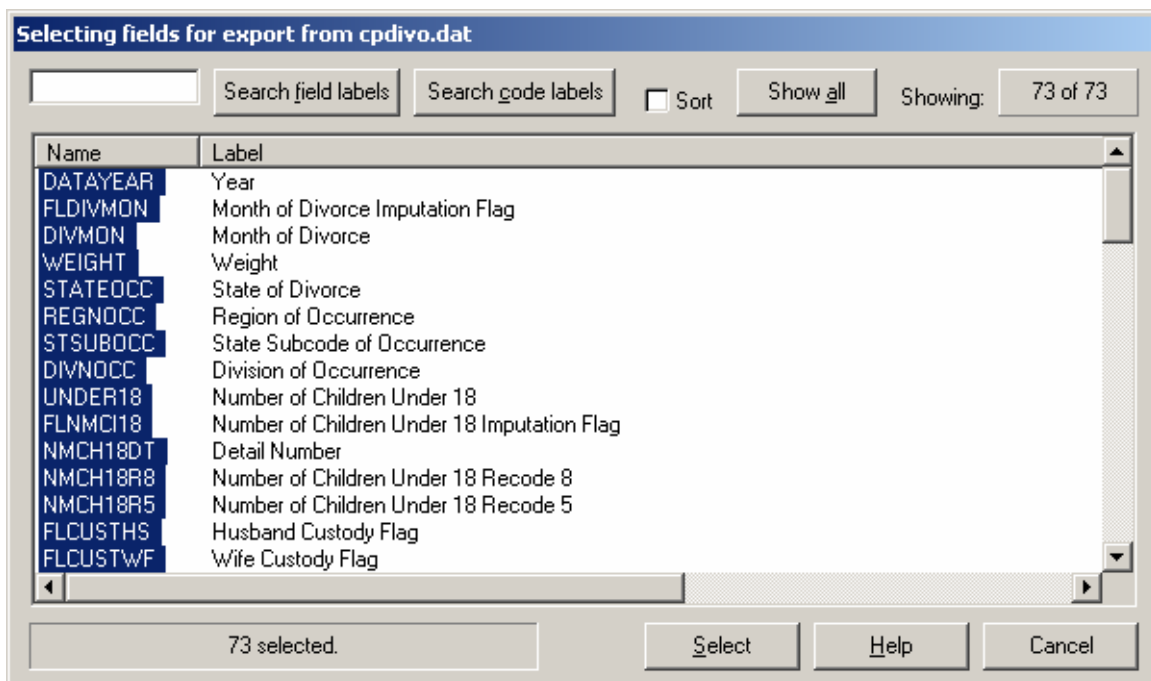


The navigation window above indicates that the marriage file record layout is contained in a file called marrlyo.doc while the divorce file record layout is on divrlyo.doc.

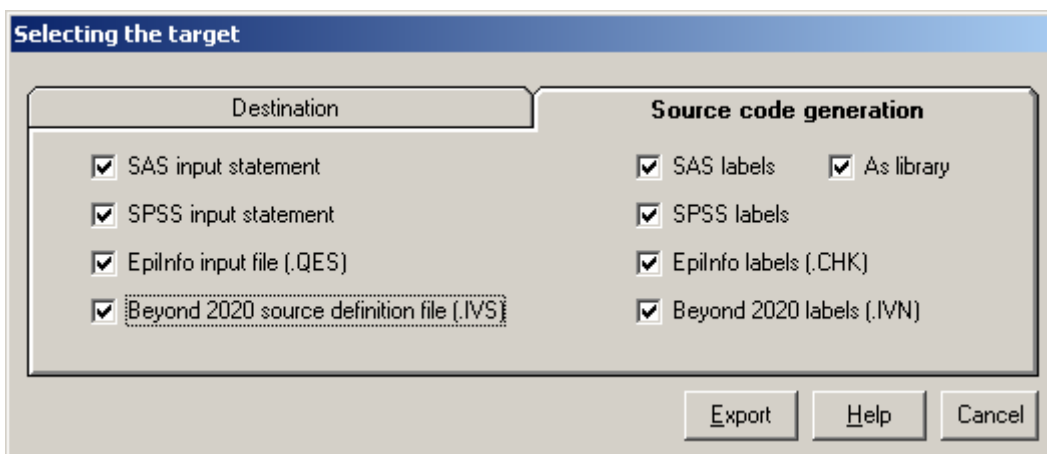
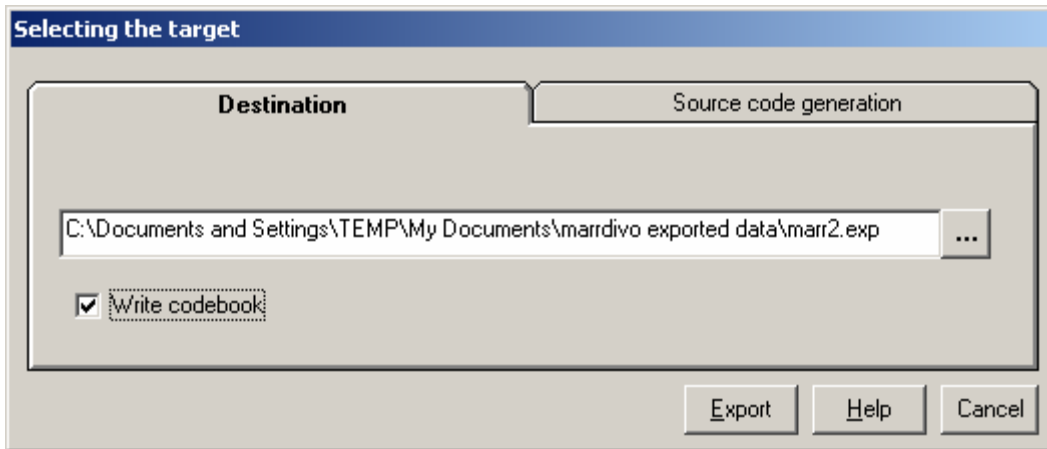
- To export the data, select click on the dataset you want to export and select ascii.



- A new window allows you to select which fields you want to export. To select all fields, click on the label that says “name”.



You have the option of selecting a codebook and whatever other kinds of data you want to export.



After you hit export, the new files are created in the specified destination.

The export function generated several files, including:

- A *.exp* file that contained the raw data.
- The SAS and SPSS outputs, which contained SAS scripts and SPSS input files for reading and labeling the output information.
 - To read the data file using SPSS, enter the full path to the file in the data list file statement, for example: **DATA LIST FILE="C:\My Documents\Data\da2992.txt" /**
 - For help on using SPSS to access data, use the ICPSR website <http://webapp.icpsr.umich.edu/cocoon/ICPSR-FAQ/0062.xml>.
- A *.cbk* file codebook that could be viewed with the notebook program. This codebook was not very useful. While the exported codebook provided field names, it did not provide descriptions of each field or how to interpret the numbers provided.