

Tutorials: Philosophies and Features

Karrie Peterson, NCSU

karrie_peterson@ncsu.edu

Presentation content

Will cover:

- ◆ Pedagogical principles
- ◆ Examples of features
- ◆ Compare to wizards
- ◆ Possible collaborations?

Won't cover:

- ◆ “How to” instructions
- ◆ Software or technology
- ◆ Comprehensive survey of govt docs tutorials
- ◆ Online vs real time teaching

Narrow definition of “Tutorial”

- ◆ Outcome involves learning a new skill or concepts
- ◆ Guided step by step explanation
- ◆ Modular approach
- ◆ Interactive
- ◆ Dynamic (animations to “show” not just tell)

Focus on the User

“To be educated is not to be informed, but to find illumination in informed living.”

Eduard Lindeman, from *The Meaning of Adult Education* (1926)

Pedagogical Principles

What are the characteristics of a good online tutorial?

Pedagogical Principles

- ♦ Culturally inclusive
- ♦ Objectives and outcomes outlined
- ♦ Provide context (why)
- ♦ Problem-based (or assignment-based) and teach concepts as well as skills
- ♦ Stimulate recall of prior learning
- ♦ Accommodate different learning styles via multimedia
- ♦ Allow for non-linear learning (modular)
- ♦ Simple and self-evident navigation
- ♦ Elicit performance (allow practice)

More pedagogical principles...

- ♦ Provide feedback - allow the user to test his understanding
- ♦ Enhance retention
- ♦ Provide a way to contact a librarian or other real-time helper
- ♦ Function well for target audience
- ♦ Be routinely updated by the provider
- ♦ Have mechanisms built in for the provider to evaluate effectiveness of the tutorial over time

A well-mannered tutorial

- ♦ Is welcoming and approachable
- ♦ Doesn't waste people's time
- ♦ Doesn't bore or intimidate people
- ♦ Impresses users by the speed with which their problem is solved, not the complexity of the tutorial
- ♦ Doesn't give outdated information

Some advantages of online tutorials . . .

- ◆ Remote & 24/7 access
- ◆ Accommodate different learning styles via multimedia
- ◆ Repeatable
- ◆ Individually paced
- ◆ Sometimes more interactive
- ◆ Accommodate different levels of prior knowledge



Virtual or Real Time...

All teaching involves
some tradeoffs

Those pesky tradeoffs...

We want to anticipate questions and need for more info...

But avoid overly long tutorials with complicated screens and tricky navigation

We want a contemporary and interesting presentation...

Without creating technological problems for users


...more tradeoffs

We want tutorials for solving problems not just showing use of a resource out of context...

But we can't design umpteen tutorials for lots of different situations

We want to target specific audiences...

How many versions can we realistically maintain?



What type of teaching device do you want?

- ◆ Drill and Practice
- ◆ Simulation
- ◆ Step-by-step tutorial
- ◆ Skill-based or conceptual or both



Who is the audience?

- ◆ Older or younger people?
- ◆ Students with specific assignment or members of public with research needs?
- ◆ Local users in familiar context or wide open to the public?
- ◆ What levels of prior knowledge?
- ◆ What time frame—leisurely self-education or quick study with quick results?

URLS

LOBO

www.lib.ncsu.edu/lobo2/

Patent Guide

[www.lib.ncsu.edu/ptdl/patents
/searching.html](http://www.lib.ncsu.edu/ptdl/patents/searching.html)

Patent Tutorial

[www.lib.ncsu.edu/ptdl/patents
/searches2.html](http://www.lib.ncsu.edu/ptdl/patents/searches2.html)

URLS

ERIC

[www.lib.ncsu.edu/distance/instruction
/eric/](http://www.lib.ncsu.edu/distance/instruction/eric/)

Dog Quiz

quiz.ivillage.com/pets/tests/dogs.htm

GIS data wizard

[www.lib.ncsu.edu/stacks/gis/datawiz.
html](http://www.lib.ncsu.edu/stacks/gis/datawiz.html)

LOBO2 - Microsoft Internet Explorer

Address http://www.lib.ncsu.edu/lobo2/using/cite/cite1.html

LOBO Library Online Basic Orientation @ NC State

About LOBO | View Worksheet | Ask A Librarian

Page 2 of 11

The Research Process

- Defining Research Needs
- Developing A Research Strategy
- Conducting the Search
- Evaluating Resources
- Using Resources
 - Understand Plagiarism
 - Integrate Your Research
 - Cite Your Sources
 - Citation Builder
- Need Help?
- Table of Contents
- LOBO Home Page


Cite Your Sources

When & How to Cite Your Sources

You must cite a source when you are quoting **someone else's words** or you are quoting **someone else's ideas**.

← cite **thesis ideas** and **common knowledge**.

Confused? Return to [Understand Plagiarism](#).



Within your paper, you'll need format two kinds of citations

Page 2 of 11

Copyright | Disclaimer

Last Modified: 2003-08-18
 Questions/Comments to [LibWebTeam](#)
 URL: http://www.lib.ncsu.edu/lobo2/using/cite/cite1.html

11:53 AM

Modular structure facilitates navigation.

LOBO2 - Defining Research Needs - Microsoft Internet Explorer

Address http://www.lib.ncsu.edu/lobo2/needs/understand3.html

LOBO Library Online Basic Orientation @ NC State

About LOBO | View Worksheet | Ask A Librarian

Page 3 of 4

The Research Process

- Defining Research Needs
 - Understand Your Assignment
 - Differences Between Resource Types
- Developing A Research Strategy
- Conducting the Search
- Evaluating Resources
- Using Resources
- Need Help?
- Table of Contents
- LOBO Home Page

Defining Research Needs

Understand the Assignment - Your Intended Audience

Find out who will actually view the finished version of your assignment. Your **instructor** will be required to assume that others--your **classmates** or a fictional **audience**--will

Consider **what your audience already knows about your topic**. Your work may **attitudes or biases** toward your topic.

Who is the audience for your assignment?

What does your audience already know? What biases might they have?

ADD TO WORKSHEET

Page 3 of 4

Ask a Librarian | Copyright | Disclaimer

Last Modified: 2003-08-18
 Questions/Comments to [LibWebTeam](#)

11:56 AM

Questions prompt students to analyze, synthesize, and evaluate based on actual assignments.

The Research Process – Manage Your Time

Use the Assignment Calculator to plan the work for one of your assignments.

1.3.1 What is the name of the assignment?
ENG 101 Literature Review

1.3.2 What is the date today?
September 15, 2003

1.3.3 When is your assignment due?
October 7, 2003

According to the Assignment Calculator...

1.3.4 When should you have chosen your topic?
Sept 17

1.3.5 When should you begin finding books/articles/web sites?

1.3.6 When should you make an outline?

1.3.7 When should you write your first draft?

Defining Research Needs – Understand Your Assignment

2.1.1 What important verbs are included in the description of your assignment that indicate how you should approach your topic?

Answers to interactive questions are transferred to a printable worksheet.

LOBO2 - Keyword Builder - Microsoft Internet Explorer

Address: http://www.lib.ncsu.edu/lobo2/rstrategy/keyword_builder2.html

LOBO2: Make a Boolean Search - Microsoft Internet Explorer

Keyword Builder: Make a Boolean Search

Enter search terms:

<p>Concept 1</p> <input type="text" value="women"/> <input type="text" value="female"/> <p>↑ OR ↓</p>	<p>AND</p>	<p>Concept 2</p> <input type="text" value="college"/> <input type="text" value="university"/> <p>↑ OR ↓</p>	<p>AND</p>	<p>Concept 3</p> <input type="text" value="athletics"/> <input type="text" value=""/> <p>↑ OR ↓</p>
---	------------	---	------------	---

Create Search

Your Boolean search looks like this:

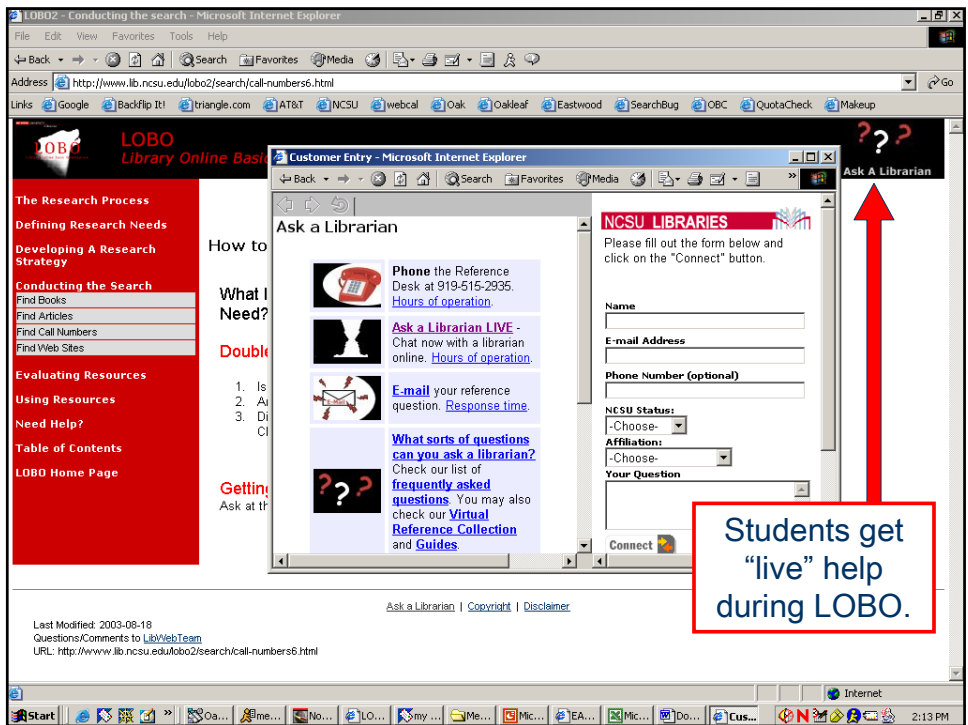
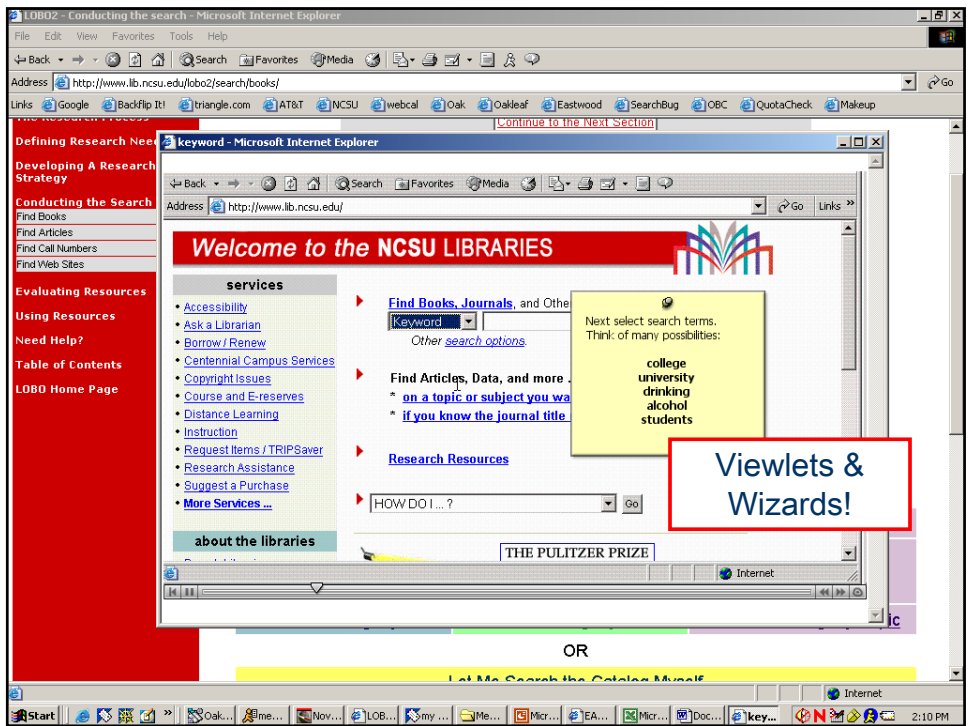
(women OR female) AND (college OR university) AND athletics

Interactive elements include Keyword and Citation Builders...

© 2002 NC State University
[Disclaimer](#)

KEYWORD

The **Keyword Builder** demonstrates how these concepts can be combined using **AND**. Click on the Keyword Builder, then click the "Create Search" button. Notice how **women**, **college**, and **athletics** are combined into a **search string**.



Elements of LOBO

- ◆ Carbon Viewlet Builder makes a shockwave flash file that is readable in most browsers
- ◆ Worksheet is built using cookies and is not retained when the browser closes.
- ◆ Chat is staffed until midnight 4 nights a week.
- ◆ Passive viewlet demo, guided search, or simulation are all available

Welcome to NCSU Libraries
Patent and Trademark Depository Library

Introduction
General Questions About Patents
How to Search for Patents
Can I do this at home?
Before you visit us...
Databases, Print Guides and Web Sites

Patent Searching

Patent searching varies in complexity, based on your particular needs. If you are searching for a "known" patent, for example, you have a patent number already, or you are looking for something your grandfather invented, or you want a list of everything Ocean Spray has ever invented, you can do this relatively easy on the USPTO web site. If, however, you are an inventor, looking to see if anyone has claims to a similar patent, you can expect hours of searching. **Read this before beginning your patent search.**

Please select the option that is closest to your question.

REMEMBER:

- All patents ever issued are in the USPTO web database. However, only patents issued from 1976- now are available in full text. **The only way to search online for patents issued before 1976 is either by patent number, or by Classification Code.**
- To see the full patent image, you must have a TIFF viewer installed on your PC. To get one, go to <http://www.alternatiff.com> and intall the TIFF viewer plug-in.



Caution!

**Tutorials tied to database
interfaces are very time-
intensive to maintain!**



WIZARDS

What is a Wizard and how
could it be useful?

"Quiz yourself!"

What kind of dog would you be?

by Jennifer Degtjarewsky



If your personality traits were matched to a particular breed of dog, which would you resemble? Take our quiz for fun and find out.



[send this quiz to a friend](#)



[see all quizzes](#)

- 1. You are working hard on a project that is due tomorrow. Unannounced, a group of friends appear at your doorstep. You:**
 - Welcome them in and forget my project
 - Order out for pizza, delegate duties and ask them to help with my project
 - Invite them in and put on a pot of coffee, secretly worrying about how late I will be up finishing my project
 - Pretend I am not home
 - Answer the door, but let them know I am working and it is not a good time for a visit
- 2. How much work do you put into your hair?**
 - A wash and blow-dry have me ready to go
 - I run my fingers through it and go
 - My hair is out of control; I have to work hard to keep it presentable
 - A set and comb at the beauty shop keeps me going for a week

Why use a wizard?

A guide would be too complex

- ◆ Array of choices to make
- ◆ Complex assortment of resources

Tutorials require investment

- ◆ Not trying to build step-by-step skills
- ◆ No captive audience

One Possible use....

GIS DATA

- ◆ User has specific format, date and geography requirements
- ◆ Complex array of available data with various restrictions
- ◆ Users may need data features explained
- ◆ Frequent request

I need orthophoto data:

- 1990-2000 data
- Wake County, NC
- A certain projection type
- Available online immediately
- NCSU affiliate

Upkeep Issues

- ◆ External links are persistent object identifiers

Legislative History Wizard

- ◆ Resources have varied access points
- ◆ Resources provide different types of information
- ◆ Dates matter
- ◆ What your institution owns or can access matters



A Legislative History Wizard

What the user might know:

- ◆ PL # or Bill # and Congress #
- ◆ Common or proper name

What the user might want:

Background reports, roll call votes, hearing testimony, bill text, floor debate, signing statements, etc.

Access	Provides	Start Date	End Date	Title
1	1	1790	present	
1, 2	1,2	1799	1873	
2, 3	1,2	1819	1873	
1, 4	2,3,4	1970	present	



Govt Information Tutorials and Wizards

What are our opportunities for collaboration?



Some possibilities...

- ◆ Finding longitudinal census data for small geographies
- ◆ Training our docs assistants
- ◆ Training new librarians in a combined depts situation
- ◆ Or...?