



Depository Library Conference

October 15, 2001

U.S. Department of the Interior
U.S. Geological Survey

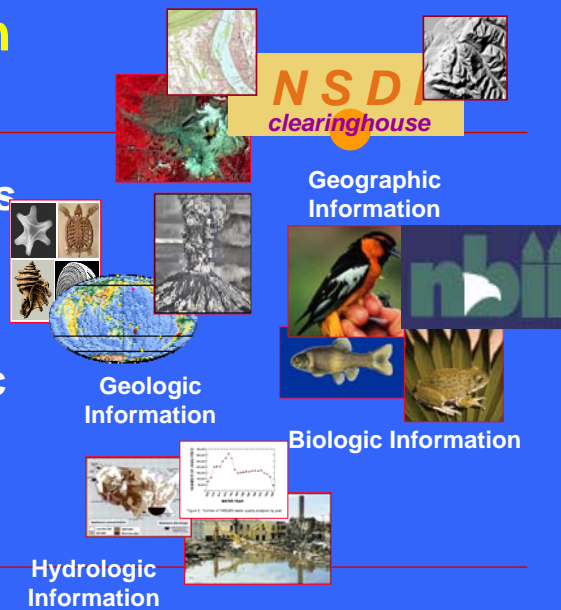
Additional Web Sites

- www.usgs.gov/education
 - biology.usgs.gov/features/kidscorner/kidscorner.html
 - www.usgs.gov/earthscience
 - earthquake.usgs.gov
 - Volcanoes.usgs.gov
-



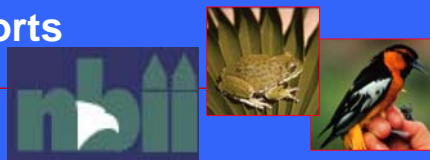
USGS Mission

The USGS serves the Nation by providing reliable scientific information



Biological Resources

- Web site: <http://biology.usgs.gov>
- Programs - Support the sound management and conservation of our Nation's biological resources.
- Publications - Status and Trends of the Nation's Biological Resources, Biological Science Reports and Information Technology Reports

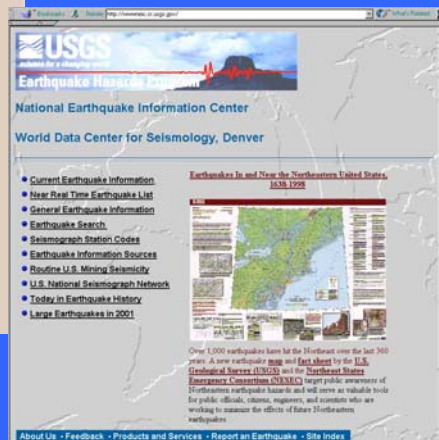


Geology

- Web Site: <http://geology.usgs.gov>
- Science Programs:
 - Geologic Hazards, Landscapes and Coasts, and Earth Resources
- Publications: Formal and Informal Series
 - Fact Sheets, Professional Papers, General Interest Publications, Digital Data Series, Thematic Maps, Open File Reports, New Publications Of the USGS
- National Geologic Map Database



geohazards.cr.usgs.gov/earthquake.html

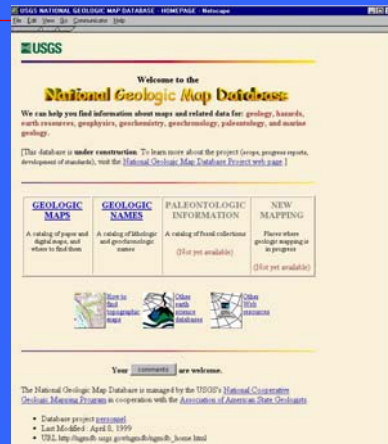


www.nieic.cr.usgs.gov/



Geologic Map Database

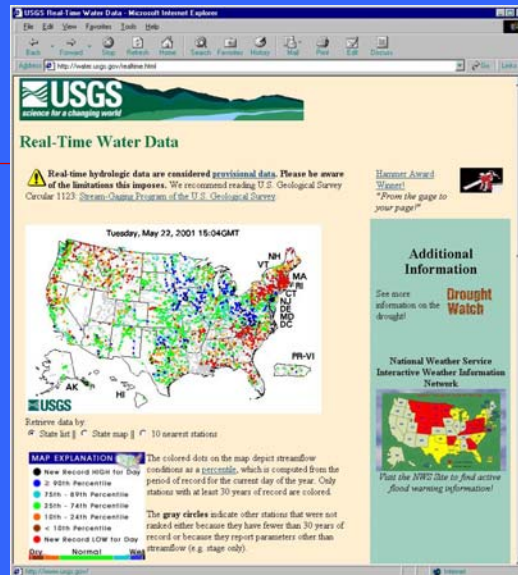
URL:
<http://ngmdb.usgs.gov/>



Water Resources

- Web Site: <http://water.usgs.gov>
- Water Programs: State, Regional and National – Quantity, Quality, Ground
- Water Data: On-line - Streamflow, Water Quality, Water Use, Flood Tracking
- Publications: Water Supply Papers, Fact Sheets, Posters, TWRI, WRIR





water.usgs.gov/realtime.html



National Mapping

- Web site - <http://mapping.usgs.gov>
- Programs:
 - Cooperative Topographic Mapping
 - Land Remote Sensing
 - Landscape Analysis



Geographic Information



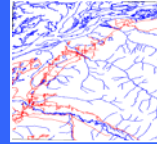
Topographic Maps



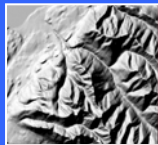
Ortho Imagery



Raster Graphics



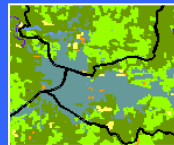
Vectors



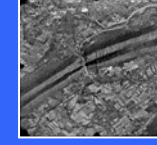
Elevation



Satellite
Imagery



Land Cover
Characterization



Aerial
Photography



The National Map

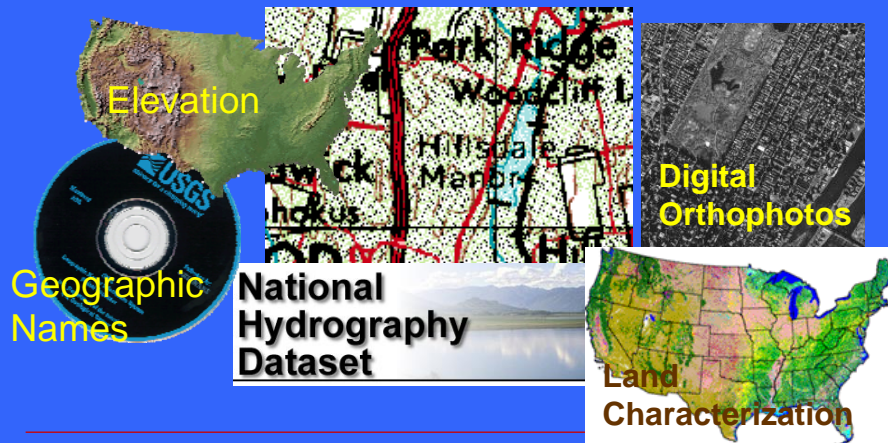
- Over the next 10 yrs we, together with our partners, will implement a revision strategy that provides information to our customers where currentness is measured in weeks, rather than years or decades.
- <http://nationalmap.usgs.gov>



Where We Were



Where We are Going - Seamless



Information Access

- Web URL: <http://www.usgs.gov>
- Information Services – 1-888-ASK-USGS
- USGS Library <http://library.usgs.gov>



<http://www.usgs.gov>



ask.usgs.gov/

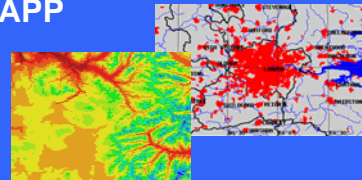


Earth Explorer

■ Earthexplorer@usgs.gov

☛ Over 60 Datasets Represented

- ◆ Landsat, AVHRR, DLG's, DEM's, DRG's, DOQ's,
- ◆ Paper Maps: topo quads, Forest Service Visitor Maps
- ◆ Aerial Photography: NAPP



USGS

Data Sets Prices Profile Track Orders Saved Criteria Saved Results Standing Requests Help Logout

EarthExplorer: Data Set Selection

Spatial Coverage

Define on Map Click on a coordinate before pressing the "Edit" button.

Enter Coordinates

Enter Place Name

Data Set Selection (Note: Click on a category to view data sets.)

- Aerial Photography
- Digital Line Graphs
- Elevation
- Maps
- Satellite Imagery
 - Advanced Very High Resolution Radiometer
 - Corona Satellite Photography

[Continue](#)

Data Sets Prices Profile Track Orders Saved Criteria Saved Results Standing Requests Help Logout

U.S. Department of the Interior, U.S. Geological Survey
 Maintainer: earthexplorer@esd.com or usgs.gov
 Last Modified: 23 February 2001
 USGS Privacy Policy and Disclaimers

FIRSTGOV
Your First Click to the U.S. Government

Spatial Coverage



Mapping Programs

The National Atlas of the United States

National Atlas of the United States

1987 Edition

What's New The 1987 Edition of the National Atlas of the United States is a landmark publication. It is the first atlas to present a complete and up-to-date picture of the United States and its people. It is the first atlas to present a complete and up-to-date picture of the United States and its people. It is the first atlas to present a complete and up-to-date picture of the United States and its people.






http://nationalatlas.gov/index.html

USGS

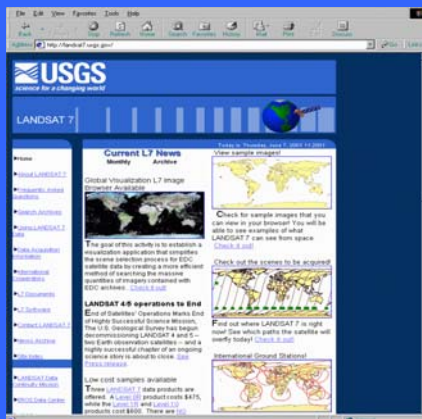
Geographic Names Information System



- Official repository of domestic geographic feature names information.
- Contains over 2 million feature names.
- Names are tied to feature locations.
- Geonames.usgs.gov



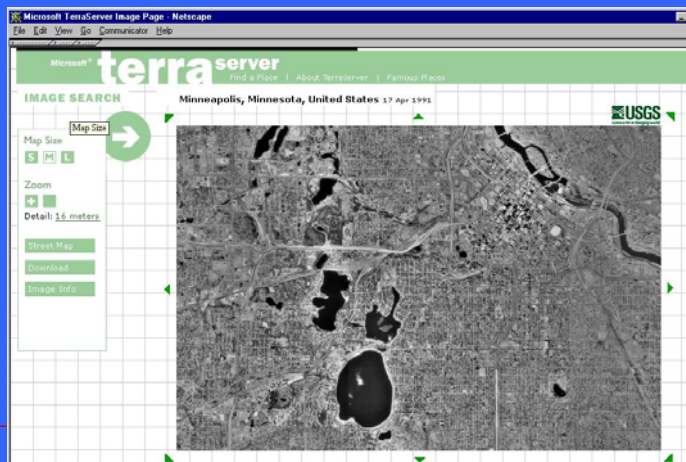
http://landsat7.usgs.gov



New York, NY Landsat 7 Image



TerraServer (URL: <http://terraserver.microsoft.com/>)



Rea Mueller
U.S. Geological Survey
517 National Center
Reston VA 20192
Phone: 703-648-5954
FAX: 703-648-5939
E-mail: rlmueller@usgs.gov

