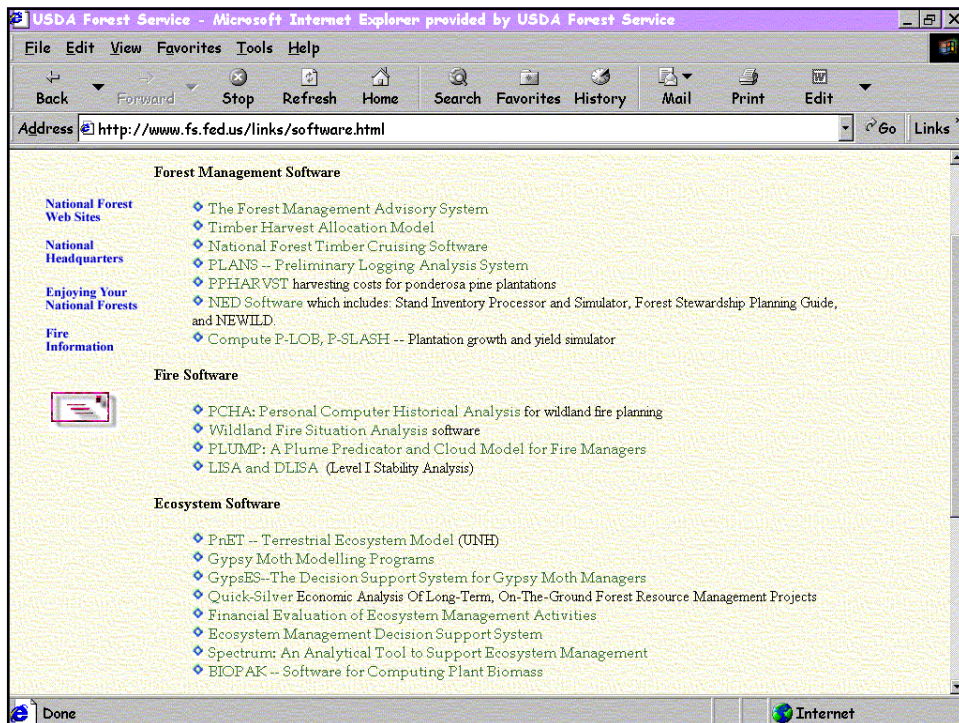
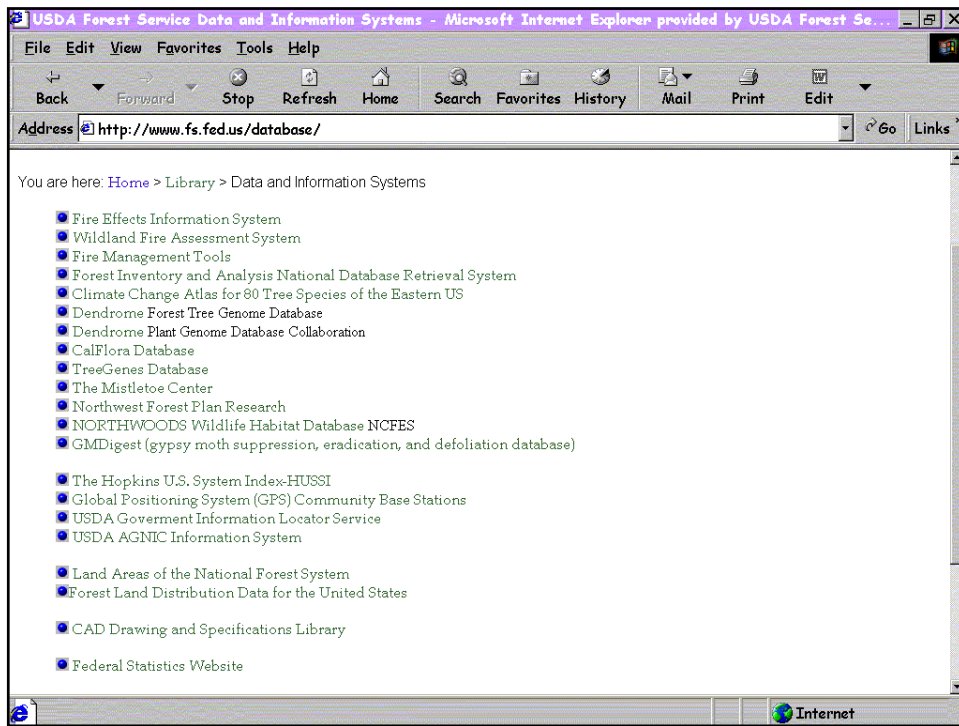
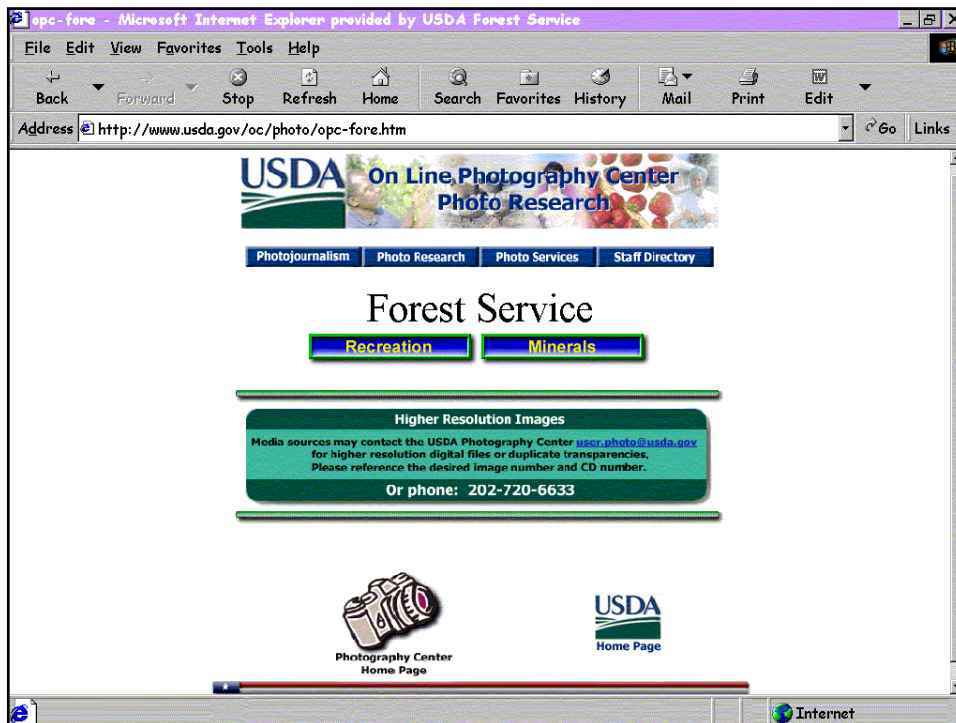
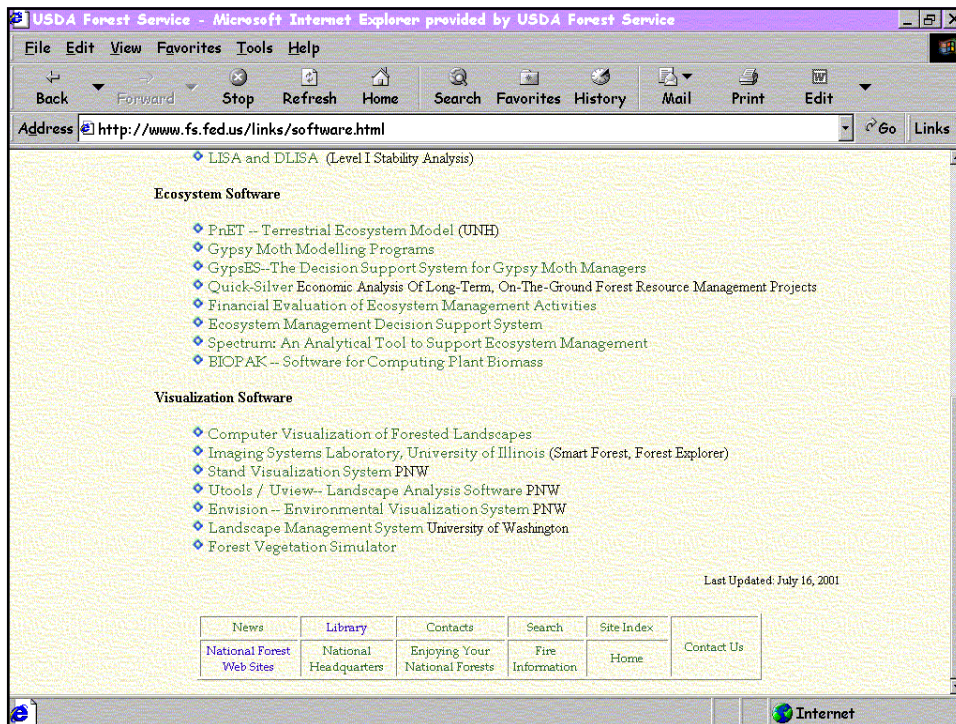


# Forest Service Publications

- Washington Office
    - Report of the FS
    - Land areas of the NFS
    - FS
    - Magazines
      - Natural Inquirer**
      - Fire Management Notes**
      - Tree Planters Notes**
  - Research Stations
    - General technical report
    - Research note
    - Research paper
    - Resource bulletin
    - Proceedings**
  - National Forest System
    - Standardized series only in Alaska Region and Southern Region
    - Miscellaneous
  - State & Private Forestry
    - Forest insect & disease leaflet
    - Biological evaluation
    - Technical report
    - Other series vary
  - Technology & Development Centers
    - [nnnn nnnn]-SDTDC
    - [nnnn nnnn]-MTDC








USDA Forest Service National Video Library - Microsoft Internet Explorer provided by USDA Forest Service

File Edit View Favorites Tools Help

Back Forward Stop Refresh Home Search Favorites History Mail Print Edit

Address <http://www.r5.fs.fed.us/video/> Go Links

National Headquarters

Home > Library > National Video Library

News & Issues Programs & Staffs Library Publications Contacts Search Site Index Home

<p><b>USDA Forest Service</b> General, Careers &amp; Volunteer Opportunities, History</p> <p><b>Cultural Resources</b> General</p> <p><b>Fire</b> Fighting, Training, Management, Smokey Bear and Prevention, History</p> <p><b>Wilderness</b> General, History</p> <p><b>Recent Additions</b> New Videos</p>	<p><b>Ecosystems</b> General Ecosystem Management, Environmental Education</p> <p><b>Natural Resources</b> Timber, Mining and Geology, Range and Watershed, History</p> <p><b>Recreation</b> General Opportunities, Places and Events, Safety</p> <p><b>Wildlife</b> General</p> <p><b>Stock Footage</b> Index of Videos</p>	<p><b>It's Free!</b></p> <p>This is a free-loan lending library system. The only cost to you is the return postage. All videos are available on VHS format and there is a 10-tape limit.</p> <p>Audience Planners, Inc. distributes the Forest Service free-loan videotape library. Write, call, or fax Audience Planners at the address below, with the name(s) of the videotapes you wish to borrow and the requested play date.</p> <p><b>Forest Service Video Library</b> c/o Audience Planners 6341 Berry Ave. Suite Q Agoura Hills, CA 91301 Phone:(800) 683-8366 Fax: (818) 865-1327</p>
-----------------------------------------------------------------------------------------------------------------------------------------------------------------------------------------------------------------------------------------------------------------------------------------------------------------------------------	--------------------------------------------------------------------------------------------------------------------------------------------------------------------------------------------------------------------------------------------------------------------------------------------------------------------------------------------------	---------------------------------------------------------------------------------------------------------------------------------------------------------------------------------------------------------------------------------------------------------------------------------------------------------------------------------------------------------------------------------------------------------------------------------------------------------------------------------------------------------------------------------------------------------------------------------------------------------------------

Last modified: 01/22/2001

Select Topic

Internet

Forest Land Distribution Data for the United States - Microsoft Internet Explorer provided by USDA Forest Service

File Edit View Favorites Tools Help

Back Forward Stop Refresh Home Search Favorites History Mail Print Edit

Address <http://www.srs.fia.usfs.msstate.edu/rpa/rpa93.htm> Go Links

## Forest Land Distribution Data for the United States

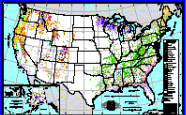
---

### General Information

- [Background information](#)
- [Data README file and disclaimer](#)
- [Forest density mapping in the lower 48 states: a regression procedure - \(PDF 858KB\)](#)

### Data and Metadata

- Forest type group data
  - [Larger Forest Type Group map](#) is available in PDF (604KB) for greater viewing detail or printing
  - Continental United States
    - [Metadata record](#)
    - [Generic raster file for the contiguous U.S. forest type groups map](#) (12658 KB)
  - Alaska
    - [Metadata record](#)
    - [Generic raster file for the Alaska forest type groups map](#) (7310 KB)
  - Hawaii
    - [Metadata record](#)
    - [Generic raster file for the Hawaii forest type groups map](#) (234 KB)



Internet

# Where To Go for USDA Forest Service Products

Carol A. Ayer  
U.S. Forest Service  
Ogden, UT

---

## Publications (Print & Electronic)

Currently, there is no centralized WWW access to FS publications. One-stop shopping access to Research & IITF publications is under development. In the meantime, contact the Forest Service units listed below for their respective publications.

International Forestry (WO, IITF)  
State & Private Forestry (NEA, R-1, R-2, R-3, R-4, R-5, R-6, R-8, R-10)  
Research (WO, FPL, NC, NE, PNW, PSW, RMRS, SRS)  
Regions (WO, R-1, R-2, R-3, R-4, R-5, R-6, R-8, R-9, R-10)

## Databases

[www.fs.fed.us/database](http://www.fs.fed.us/database)  
Individual units

## Software

*Categories: Forest management, Fire, Ecosystem, Visualization*

[www.fs.fed.us/links/software.html](http://www.fs.fed.us/links/software.html)

## Photographs

[www.usda.gov/oc/photo/opc-fore.htm](http://www.usda.gov/oc/photo/opc-fore.htm)

## Videos

[www.r5.fs.fed.us/video](http://www.r5.fs.fed.us/video)

## Maps

Forest inventory maps: [www.srsfia.usfs.msstate.edu/rpa/rpa93.htm](http://www.srsfia.usfs.msstate.edu/rpa/rpa93.htm)  
Forest maps: R-1, R-2, R-3, R-4, R-5, R-6, R-8, R-9, R-10

Members of the Forest Service Library Network are more than willing to provide assistance to other libraries. Contact the FS library nearest you.

Federal Depository Library Conference, Fall 2001

**Forest Service Libraries**

FPL Library  
Forest Products Laboratory  
One Gifford Pinchot Drive  
Madison, WI 53705-2398  
jblankenburg@fs.fed.us  
608-231-9491

Juneau FS Library  
Forestry Science Laboratory  
2770 Sherwood Lane, Suite 2A  
Juneau, AK 99801-8545  
fsinfoak@ptialaska.net  
907-586-8811

NC Library  
North Central Research Station  
1992 Folwell Avenue  
St. Paul, MN 55108  
lhutchinson@fs.fed.us  
651-649-5272

NE Library  
Northeastern Research Station  
& Northeastern Area State & Private Forestry  
359 Main Road  
sdew@fs.fed.us  
740-368-0124

PSW Library & Information Center  
Pacific Southwest Research Station  
1323 Club Drive  
Vallejo, CA 95492  
ppepin@fs.fed.us  
707-562-8670

RMRS Library  
Rocky Mountain Research Station  
324 25<sup>th</sup> St.                      240 W. Prospect St.  
Ogden, UT 84401  
rmrs\_library@fs.fed.us  
801-625-5444 (Utah)  
970-498-1205 (Colorado)  
Fort Collins, CO 80526

INFO Tropics Library  
International Institute of Tropical Forestry  
P.O. Box 25000  
Rio Piedras, PR 00928-2500  
greyes@fs.fed.us  
787-766-5335

ABBREVIATIONS			
FPL	Forest Products Laboratory	Region 1 (R-1)	Northern Region
IITF	International Institute of Tropical Forestry	Region 2 (R-2)	Rocky Mountain Region
NC	North Central Research Station	Region 3 (R-3)	Southwestern Region
NE	Northeastern Research Station	Region 4 (R-4)	Intermountain Region
NEA	Northeastern Area State & Private Forestry	Region 5 (R-5)	Pacific Southwest Region
PNW	Pacific Northwest Research Station	Region 6 (R-6)	Pacific Northwest Region
PSW	Pacific Southwest Research Station	Region 8 (R-8)	Southern Region
RMRS	Rocky Mountain Research Station	Region 9 (R-9)	Eastern Region
SRS	Southern Research Station	Region10 (R-10)	Alaska Region

Federal Depository Library Conference, Fall 2001

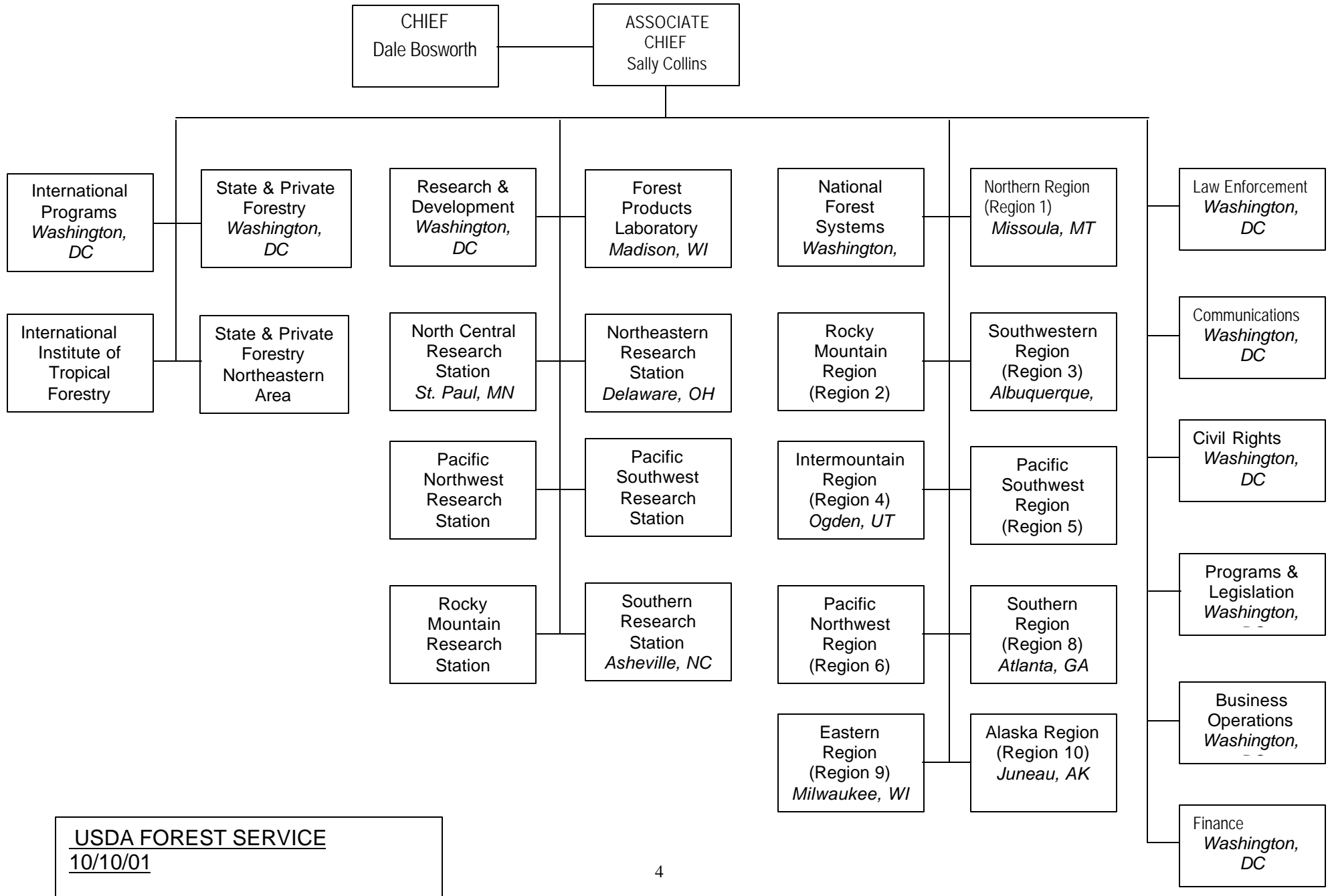
**USDA Forest Service**  
P.O. Box 96090  
Washington, DC 20090-6090  
202-205-8333

Washington, DC:

International Programs	<a href="http://www.fs.fed.us/global">http://www.fs.fed.us/global</a>	202-273-4695
State & Private Forestry	<a href="http://www.fs.fed.us/spf">http://www.fs.fed.us/spf</a>	202-205-1657
Research & Development	<a href="http://www.fs.fed.us/research">http://www.fs.fed.us/research</a>	202-205-1665
National Forest System	<a href="http://www.fs.fed.us/pages/nfs.html">http://www.fs.fed.us/pages/nfs.html</a>	202-205-1523
Law Enforcement & Invest.		703-605-4690
Office of Communications	<a href="http://www.fs.fed.us/news/news.html">http://www.fs.fed.us/news/news.html</a>	202-205-1273
Civil Rights	<a href="http://www.fs.fed.us/cr">http://www.fs.fed.us/cr</a>	202-205-1585
Programs & Legislation	<a href="http://www.fs.fed.us/program-legislation.html">http://www.fs.fed.us/program-legislation.html</a>	202-205-1663
Business Operations	<a href="http://www.fs.fed.us/pages/business-ops.html">http://www.fs.fed.us/pages/business-ops.html</a>	202-205-1707
Office of Finance		202-205-1784

International Institute of Tropical Forestry Call Box 25000 Rio Piedras, PR 00928-5000 <a href="http://www.fs.fed.us/global/iitf">http://www.fs.fed.us/global/iitf</a> 787-766-5335	Northern Region P.O. Box 7669 Missoula, MT 59807 <a href="http://www.fs.fed.us/r1">http://www.fs.fed.us/r1</a> 406-329-3316
State & Private Forestry, Northeastern Area 11 Campus Drive Newtown Square, PA 19073 <a href="http://www.na.fs.fed.us">http://www.na.fs.fed.us</a> 610-557-4200	Rocky Mountain Region P.O. Box 25127 Lakewood, CO 80225 <a href="http://www.fs.fed.us/r2">http://www.fs.fed.us/r2</a> 303-275-5450
Forest Products Laboratory One Gifford Pinchot Drive Madison, WI 53705-2898 <a href="http://www.fpl.fs.fed.us">http://www.fpl.fs.fed.us</a> 608-231-9200	Southwestern Region 517 Gold Avenue Albuquerque, NM 87102 <a href="http://www.fs.fed.us/r3">http://www.fs.fed.us/r3</a> 505-842-3292
North Central Research Station 1992 Folwell Avenue St. Paul, MN 55108 <a href="http://www.ncrs.fs.fed.us">http://www.ncrs.fs.fed.us</a> 651-649-5249	Intermountain Region 324 25th Street Ogden, UT 84401 <a href="http://www.fs.fed.us/r4">http://www.fs.fed.us/r4</a> 801-625-5605
Northeastern Research Station 11 Campus Boulevard Newtown Square, PA 19073 <a href="http://www.fs.fed.us/ne">http://www.fs.fed.us/ne</a> 610-557-4017	Pacific Southwest Region 1323 Club Drive Vallejo, CA 94592 <a href="http://www.r5.fs.fed.us">http://www.r5.fs.fed.us</a> 707-562-8737
Pacific Northwest Research Station P.O. Box 3890 Portland, OR 97208-3890 <a href="http://www.fs.fed.us/pnw">http://www.fs.fed.us/pnw</a> 503-808-2592	Pacific Northwest Region P.O. Box 3623 Portland, OR 97208-3623 <a href="http://www.fs.fed.us/r6">http://www.fs.fed.us/r6</a> 503-808-2202
Pacific Southwest Research Station P.O. Box 245 Berkeley, CA 94701-0245 <a href="http://www.psw.fs.fed.us">http://www.psw.fs.fed.us</a> 510-559-6300	Southern Region 1720 Peachtree Road NW Atlanta, GA 30309 <a href="http://www.southernregion.fs.fed.us">http://www.southernregion.fs.fed.us</a> 404-347-4177
Rocky Mountain Research Station 2150 Center Avenue Fort Collins, CO 80526 <a href="http://www.fs.fed.us/rm">http://www.fs.fed.us/rm</a> 970-295-5926	Eastern Region 310 West Wisconsin Avenue, Room 580 Milwaukee, WI 53203 <a href="http://www.fs.fed.us/r9">http://www.fs.fed.us/r9</a> 414-297-3765
Southern Research Station P.O. Box 2680 Asheville, NC 28802 <a href="http://www.srs.fs.fed.us">http://www.srs.fs.fed.us</a> 828-257-4300	Alaska Region P.O. Box 21628 Juneau, AK 99802-1628 <a href="http://www.fs.fed.us/r10">http://www.fs.fed.us/r10</a> 907-586-8863

Federal Depository Library Conference, Fall 2001



USDA FOREST SERVICE  
10/10/01