

Census 2000 Data Products



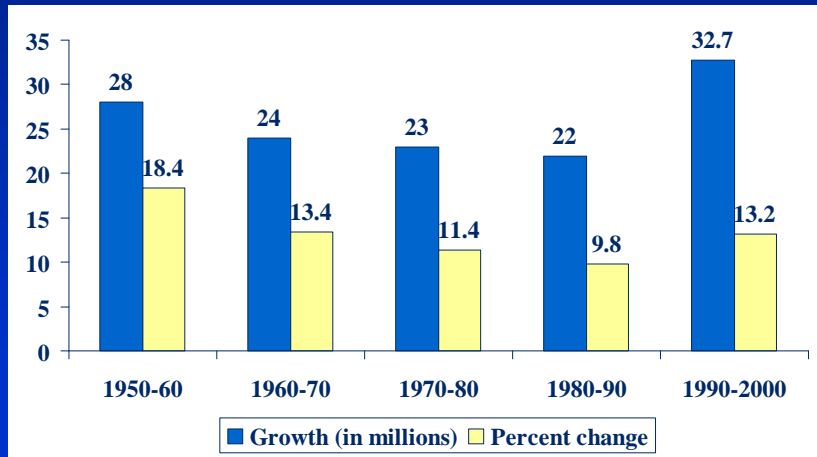
USCENSUSBUREAU

On Census Day, April 1, 2000, the
U.S. resident population was
281,421,906



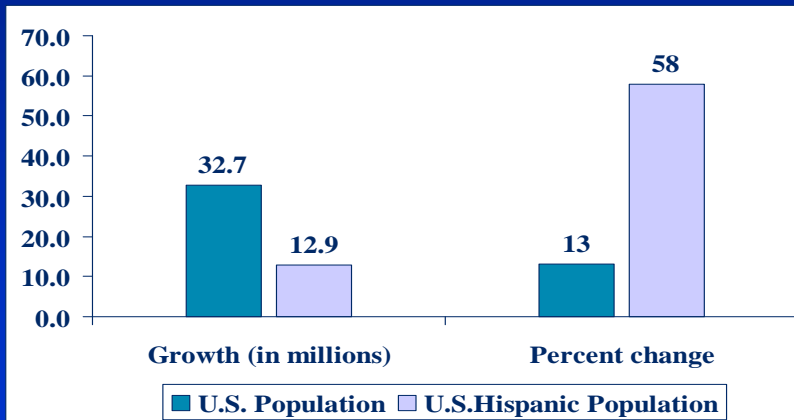
USCENSUSBUREAU

U.S. Population Growth: 1950-1960 to 1990-2000



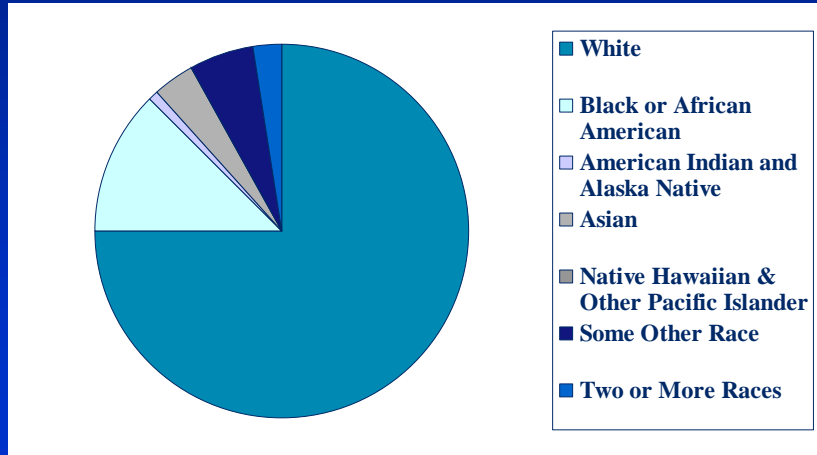
USCENSUSBUREAU

U.S. Population Growth: 1990-2000



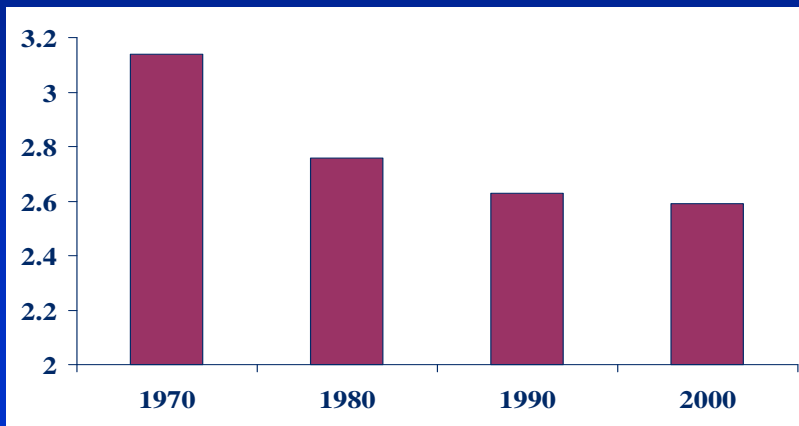
USCENSUSBUREAU

Population by Race: 2000



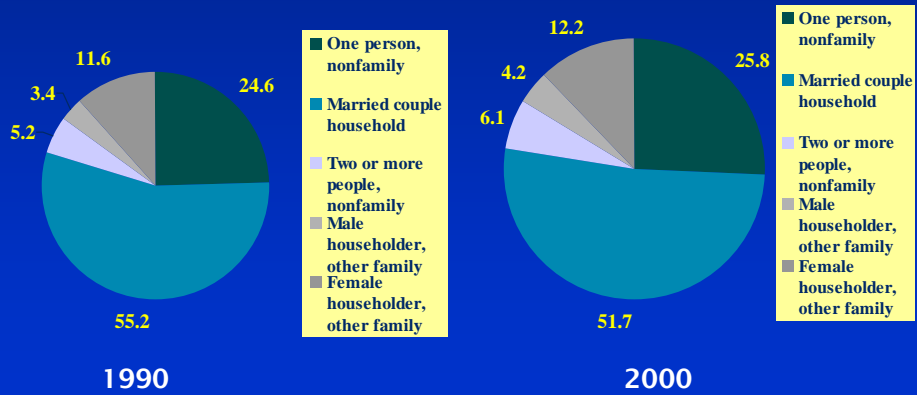
USCENSUSBUREAU

Average Household Size: 1970-2000



USCENSUSBUREAU

Households by Type and Size: 1990-2000



USCENSUSBUREAU

Census 2000 Products

Census 2000 data will be released in a variety of formats, media, and detail.

USCENSUSBUREAU

**Yes,
Grace/Mary/Robin/Andrea/Betty
there will be printed reports from
Census 2000.**

USCENSUSBUREAU

Major Product Lines

- **Products: Summary Files, Profiles, Quick Tables, Geographic Comparison Tables, printed reports, maps, microdata**
- **Media: Internet, CD-ROMs, DVDs, publications**
- **Formats: ASCII, PDF, custom, other**

USCENSUSBUREAU

Media

- Internet
- CD-ROM/DVD
- Paper

USCENSUSBUREAU

Internet

- Data released first on American FactFinder
- Community profiles available under QuickFacts
- Printed reports available in Portable Document Format (PDF)
- Maps available in Portable Document Format (PDF)
- Download (FTP) options

USCENSUSBUREAU

The screenshot shows the Netscape browser window titled "Census Bureau Home Page - Netscape". The address bar shows "http://www.census.gov/". The main content area features the "U.S. Census Bureau" logo and the text "United States Department of Commerce". A prominent banner reads "Census 2000 Data Now Available" with a "Click Here" button. Below this, there are several navigation categories: "Subjects A to Z" (A-Z), "New on the Site", "Search", "American FactFinder", "Access Tools", "Catalog", "Publications (PDF)", "Jobs@Census", "About the Bureau", and "Related Sites". The central section lists "Census 2000" data categories: "People" (Estimates, Projections, International, Income, Poverty, Genealogy, State Profiles, Housing, More), "Business" (Economic Census, Government, E-State, NAICS, Foreign Trade, More), "Geography" (Maps, TIGER, Gazetteer, More), "News" (Releases, Minority Links, Radio/TV/Photo Services, More), and "Special Topics" (Conversations with America, For Teachers, American Community Survey, Statistical Abstract, FedStats). On the right side, there is a "State and National Data for 2000" section with "Population Clocks" showing "U.S. 284,851,797" and "World 6,165,639,389" as of "11:44 EDT Aug 09, 2001". Below that is "State & County QuickFacts" with a dropdown menu set to "Alabama" and a "Go!" button. At the bottom right, there are links for "Latest Economic Indicators" and "Wholesale Inventory/Sales".

The screenshot shows the Netscape browser window titled "American FactFinder - Netscape". The address bar shows "http://www.census.gov/factfinder". The main content area features the "U.S. Census Bureau" logo and the "American FactFinder" logo. A navigation bar includes "Main | Search | Feedback | FAQs | Help". A search box is labeled "Search" and has options for "keyword" (selected) and "place name". Below the search box is a "Go" button. A "Site Tour" sidebar on the left lists: "Site Tour", "What's in FactFinder", "Confidentiality", "What's New", "Products", "Reference Maps", "Thematic Maps", "Data Sets", "Censo 2000 Puerto Rico en español", and "Kids' Corner". The main content area is titled "Your source for population, housing, economic and geographic data." and features a "start with Basic Facts" section. This section has radio buttons for "Tables" (selected) and "Maps", and a "Show me" dropdown menu set to "Age and Sex". Below this is a "for" dropdown menu set to "the United States" and a "Go" button. Links for "Census 2000 Release Schedule" and "American Community Survey Data" are provided. The "Items of Interest" section includes "Census 2000 Population Data" (Population counts for each state will be delivered to the President by December 31), "Census 2000 Questionnaires" (Questions we asked and why), and "1997 Economic Census" (Just released: Economic-Wide Key Statistics: 1997). The "FactFinder Data Sources" section includes "The Decennial Census" (collects data every 10 years about households, education, income, homeownership and more), "The Economic Census" (profiles the U.S. Economy every 5 years, from the national to the local level), and "The American Community Survey (ACS)" (a survey conducted by the U.S. Census Bureau that provides profiles of selected communities every year). The footer contains links: "Census 2000 | Subjects A to Z | Search | Product Catalog | Data Access Tools | FOIA | Privacy Policies | Contact Us | Home".

CD-ROM / DVD

- Redistricting Summary File and 4 series of detailed tables similar to 1990 STFs
- Profiles, Quick Tables, Geographic Comparison Tables, and printed reports (PDF)
- Maps (PDF)
- Access software
- Formats

USCENSUSBUREAU

Paper

- Printed reports
- Maps
- Print on demand

USCENSUSBUREAU

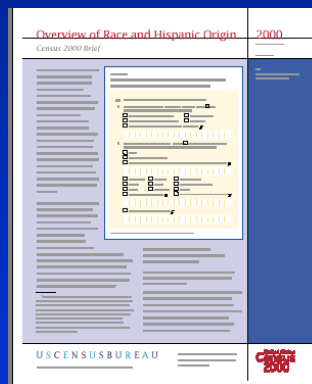
Paper

- 3 Series of printed reports
- Summary Population and Housing Characteristics
 - Summary Social, Economic and Housing Characteristics
 - Population and Housing Unit Totals

USCENSUSBUREAU

Paper

Census Briefs



USCENSUSBUREAU

The Census Questionnaire

100% data or
short form:

7 questions

Sample data or
long form:

34 topics



USCENSUSBUREAU

What Data Will Be Available?

100% data or short-form information

- Redistricting Summary File
- Summary File 1
- Summary File 2

Sample data or long-form information

- Summary File 3
- Summary File 4

USCENSUSBUREAU

Redistricting Summary File

- Total population and 18-and-over population by 63 race categories and Hispanic/Latino
- Lowest level of geography: block
- 1 or more CDs per state; 3 DVDs
- Race and Hispanic or Latino Summary File (National File)

USCENSUSBUREAU

100 Percent Summary Files

Summary File 1 (SF1)

- Counts and cross tabulations
- Counts for detailed race, Hispanic or Latino groups, and American Indian/Alaska Native tribes
- About 300 tables
- Tables repeat (A-I) for major race groups alone, two or more races, Hispanic or Latino, White not Hispanic or Latino
- Geography: block, census tract

USCENSUSBUREAU

SF1 Subject Content

171 Population tables (P) at the block level
56 Housing tables (H) at the block level
59 Population tables (PCT) at the census tract level

286 Tables

USCENSUSBUREAU

SF1 Releases

Individual files

- 50 States
- District of Columbia
- Puerto Rico

United States

USCENSUSBUREAU

Geographic Levels - State Files

State
 County
 Place (or place part)
 Census tract
 Block group
 Block

- State portion of American Indian and Alaska Native Area (with trust lands and with no trust lands) and Hawaiian homeland
- Inventory records: place, census tract, block group, congressional district (106th Congress), consolidated city, metropolitan area and ZIP Code tabulation area (ZCTA)

USCENSUSBUREAU

Geographic Levels - National Files

United States
 Region
 Division
 State
 County
 County subdivision (10,000 or more population)
 Place (10,000 or more population)
 Metropolitan statistical area/Consolidated metropolitan statistical area (MSA/CMSA)
 Consolidated metropolitan statistical area/Primary metropolitan statistical area (CMSA/PMSA)
 Urban area (Final file only)
 Congressional district (106th Congress)
 American Indian and Alaska Native Area and Hawaiian home land
 ZIP Code tabulation area (ZCTA)

USCENSUSBUREAU

Race/Ethnic Detail - Block Level

- Total population
- White
- Black or African American
- American Indian and Alaska Native
- Asian
- Native Hawaiian and Other Pacific Islander
- Some Other Race
- Two or more races
- Hispanic/Latino
- White, not Hispanic/Latino

USCENSUSBUREAU

SF1 Repeating Tabulations

P12D. SEX BY AGE (ASIAN ALONE) [49]
Universe: People who are Asian alone

P12C. SEX BY AGE (AMERICAN INDIAN AND ALASKA NATIVE ALONE) [49]
Universe: People who are American Indian and Alaska Native alone

P12B. SEX BY AGE (BLACK OR AFRICAN AMERICAN ALONE) [49]
Universe: People who are Black or African American alone

P12A. SEX BY AGE (WHITE ALONE) [49]
Universe: People who are White alone
Total:

P12. SEX BY AGE [49]
Universe: Total population
Total:
Male:
Under 5 years
5 to 9 years
10 to 14 years
15 to 17 years
18 and 19 years
20 years
21 years
22 to 24 years
25 to 29 years
30 to 34 years
35 to 39 years
40 to 44 years
45 to 49 years
50 to 54 years
55 to 59 years
60 and 61 years
62 to 64 years
65 and 66 years
67 to 69 years
70 to 74 years
75 to 79 years
80 to 84 years
85 years and over
Female:
(Repeat AGE)

P12L. SEX BY AGE (WHITE ALONE, NOT HISPANIC OR LATINO) [49]
Universe: People who are White alone, not Hispanic or Latino
Total:

P12H. SEX BY AGE (HISPANIC OR LATINO) [49]
Universe: People who are Hispanic or Latino
Total:
Male:

P12G. SEX BY AGE (TWO OR MORE RACES) [49]
Universe: People who are Two or more races
Total:
Male:
Under 5 years
5 to 9 years

P12F. SEX BY AGE (SOME OTHER RACE ALONE) [49]
Universe: People who are Some other race alone
Total:
Male:

P12E. SEX BY AGE (NATIVE HAWAIIAN AND OTHER PACIFIC ISLANDER ALONE) [49]
Universe: People who are Native Hawaiian and Other Pacific Islander alone
Total:
Male:
Under 5 years
5 to 9 years
10 to 14 years

Examples of SF1 Tabulations

- P1 Total population**
- P3 Race**
- P8 Hispanic or Latino**
- P12 Sex by age (5-year groupings)**
- P14 Sex by age for the population under 20 (single years of age)**
- P15 Households**
- P17 Average household size**

USCENSUSBUREAU

Examples of SF1 Tabulations

- Housing Units**
- Occupancy Status**
- Owner-/Renter-Occupied**
- Tenure by Race, by Hispanic or Latino**

USCENSUSBUREAU

Population Subjects - Tract Level

Summarized to the census-tract level

- Detailed race
- Detailed Hispanic/Latino
- Group quarters population
- Households

USCENSUSBUREAU

36 American Indian Categories

Apache	Delaware	Potawatomi
Blackfeet	Houma	Pueblo
Cherokee	Iroquois	Puget Sound Salish
Cheyenne	Kiowa	Seminole
Chickasaw	Latin American *	Shoshone
Chippewa	Lumbee	Sioux
Choctaw	Menominee	Tohomo O'Odham
Colville	Navajo	Ute
Comanche	Osage	Yakama
Cree	Ottawa	Yaqui
Creek	Paiute	Yuman
Crow	Pima	All other categories

*Aztec, Inca, Mayan, etc.

USCENSUSBUREAU

5 Alaska Native Categories

Alaska
Athabaskan
Aleut
Eskimo
Tlingit-Haida
All other tribes

USCENSUSBUREAU

17 Detailed Asian Categories:

Asian Indian	Laotian
Bangladeshi	Malaysian
Cambodian	Pakistani
Chinese, except Taiwanese	Sri Lankan
Filipino	Taiwanese
Hmong	Thai
Indonesian	Vietnamese
Japanese	Other Asian
Korean	

USCENSUSBUREAU

12 Detailed Native Hawaiian and Pacific Islander Categories

Polynesian:

Native Hawaiian
 Samoan
 Tongan
 Other Polynesian

Melanesian:

Fijian
 Other Melanesian

Other Pacific Islander

Micronesian:

Guamanian or
 Chamorro
 Other Micronesian

USCENSUSBUREAU

28 Hispanic or Latino Categories

Mexican
Puerto Rican
Cuban
Dominican

Central American:

Costa Rican
 Guatemalan
 Honduran
 Nicaraguan
 Panamanian
 Salvadoran
 Other Central American

South American:

Argentinean
 Bolivian
 Chilean
 Colombian
 Ecuadorian
 Paraguayan
 Peruvian
 Uruguayan
 Venezuelan
 Other South American

Other Hispanic or Latino:

Spaniard
 Spanish
 Spanish American
 Hispanic or Latino

USCENSUSBUREAU

100-Percent Summary Files

Summary File 2

Almost 50 tables repeated by race,
Hispanic/Latino, and American
Indian and Alaska Native categories

USCENSUSBUREAU

SF2 Subject Content

36 Population tables (PCT) at the census tract level
11 Housing tables (HCT) at the census tract level

47 Tables

USCENSUSBUREAU

SF2 Subject Content

250 Population Groups

- Total population
- 132 race groups
- 78 American Indian and Alaska Native tribe categories
- 39 Hispanic or Latino groups

USCENSUSBUREAU

Population Subjects at the Census Tract Level - (PCT)



PCT1	Total population
PCT2	Urban and Rural (Final National File only)
PCT3	Sex by age (single year of age)
PCT4	Median age by sex
PCT5	Sex by age (5-year groupings)
PCT6	Households
PCT7	Population in household
PCT8	Average household size
PCT9	Household size, household type and presence of own children

USCENSUSBUREAU

Population Subjects at the Census Tract Level - (PCT)

PCT10	Households by presence of people under 18 years by household type
PCT11	Households by age of householder by household type (including living alone) by presence of own children
PCT12	Household type by age of householder
PCT13	Households by presence of people 60 years and over, household size and household type
PCT14	Households by presence of people 65 years and over, household size, and household type
PCT15	Households by presence of people 75 years and over, household size, and household type

USCENSUSBUREAU

Housing Subjects at the Census Tract Level - (HCT)



HCT1	Urban and Rural (Final National File only)
HCT2	Tenure
HCT3	Total population in occupied housing units
HCT4	Total population in occupied housing units by tenure
HCT5	Average household size of occupied housing units by tenure

USCENSUSBUREAU

SF2 Racial and Ethnic Groups

- Detailed American Indian categories
- Detailed Alaska Native categories
- Detailed Asian categories
- Detailed Native Hawaiian and Pacific Islander categories
- Hispanic or Latino categories
- Not Hispanic or Latino categories

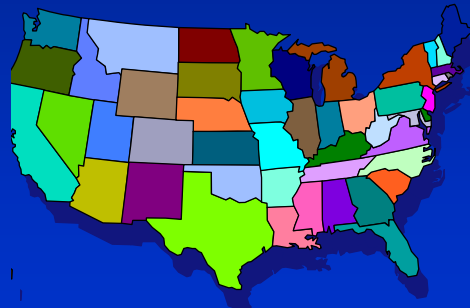
USCENSUSBUREAU

SF2 Releases

Individual files

- 50 States
- District of Columbia
- Puerto Rico

United States



USCENSUSBUREAU

Sample Data Summary Files

Summary File 3

- Counts and cross tabulations of sample items (income, occupation, education, rent and value, vehicles available)
- About 800 tables of data
- Lowest level of geography: block group

USCENSUSBUREAU

Sample Data Summary Files

Summary File 4

- Tables repeated by race, Hispanic/Latino, and American Indian and Alaska Native categories, *and* ancestry
- Lowest level of geography: census tract

USCENSUSBUREAU

Product Availability

File Transfer Protocol (FTP)
 American Factfinder (AFF)
 CD-ROM
 DVD

USCENSUSBUREAU

Data Accessibility

Media Type: FTP, AFF, CD-ROM and DVD

	<u>FTP</u>	<u>AFF</u>	<u>CD-ROM/DVD</u>
Difficulty	High	Low	Low
Cost	No	No	Yes
User Level	High	All	All
Speed	Variable	Variable	High
Connect Issues	Possible	Possible	Unlikely
Download limits	None	5 MB	CD size
Graphical User Interface	None	Yes	Yes

USCENSUSBUREAU

File Transfer Protocol (FTP)

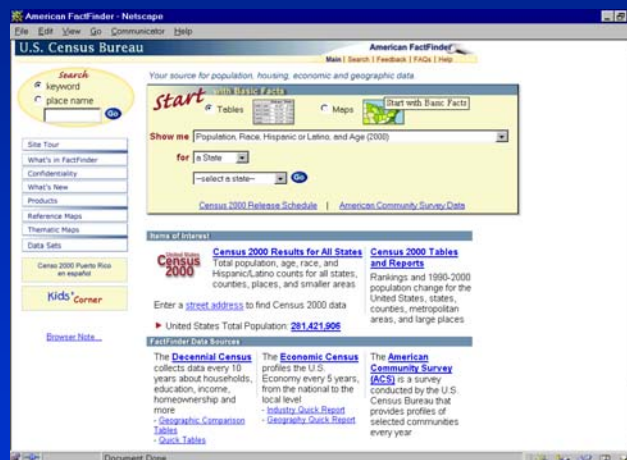
File Transfer Protocol (FTP)

- For downloading complete dataset files
- Available at <http://ftp2.census.gov>

USCENSUSBUREAU

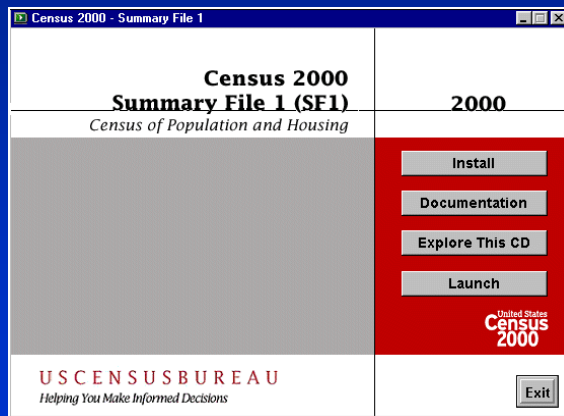
American FactFinder

- SF1 data publicly accessible at www.census.gov
- Click on "A" or American FactFinder
- Or visit: factfinder.census.gov



USCENSUSBUREAU

CD-ROM and DVD



Data provided on CD-ROM and DVD, with software to view, print, download items

USCENSUSBUREAU

Disc Technology for Census 2000

- CD-ROM capacity approximately 680 MB
- DVD-5 (SS/SL) capacity approximately 4.7 BB
- DVD-9 (SS/DL) a little less than double that of the SL version --- equivalent to about 12 full CD-ROMs
- Released as individual State files --- then national summaries
- Recordable CD-ROMs followed by manufactured DVD sets

USCENSUSBUREAU

Some Facts About Summary File 1

- Extensive tabulation of 'short form' data at the block level and higher
- 9.2 million geographic summaries
- 60 billion data cells
- Would have required 3,600 tapes or 900 CD-ROMs using '1990' technology

USCENSUSBUREAU

Disc Software Functions for Census 2000

- Geographic selection from hierarchical menu
- Selection of whole tables and/or individual data items
- Definition of custom variables
- Aggregation of user-defined areas

USCENSUSBUREAU

Disc Software Functions for Census 2000 (continued)

- Creation of customized reports and output files
- Selection of several output file formats including ASCII, database and spreadsheet
- Compression

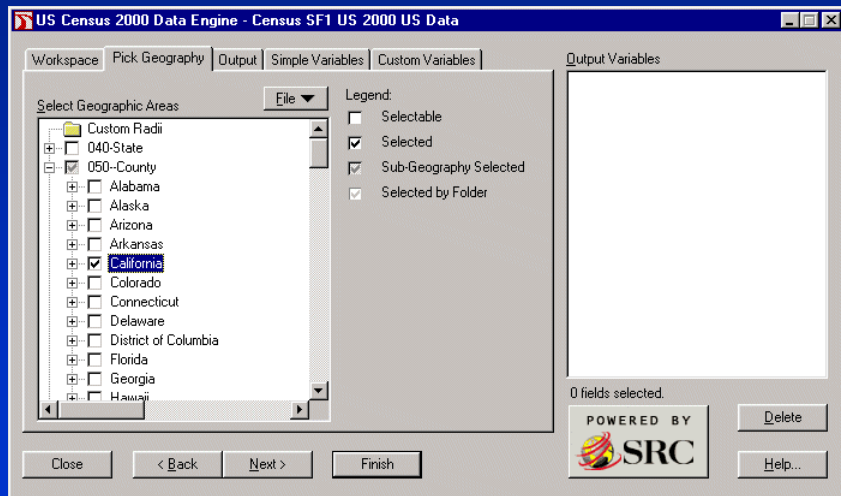
USCENSUSBUREAU

User Software Selected for Census 2000 Summary File Discs

- SRC's Allocate software with modifications
- Features required functionality
- Will support major Census 2000 product lines on small number of CD-ROMs and DVDs due to superb compression

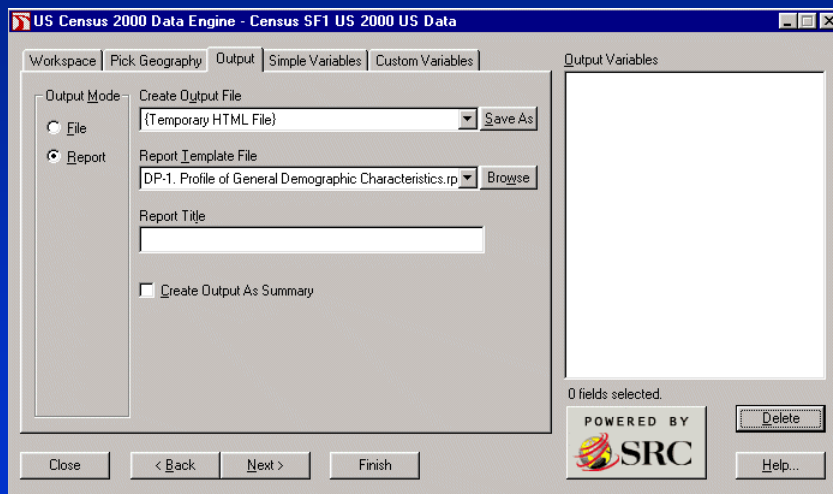
USCENSUSBUREAU

GO 2000: Pick Geography



USCENSUSBUREAU

GO 2000: Select Report Template



USCENSUSBUREAU

GO 2000 : General Demographic Profile

Alameda County
Alpine County
Amador County
Butte County
Calaveras County
Colusa County
Contra Costa County
Del Norte County
El Dorado County
Fresno County
Glenn County
Humboldt County
Imperial County
Inyo County
Kern County
Kings County
Lake County
Lassen County
Los Angeles County
Madera County
Marin County
Mariposa County
Mendocino County
Merced County

U.S. Census Bureau

Table DP-1. Profile of General Demographic Characteristics: 2000
Geographic Area: Alameda County

NOTE: For information on confidentiality protection, nonsampling error, and definitions, see text.

Subject	Number	Percent	Subject	Number	Percent
Total population	1,443,741	100.0%	HISPANIC OR LATINO AND RACE	1,443,741	100.0%
SEX AND AGE			Hispanic or Latino (of any race)	273,910	19.0%
Male	709,300	49.1%	Mexican	193,011	13.4%
Female	734,441	50.9%	Puerto Rican	10,186	0.7%
Under 5 years	98,378	6.8%	Cuban	1,935	0.1%
5 to 9 years	104,648	7.2%	Other Hispanic or Latino	68,778	4.8%
10 to 14 years	96,769	6.7%	Not Hispanic or Latino	1,169,831	81.0%
15 to 19 years	92,448	6.4%	White alone	591,095	40.9%
20 to 24 years	100,745	7.0%	RELATIONSHIP		
25 to 34 years	241,078	16.7%	Total population	1,443,741	100.0%

USCENSUSBUREAU

GO 2000: Simple Variables

Workspace Pick Geography Output **Simple Variables** Custom Variables

Input Variables

- H Tables
- H 1. HOUSING UNITS [1]
- H 2. URBAN AND RURAL [6]
- H 3. OCCUPANCY STATUS [3]
- H 4. TENURE [3]
- H 5. VACANCY STATUS [7]**
- H 6. RACE OF HOUSEHOLDER
- H 7. HISPANIC OR LATINO HOI
- H 8. TOTAL RACES TALLIED FI
- H 9. HISPANIC OR LATINO BY
- H10. TOTAL POPULATION IN C
- H11. TOTAL POPULATION IN C
- H11A. TOTAL POPULATION IN
- H11B. TOTAL POPULATION IN
- H11C. TOTAL POPULATION IN

Legend

- Normal Variable
- No Data Available
- Ranking Variable

Select -->

Output Variables

- H Tables
- H 4. TENURE [3]
 - H004001 Total
 - H004002 Owner occup
 - H004003 Renter occup
- H 5. VACANCY STATUS [7]
 - H005001 Total
 - H005002 For rent
 - H005003 For sale only
 - H005004 Rented or so
 - H005005 For seasonal
 - H005006 For migrant w
 - H005007 Other vacant

10 fields selected.

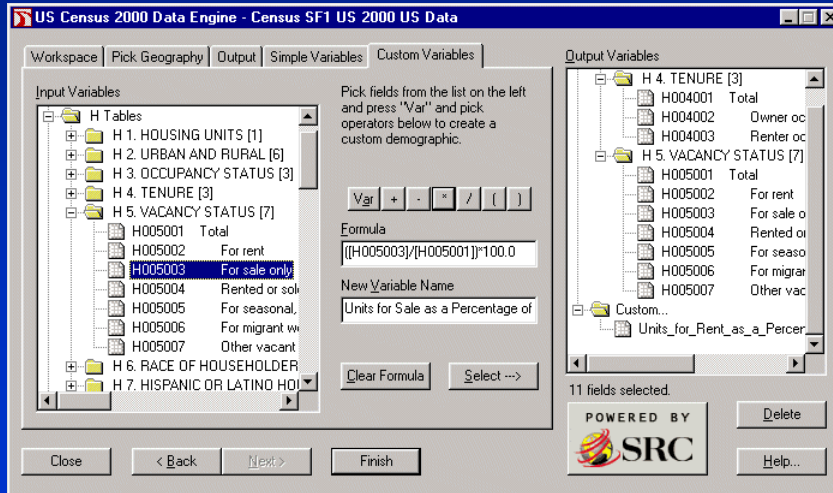
Close < Back Next > Finish

POWERED BY

Delete Help...

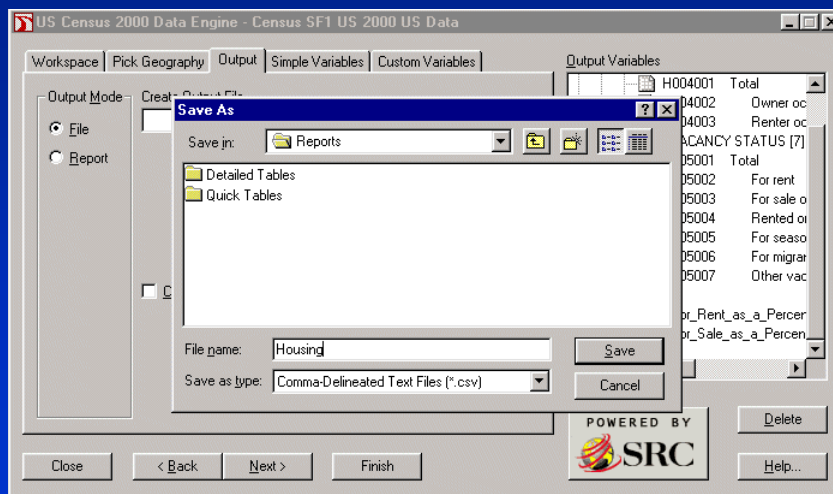
USCENSUSBUREAU

GO 2000: Custom Variables



USCENSUSBUREAU

GO 2000: Specify Output File



USCENSUSBUREAU

GO 2000: Open Output File in Excel

1	A	B	C	D	E	F	G	H	I	J
1	NAME	KEY	H004001	H004002	H004003	H005001	H005002	H005003	H005004	H005005
2	Alameda County	6001	523366	286277	237089	16817	6086	1919	2000	16
3	Alpine County	6003	483	330	153	1031	14	3	2	9
4	Amador County	6005	12759	9629	3130	2276	145	187	75	16
5	Butte County	6007	79566	48336	31230	5957	1728	1016	524	13
6	Calaveras County	6009	16469	12967	3502	6477	231	278	180	54
7	Colusa County	6011	6097	3853	2244	677	70	89	35	3
8	Contra Costa County	6013	344129	238449	105680	10448	2950	1846	1313	18
9	Del Norte County	6015	9170	5852	3318	1264	395	180	97	3
10	El Dorado County	6017	58939	44019	14920	12339	919	535	364	96
11	Fresno County	6019	252940	142795	110145	17827	6352	2355	1051	36
12	Glenn County	6021	9172	5855	3317	810	298	88	108	1
13	Humboldt County	6023	51238	29534	21704	4674	1067	509	325	17
14	Imperial County	6025	39384	22975	16409	4507	842	319	230	20
15	Inyo County	6027	7703	5076	2627	1339	195	95	101	4
16	Kern County	6029	208652	129609	79043	22912	7029	3409	1267	57
17	Kings County	6031	34418	19253	15165	2145	903	349	187	1
18	Lake County	6033	23974	16914	7060	8554	810	732	280	54
19	Lassen County	6035	9625	6575	3050	2375	473	281	77	10
20	Los Angeles County	6037	3133774	1499744	1634030	137135	56089	23874	11716	136

USCENSUSBUREAU

Public Use Microdata Sample Files

Unaggregated records of responses to Census 2000 with all identifying information removed

Two Files Planned

- 1-Percent National Characteristics File
- 5-Percent State Files
 - 100,000 population threshold for geography
 - 10,000 population threshold for characteristics

USCENSUSBUREAU

Demographic Profiles

100% and Sample Data Profiles

Table DP-1. Profile of General Demographic Characteristics: 2000
 Geographic Area: United States
 [For information on confidentiality protection, nonsampling error, and definitions, see text]

Subject	Number	Percent	Subject
Total population.....	281,421,906	100.0	HISPANIC OR LATINO AND RACE
SEX AND AGE			
Male	138,053,563	49.1	Total population.....
Female.....	143,368,343	50.9	Hispanic or Latino (of any race).....
Under 5 years	19,175,798	6.8	Mexican.....
5 to 9 years	20,549,505	7.3	Puerto Rican.....
10 to 14 years	20,528,072	7.3	Cuban.....
15 to 19 years	20,219,890	7.2	Other Hispanic or Latino
20 to 24 years	18,964,001	6.7	Not Hispanic or Latino
25 to 34 years	39,891,724	14.2	White alone.....
35 to 44 years	45,148,527	16.0	RELATIONSHIP
45 to 54 years	37,677,952	13.4	Total population.....
55 to 59 years	13,469,237	4.8	In households.....
60 to 64 years	10,805,447	3.8	Householder.....
65 to 74 years	18,390,986	6.5	Spouse.....
75 to 84 years	12,361,180	4.4	Child.....
			Own child under 18 years
			Other relatives.....

USCENSUSBUREAU

Tables

Quick Tables

U.S. Census Bureau Am

Main | Search | Fe

Quick Tables Change Selections | Print / Downlo

DP-1 Profile of General Demographic Characteristics: 2000
 Data Set: [Census 2000 Summary File 1 \(SF 1\) 100-Percent Data](#)
 Geographic Area: **Alabama**

NOTE: For information on confidentiality protection, nonsampling error, and definitions, see <http://factfinder.census.gov/home/en/datanotes/except1u.htm>.

Subject	Number	Percent
Total population	4,447,100	100.0
SEX AND AGE		
Male	2,146,504	48.3
Female	2,300,596	51.7
AGE		
Under 5 years	295,992	6.7
5 to 9 years	315,345	7.1

USCENSUSBUREAU

Tables

Geographic Comparison Tables

U.S. Census Bureau Am

Main | Search | Fe

Geographic Comparison Table Change Selections | Print / Downlo

GCT-P5, Age and Sex: 2000
 Data Set: Census 2000 Summary File 1 (SF 1) 100-Percent Data
 Geographic Area: Alabama - County

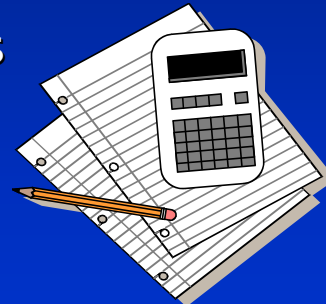
NOTE: For information on confidentiality protection, nonsampling error, and definitions, see <http://factfinder.census.gov/home/en/data/notes/esp071u.htm>.

Geographic area	Total population	Percent of total population					Median age (years)	Males per 100 females	
		Under 18 years	18 to 24 years	25 to 44 years	45 to 64 years	65 years and over		All ages	18 years and over
Alabama	4,447,100	25.3	9.9	29.0	22.8	13.0	36.8	93.3	89.6
COUNTY									
Autauga County	43,871	28.6	8.0	30.7	22.5	10.2	35.1	94.5	90.6
Baldwin County	140,415	24.4	7.5	27.7	24.9	15.5	39.0	96.2	93.2
Barbour County	29,038	25.4	9.3	29.6	22.4	13.3	35.8	106.4	106.8
Bibb County	20,826	25.4	9.5	30.9	22.7	11.6	34.7	106.6	107.0
Brent County	51,633	25.4	9.3	29.3	21.4	13.0	36.2	96.7	93.2

USCENSUSBUREAU

User-Requested Tabulations

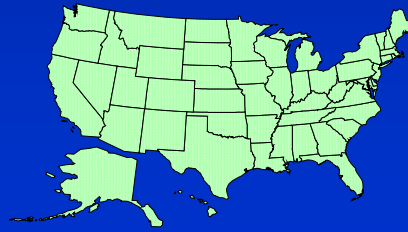
Special Tabulations



USCENSUSBUREAU

Maps and Related Products

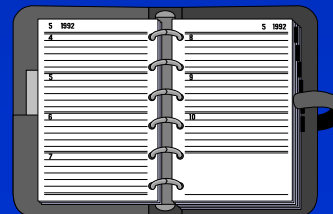
Census 2000 TIGER/Line Files
Census Block Maps (County and
Governmental Units)
Census Tract Outline Maps
Boundary Files



USCENSUSBUREAU

Release of Census 2000 Products

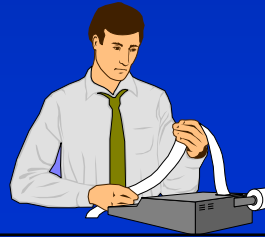
December 31, 2000 -- Official State counts
April 1, 2001-- Redistricting counts
2001-- Long-form data products
2002 -- Short-form data products



USCENSUSBUREAU

Cost of Census 2000 Products

Most information free through the Internet
Charges for detailed custom tabulations
Charges for CD-ROMs, printed reports,
print on-demand



USCENSUSBUREAU

For More Information

<p>2000 Issued September 2000 MSO/00-CDPRV</p> <p>Highlights <i>Census of Population and Housing Topics</i>, p. 1. • Includes 100-percent and sample characteristics.</p> <p><i>Census 2000 Geographic</i></p>	<h2>Introduction to Census 2000 Data Products</h2> <p>Census 2000 is the largest peacetime effort in the history of the United States. Information about the 118 million housing units and 275 million people across the United States will be available in a variety of formats and media, including the Internet, CD-ROMs, DVDs, and printed reports. This brochure provides a brief introduction to the information available from Census 2000, Census 2000 geography, maps, and data products. Visit our Web site at http://www.census.gov for more information.</p> <p>Information Available From the 22nd Census of Population and Housing</p>
---	--

USCENSUSBUREAU

For More Information

Subscribe to the Census Product Update

U.S. Census Bureau

CENSUS PRODUCT UPDATE
Current and Future Data Releases from the U.S. Census Bureau

September 27, 2001

CPU01-20 ♦ Biweekly Bulletin from the Marketing Services Office

The *Census Product Update* is a biweekly listing of recently released and upcoming data products from the U.S. Census Bureau. Editors: Polly Gordon and Belva Kirk (contact information below).

Census Bureau data come in many [media types](#). PDF files cited below can be ordered in print from the Customer Services Center at a cost. Call for prices. Before ordering other products listed for sale, be sure to consult the ordering information at the end of the newsletter.

USCENSUSBUREAU

For More Information

Data User Training

USCENSUSBUREAU

For More Information

Visit us at:

<http://www.census.gov>

USCENSUSBUREAU

What's Next?

American Community Survey

- Ongoing survey throughout the decade
- Replacement for long-form questionnaire in 2010
- Detailed information for small area geography

USCENSUSBUREAU

What's Next?

Census 2000 Supplementary Survey

- National survey taken during Census 2000
- First look at 1990-2000 change
- Building block to reengineered 2010 census
- National and State-level data
- First release August 2001

USCENSUSBUREAU

Census 2000 Data Products



USCENSUSBUREAU