



STAT•USA[®]

Delivering timely business, trade, and economic information since 1985



History

Since 1985, one of STAT-USA's missions has been to cultivate products and services to assist the educational community in offering expanding their exporting efforts internationally.

STAT-USA®/Internet™ and **USA Trade® Online** were created with that goal in mind.



STAT-USA Products & Services

➤ STAT-USA[®]/Internet TM

www.stat-usa.gov

➤ USA Trade [®] *Online*

www.usatradeonline.gov

➤ STAT•News

home.stat-usa.gov/statnews

➤ Training

home.stat-usa.gov/training



FDL Access

- Two **FREE** single designated workstation accounts for STAT-USA/Internet and USA Trade *Online*.
- IP Authentication Available!

Got Questions?

Contact Michael Clark of the Government Printing Office

Phone: 202-512-1372

Email: mclark@gpo.gov



STAT-USA[®]/Internet[™]



STAT-USA[®]/Internet[™]

Your trusted source for federal business, trade, and economic information!

July 23, 2009 Edition

You are logged in as Usdoo/Ita/Oirm

- Home
- Log-in Now
- Account Maintenance Renew Here!
- Subscribe Now!
- Site Search
- Documents Added Recently
- Frequently Asked Questions
- Training Center
- STAT[®] News
- About STAT-USA/Internet
- About Us
- STAT-USA Products
- Contact Us
- Privacy Policy
- Accessibility
- Endorsement Disclaimer
- Help

STAT-USA/Internet, a service of the [U.S. Department of Commerce](#), is a single point of access to authoritative business, trade, and economic information from across the Federal Government.



[State of the Nation](#) -- Obtain over 50,000 current and historical U.S. statistical releases, state and regional analysis reports, forecasts, and financial data!

Major releases scheduled for today.

- [U.S. Export Sales](#) is scheduled to be released at 8:30 am.
- [Unemployment Insurance Weekly Claims Report](#) is scheduled to be released at 8:30 am.
- [Mass Layoffs](#) is scheduled to be released at 10:00 am.
- [Weekly Natural Gas Storage Report](#) is scheduled to be released at 10:30 am.
- [Factors Affecting Reserves](#) is scheduled to be released at 4:30 pm.
- [Historical Money Stock](#) is scheduled to be released at 4:30 pm.
- [Money Stock, Liquid Assets, and Debt Measures](#) is scheduled to be released at 4:30 pm.
- [Aggregate Reserves](#) is scheduled to be released at 4:30 pm.



[GLOBUS & NTDB](#) -- Obtain over 200,000 current and historical trade-related releases, international market research, country analysis, and trade and procurement leads!

Just added:

- **Updated!** STAT-USA has updated the [CIA World Factbook](#) in the International Trade Library section.

If you intend to disseminate files from this product electronically, please contact us.

[home.stat-usa.gov](#) • [Economics & Statistics Administration](#) • [U.S. Department of Commerce](#)
1-800-STAT-USA • 202-482-1986 • statmail@doc.gov



Economic Overview

The State of the Nation side of STAT-USA/Internet provides the majority of the leading economic indicators that are used to analyze and forecast the U.S. economy.

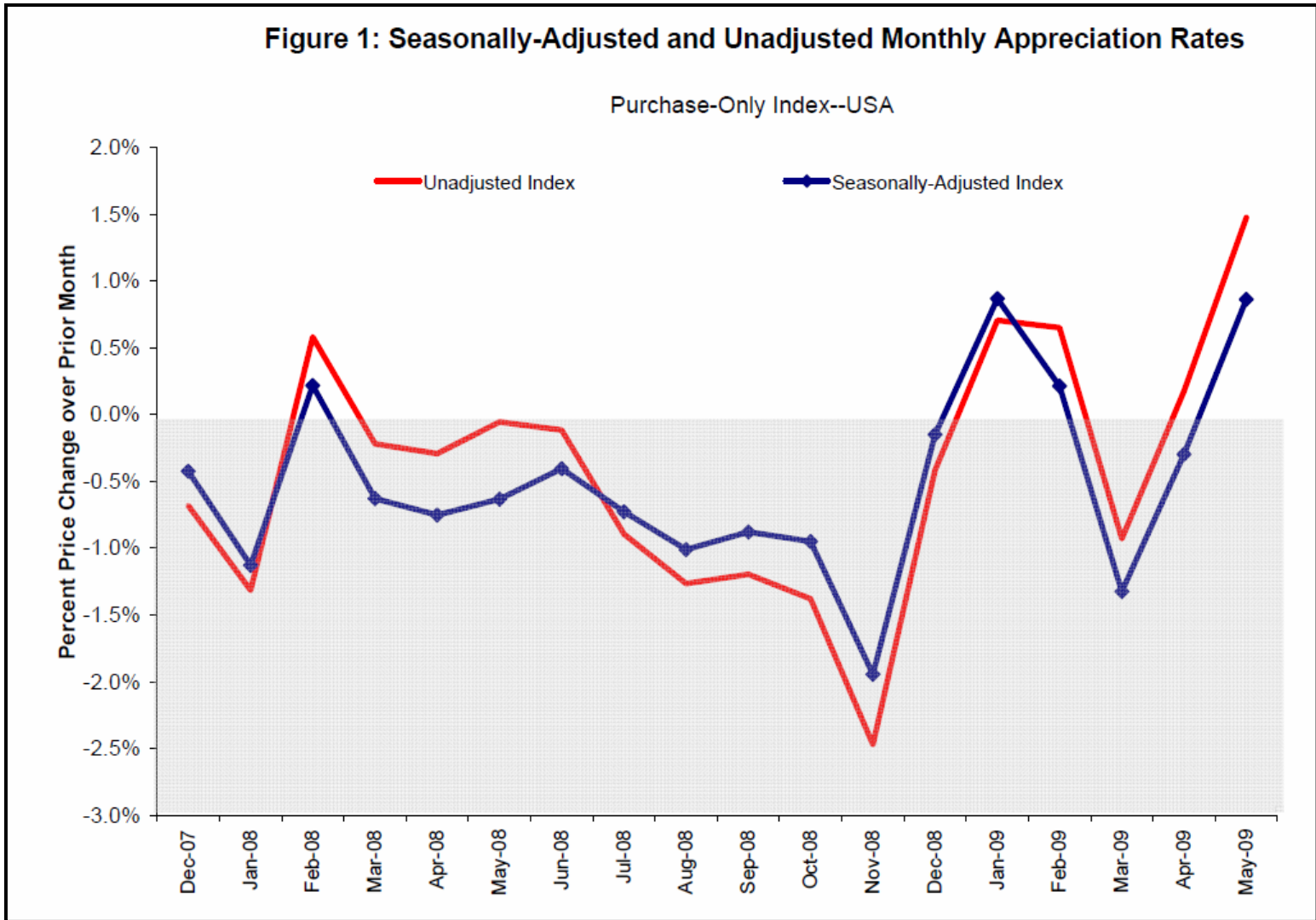
Recently, STAT-USA has added **over 2,000** new current data series sets ranging from the agriculture, energy, and travel and tourism industries.

We've also added more financial and state data including Small Business Economic Profiles and Housing Price Index and Mortgage reports.



Housing Market

Figure 1: Seasonally-Adjusted and Unadjusted Monthly Appreciation Rates





Energy Awareness

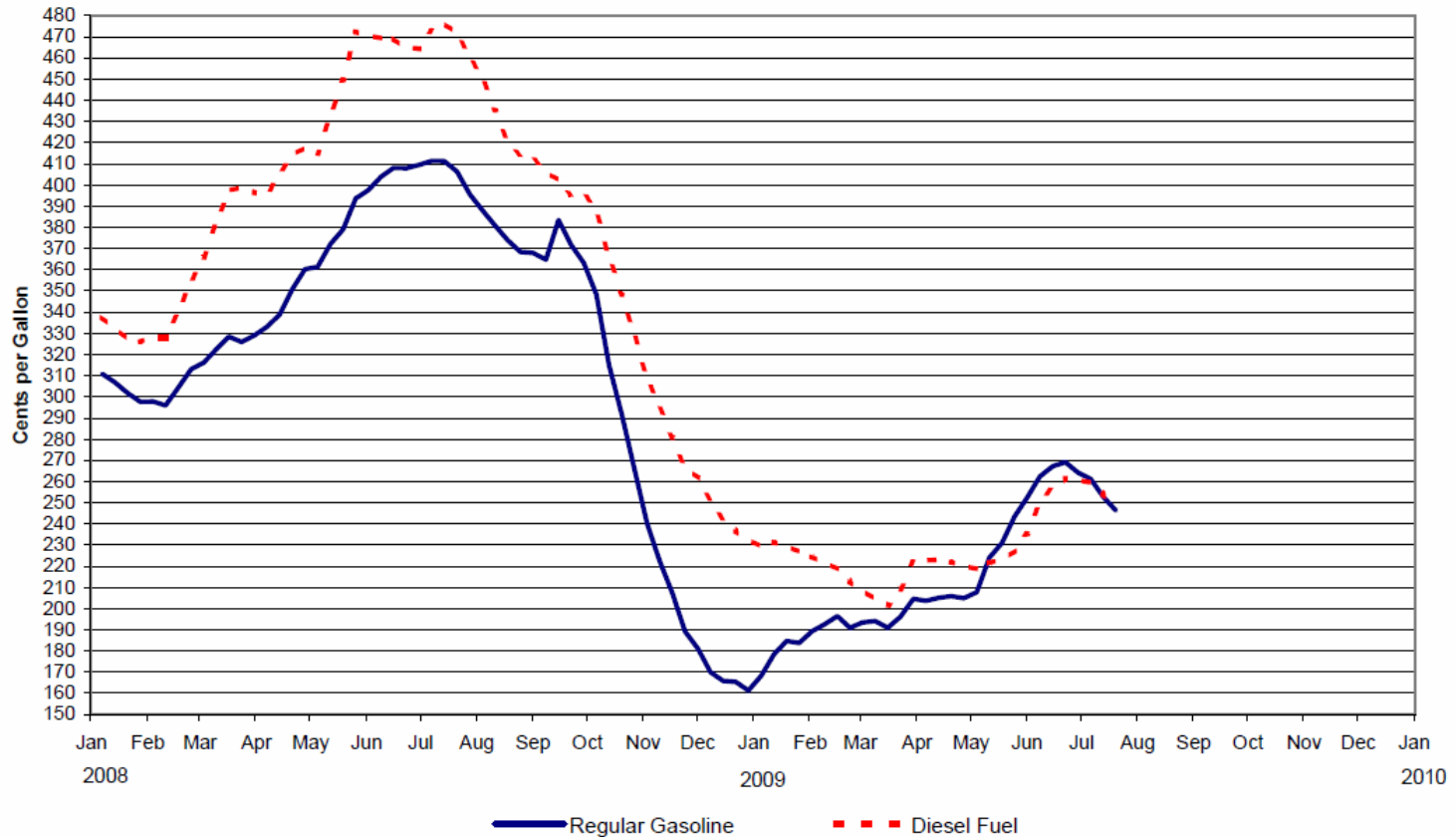
- Coal
- Electricity
- Natural Gas
- Nuclear
- Petroleum
- Renewable Alternative Energy

- Weekly U.S. Retail Gasoline Prices by regions and select states and cities
- **Weekly Petroleum Status Reports which track U.S. imports, production and national prices**



Energy Awareness

Figure 14. U.S. Average Retail Regular Motor Gasoline and On-Highway Diesel Fuel Prices, January 2008 to Present
(Cents per Gallon, Including Taxes)





Travel Statistics

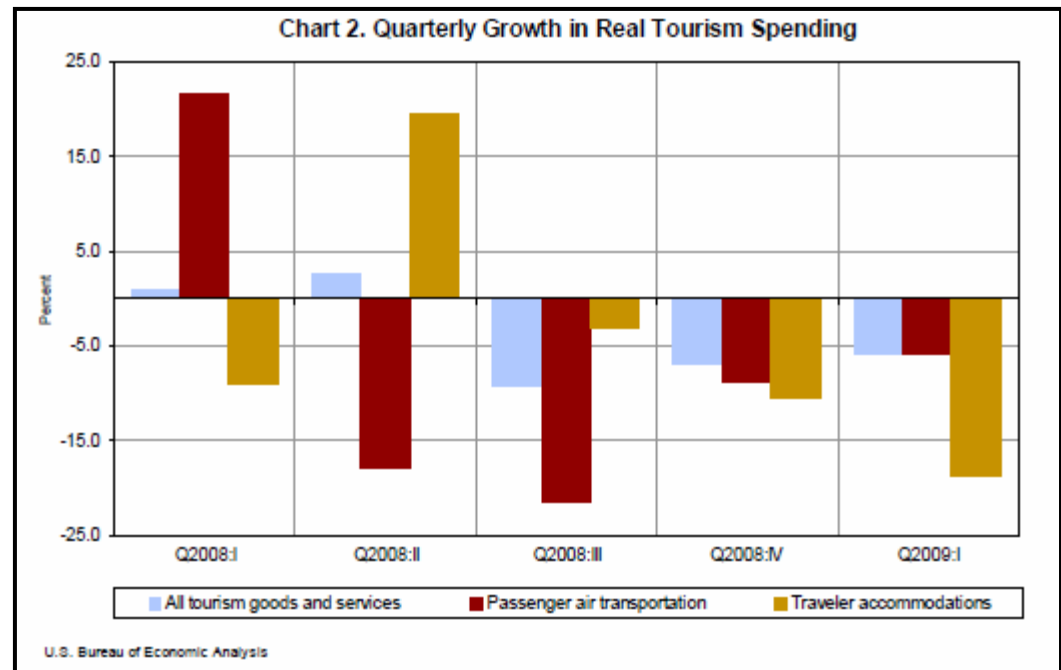
Overseas⁽¹⁾ Visitors To Select U.S. Cities: 2007-2008

2008 Rank	Destination (City) ⁽²⁾	2007 Market Share	2007 Visitation (000)	2008 Market Share	2008 Visitation (000)	Volume Change (%)
1	New York City	32.0%	7,646	32.4%	8,211	7%
2	Los Angeles	11.1%	2,652	11.0%	2,788	5%
3	San Francisco	9.5%	2,270	10.3%	2,610	15%
4	Miami	9.8%	2,341	10.2%	2,585	10%
5	Orlando	8.6%	2,055	9.6%	2,433	18%
6	Las Vegas	7.2%	1,720	8.0%	2,027	18%
7	Oahu/Honolulu	6.5%	1,553	5.9%	1,495	-4%
8	Metro DC Area	5.0%	1,195	5.8%	1,470	23%
9	Chicago	4.8%	1,147	5.4%	1,368	19%
10	Boston	4.5%	1,075	4.4%	1,115	4%



Travel Statistics

First quarter 2009 Real Tourism Spending shows a continued decline of 5.8% in air transportation, after previously decreasing 8.7% in the fourth quarter of 2008.





International Overview

GLOBUS & NTDB is a leading provider of several key international reports and statistics.

STAT-USA carries extensive **Market Research Reports** which are key in helping small businesses develop and maximize international opportunities.

STAT-USA has also brought back the popular **Best Market Reports**, which help to pinpoint the best export markets worldwide.



Extensive Country Reports

- Country Background Notes
- Country Commercial Guides
- Country Studies Programs
- Country Energy Analysis Briefs
- Global Agricultural Reports
- CIA World Factbook



STAT-USA®

USA Trade *Online*



STAT-USA®

Home

Log-In Now

Account Maintenance Renew Here!

Subscribe Now!

Training Center

STAT® News

2009 Release Schedule

Frequently Asked Questions

2007 NAICS Definitions

Guide To Foreign Trade Statistics

Cross-Classifications Imports (Excel format)

Cross-Classifications Exports (Excel format)

Free Demo!

About USA Trade Online

About Us

STAT-USA Products

Contact Us

Privacy Policy

Accessibility

Help

On time. On demand. Online.

USA Trade[®] Online

Show me the trade data! [click here](#)

You are logged in as Terri Long (account: 80ABR, also known as TLONG). [Click here to logout now!](#)
[Click here to access the trade data.](#)

USA Trade[®] Online

The *Official* Source for U.S. Merchandise Trade Data

NOTE: Major Aircraft Industry Trade Data Changes. As a result of an analysis of the aircraft industry, export data from January 2004 through December 2008 was revised on June 10th. For more information on these changes, please [click here](#).

STAT-USA and the Foreign Trade Division of the U.S. Census Bureau are pleased to bring you USA Trade *Online*! With this dynamic service, you can access current and cumulative U.S. export and import data for over 18,000 export commodities and 24,000 import commodities. USA Trade *Online* provides trade statistics using the Harmonized System (HS) up to the 10-digit level and the North American Industry Classification System (NAICS) commodity classification codes up to the 6-digit level.

Subscribe to USA Trade *Online* and obtain monthly and annual trade statistics at the district and port level, as well as state exports! Using this powerful tool, learn how to build custom reports and charts that will keep you on the leading edge of your competition.

Still unsure? Try the [Free Demo!](#)

home.stat-usa.gov • [Economics & Statistics Administration](#) • [U.S. Department of Commerce](#) • [U.S. Census Bureau](#)
1-800-STAT-USA • 202-482-1986 • statmail@doc.gov



Powered by





USA Trade *Online*

Data Source Selection Welcome to USA Trade ® *Online*.

Data are available through May 2009

Harmonized System (HS) District-level Data

Standard Report - Monthly	Imports	Exports
Standard Report - Annual	Imports	Exports
Standard Report - Cumulative YTD	Imports	Exports
Trade By Commodity	Imports	Exports
Country By Commodity	Imports	Exports

Data are available through May 2009

Harmonized System (HS) Port-level Data

Port Level - Standard Report - Monthly	Imports	Exports
Port Level - Standard Report - Annual	Imports	Exports
Port Level - Standard Report - Cumulative YTD	Imports	Exports

Data are available through May 2009

State Export Data

Standard Report	HS	NAICS
-----------------	--------------------	-----------------------

Data are available through May 2009

NAICS Data

Standard Report	Exports and Imports
-----------------	-------------------------------------



Data Options

Data Level	HS	NAICS	Measures
District Level	2-, 4-, 6- and 10- digit	3-, 4-, 5- and 6-digit	HS: Total Value, Quantity and Unit Price NAICS: Total Export Value, Domestic Export Value, Foreign Export Value, General Imports for Consumption Value, General Imports CIF Value, Imports for Consumption Customs Value, Imports for Consumption CIF Value, and Balance of Trade
Port Level	2-, 4- and 6-digit	N/A	Total Value, Vessel Value, Vessel SWT, Air Value, Air SWT, Containerized Vessel Value and Containerized Vessel SWT
State Level	2-, 4-, 6-digit	3- and 4-digit	Total Value, Vessel Value, Vessel SWT, Air Value, Air SWT, Containerized Vessel Value and Containerized Vessel SWT



Features

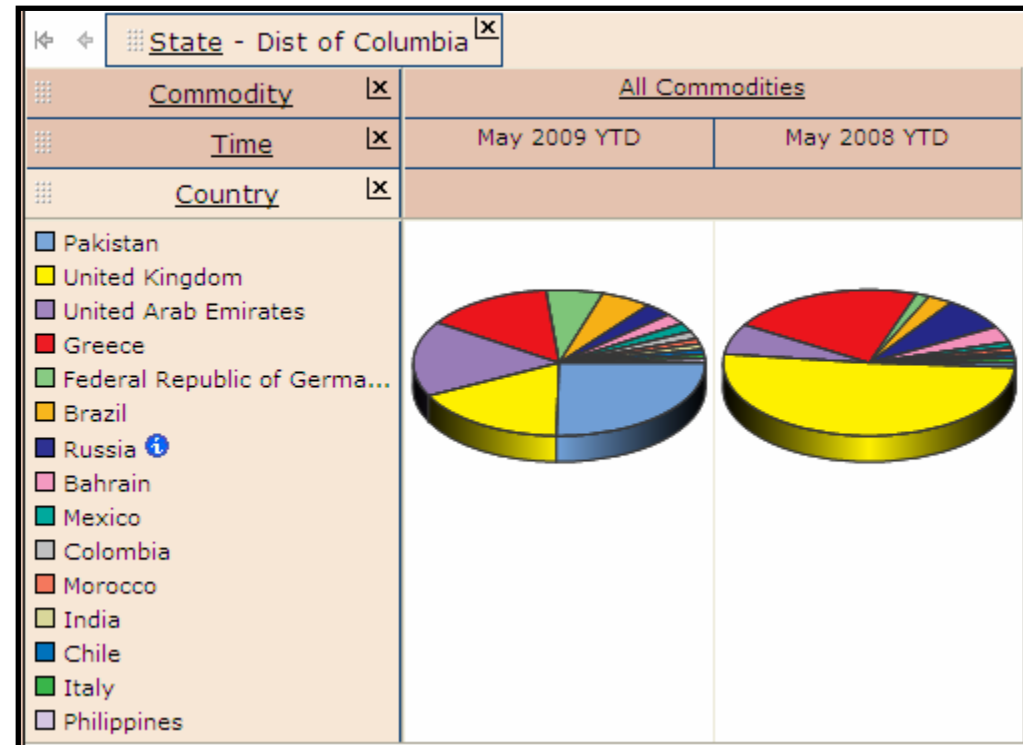
- Customized Reports
- Automatic monthly updates
- Download to XML, data delimited and .XLS
- Average and percentage calculations
- Data within minutes of release
- Method of transportation & containerized shipping
- Create colorful charts
- Exception highlighting



Washington, D.C. Exports

This table of the top 15 countries exported to...

State - Dist of Columbia			
Commodity	All Commodities		
	Time	May 2009 YTD	May 2008 YTD
Country			
Pakistan		102,888,872	2,670,855
United Kingdom		70,200,252	136,915,351
United Arab Emirates		68,141,552	18,303,682
Greece		58,053,514	58,026,811
Federal Republic of Germa...		25,741,884	3,986,523
Brazil		22,676,664	7,334,730
Russia		12,389,515	19,554,543
Bahrain		9,912,061	9,549,653
Mexico		8,075,057	3,281,553
Colombia		6,813,801	261,820
Morocco		4,936,942	2,756,719
India		4,830,825	1,468,399
Chile		4,659,429	2,063,012
Italy		3,832,700	2,702,933
Philippines		3,743,646	18,586

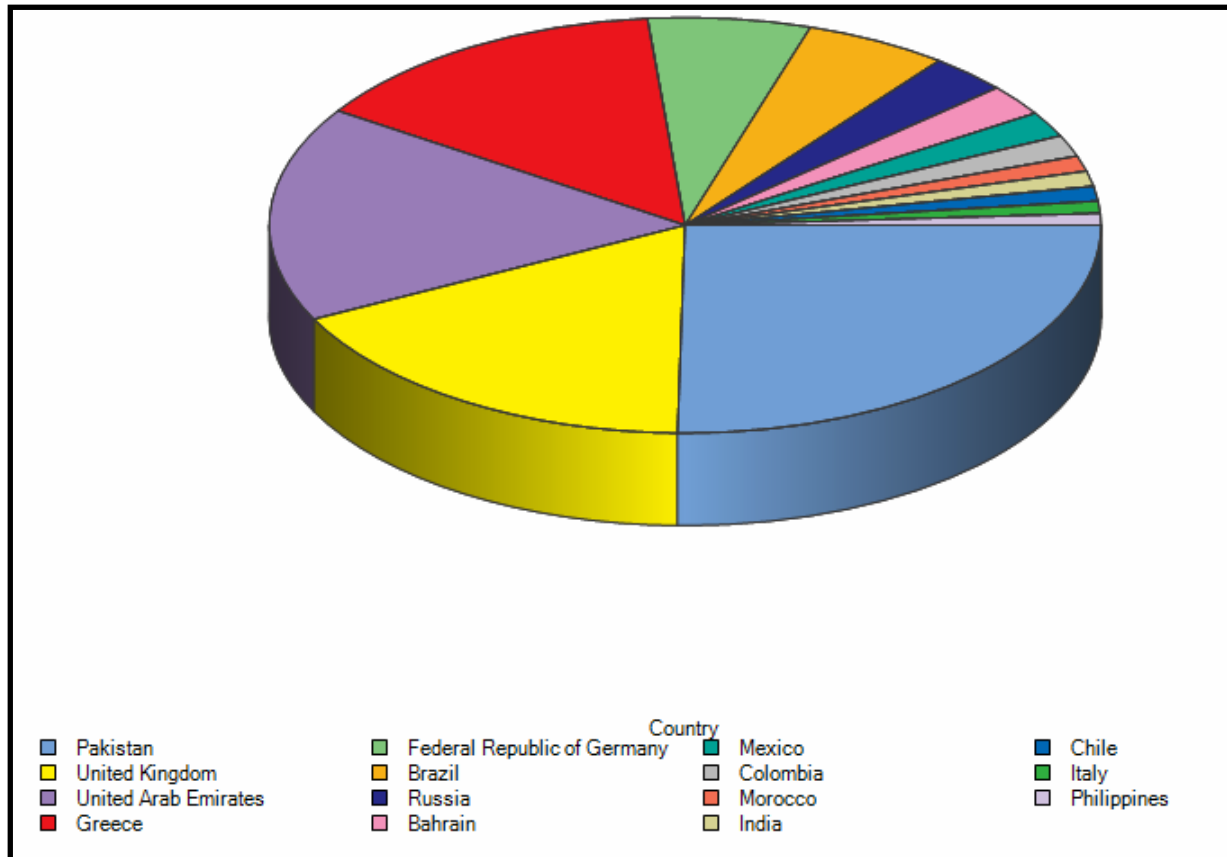


Becomes these colorful charts!



Washington, D.C. Exports

May Y-T-D 2009: Top 15 Countries Exported to by Dollar Value





The Katrina Effect

August 29, 2005:

Hurricane Katrina makes landfall in Southern Louisiana as a Category 3 hurricane with maximum winds estimated near 125 mph. The city of New Orleans is devastated as a day later, the levees break, flooding the city.



Source: National Oceanic and Atmospheric Administration

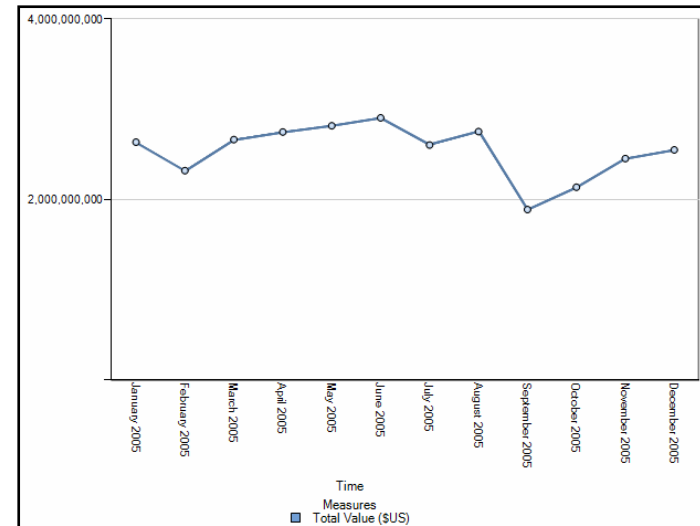
Using USA Trade *Online*, you can create a chart to display the financial effect on the trade in and out of the port of New Orleans in September 2005, compared to the rest of the calendar year.



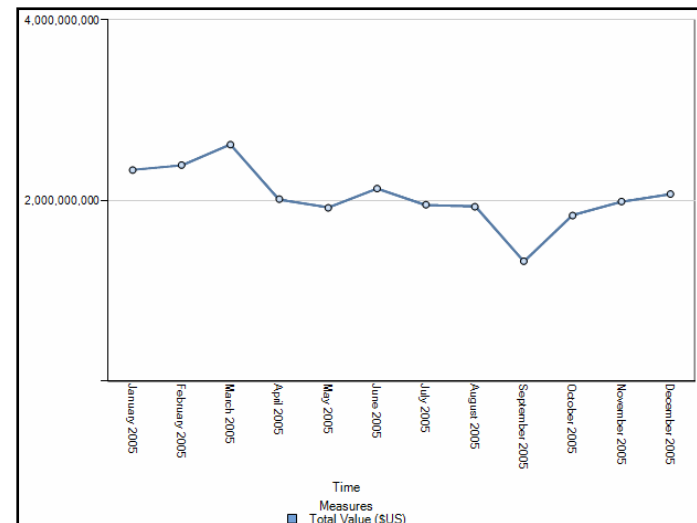
Post-Katrina New Orleans

Easy Steps!

1. **Select Port Level Standard Reports – Monthly Imports.**
2. **Port Dimension:** Select the Port of New Orleans.
3. **Commodity Dimension:** Select Total All Commodities.
4. **Country Dimension:** Select World Total.
5. **Measures Dimension:** Select Total Value (\$US)
6. **Time Dimension:** Edit the Time Series set for a base period beginning with December 2005, with previous 11 months included.
7. **Click the “View Chart” icon and select line graph.**
8. **Repeat for Port Level Standard Reports – Monthly Exports.**



Port of New Orleans Imports January – December 2005



Port of New Orleans Exports January – December 2005



The Training Center

Take the opportunity to get personalized training from a STAT-USA Expert for your library or institution!

Learn how to efficiently build complex reports through **USA Trade Online** or discover informative international and domestic reports through effective searching of **STAT-USA/Internet** all for an affordable price!

<http://home.stat-usa.gov/training>



STAT•News

Receive timely notifications about product enhancements and changes, training materials and other relevant STAT-USA information with **STAT•News!**

Anyone can sign up, whether you're an individual user or part of a large institution! Best of all – it's **FREE!**

<http://home.stat-usa.gov/statnews>



Contact Us

Terri Long, Training & Marketing

202-482-3591

Email: tlong@doc.gov

STAT-USA

1-800-STAT-USA (782-8872) or 202-482-1986

Email: statmail@doc.gov