



Smithsonian Libraries and Archives

Natural and Physical Sciences Library Collections

FDLP – November 3, 2022

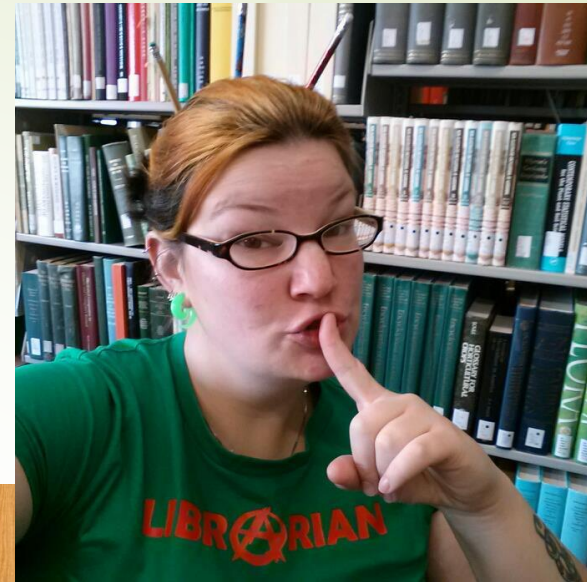
Advancing knowledge at home and around the world.



Smithsonian
Libraries and Archives

Who Am I?

- Bonnie Felts
- Started at the Smithsonian Libraries (now Smithsonian Libraries and Archives) in 2012
 - Previously worked in Archives
- MSLS from PennWest Clarion in 2015
- Manages:
 - Museum Support Center Library
 - Museum Studies Research Library & Smithsonianiana
 - Vertebrate Paleontology Library
 - Kellogg Marine Mammal Library
 - Reference Librarian for Natural History



Smithsonian Libraries



History and Culture

Anacostia Community Museum Library
Museum Studies Research Library
National Air and Space Museum Library
National Museum of African American History & Culture Library
National Museum of American History Library
National Postal Museum Library
The Vine Deloria, Jr. Library, National Museum of the American Indian



Art

American Art Museum/National Portrait Gallery Library
Cooper-Hewitt Smithsonian Design Library
Freer Gallery and Sackler Gallery Library
Hirshhorn Museum and Sculpture Garden Library
Warren M. Robbins Library, National Museum of African Art



Science

Botany and Horticulture Library
John Wesley Powell Library of Anthropology
Museum Support Center Library
National Museum of Natural History Library
National Zoological Park Library
Smithsonian Environmental Research Center Library
Smithsonian Tropical Research Institute Library



Special Collections

Dibner Library of the History of Science and Technology
Joseph F. Cullman 3rd Library of Natural History



Smithsonian
Libraries and Archives

Natural & Physical Science Libraries

► 14 locations:

- Washington, DC
- Suitland, MD
- Front Royal, VA
- Edgewater, MD
- Panama City, Panama

► Staff:

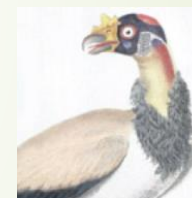
- 8 staff, 2 in Panama (pre-pandemic: 17 total)
- 4 NH volunteers (pre-pandemic)

► Collections:

- 600,000+ volumes (monographs & serials)

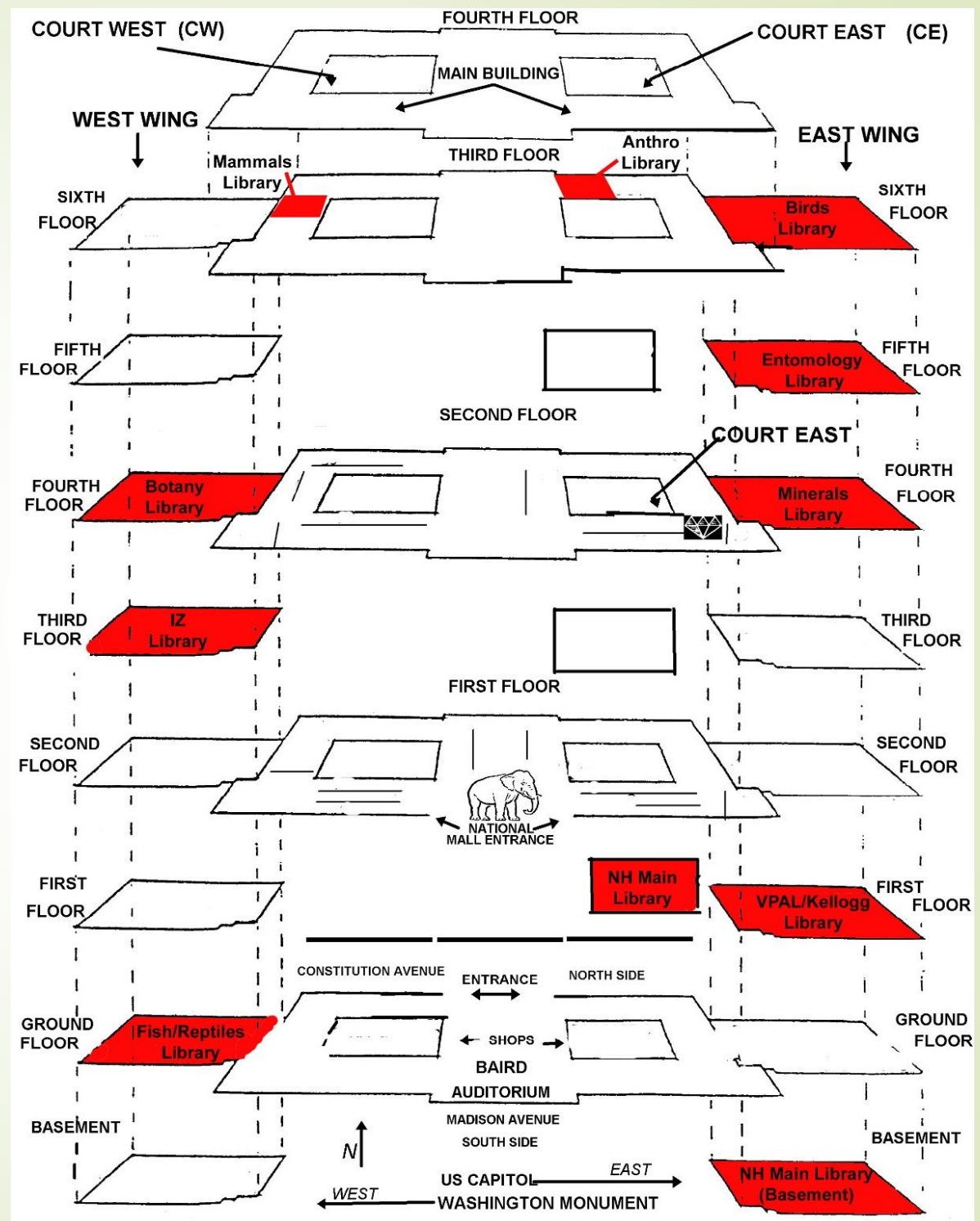
► Services:

Reference, Training, Outreach, Communications, Support for SLA initiatives (e.g. Adopt-a-book; data management; SRO, etc.)



Smithsonian
Libraries and Archives

Library Locations within the Building



Natural & Physical Science Libraries Statistics (2018)



**REFERENCE
QUESTIONS (SI-
INTERNAL):** 6,390



**REFERENCE (NON-
SI):** 2,264



VISITORS/TOURS:
2,811



**INTERLIBRARY
LOAN/DOCUMENT
DELIVERY:** 3,275
REQUESTS FROM
NPS PATRONS



SRO: 75% OF
SMITHSONIAN
RESEARCH ONLINE
CONTENT ADDED
BY NPS STAFF



BHL: 475,532
PAGE SCANS
ADDED TO BHL IN
FY 2017– OVERALL:
25,148 VOLUMES
FROM **8,890** TITLES,
CONTAINING
9,860,631 PAGES
FROM
SMITHSONIAN
LIBRARIES



Smithsonian
Libraries and Archives

Natural History and Museum Studies Research Libraries

East Court 1st Floor



Natural History Main
Collection (~105,000 vols.)

Museum Studies Research
Library (~30,000 vols.)

Coffee bar & newspapers

NH Basement Library



Folios and continued collection



NMNH East Wing Basement



Smithsoniana

Smithsoniana collection
(~7500 vols.)

Museum Studies Research Library

NMNH East Court 1st floor



MSRL collection
(~28,000 vols.)



Smithsonian
Libraries and Archives

Anthropology Library



Room 330
Main Building

John Wesley Powell
Anthropology Library
(~155,000 vols.)



Smithsonian
Libraries and Archives



Botany and Horticulture Library

Room 422
West Wing

Botany and Horticulture
Library (~98,000 vols.)



Smithsonian
Libraries and Archives



Mineral Sciences Library

Room 435B
East Wing

Mineral Sciences Library
(~13,500 vols.)



Smithsonian
Libraries and Archives

Entomology Library



Room 532
East Wing

Entomology Library
(~28,000 vols.)



Smithsonian
Libraries and Archives



Invertebrate Zoology Library

Room 346
West Wing



Invertebrate Zoology Library
(~17,000 vols.)



Smithsonian
Libraries and Archives

Birds Library



Room 609
East Wing

Vertebrate Zoology Libraries
- Birds, Mammals, Fish/Reptiles
(~56,000 total vols.)



Smithsonian
Libraries and Archives



Amphibians & Reptiles and Fishes Library

Room WG32- Ground Floor West Wing

Vertebrate Zoology Libraries
- Birds, Mammals, Fish/Reptiles
(~56,000 total vols.)



Smithsonian
Libraries and Archives

Mammals Library



Room 398 Main Building

Vertebrate Zoology Libraries
- Birds, Mammals, Fish/Reptiles
(~56,000 total vols.)



Smithsonian
Libraries and Archives

Vertebrate Paleontology Library

Kellogg Library of Marine Mammals



Room 101
East Wing

Remington Kellogg Library
of Marine Mammalogy
(~3,700 vols.)

Vertebrate Paleontology Library (~3,600 vols.)



Smithsonian
Libraries and Archives

National Zoological Park Library

Rock Creek Park, DC



Smithsonian Conservation Biology Institute Library

Front Royal, VA



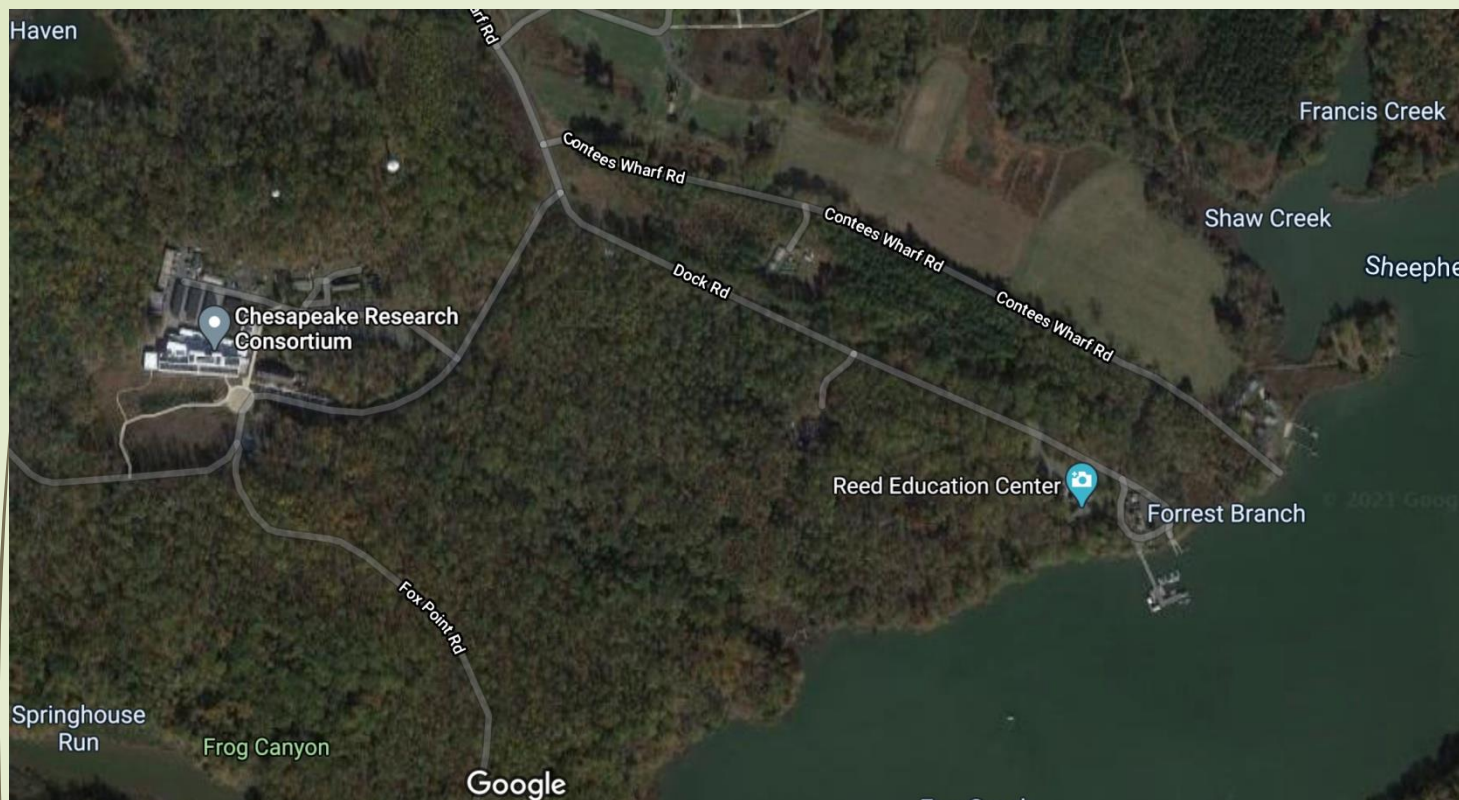
Smithsonian
Libraries and Archives

Museum Support Center Library



Suitland, MD

Museum Support Center
(~25,000 volumes)



SERC Library

Smithsonian Environmental Research Center

Mathias Lab
Edgewater, MD



Smithsonian
Libraries and Archives

SERC Library

Smithsonian Environmental Research Center



Smithsonian
Libraries and Archives



STRI Library

Smithsonian Tropical Research Institution



Panamá, República de
Panamá

Adopt-A-Book



A fundraising initiative offered by the Smithsonian Libraries and Archives
<https://library.si.edu/donate/adopt-a-book>



Research Guides (Available outside of SI)

- Science Resources

<https://library.si.edu/research/find-science-resources>

- Includes:

- databases
- Science subject area research guides
- Research resources like data management, grant research, etc

Natural & Physical Science Libraries

Need to contact the library?

NMNHLibrary@si.edu

More Info:

- **Library Research Center Info**

- <https://library.si.edu/libraries>

- **About the Libraries**

- <https://library.si.edu/about-us>

- **Smithsonian Libraries History**

- <https://library.si.edu/about/history>

- I also used some Wikipedia pages for information.



Smithsonian
Libraries and Archives