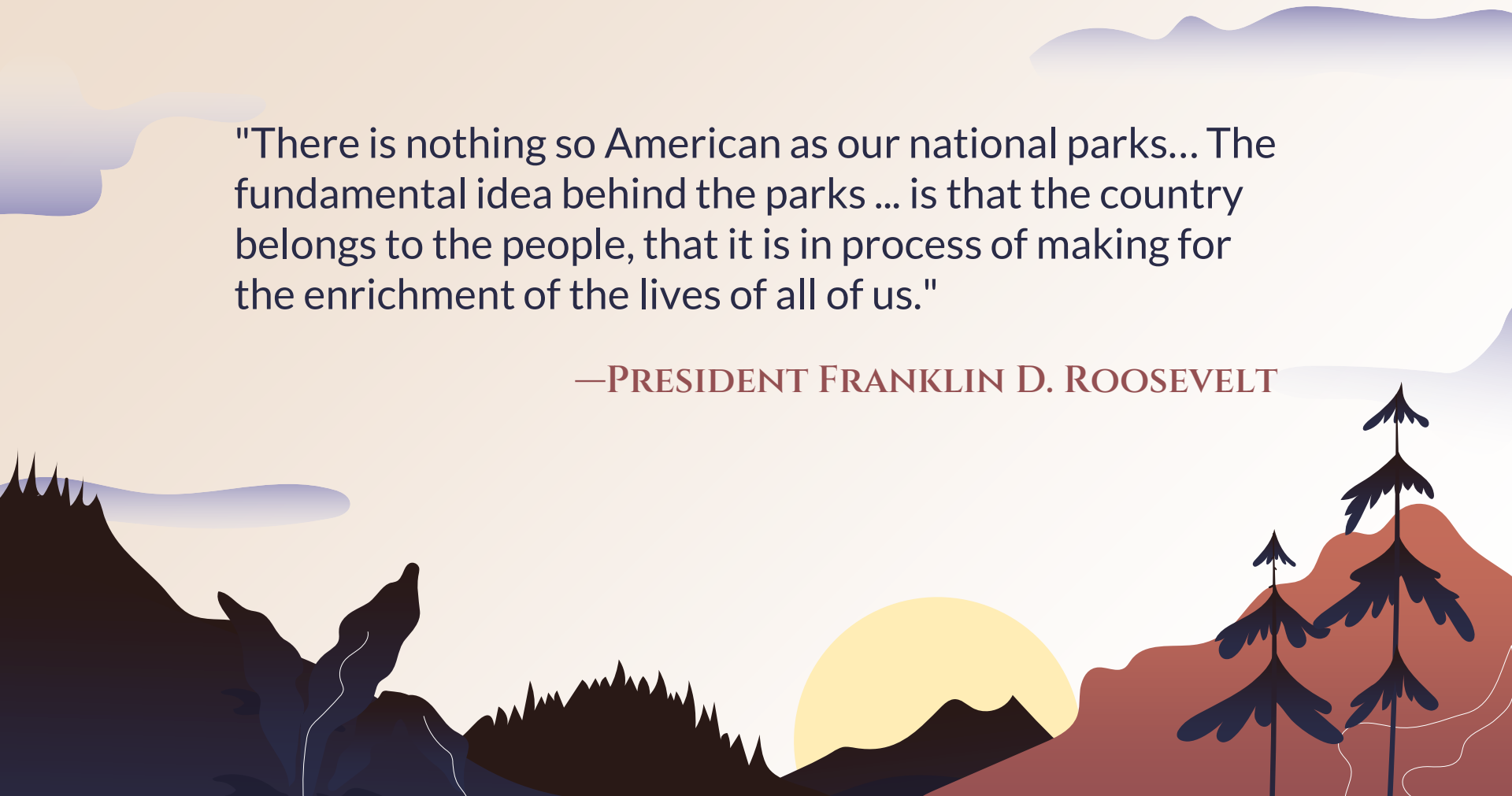
A stylized landscape illustration featuring a blue mountain range on the left with three dark evergreen trees. In the center, a yellow sun is partially obscured by a dark silhouette of a forest. To the right, there are reddish-brown mountains with white outlines. The sky is a light beige color with soft, wavy clouds in shades of light blue and purple.

# THERE IS NOTHING SO AMERICAN: PLANNING A NATIONAL PARK VACATION

Jennifer Castle, Tennessee State University  
Dominique Hallett, Arkansas State University

"There is nothing so American as our national parks... The fundamental idea behind the parks ... is that the country belongs to the people, that it is in process of making for the enrichment of the lives of all of us."

—PRESIDENT FRANKLIN D. ROOSEVELT



The background features a stylized landscape. On the left, there are reddish-brown mountains with dark green pine trees at their base. On the right, there are dark blue hills. A large yellow sun is partially visible behind the hills. The sky is a light beige color with soft, stylized clouds in shades of blue and purple.

# 424

Sites administered by the U.S. National Park Service

# 850,000,000

Acres in all 50 states, D.C., and territories

# 312,000,000

Recreation visits were logged by the NPS in 2022

The background is a stylized landscape. At the top, there are soft, purple and blue clouds. In the center, a large yellow circle contains the number '63'. Below this, the words 'NATIONAL PARKS' are written in a large, dark red, serif font. Underneath that, the phrase 'in 30 states' is written in a smaller, black, sans-serif font. The bottom of the image features dark blue and black silhouettes of jagged mountains on the left and right, with three dark blue evergreen trees on the right side.

63

# NATIONAL PARKS

in 30 states

# MOST VISITED PARKS

01

GREAT SMOKY MOUNTAINS  
(NC, TN)

12.94 million

02

GRAND CANYON (AZ)

4.73 million

03

ZION (UT)

4.69 million

04

ROCKY MOUNTAIN (CO)

4.30 million

05

ACADIA (ME)

3.97 million

# MOST VISITED PARKS

06

YOSEMITE (CA)

3.67 million

07

YELLOWSTONE (WY, MT,  
ID)

3.29 million

08

JOSHUA TREE (CA)

3.06 million

09

CUYAHOGA VALLEY (OH)

2.913 million

10

GLACIER (MT)

2.908 million

# LEAST VISITED PARKS

01

GREAT BASIN (NV)

142,115

02

DRY TORTUGAS (FL)

78,488

03

WRANGELL-ST. ELIAS (AK)

65,236

04

KATMAI (AK)

33,908

05

NORTH CASCADES (WA)

30,154

# LEAST VISITED PARKS

06

ISLE ROYALE (MI)

25,454

07

LAKE CLARK (AK)

18,187

08

KOBUK VALLEY (AK)

16,925

09

GATES OF THE ARTIC (AK)

9,457

10

AMERICAN SAMOA (AS)

1,887



The background is a stylized landscape illustration. In the upper left, a large, solid yellow circle represents the sun. The sky is a light beige color with several horizontal, wavy bands of light blue and purple, suggesting clouds or mist. The foreground features dark, jagged silhouettes of evergreen trees on the left and right. In the center and right foreground, there are large, rounded, reddish-brown shapes representing mountains or hills, with some darker, wavy lines indicating shadows or textures. The overall style is minimalist and graphic.

# NPS TRIVIA

WHAT IS THE ONLY STATE WITHOUT A NATIONAL  
PARK OF ITS OWN?



RHODE ISLAND



DELAWARE



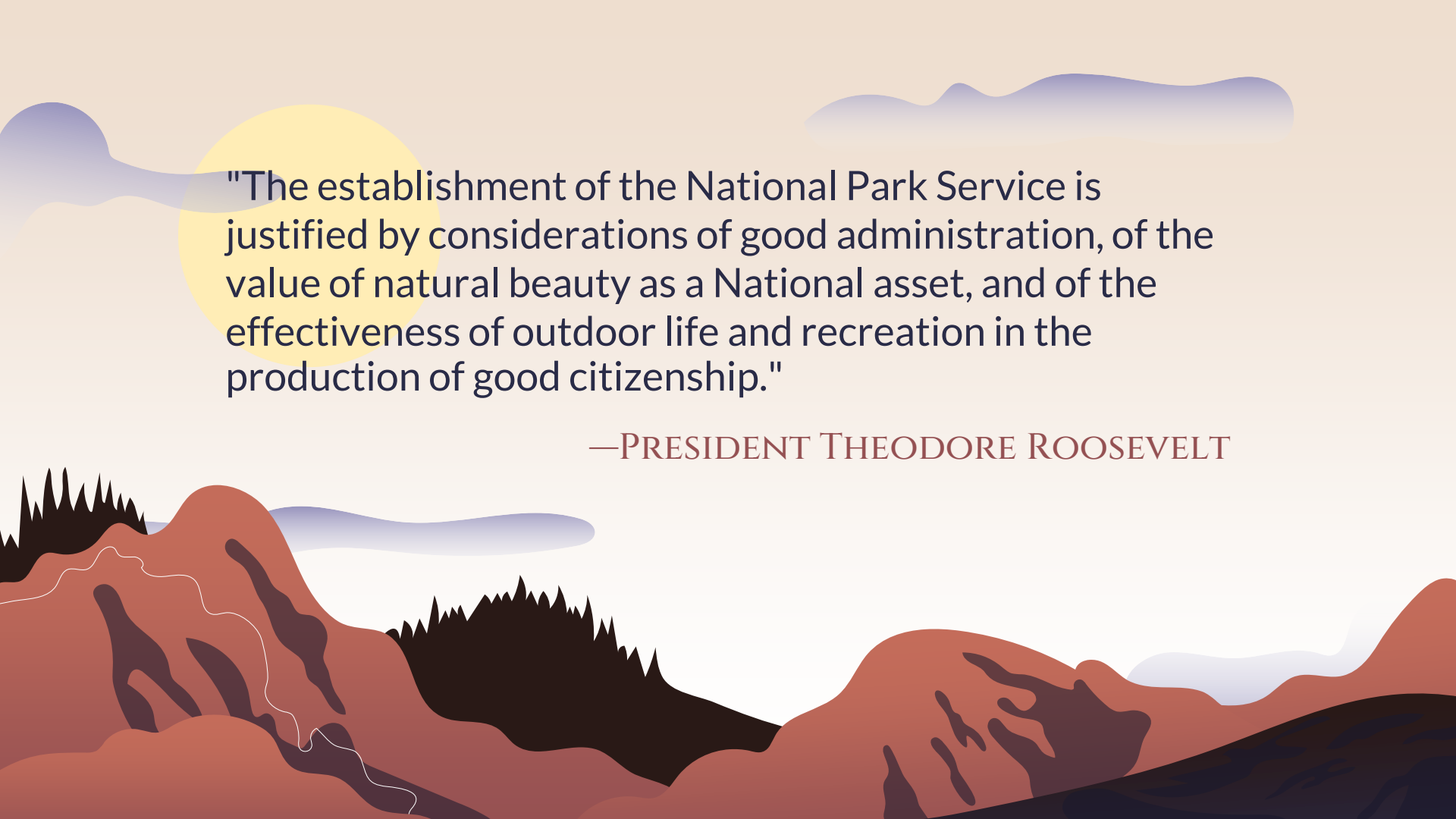
CONNECTICUT





DELAWARE



A stylized landscape illustration featuring a large yellow sun in the upper left, purple mountains in the background, and red, rocky terrain with black silhouettes of trees in the foreground.

"The establishment of the National Park Service is justified by considerations of good administration, of the value of natural beauty as a National asset, and of the effectiveness of outdoor life and recreation in the production of good citizenship."

—PRESIDENT THEODORE ROOSEVELT

# NIGHT SKY WATCHING

<https://www.nps.gov/subjects/nightskies/index.htm>

The night sky has inspired us for generations. Nighttime views and environments are among the critical park features the NPS protects.



# NIGHT SKY WATCHING

<https://www.nps.gov/subjects/nightskies/stargaze.htm>

Many national parks offer night sky programs, from telescope astronomy events to full moon walks with rangers.

ARCHES NATIONAL PARK, UT	<a href="https://www.nps.gov/arch/learn/nature/lightscape.htm">https://www.nps.gov/arch/learn/nature/lightscape.htm</a>
BIG CYPRESS NATIONAL PRESERVE, FL	<a href="https://www.nps.gov/bicy/planyourvisit/astronomy-programs.htm">https://www.nps.gov/bicy/planyourvisit/astronomy-programs.htm</a>
CHACO CULTURE NATIONAL HISTORICAL PARK, NM	<a href="https://www.nps.gov/chcu/planyourvisit/nightsky.htm">https://www.nps.gov/chcu/planyourvisit/nightsky.htm</a>
DEATH VALLEY NATIONAL PARK, CA, NV	<a href="https://www.nps.gov/deva/learn/nature/lightscape.htm">https://www.nps.gov/deva/learn/nature/lightscape.htm</a>
GREAT BASIN NATIONAL PARK, NV	<a href="https://www.nps.gov/grba/getinvolved/supportyourpark/gbo.htm">https://www.nps.gov/grba/getinvolved/supportyourpark/gbo.htm</a>

# OCEAN AND COASTAL PARKS

<https://www.nps.gov/subjects/oceans/ocean-and-coastal-parks.htm>

In addition to traditional activities such as wildlife viewing, hiking, and educational opportunities -- both natural and cultural -- these unique parks can include

- Boating
- Watersports
- Paddlesports
- Diving and snorkeling
- Fishing

# SHORT HIKING

<https://www.nps.gov/subjects/trails/index.htm>

01

## QUEEN'S GARDEN NAVAJO LOOP TRAIL

BRYCE CANYON, UT

Distance: 2.75 miles | Difficulty:  
Easy to moderate | Time: 2 to 3  
hours

02

## INSPIRATION POINT GRAND TETON, WY

Distance: 2 miles | Difficulty: Easy  
to moderate | Time: 1 to 2 hours

03

## UTE TRAIL TO TOMBSTONE RIDGE ROCKY MOUNTAIN, CO

Distance: 4 miles | Difficulty: Easy |  
Time: 2 to 3 hours

04

## BLUE FOREST TRAIL PETRIFIED FOREST, AZ

Distance: 3 miles | Difficulty: Easy  
to moderate | Time: 1 to 2 hours

05

## HIDDEN LAKE OVERLOOK GLACIER, MT

Distance: 2.8 miles | Difficulty:  
Easy | Time: 1 to 2 hours



# LONG HIKING

<https://www.nps.gov/subjects/trails/index.htm>

01

## APPALACHIAN TRAIL

SHENANDOAH, VA

Distance: 105 miles | Duration: 7 days

02

## WONDERLAND TRAIL

MOUNT RAINIER, WA

Distance: 93 miles | Duration: 10-14 days

03

## JOHN MUIR TRAIL YOSEMITE, SEQUOIA, & KINGS CANYON, CA

Distance: 211 miles | Duration: 3 weeks

04

## GRAND CANYON RIM-TO-RIM

GRAND CANYON, AZ

Distance: 24 miles | Duration: 4 days

05

## PAINTED DESERT PETRIFIED FOREST, AZ

Distance: At least 2 miles | Duration: 2-5 days

# BIKING

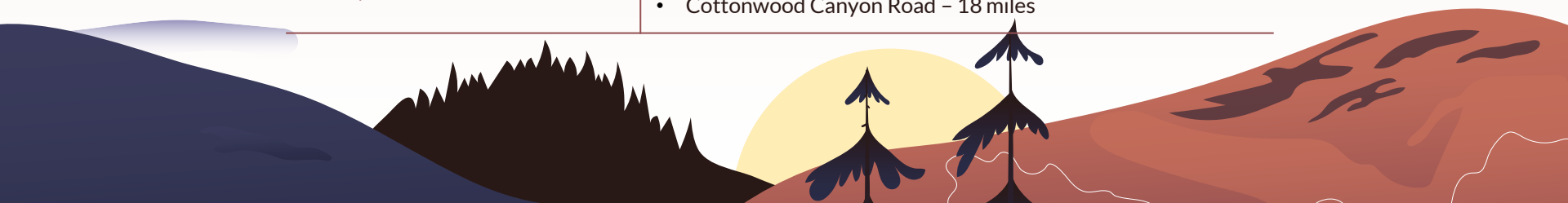
<https://www.nps.gov/subjects/biking/visit.htm>

SHARK VALLEY SCENIC LOOP EVERGLADES, FL	15 miles
GLACIER NATIONAL PARK,	50 miles
HERMIT ROAD GRAND CANYON, AZ	7 miles
CADES COVE, GREAT SMOKY MOUNTAINS, TN	11 miles
CACTUS FOREST LOOP SAGUARO, AZ	8 miles
HURRICANE RIDGE OLYMPIC, WA	17 miles (ascent)

# MOUNTAIN BIKING

<https://www.nps.gov/subjects/biking/visit.htm>

BADLANDS NATIONAL PARK, SD	<ul style="list-style-type: none"><li>• Northeast Loop – 17 miles</li><li>• Sage Creek Loop – 23 miles</li><li>• Northeast-Big Foot Loop – 27 miles</li></ul>
BIG BEND NATIONAL PARK, TX	<ul style="list-style-type: none"><li>• Old Ore Road – 26 miles</li><li>• Old Maverick Road – 13 miles</li><li>• Grapevine Hills Road – 15 miles</li><li>• Paint Gap Road – 15 miles</li></ul>
CANYONLANDS NATIONAL PARK, UT	White Rim Trail – 100 miles
CUYAHOGA VALLEY NATIONAL PARK, OH	Almost 100 miles of trails
DEATH VALLEY NATIONAL PARK, CA	<ul style="list-style-type: none"><li>• Salt Creek Road – 1.2 miles</li><li>• Skidoo Road – 7 miles</li><li>• Cottonwood Canyon Road – 18 miles</li></ul>



# E-BIKES

<https://www.nps.gov/subjects/biking/e-bikes.htm>

- E-bikes make bicycle travel easier and more efficient, because they allow bicyclists to travel farther with less effort.
- E-bikes provide expanded options for visitors who wish to ride a bicycle but may be limited because of physical fitness, age, disability, or convenience.
- When used as an alternative to gasoline- or diesel-powered modes of transportation, e-bikes can reduce greenhouse gas emissions and fossil fuel consumption, improve air quality, and support active modes of transportation for park staff and visitors.
- Similar to traditional bicycles, e-bikes can decrease traffic congestion, reduce demand for vehicle parking spaces, and increase the number and visibility of cyclists on the road.



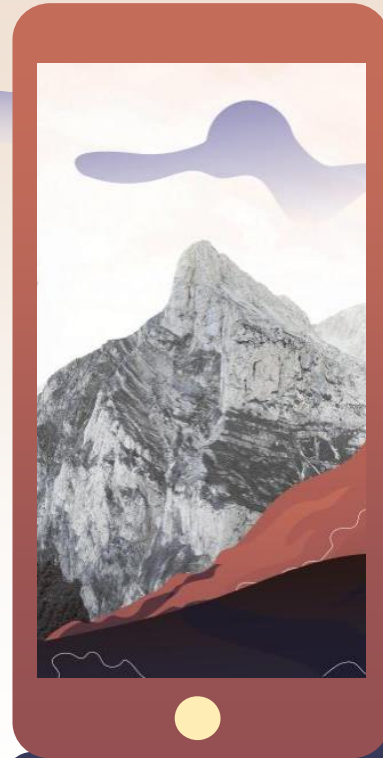
# PLAN YOUR NATIONAL PARK VISIT

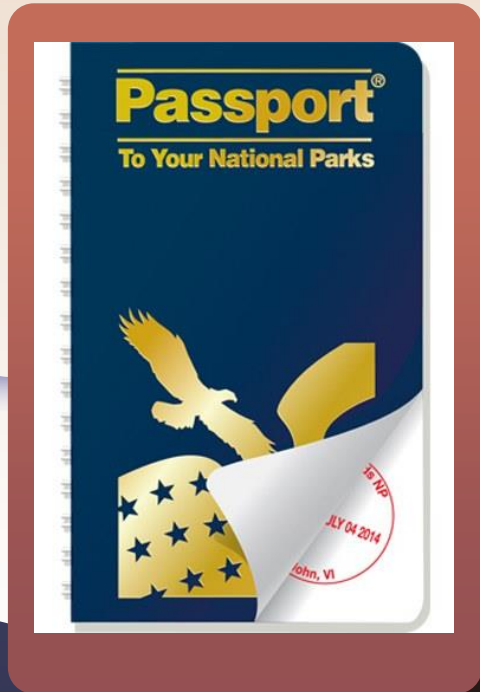
<https://www.nps.gov/planyourvisit/>



# NPS APP

<https://www.nps.gov/subjects/digital/nps-apps.htm>





# NPS PASSPORT

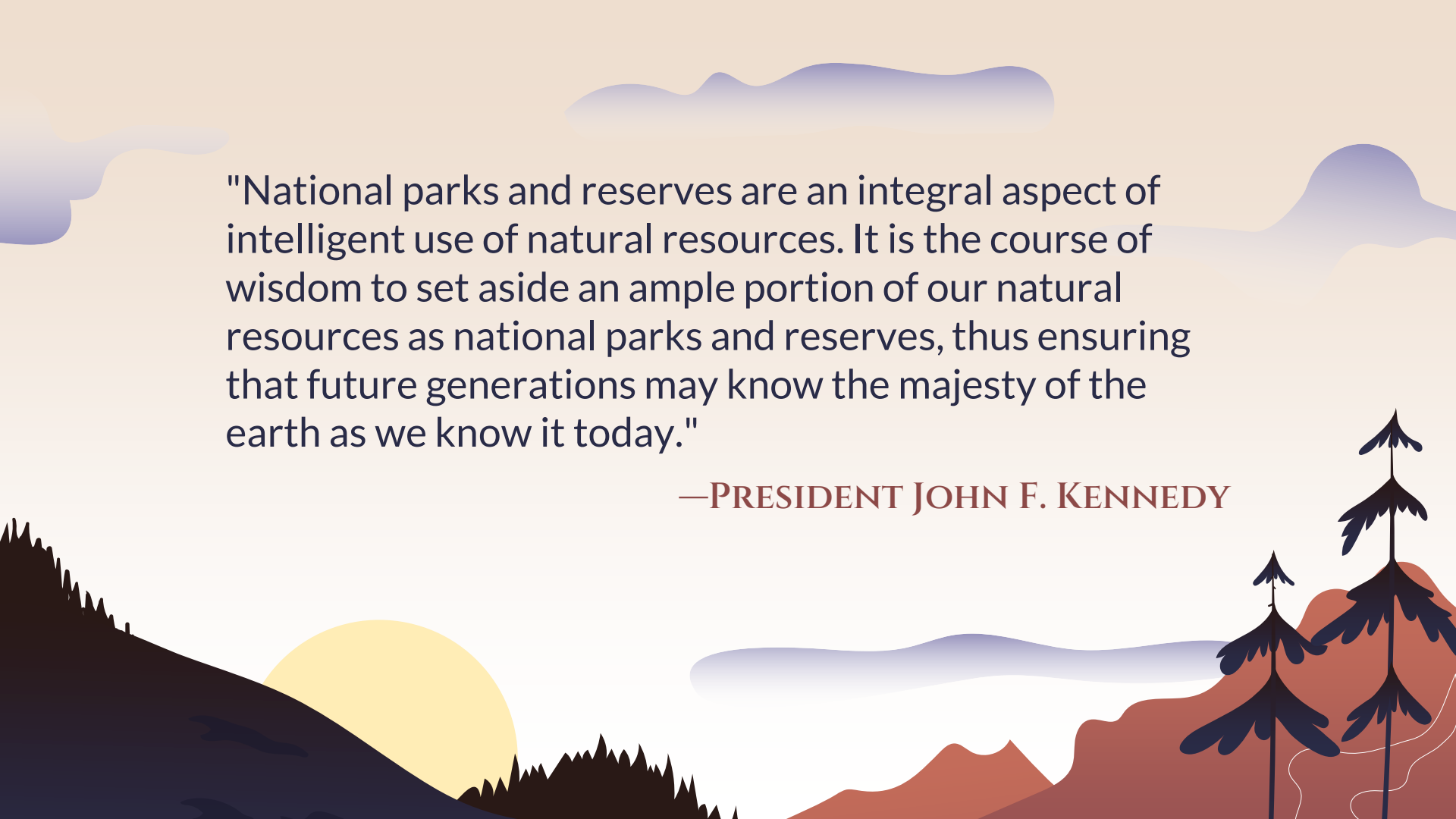
<https://americasnationalparks.org/>

# JUNIOR RANGERS

<https://www.nps.gov/kids/become-a-junior-ranger.htm>





A stylized landscape illustration featuring a large yellow sun partially obscured by dark, jagged mountain silhouettes on the left. In the foreground, there are rolling hills in shades of red and orange, with several dark blue evergreen trees on the right. The background consists of soft, wavy clouds in light purple and blue against a pale orange sky.

"National parks and reserves are an integral aspect of intelligent use of natural resources. It is the course of wisdom to set aside an ample portion of our natural resources as national parks and reserves, thus ensuring that future generations may know the majesty of the earth as we know it today."

—PRESIDENT JOHN F. KENNEDY

# THANK YOU

Questions? Comments?

[dhallett@astate.edu](mailto:dhallett@astate.edu)  
[jcastle@tnstate.edu](mailto:jcastle@tnstate.edu)



# SOURCES

[https://irma.nps.gov/Stats/SSRSReports/National%20Reports/Annual%20Park%20Ranking%20Report%20\(1979%20-%20Last%20Calendar%20Year\)](https://irma.nps.gov/Stats/SSRSReports/National%20Reports/Annual%20Park%20Ranking%20Report%20(1979%20-%20Last%20Calendar%20Year))

<https://www.usatoday.com/story/travel/experience/america/national-parks/2023/02/27/national-parks-least-visited-america/11305137002/>

<https://www.darksky.org/>

<https://www.earthtrekkers.com/best-day-hikes-in-the-national-parks/>

<https://www.travel-experience-live.com/best-backpacking-multi-day-hikes-national-parks/>

<https://www.npca.org/articles/1579-staff-picks-11-spectacular-roads-for-riding-your-bike>

<https://www.travel-experience-live.com/best-national-parks-for-mountain-biking-usa/>

