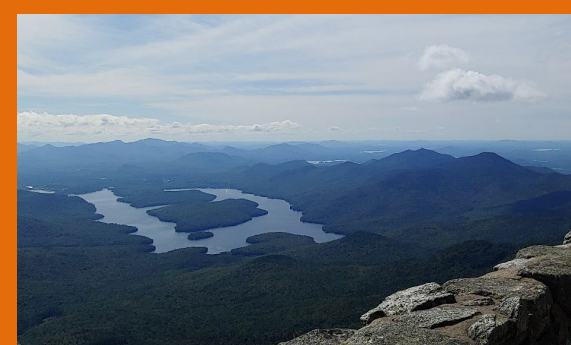


Discovery of Indigenous Publication Records by Using USGS Geology Research Tools GPO FDLP Webinars | 30 October 2024



Emily C. Wild

Chemistry, Geosciences and Environmental Studies Librarian

Quick Bio



Emily C. Wild

ewild@princeton.edu

<https://library.princeton.edu/staff/ewild>

Princeton University Library, 2018-Present

Chemistry, Geosciences and Environmental Studies Librarian

<https://libguides.princeton.edu/prf.php?id=5c6fcc24-7cdb-11ed-9922-0ad758b798c3>

ORCID: <https://orcid.org/0000-0001-6157-7629>

Zenodo , example <https://zenodo.org/records/11541263>

United States Geological Survey (USGS) employee 1995/1996 to 2018:

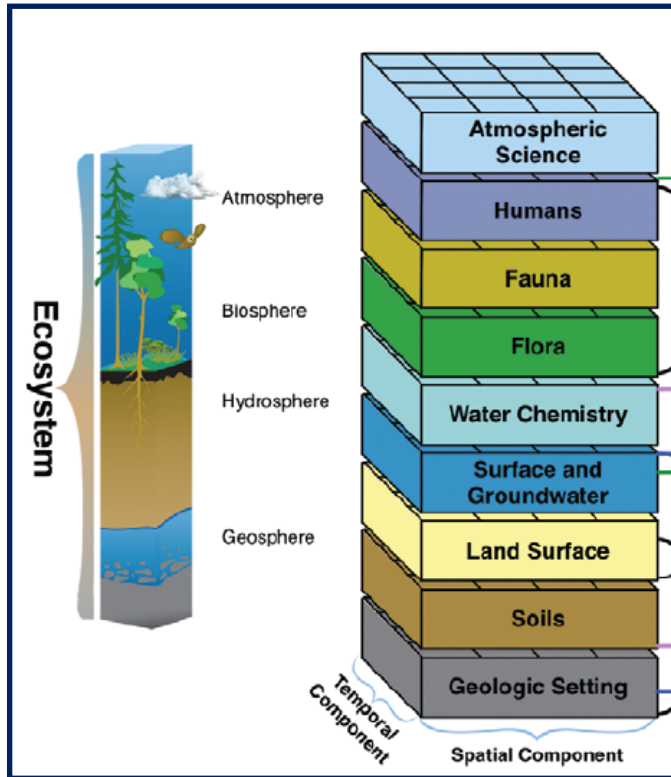
<https://web.archive.org/web/20170716130801/https://www.usgs.gov/staff-profiles/emily-wild>

**Denver, Colorado : 2008-2018 - Librarian (Physical Scientist) for
Water, Geology, Geography, Biology**

<https://libguides.princeton.edu/geo/librarianwebinars>

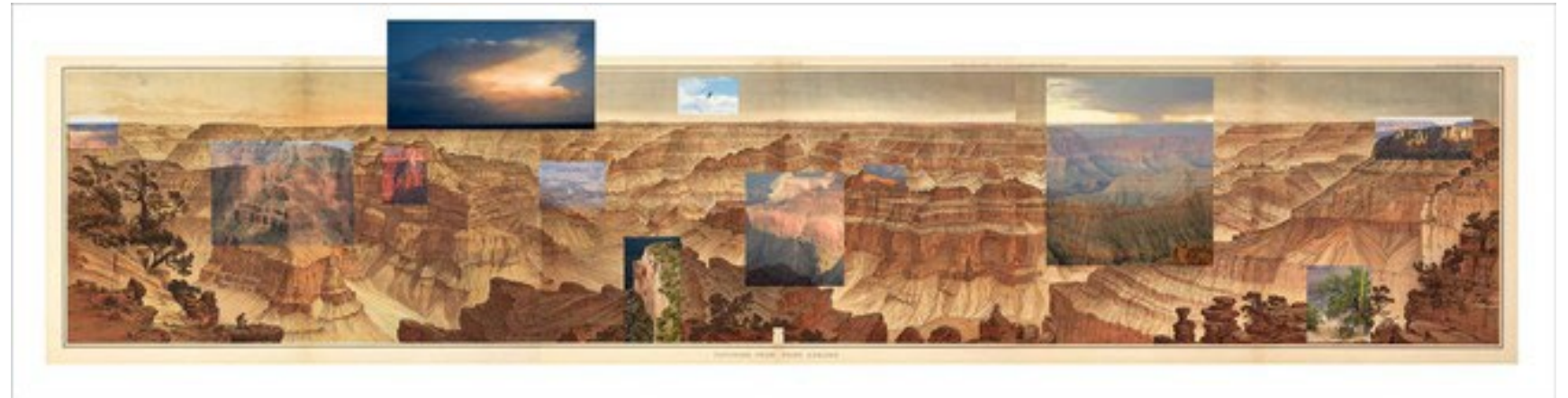
**NH-VT & MA-RI: 1996-2008 - Hydrologist: Water Use, Surface Water,
Groundwater, Water Quality, Coastal Waters, Hydrogeology,
Bibliographic Databases**

Overview



- Background in New York - slides
- Research in Rhode Island , and other New England areas – live demo
- Research in the Western States , Colorado and other areas – live demo

https://libguides.princeton.edu/Geology_Library_Tools



<https://store.usgs.gov/product/114454> <https://artmuseum.princeton.edu/collections/objects/135679>

How the Iroquois Great Law of Peace Shaped U.S. Democracy

<https://www.pbs.org/native-america/blogs/native-voices/how-the-iroquois-great-law-of-peace-shaped-us-democracy/>



<https://www.6nicc.com/>



<https://www.911memorial.org/visit/museum/exhibitions/past-exhibitions/skywalkers-portrait-mohawk-ironworkers-world-trade-center>



“The *seventh generation principle* is based on an ancient philosophy of the Haudenosaunee Confederacy (Iroquois), which is recognized as the oldest democracy in the world and believed to be the model of the American Constitution, the foundation document of the most powerful and prosperous nation on earth.”



Haudenosaunee Thanksgiving Address Greetings to the Natural World

“The Waters

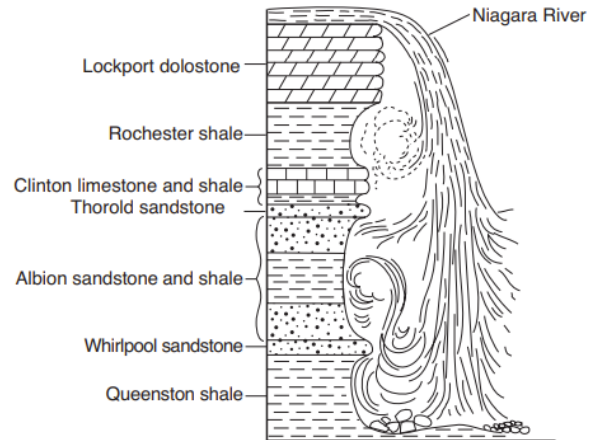
We give thanks to all the waters of the world for quenching our thirst and providing us with strength. Water is life. We know its power in many forms- waterfalls and rain, mists and streams, rivers and oceans. With one mind, we send greetings and thanks to the spirit of Water.

Now our minds are one.”

New York State Earth Science

Regents exams <https://www.nysedregents.org/>
 Earth Science <https://www.nysedregents.org/EarthScience/>

34 A cross section of Niagara Falls is shown below.

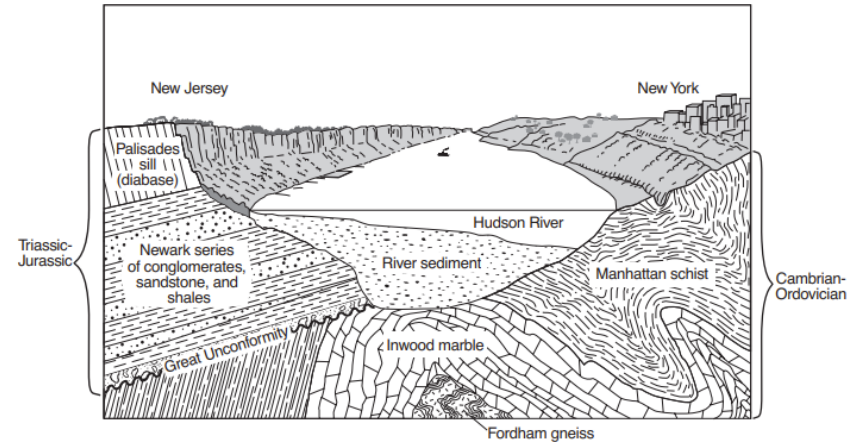


Which two rock units appear to be most resistant to weathering and erosion?

- (1) Lockport dolostone and Whirlpool sandstone
- (2) Rochester shale and Albion sandstone and shale
- (3) Clinton limestone and shale and Queenston shale
- (4) Thorold sandstone and Queenston shale



Base your answers to questions 76 through 78 on the cross section below showing the underlying bedrock of New York and New Jersey along the Hudson River.



76 Identify the oldest bedrock shown in the diagram. [1]

77 Describe *one* piece of evidence shown in the cross section that indicates that the Inwood marble was formed by regional metamorphism. [1]

78 Identify *two* processes that led directly to the development of the Great Unconformity beneath the Newark series. [1]



USGS AASG Association of American State Geologists
 science for a changing world

USGS HOME CONTACT USGS SEARCH

Home Catalog Lexicon MapView New Mapping Standards Com

National Geologic Map Database

Geolex — Unit Summary

Geologic Unit: Manhattan

Usage:
 Manhattan Schist (CT*,NJ*,NY*)
 Manhattan Formation of New York City Group (CT,NY)

Geologic age:
 Cambrian, Early*
 Ordovician

Type section, locality, area and/or origin of name:
 Named from exposures on Manhattan Island, NY (Merrill, 1890).

AAPG geologic province:
 New England province*

For more information, please contact Nancy Stamm, Geologic Names Committee Secretary.
 Asterisk (*) indicates published by U.S. Geological Survey authors.
 *No current usage" (t) implies that a name has been abandoned or has fallen into disuse. Former usage and, if known, replacement name given in parentheses
 Slash (/) indicates name does not conform with nomenclatural guidelines (CSN, 1933; ACSN, 1961, 1970; NACSN, 1983, 2005). This may be explained within brackets.

ACCESSIBILITY FOIA PRIVACY POLICIES AND NOTICES

U.S. Department of the Interior | U.S. Geological Survey
 Supported by the National Cooperative Geologic Mapping Program
 Page Contact Information: Personnel
 Page Last Modified: Thu 02 Dec 2021 04:50:28 PM MST

https://ngmdb.usgs.gov/Geolex/Units/Manhattan_2616.html



Manhattan :

**In Lenape language means
" island of many hills ".**

Summary Report
Manhattan

Feature Details

Feature ID	2432105	
Name	Manhattan	
Class	Island	
Feature Code	Island	
Location	New York County - New York	
Citation	Source Type	Text
	Reference	NY
	Originator	
	Distribution Date	
	Title	
	Edition	
	Original Citation	Lederer, Richard M., Junior. The Place-Names of Westchester County, New York. Harrison, New York: Harbor Hill Books, 1978.
Entry Date	May 7, 2008	
*Elevation	26 meters / 85 feet	
Designations		
History	In Lenape language means " island of many hills ".	

<https://edits.nationalmap.gov/apps/gaz-domestic/public/search/names/2432105>



“In summer 1701, Montréal was the scene of a major historical event: the signature of the Great Peace treaty. This treaty put an end to several decades of conflict between the Iroquois, allies of the English, and the French and their allied Indigenous People. As such, it marks the turning point in Franco-Amerindian relations featuring [Louis Hector de Callière](#) and [Kondiaronk](#), the Huron-Wendat Grand Chief.”

<https://pacmusee.qc.ca/en/stories-of-montreal/article/the-great-peace-of-montreal/>

A Quebec memorial to 1603’s French-Indigenous alliance seeks to put nation-to-nation conversations back in the story of Canada”

“Nationalist myths have long placed the birth of New France at Champlain’s flag-planting on the future site of Quebec City. But earlier and farther east, the newcomers and First Nations met as equals – and those nations want modern Canadians to know why”

<https://www.theglobeandmail.com/canada/article-a-quebec-memorial-to-1603s-french-indigenous-alliance-seeks-to-put/>

1671, (24 août) Québec.¹

I. — BARBOT et BARBEAU, FRANCOIS; b en 1650; fils de Jacques et de Jeanne Cornuel, de Ste. Radegonde, évêché de Poitiers; s 16 juin 1711, à Charlesbourg.²

HÉDOUIN, Marguerite; b en 1658; fille de François et de Catherine Le Roy, de Soissons (Picardie).

Anne, b¹ 8 et s¹ 28 mars 1673. — *Marguerite*, b¹ 4 septembre 1674. — *Simon*, b 15 avril 1692, à Lorette²; m³ 14 octobre 1715, à Cathe-

(1) Tué par les Anglais au combat de Laprairie avec Pierre Cabassier.

(2) Tué par les Iroquois avec Le Moyne de Bienville.

(3) Voir registres de Québec, 1650.

(4) Voy. Barbot.

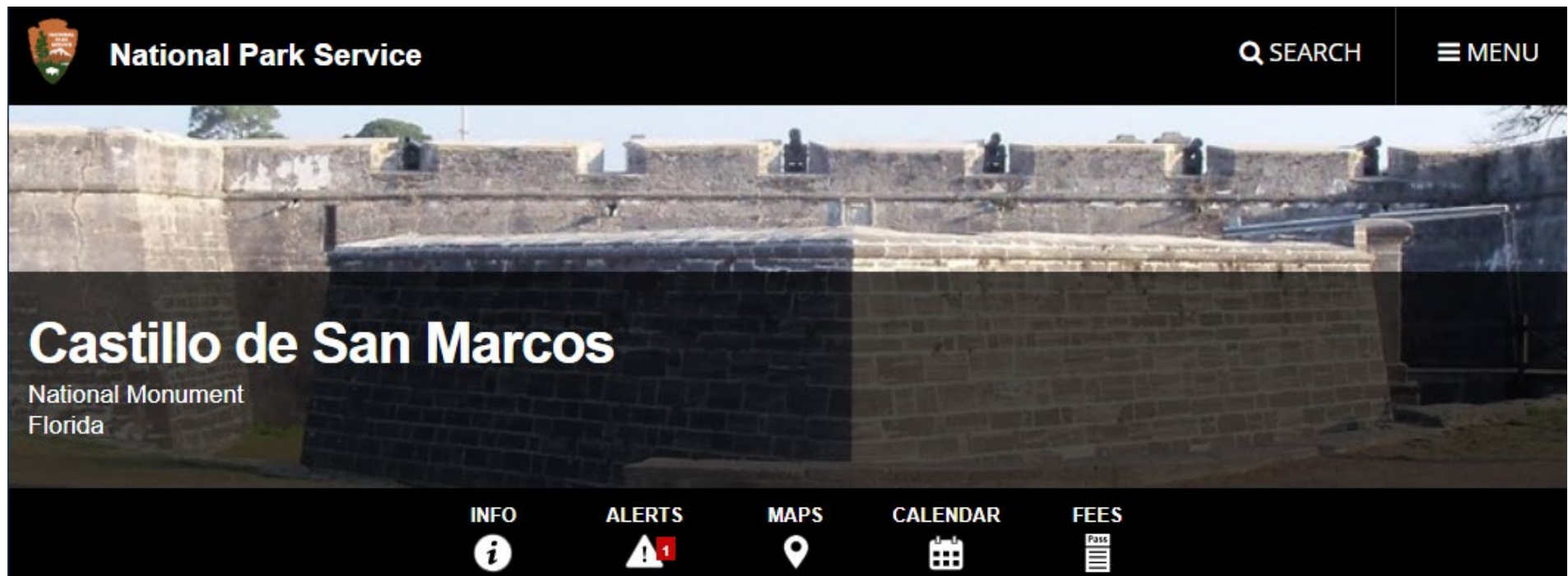
**Tué par les Iroquois avec
Le Moyne de Bienville.**

**Killed by the Iroquois with
Le Moyne de Bienville.**

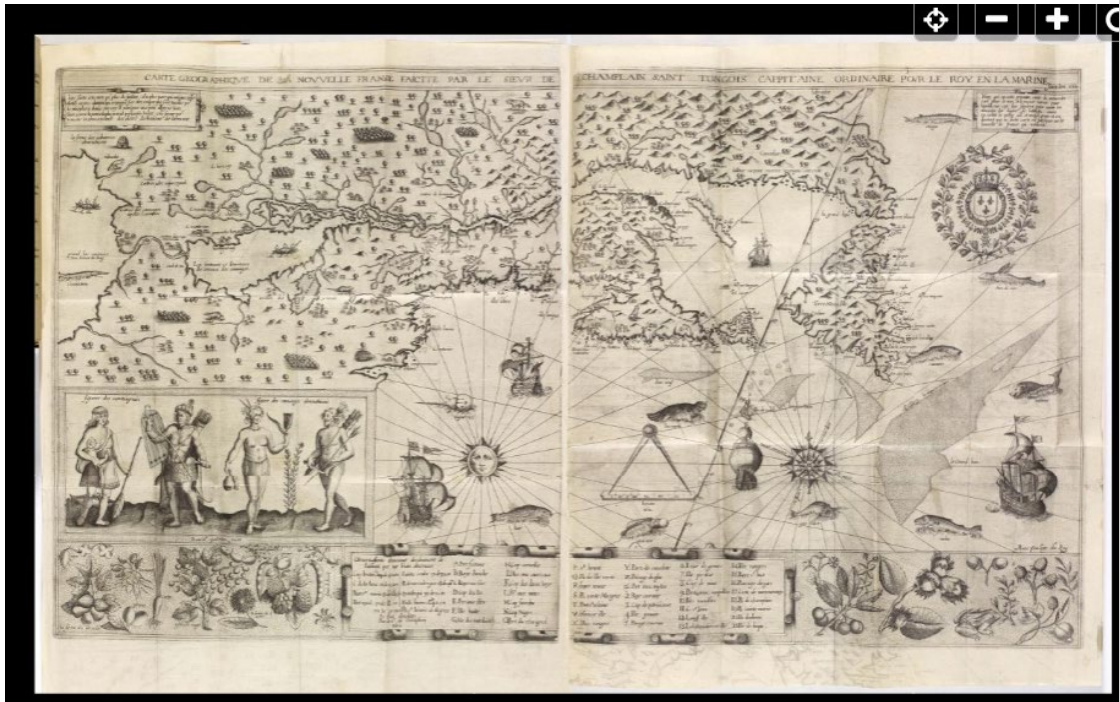
<https://www.nps.gov/casa/learn/historyculture/the-first-thanksgiving.htm>

The First Thanksgiving

On September 8, 1565, Pedro Menéndez de Avilés and 800 Spanish settlers founded the city of St. Augustine in Spanish La Florida. As soon as they were ashore, the landing party celebrated a Mass of Thanksgiving.



<https://www.loc.gov/item/2021668652/>



The French, Italian, Spanish called indigenous peoples “Wild”

Ex. Almouchicois, New France, 1612 <https://www.loc.gov/item/2021668652/>

Live Searches

<https://pubs.usgs.gov/>

<https://www.sciencebase.gov/catalog/>

https://ngmdb.usgs.gov/ngmdb/ngmdb_home.html

<https://www.usgs.gov/tools/geographic-names-information-system-gnis>